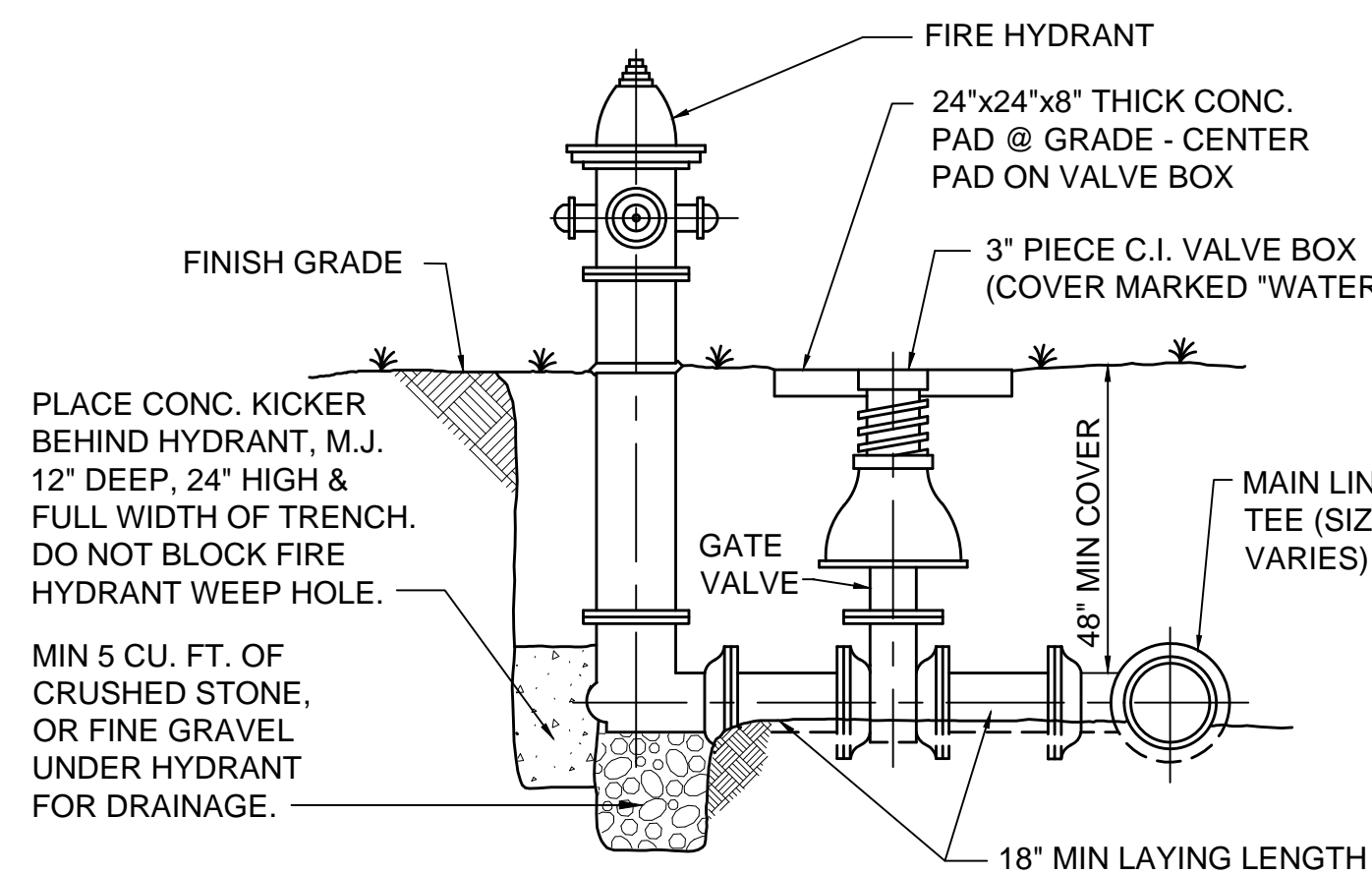


## DETAIL TYPICAL WATER VALVE SETTING

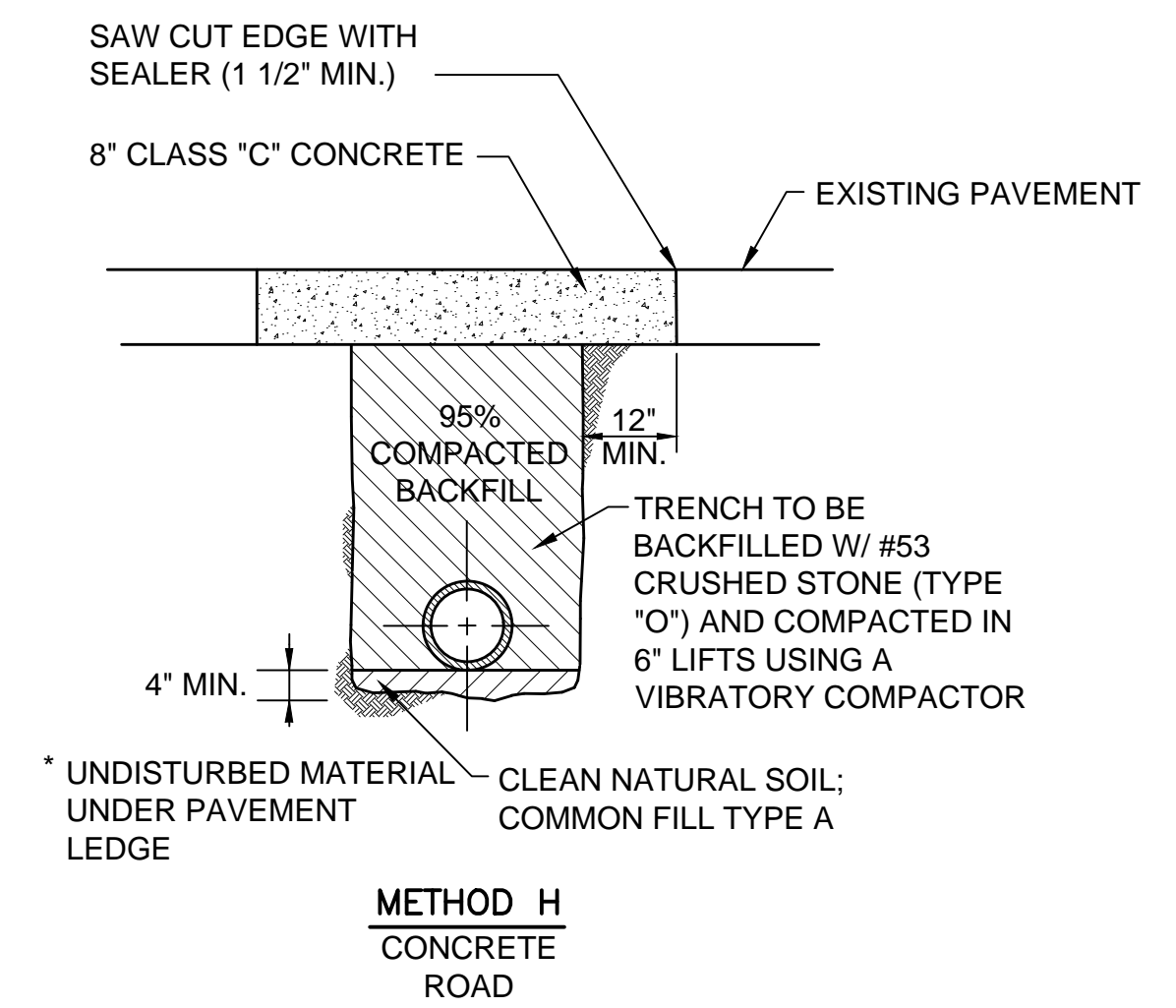
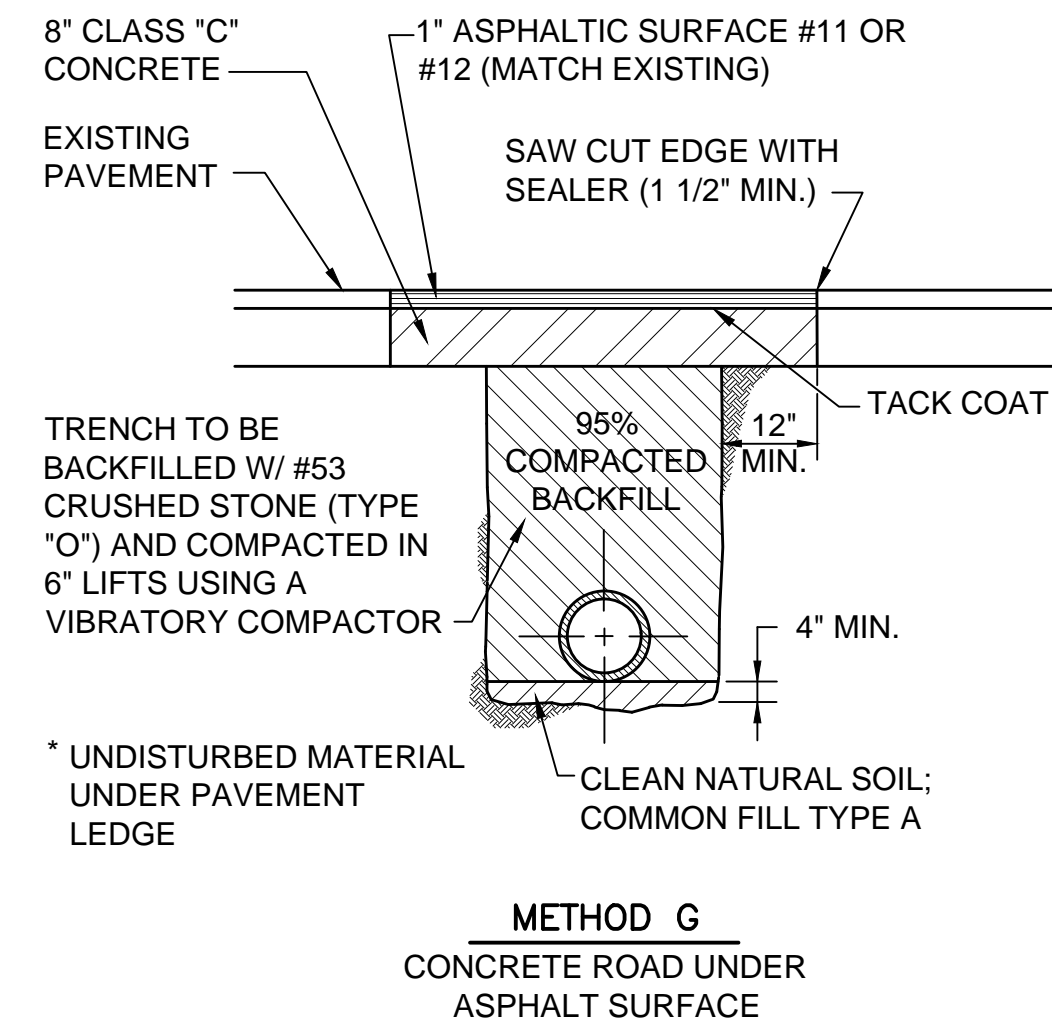
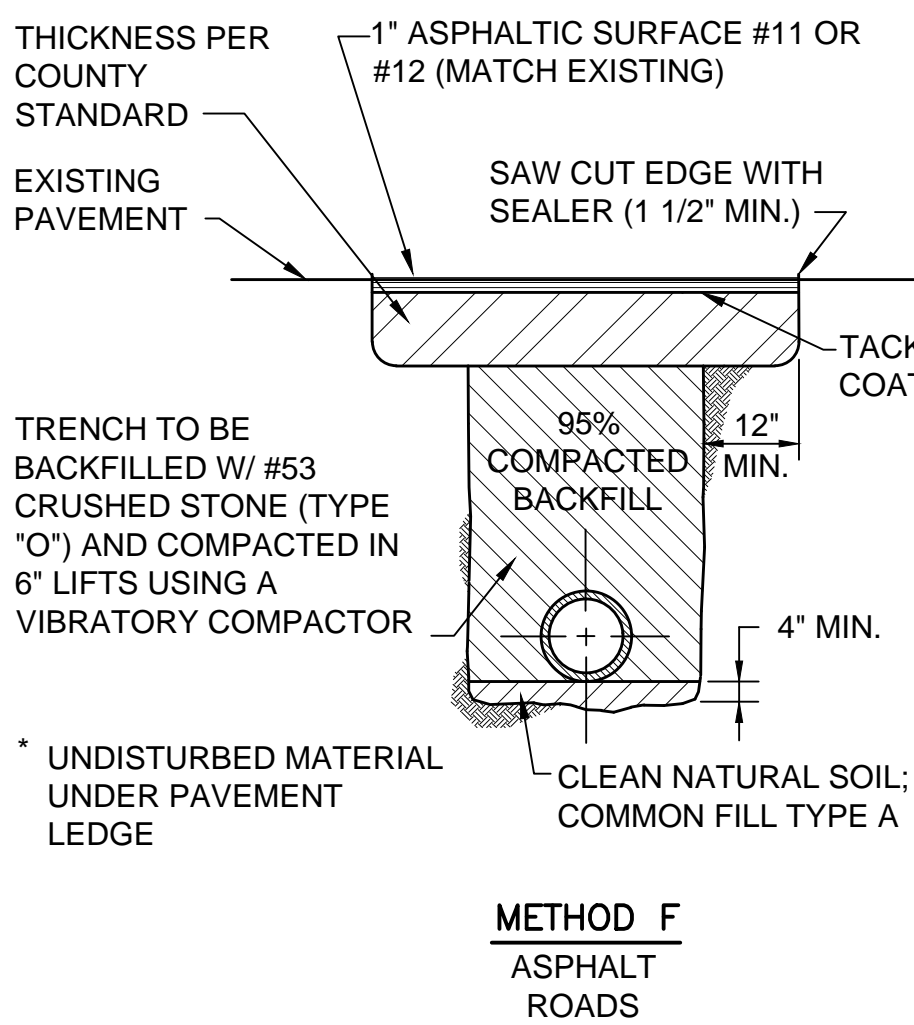
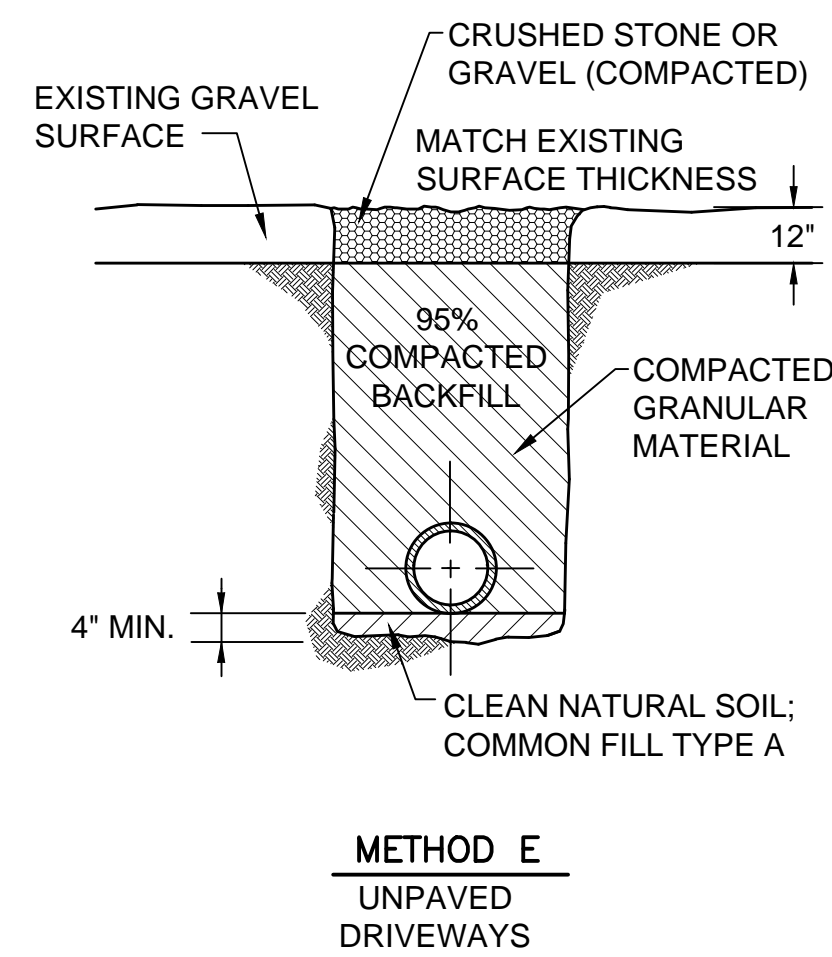
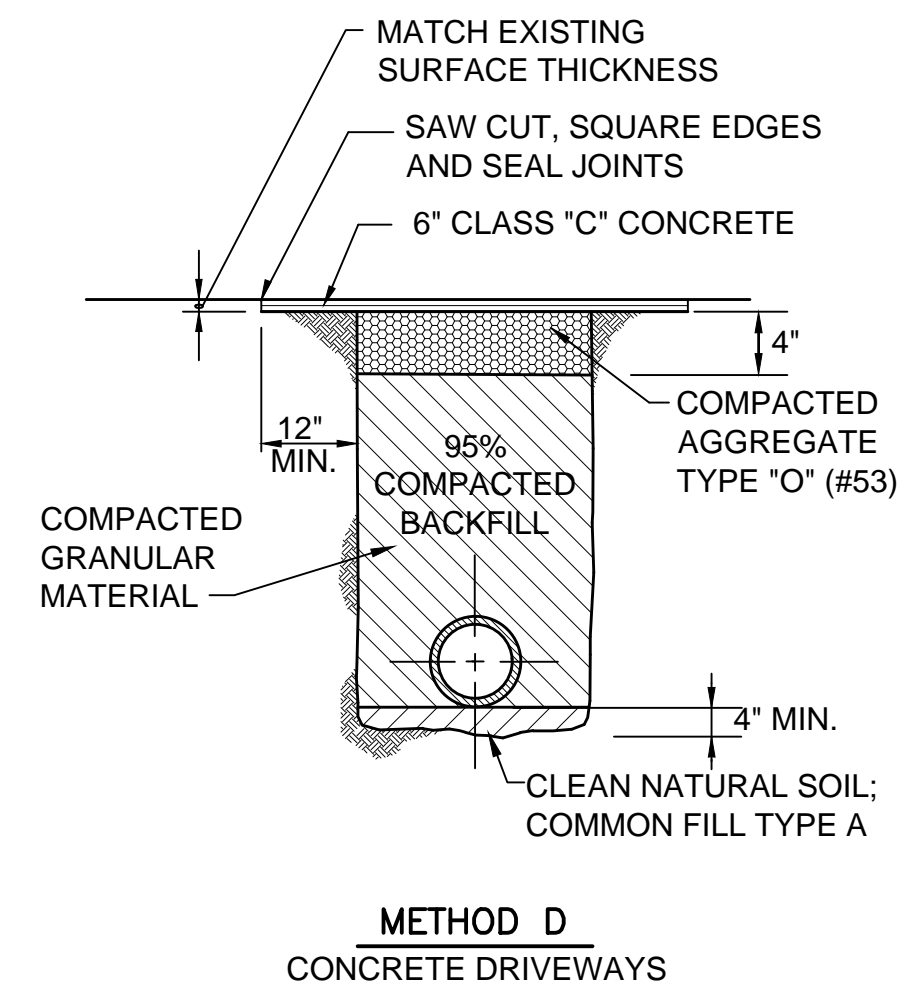
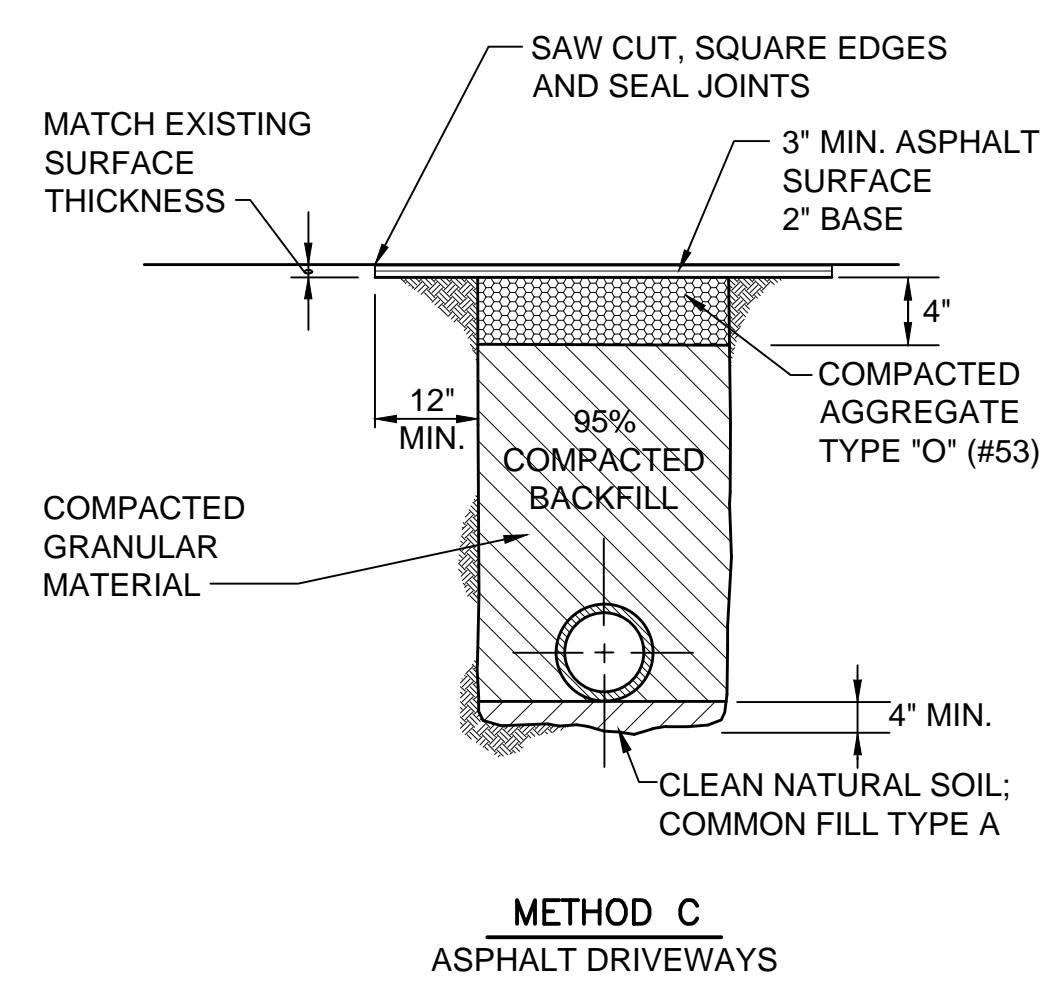
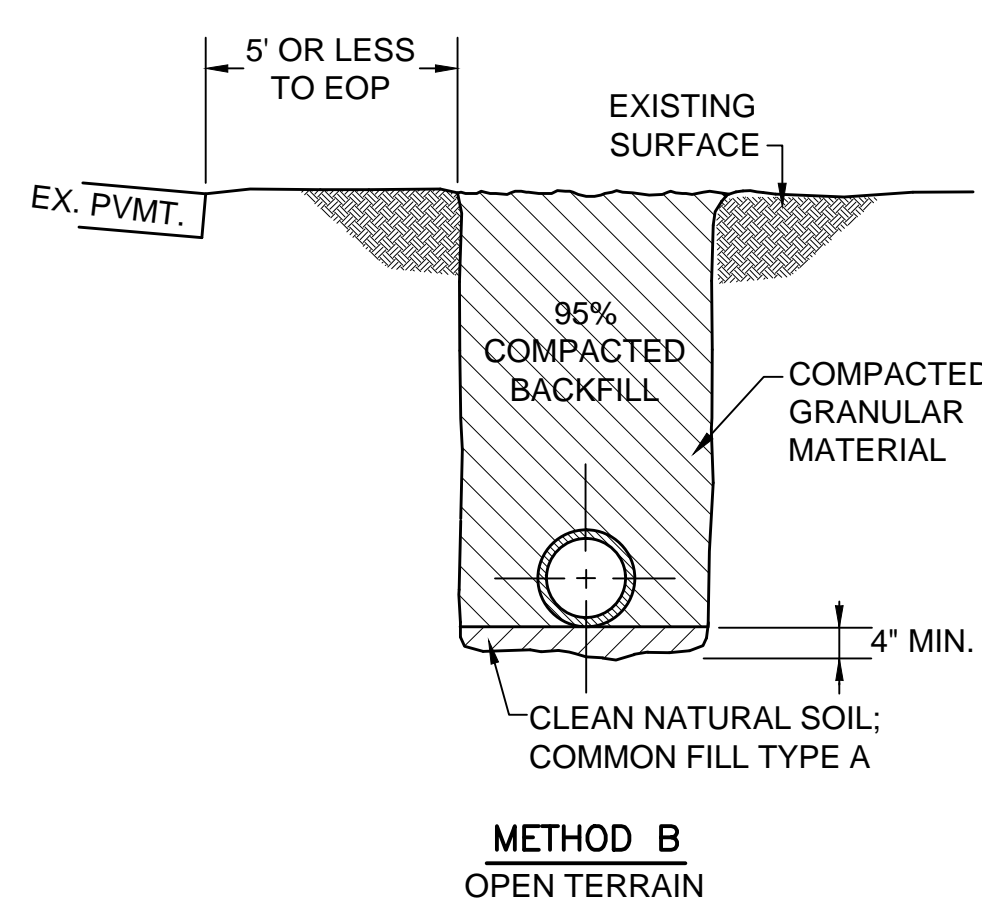
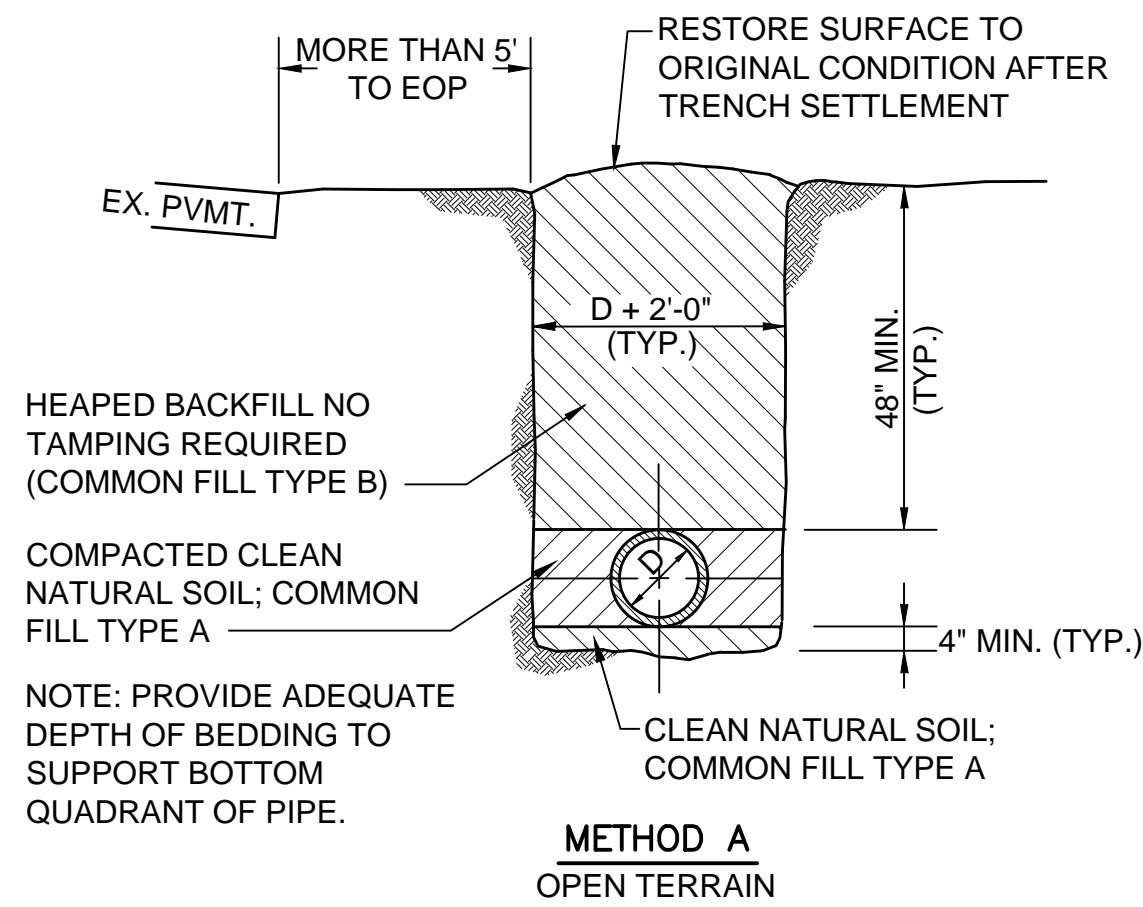


## DETAIL FIRE HYDRANT ASSEMBLY

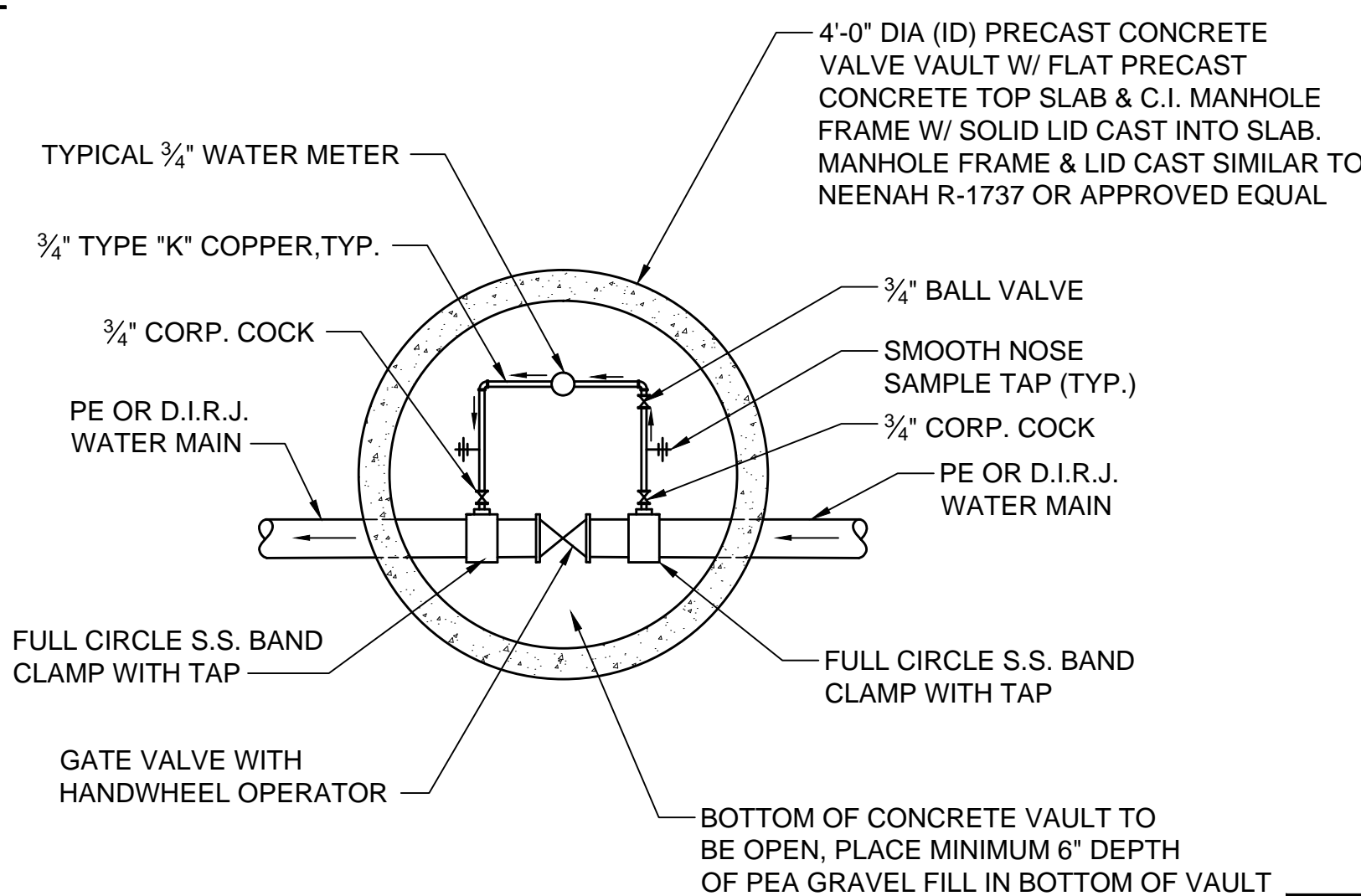
PLUGS								
SIZE	4"	6"	8"	12"	16"	18"	20"	24"
D	16"	18"	18"	24"	24"	30"	30"	30"
L	16"	18"	22"	30"	48"	48"	48"	48"
T	10"	12"	12"	12"	12"	18"	24"	24"
W	16"	18"	22"	24"	30"	30"	48"	48"
11 1/4", 22 1/2" & 45" BENDS								
SIZE	4"	6"	8"	12"	16"	18"	20"	24"
D	6"	6"	6"	6"	6"	8"	16"	16"
L	12"	14"	16"	20"	34"	40"	45"	52"
T	12"	14"	14"	16"	28"	33"	37"	46"
W	10"	12"	14"	18"	22"	25"	28"	32"
90° BENDS								
SIZE	4"	6"	8"	12"	16"	18"	20"	24"
D	8"	8"	10"	12"	12"	16"	20"	20"
L	20"	24"	27"	34"	48"	51"	54"	70"
T	10"	16"	18"	22"	36"	40"	44"	50"
W	12"	12"	16"	24"	28"	34"	40"	44"
TEES								
SIZE	4"	6"	8"	12"	16"	18"	20"	24"
D	8"	8"	12"	12"	12"	16"	38"	38"
L	10"	18"	24"	27"	28"	30"	48"	48"
W	16"	12"	18"	24"	28"	34"	48"	48"
T	12"	12"	15"	18"	20"	22"	24"	24"
VERTICAL BEND & STRAIGHT PIPE								
SIZE	4"	6"	8"	12"	16"	18"	20"	24"
D	12"	15"	15"	18"	21"	21"	24"	24"
L	18"	24"	24"	30"	36"	36"	36"	42"

NOTE:  
DEPTH "D" MAY BE GREATER THAN SPECIFIED TO ALLOW WORKING SPACE. BLOCKING MUST BE PLACED AGAINST UNDISTURBED EARTH.

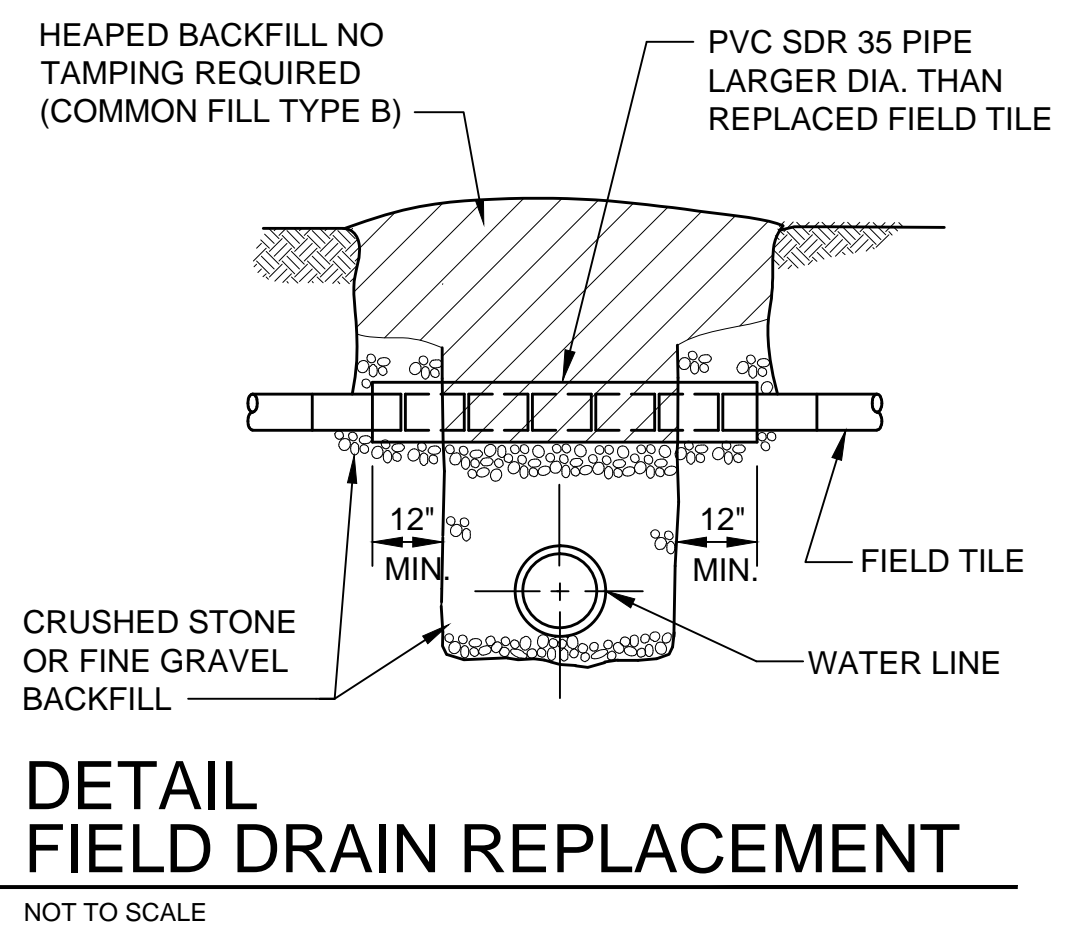
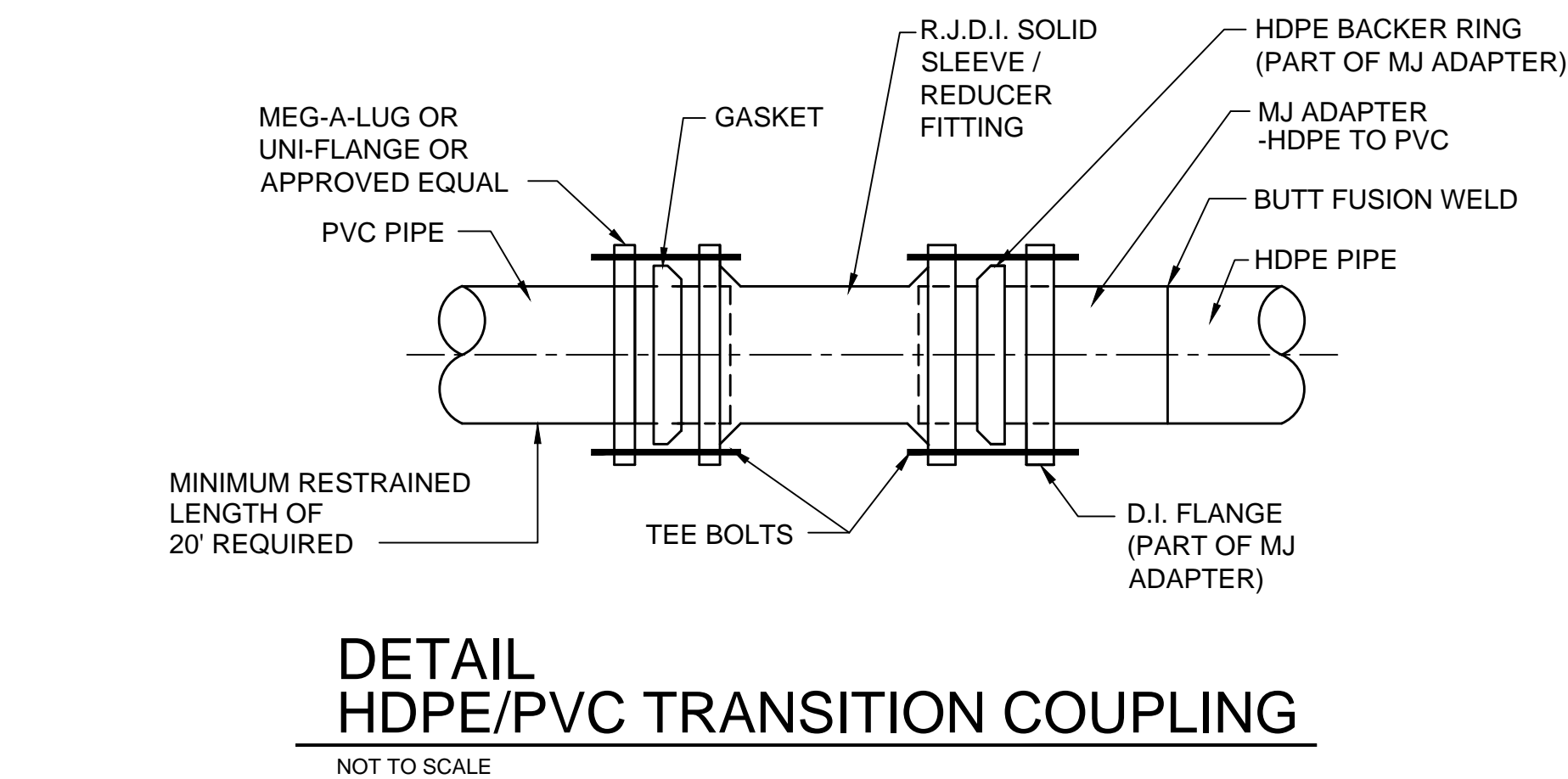
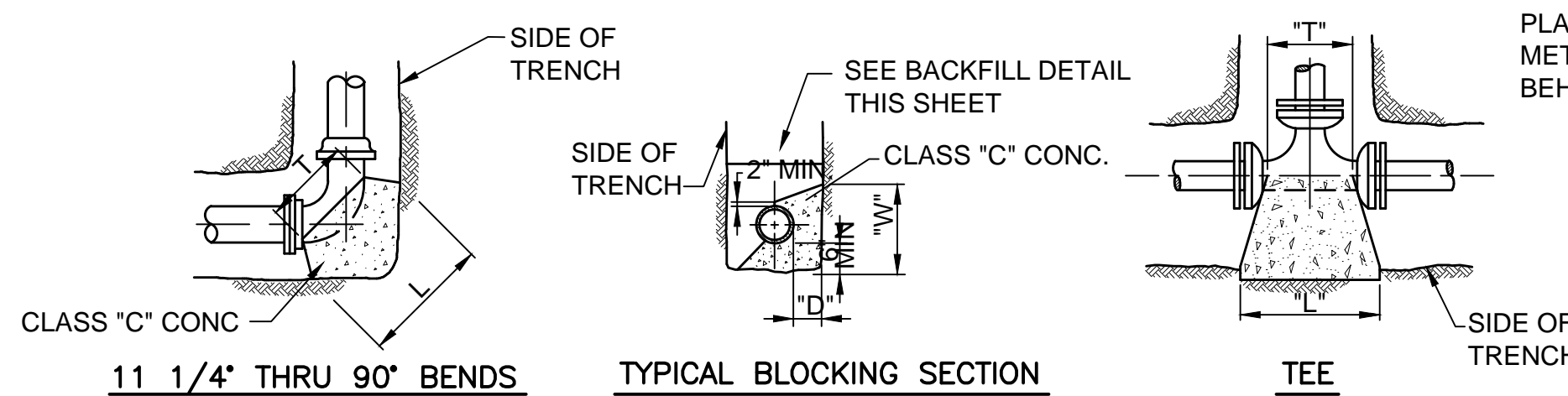
## DETAILS - CONCRETE THRUST BLOCKS



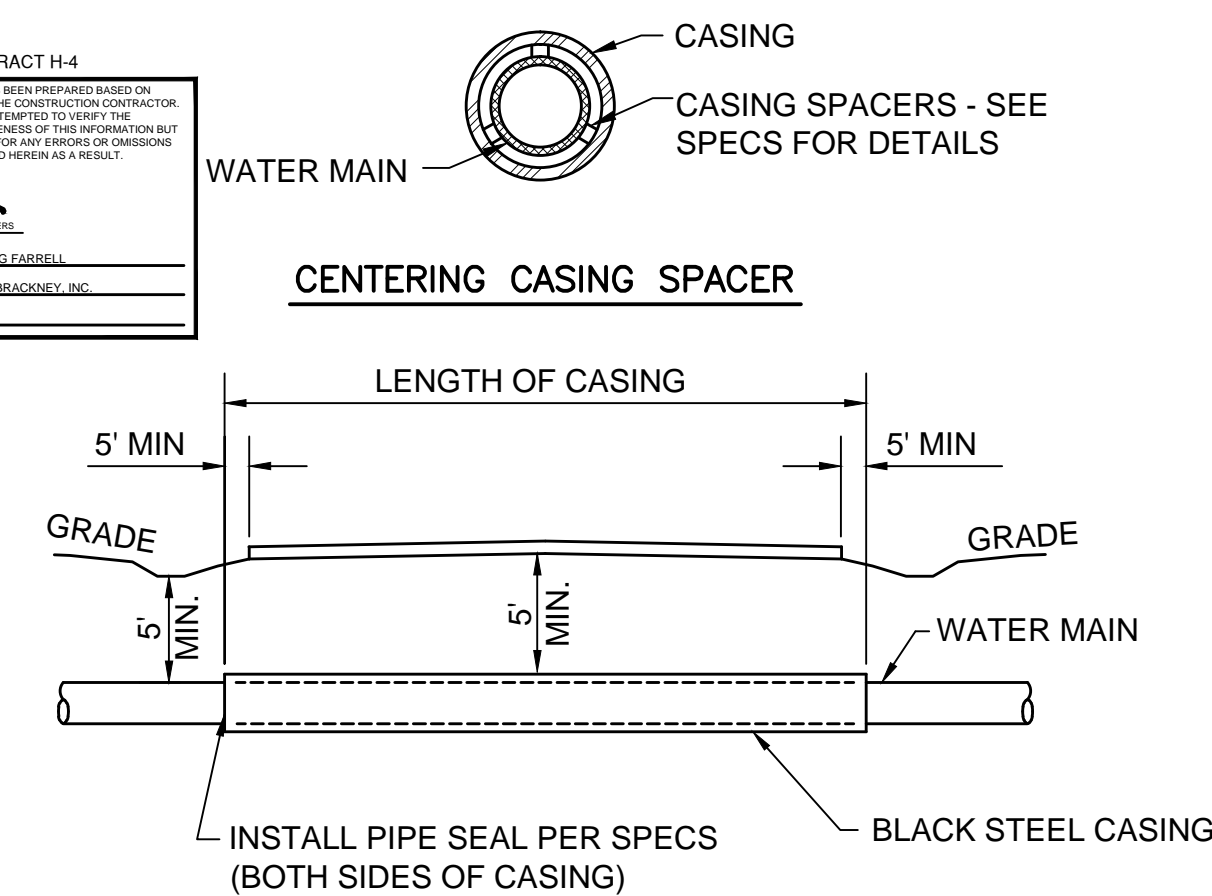
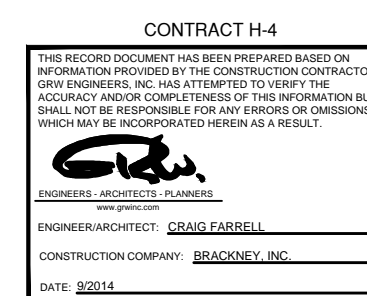
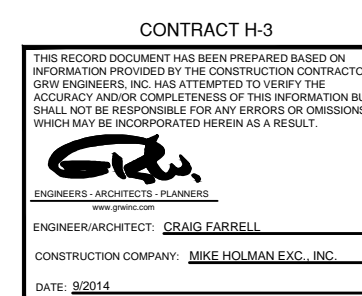
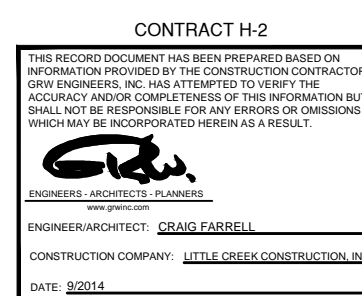
## BEDDING / BACKFILL / PAVEMENT REPLACEMENT DETAILS



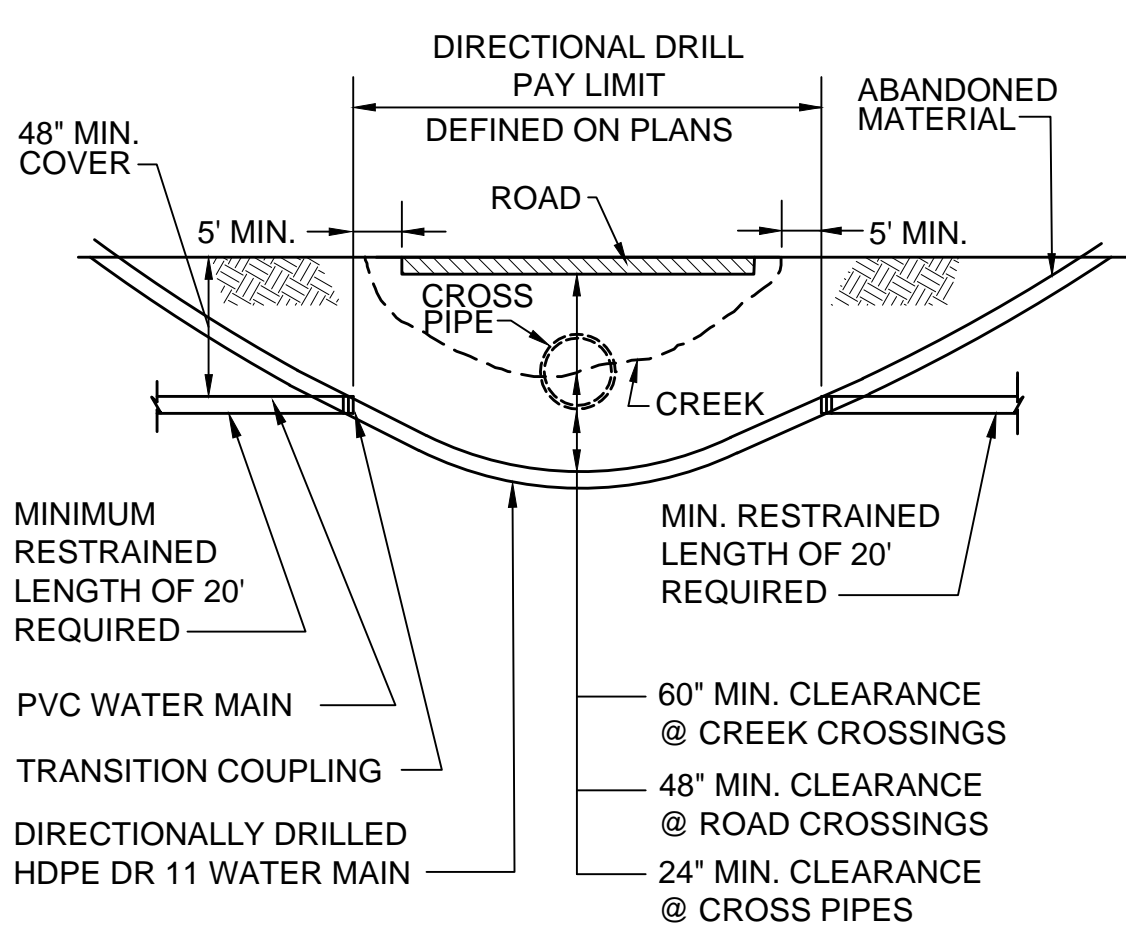
## DETAIL LEAK DETECTION AND SAMPLING VAULT



## DETAIL FIELD DRAIN REPLACEMENT



## DETAILS TYPICAL CASING



## DETAIL DIRECTIONAL DRILLING