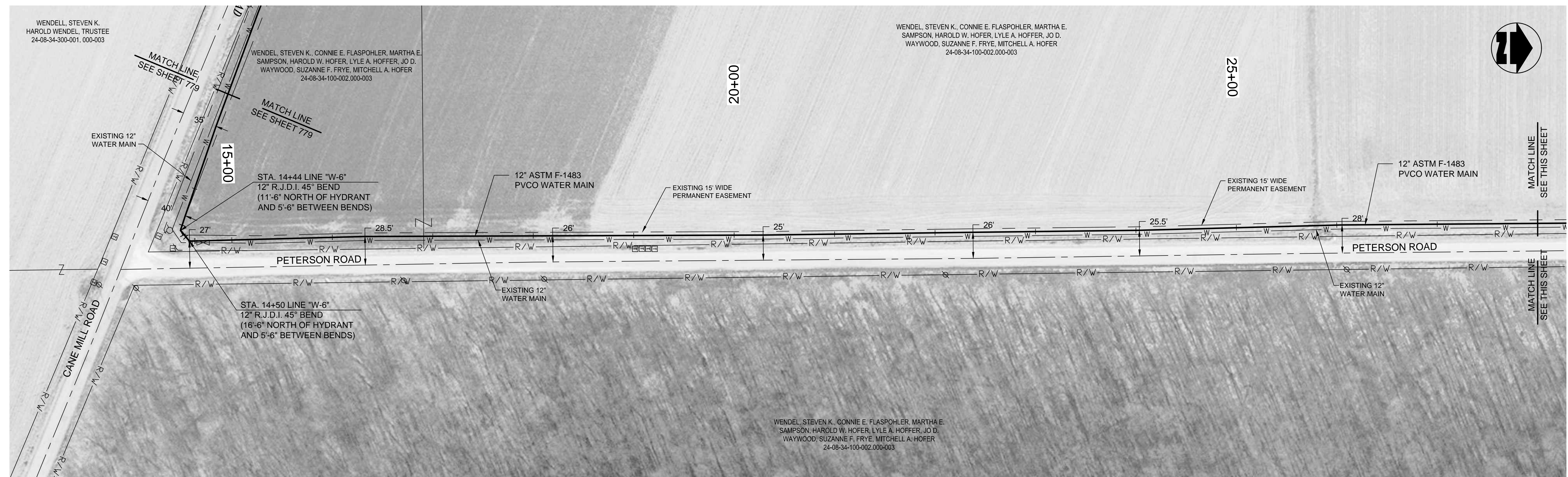


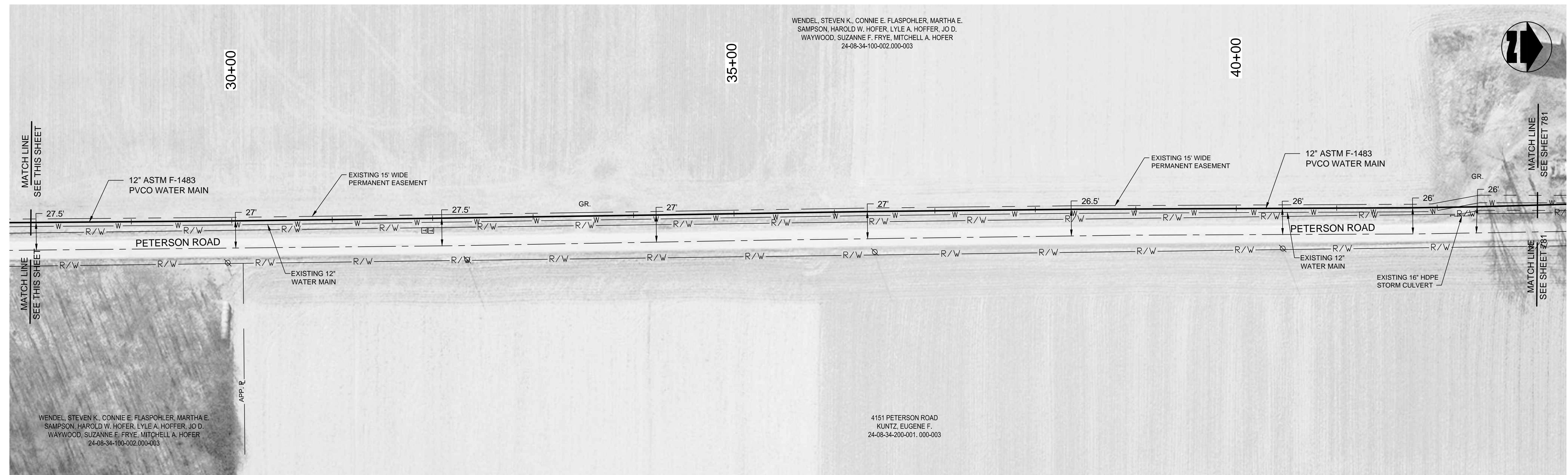
WENDELL, STEVEN K.
HAROLD WENDEL, TRUSTEE
24-08-34-300-001.000-003

WENDEL, STEVEN K., CONNIE E. FLASPOHLER, MARTHA E.
SAMPSON, HAROLD W. HOFER, LYLE A. HOFFER, JO D.
WAYWOOD, SUZANNE F. FRYE, MITCHELL A. HOFER
24-08-34-100-002.000-003

WENDEL, STEVEN K., CONNIE E. FLASPOHLER, MARTHA E.
SAMPSON, HAROLD W. HOFER, LYLE A. HOFFER, JO D.
WAYWOOD, SUZANNE F. FRYE, MITCHELL A. HOFER
24-08-34-100-002.000-003



PLAN VIEW - STA. 13+00 TO STA. 28+00 LINE "W-6"



PLAN VIEW - STA. 28+00 TO STA. 43+00 LINE "W-6"

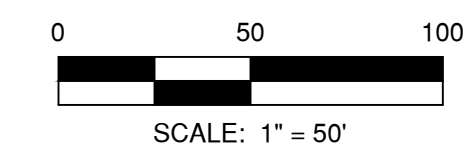
NOTES:

1. THE UTILITIES AND THEIR LOCATION SHOWN ON PLANS ARE APPROXIMATE. CONTRACTOR SHALL VERIFY ALL UTILITIES IN THE FIELD AND NOTIFY ALL UTILITY COMPANIES PRIOR TO INSTALLATION OF THE WATER LINE.
2. ALL PIPING SHALL BE CLASS 200 UNLESS OTHERWISE NOTED.
3. 48" MINIMUM COVER REQUIRED OVER TOP OF WATER LINE UNLESS OTHERWISE NOTED.

THIS RECORD DOCUMENT HAS BEEN PREPARED BASED ON INFORMATION PROVIDED BY THE CONSTRUCTION CONTRACTOR. GRW ENGINEERS, INC. HAS ATTEMPTED TO VERIFY THE ACCURACY AND/OR COMPLETENESS OF THIS INFORMATION BUT SHALL NOT BE RESPONSIBLE FOR ANY ERRORS OR OMISSIONS WHICH MAY BE INCORPORATED HEREIN AS A RESULT.

ENGINEERS - ARCHITECTS - PLANNERS
www.grwinc.com

ENGINEER/ARCHITECT: CRAIG FARRELL
CONSTRUCTION COMPANY: BRACKNEY, INC.
DATE: 9/2014



This document, originally issued, sealed, and signed by Daniel R. Cutshaw, Indiana Professional Engineer, No. 11200431, on April 15, 2013, shall not be used in lieu of a certified document.

GRW PROJECT NO. 3916-01
CLIENT PROJECT NO. H-4



PETERSON ROAD
CONTRACT H-4 - CANE MILL AREA
DIVISION H - WATERWORKS SYSTEM IMPROVEMENTS
HOOSIER HILLS REGIONAL WATER DISTRICT
RIPLEY AND FRANKLIN COUNTIES, INDIANA

DESIGNED	ALW	DRAWN	JAJ	REVIEWED	CJF	APPROVED	DRC
NO.	1.	AS-BUILT REVISION					

SCALE CHECK: THIS MARK SHOULD MEASURE EXACTLY 1" WHEN PLOTTED

DATE: APRIL 2013
SCALE: 1"=50'
SHEET NO.

780