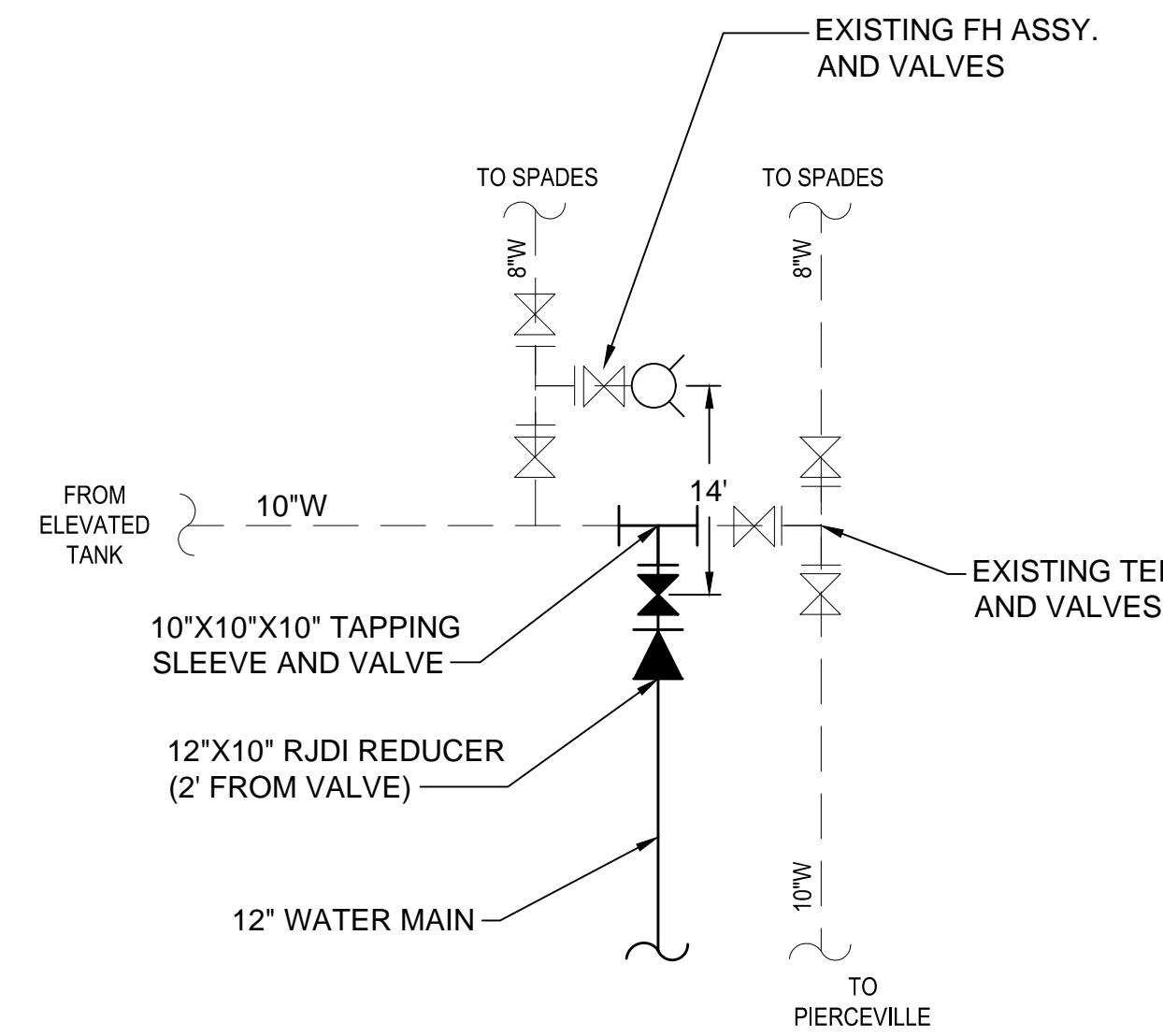




PLAN VIEW - STA. 595+00 TO E.O.P. STA. 607+32 LINE "W-2"



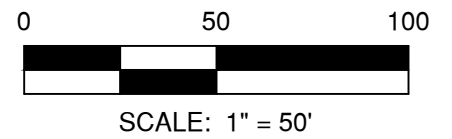
1 DETAIL NOT TO SCALE

NOTE:
ELEVATED "OLD MILAN" TANK WAS REPLACED AFTER THIS AERIAL PHOTO WAS TAKEN. ACTUAL EXISTING TANK AND RELATED EXISTING PIPING SHOWN IS BASED ON THE LATEST INFORMATION AVAILABLE.

THIS RECORD DOCUMENT HAS BEEN PREPARED BASED ON INFORMATION PROVIDED BY THE CONSTRUCTION CONTRACTOR. GRW ENGINEERS, INC. HAS ATTEMPTED TO VERIFY THE ACCURACY AND/OR COMPLETENESS OF THIS INFORMATION BUT SHALL NOT BE RESPONSIBLE FOR ANY ERRORS OR OMISSIONS WHICH MAY BE INCORPORATED HEREIN AS A RESULT.

GRW
ENGINEERS - ARCHITECTS - PLANNERS
www.grwinc.com

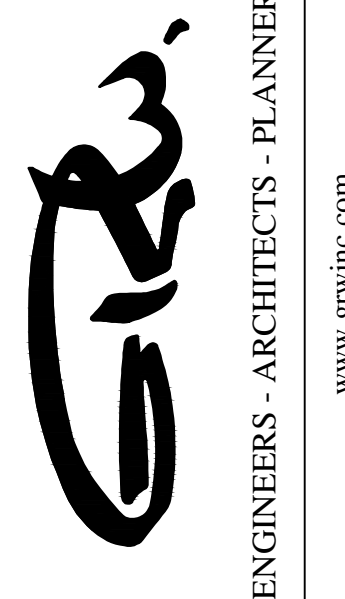
ENGINEER/ARCHITECT: CRAIG FARRELL
CONSTRUCTION COMPANY: LITTLE CREEK CONSTRUCTION, INC.
DATE: 9/2014



- NOTES:
1. THE UTILITIES AND THEIR LOCATION SHOWN ON PLANS ARE APPROXIMATE. CONTRACTOR SHALL VERIFY ALL UTILITIES IN THE FIELD AND NOTIFY ALL UTILITY COMPANIES PRIOR TO INSTALLATION OF THE WATER LINE.
 2. ALL PIPING SHALL BE CLASS 200 UNLESS OTHERWISE NOTED.
 3. 48" MINIMUM COVER REQUIRED OVER TOP OF WATER LINE UNLESS OTHERWISE NOTED.

This document, originally issued, sealed, and signed by Daniel R. Cutshaw, Indiana Professional Engineer, No. 11200431, on April 19, 2013, shall not be used in lieu of a certified document.

GRW PROJECT NO. 3916-01
CLIENT CONTRACT NO. H-2



C.R. 475 N. & STATE ROAD 101
CONTRACT H-2 - VERSAILLES AREA
DIVISION H - WATERWORKS SYSTEM IMPROVEMENTS
HOOSIER HILLS REGIONAL WATER DISTRICT
RIPLEY AND FRANKLIN COUNTIES, INDIANA

DESIGNED	ALW
DRAWN	JAJ
REVIEWED	CJF
APPROVED	DRC

NO.	REVISIONS	DATE	BY
1.	AS-BUILT REVISION	9/2014	JEC

DATE: APRIL 2013
SCALE: 1"=50'
SHEET NO.