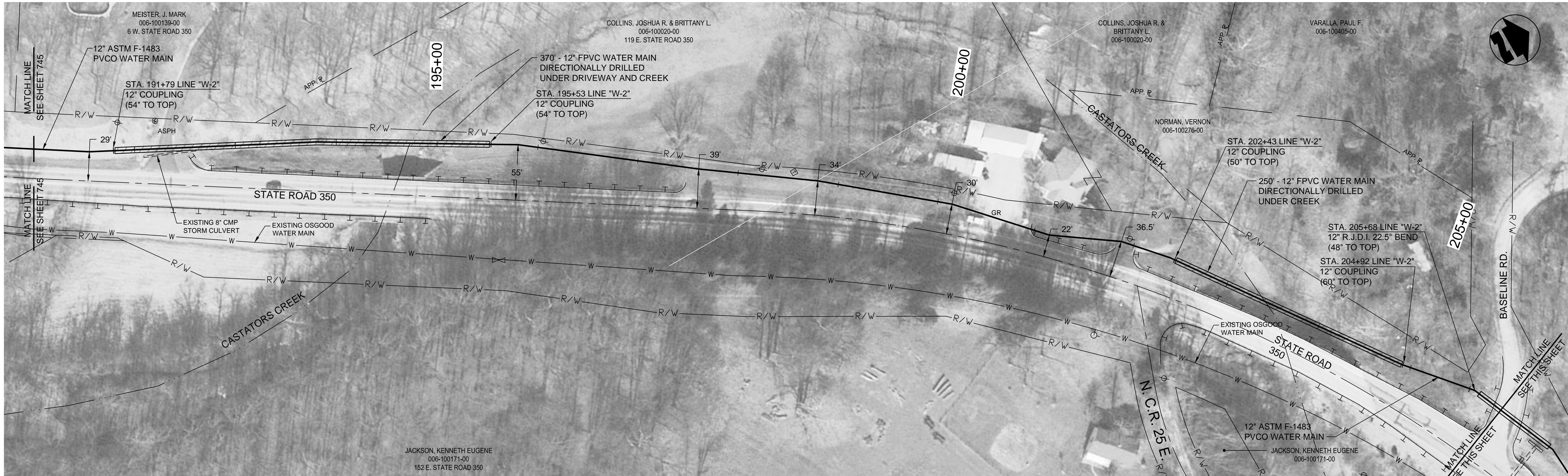
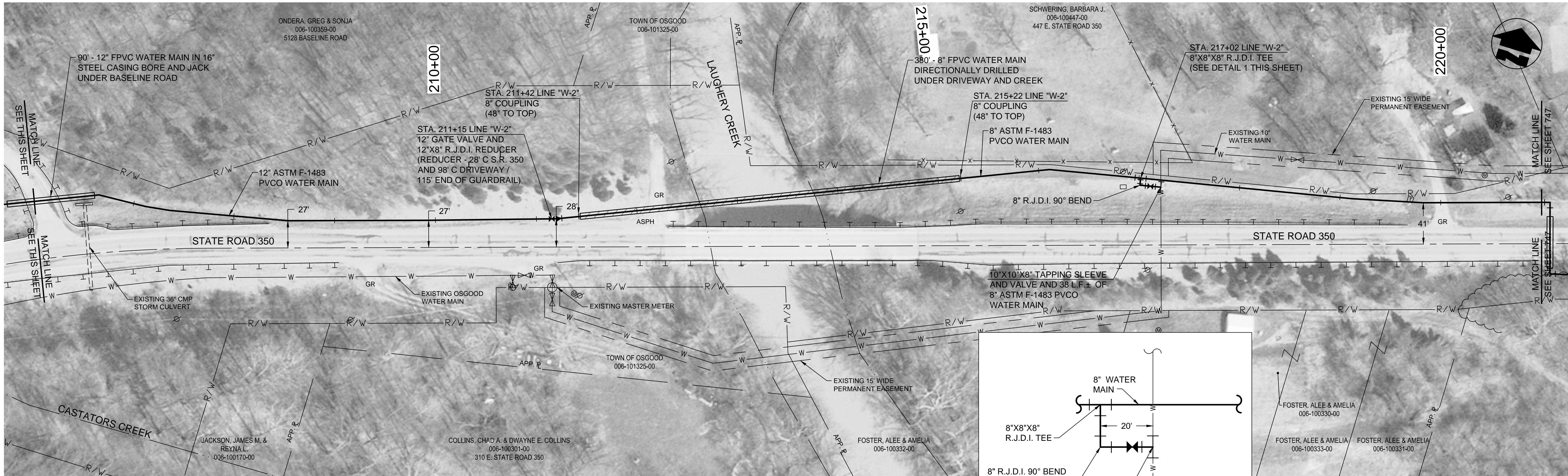


PRINTED: 11/17/2014 @ 12:51PM

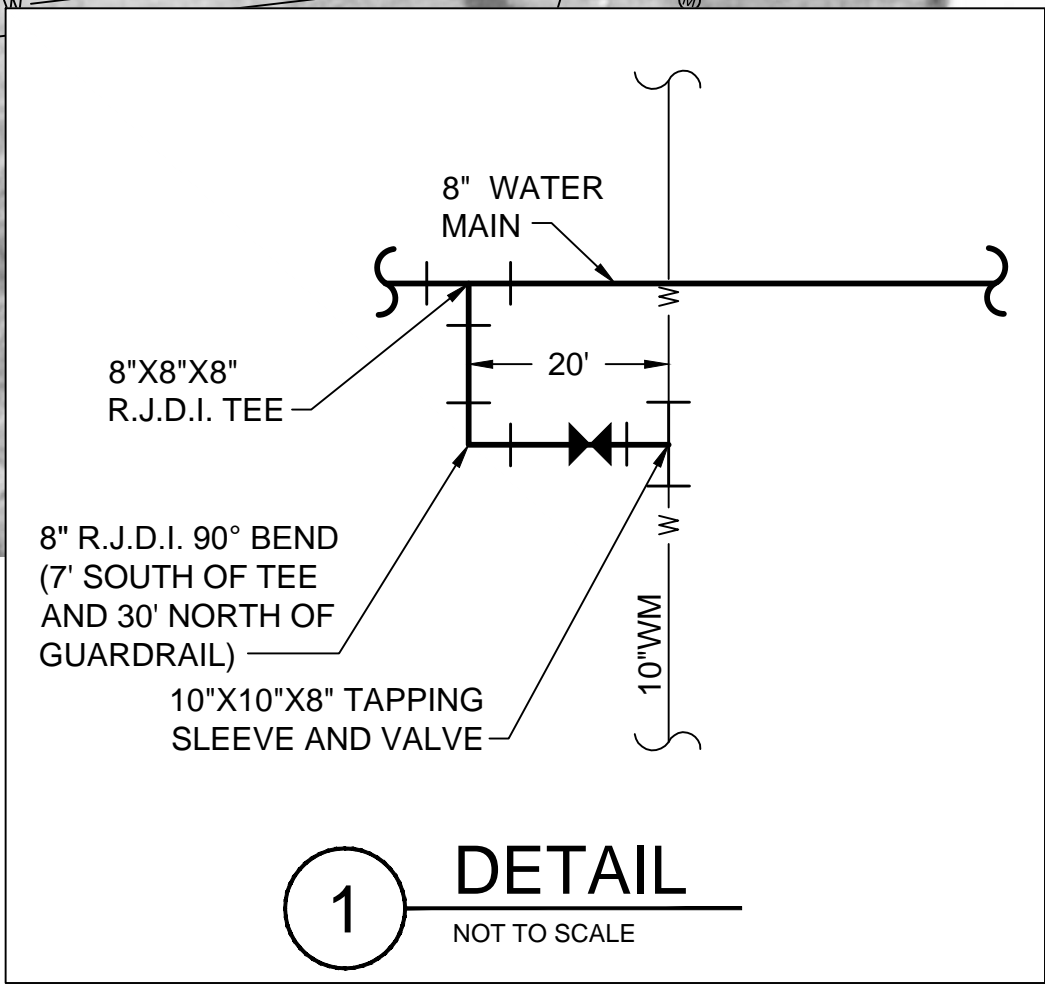
FILE NAME: Y:\3916-HRW\DW-Div-H\Working Drawings\Civil\3DH-2\3916-746.dwg



PLAN VIEW - STA. 191+00 TO STA. 206+00 LINE "W-2"



PLAN VIEW - STA. 206+00 TO STA. 221+00 LINE "W-2"



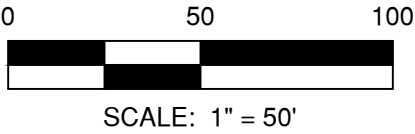
THIS RECORD DOCUMENT HAS BEEN PREPARED BASED ON INFORMATION PROVIDED BY THE CONSTRUCTION CONTRACTOR. GRW ENGINEERS, INC. HAS ATTEMPTED TO VERIFY THE ACCURACY AND/OR COMPLETENESS OF THIS INFORMATION BUT SHALL NOT BE RESPONSIBLE FOR ANY ERRORS OR OMISSIONS WHICH MAY BE INCORPORATED HEREIN AS A RESULT.

GRW
ENGINEERS - ARCHITECTS - PLANNERS
www.grwinc.com

ENGINEER/ARCHITECT: **CRAIG FARRELL**

CONSTRUCTION COMPANY: **LITTLE CREEK CONSTRUCTION, INC.**

DATE: 9/2014



- NOTES:
- THE UTILITIES AND THEIR LOCATION SHOWN ON PLANS ARE APPROXIMATE. CONTRACTOR SHALL VERIFY ALL UTILITIES IN THE FIELD AND NOTIFY ALL UTILITY COMPANIES PRIOR TO INSTALLATION OF THE WATER LINE.
 - ALL PIPING SHALL BE CLASS 200 UNLESS OTHERWISE NOTED.
 - 48" MINIMUM COVER REQUIRED OVER TOP OF WATER LINE UNLESS OTHERWISE NOTED.

STATE ROAD 350
CONTRACT H-2 - VERSAILLES AREA
DIVISION H - WATERWORKS SYSTEM IMPROVEMENTS
HOOSIER HILLS REGIONAL WATER DISTRICT
RIPLEY AND FRANKLIN COUNTIES, INDIANA

NO.	REVISIONS	DESCRIPTION	DATE	BY	DESIGNED	DRAWN	REVIEWED	APPROVED	SCALE CHECK
					ALW	JAJ	CJF	DRC	
1.	AS-BUILT REVISION		9/2014	JEC					THIS MARK SHOULD MEASURE EXACTLY 1" WHEN PLOTTED

DATE: **APRIL 2013**
SCALE: **1"=50'**
SHEET NO.

This document, originally issued, sealed, and signed by Daniel R. Cutshaw, Indiana Professional Engineer, No. 11200431, on April 19, 2013, shall not be used in lieu of a certified document.

GRW PROJECT NO. 3916-01
CLIENT CONTRACT NO. H-2



ALL RIGHTS RESERVED. NO PART OF THIS DOCUMENT SHALL BE REPRODUCED IN WHOLE OR IN PART WITHOUT THE WRITTEN PERMISSION OF GRW ENGINEERS, INC.