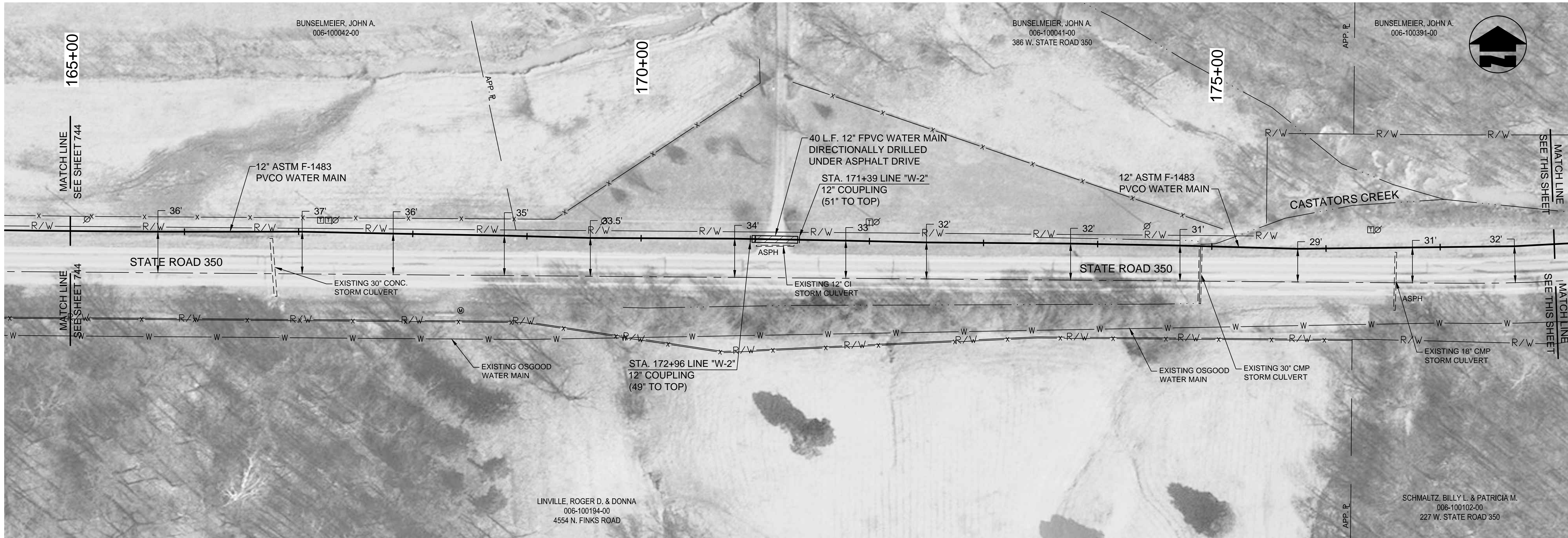
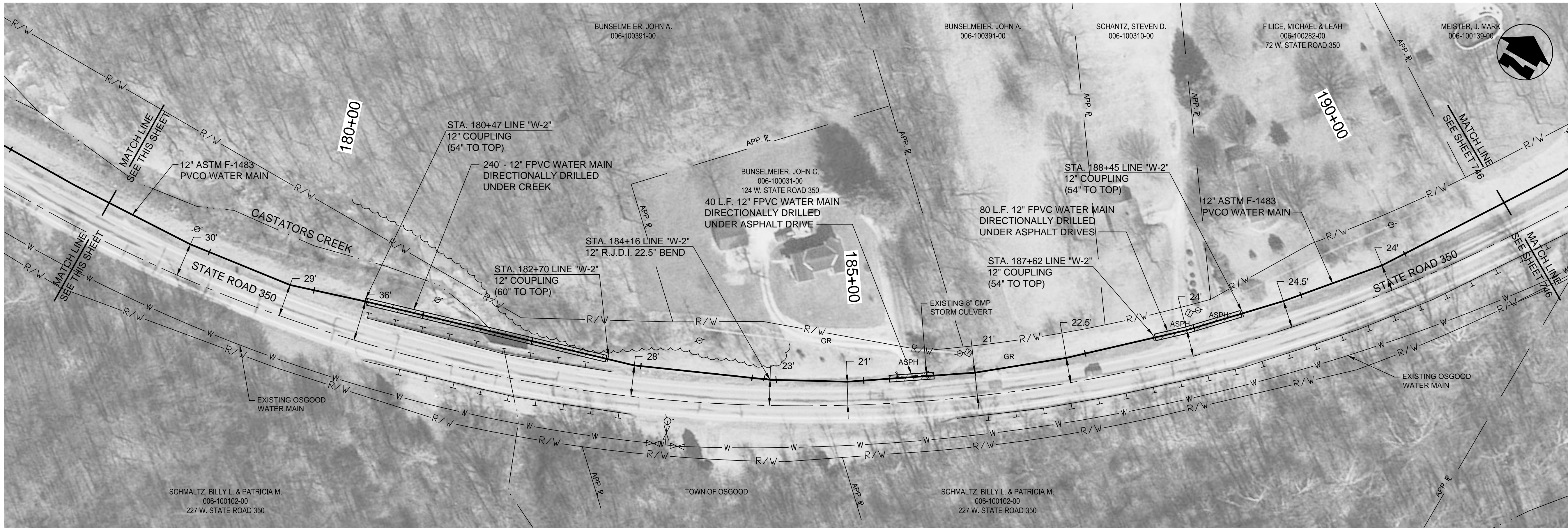


PRINTED: 11/17/2014 @ 12:48PM

FILE NAME: Y:\3916-HRRWD-Div-H\Working Drawings\CUV 3DH-2\3916-745.dwg



PLAN VIEW - STA. 165+00 TO STA. 178+00 LINE "W-2"



PLAN VIEW - STA. 178+00 TO STA. 191+00 LINE "W-2"

NOTES:

1. THE UTILITIES AND THEIR LOCATION SHOWN ON PLANS ARE APPROXIMATE. CONTRACTOR SHALL VERIFY ALL UTILITIES IN THE FIELD AND NOTIFY ALL UTILITY COMPANIES PRIOR TO INSTALLATION OF THE WATER LINE.
2. ALL PIPING SHALL BE CLASS 200 UNLESS OTHERWISE NOTED.
3. 48" MINIMUM COVER REQUIRED OVER TOP OF WATER LINE UNLESS OTHERWISE NOTED.

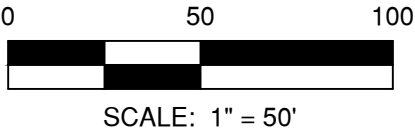
THIS RECORD DOCUMENT HAS BEEN PREPARED BASED ON INFORMATION PROVIDED BY THE CONSTRUCTION CONTRACTOR. GRW ENGINEERS, INC. HAS ATTEMPTED TO VERIFY THE ACCURACY AND/OR COMPLETENESS OF THIS INFORMATION BUT SHALL NOT BE RESPONSIBLE FOR ANY ERRORS OR OMISSIONS WHICH MAY BE INCORPORATED HEREIN AS A RESULT.

GRW
ENGINEERS - ARCHITECTS - PLANNERS
www.grwinc.com

ENGINEER/ARCHITECT: CRAIG FARRELL

CONSTRUCTION COMPANY: LITTLE CREEK CONSTRUCTION, INC.

DATE: 9/2014



This document, originally issued, sealed, and signed by Daniel R. Cutshaw, Indiana Professional Engineer, No. 11200431, on April 19, 2013, shall not be used in lieu of a certified document.

GRW PROJECT NO. 3916-01

CLIENT CONTRACT NO. H-2

ALL RIGHTS RESERVED. NO PART OF THIS DOCUMENT SHALL BE REPRODUCED IN WHOLE OR IN PART WITHOUT THE WRITTEN PERMISSION OF GRW ENGINEERS, INC.

GRW
ENGINEERS - ARCHITECTS - PLANNERS
www.grwinc.com

STATE ROAD 350

CONTRACT H-2 - VERSAILLES AREA

DIVISION H - WATERWORKS SYSTEM IMPROVEMENTS

HOOSIER HILLS REGIONAL WATER DISTRICT

RIPLEY AND FRANKLIN COUNTIES, INDIANA

REVISIONS	DATE	BY	DESCRIPTION	DESIGNED	ALW	DRAWN	JAJ	REVIEWED	CJF	APPROVED	DRC
1.	9/2014	JEC	AS-BUILT REVISION								

DATE: APRIL 2013

SCALE: 1"=50'

SHEET NO.

745