

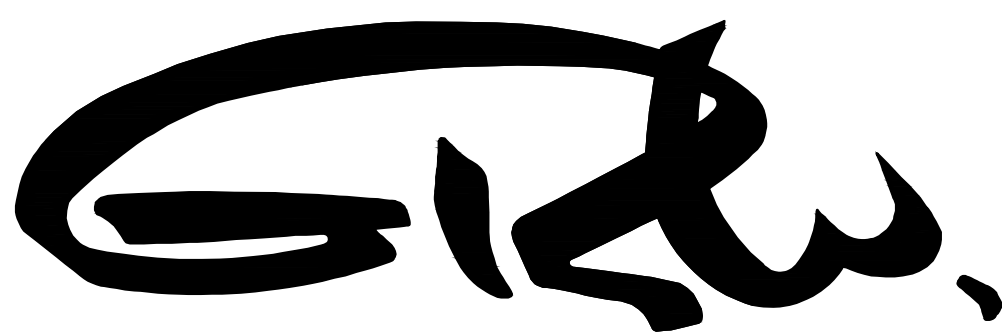
# HOOSIER HILLS REGIONAL WATER DISTRICT

## DIVISION "H" WATERWORKS SYSTEM IMPROVEMENTS

CONTRACT "H-2" VERSAILLES AREA - WATER MAIN IMPROVEMENTS  
CONTRACT "H-3" PENNTOWN & HORSESHOE BEND AREA - WATER MAIN IMPROVEMENTS  
CONTRACT "H-4" CANE MILL AREA - WATER MAIN IMPROVEMENTS

HOOSIER HILLS REGIONAL WATER DISTRICT  
BOARD OF DIRECTORS

|                 |   |                 |
|-----------------|---|-----------------|
| GREGORY DOLE    | - | PRESIDENT       |
| TED MEER        | - | VICE PRESIDENT  |
| CHARLES HYNES   | - | SECRETARY       |
| JOHN AMBERGER   | - | TREASURER       |
| ROY B. MEYER    | - | ASST. TREASURER |
| RANDY SCUDDER   | - | BOARD MEMBER    |
| RUSSELL MORTARA | - | BOARD MEMBER    |
| ANTHONY CLARK   | - | BOARD MEMBER    |
| DOUG NOBBE      | - | BOARD MEMBER    |
| SCOTT STIRN     | - | GENERAL MANAGER |



ENGINEERS - ARCHITECTS - PLANNERS

www.grwinc.com

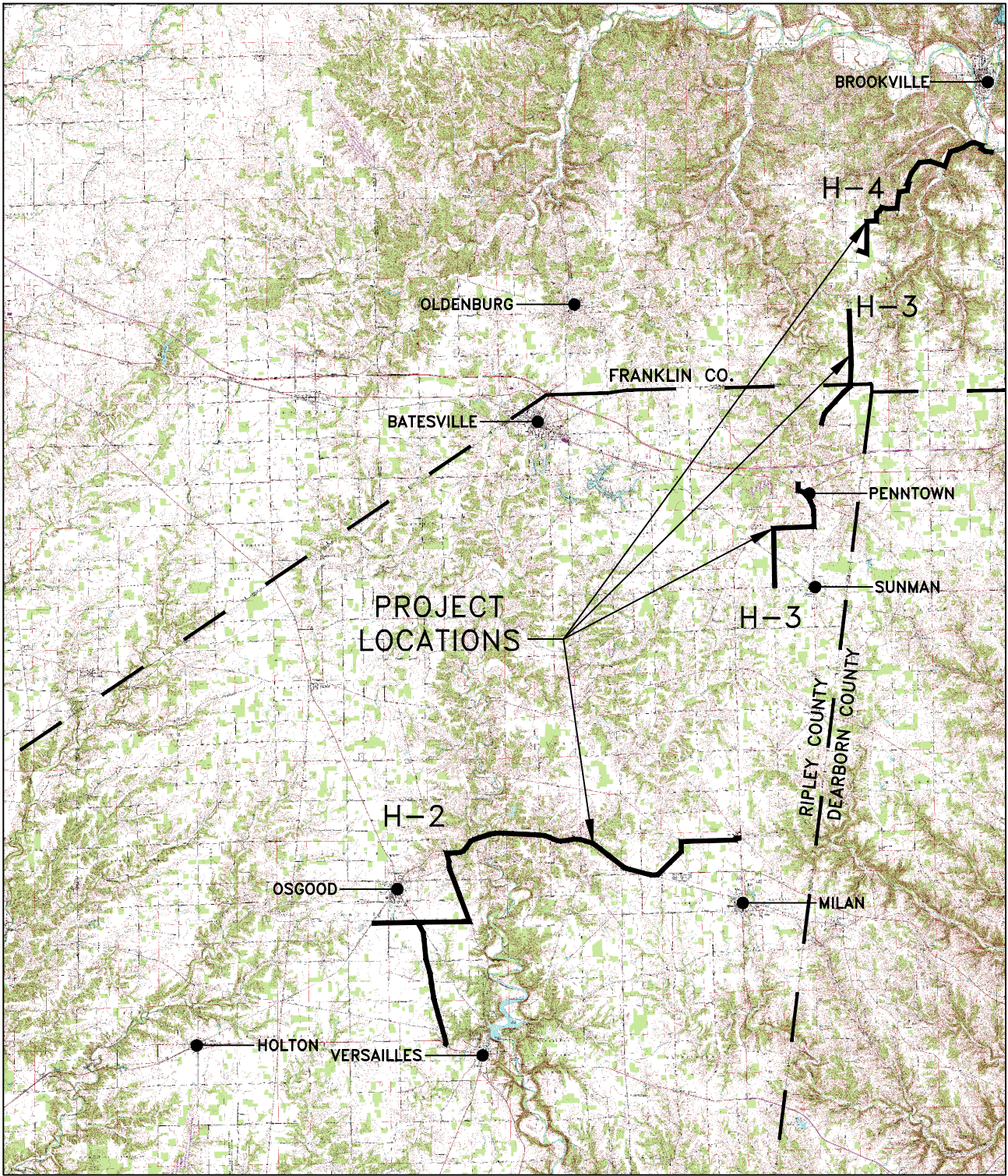
This document, originally issued, sealed, and signed by Daniel R. Cutshaw, Indiana Professional Engineer, No. 11200431, on April 19, 2013, shall not be used in lieu of a certified document.

DANIEL R. CUTSHAW, P.E.  
INDIANA REG. NO. 11200431

DATE: APRIL 19, 2013

APRIL 2013

| CONTRACT H-2  | CONTRACT H-3   | CONTRACT H-4   |
|---|--|--|
| <small>THIS RECORD DOCUMENT HAS BEEN PREPARED BASED ON INFORMATION PROVIDED BY THE CONSTRUCTION CONTRACTOR. GRW ENGINEERS, INC. HAS ATTEMPTED TO VERIFY THE ACCURACY AND/OR COMPLETENESS OF THIS INFORMATION BUT SHALL NOT BE RESPONSIBLE FOR ANY ERRORS OR OMISSIONS WHICH MAY BE INCORPORATED HEREIN AS A RESULT.</small><br><br><small>ENGINEERS - ARCHITECTS - PLANNERS<br/>www.grwinc.com</small><br>ENGINEER/ARCHITECT: CRAIG FARRELL<br>CONSTRUCTION COMPANY: LITTLE CREEK CONSTRUCTION, INC.<br>DATE: 9/2014 | <small>THIS RECORD DOCUMENT HAS BEEN PREPARED BASED ON INFORMATION PROVIDED BY THE CONSTRUCTION CONTRACTOR. GRW ENGINEERS, INC. HAS ATTEMPTED TO VERIFY THE ACCURACY AND/OR COMPLETENESS OF THIS INFORMATION BUT SHALL NOT BE RESPONSIBLE FOR ANY ERRORS OR OMISSIONS WHICH MAY BE INCORPORATED HEREIN AS A RESULT.</small><br><br><small>ENGINEERS - ARCHITECTS - PLANNERS<br/>www.grwinc.com</small><br>ENGINEER/ARCHITECT: CRAIG FARRELL<br>CONSTRUCTION COMPANY: MIKE HOLMAN EXC., INC.<br>DATE: 9/2014 | <small>THIS RECORD DOCUMENT HAS BEEN PREPARED BASED ON INFORMATION PROVIDED BY THE CONSTRUCTION CONTRACTOR. GRW ENGINEERS, INC. HAS ATTEMPTED TO VERIFY THE ACCURACY AND/OR COMPLETENESS OF THIS INFORMATION BUT SHALL NOT BE RESPONSIBLE FOR ANY ERRORS OR OMISSIONS WHICH MAY BE INCORPORATED HEREIN AS A RESULT.</small><br><br><small>ENGINEERS - ARCHITECTS - PLANNERS<br/>www.grwinc.com</small><br>ENGINEER/ARCHITECT: CRAIG FARRELL<br>CONSTRUCTION COMPANY: BRACKNEY, INC.<br>DATE: 9/2014 |



SCALE: 1" = 20,000'

PLAN SET IS FULL SCALE ON 24"X36"  
AND HALF SCALE ON 12"X18"

