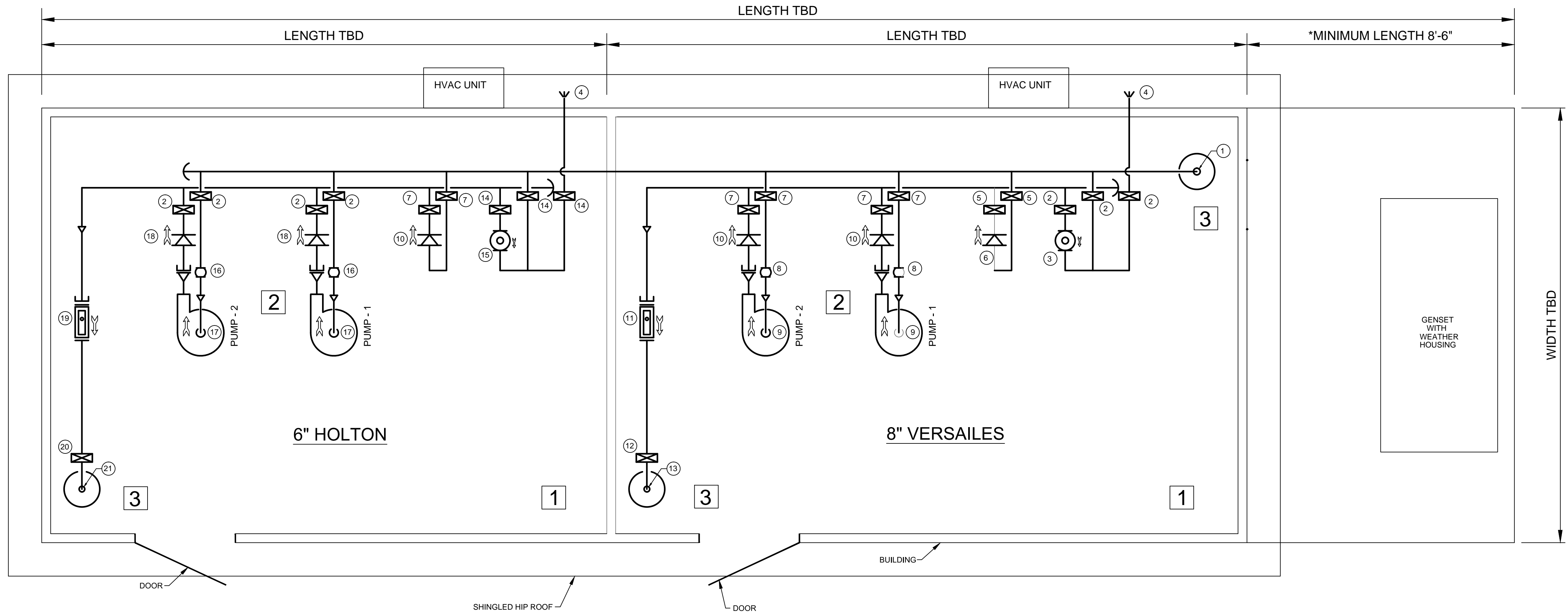
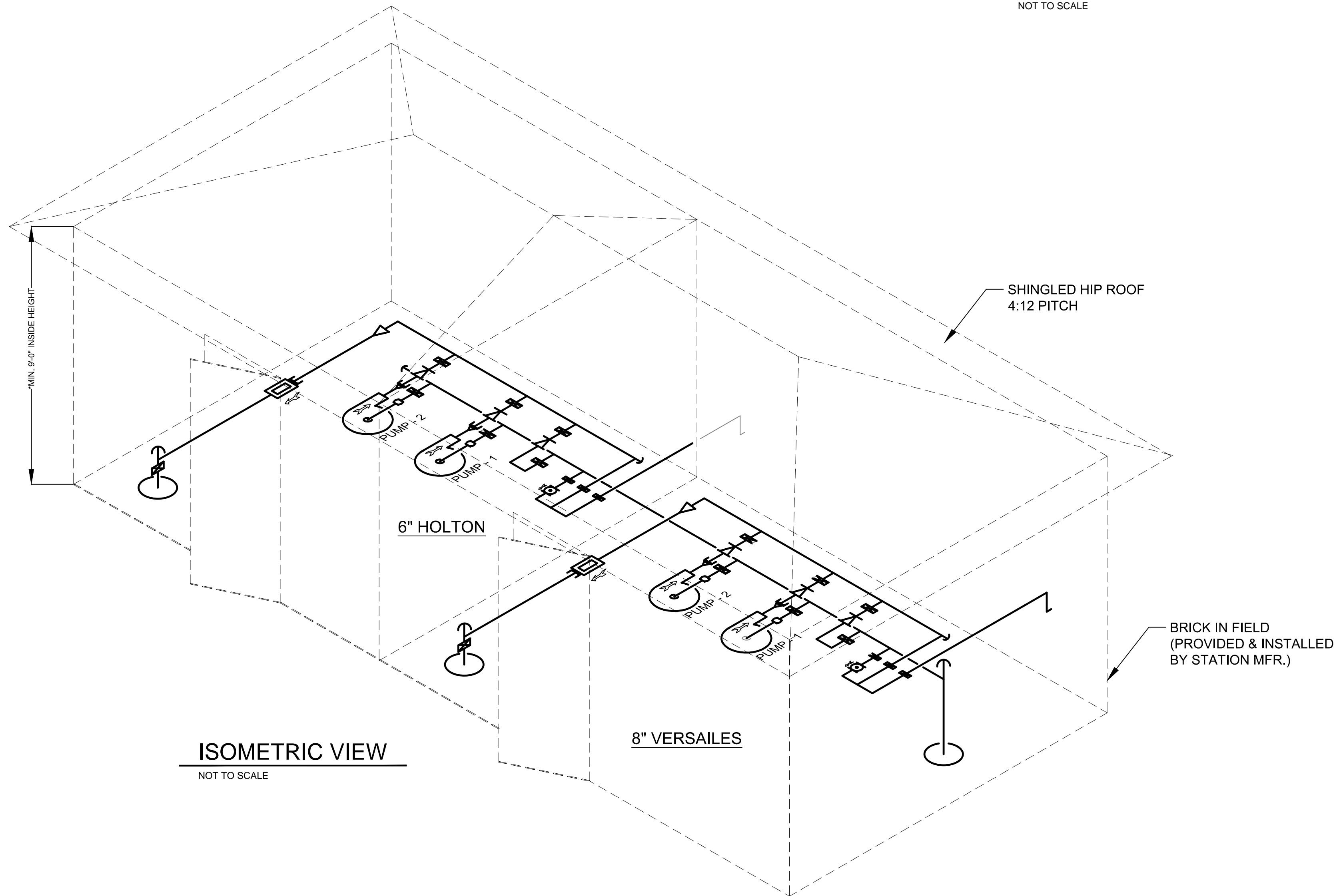


- 1 ELECTRICAL POWER, SERVICE AND CONTROL PANELS SHALL BE WALL MOUNTED ON SUPPORT CHANNEL AND TO MEET NEC 110-26 REQUIREMENTS EACH PANEL SHALL HAVE A COMPLETELY UNOBSTRUCTED 42" ACCESS AREA IN FRONT OF THE PANEL; SUCH AREA TO EXTEND FLOOR TO CEILING.
- 2 PIPING MUST BE ARRANGED THAT A MINIMUM 28" WIDE UNOBSTRUCTED WALKUP SERVICE SPACE ON THREE SIDES OF EACH PUMP IS PROVIDED WITHOUT CLIMBING OR STEPPING OVER ANY DEVICE OR PIPING.
- 3 OPENING LOCATIONS ARE TYPICAL. CONTRACTOR IS TO CONFIRM ACTUAL SIZE AND LOCATION WITH BOOSTER STATION MANUFACTURER.



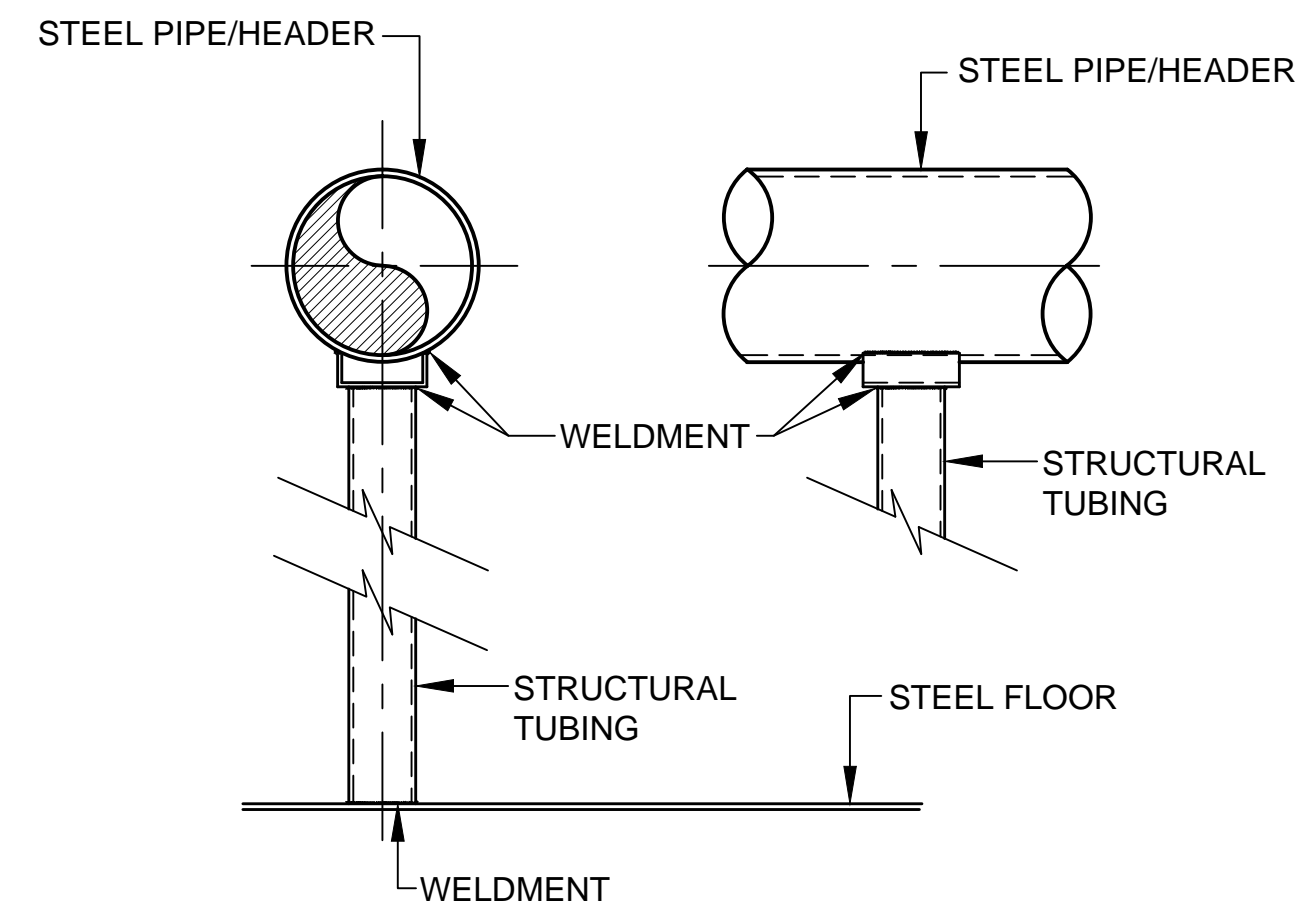
PLAN VIEW

NOT TO SCALE



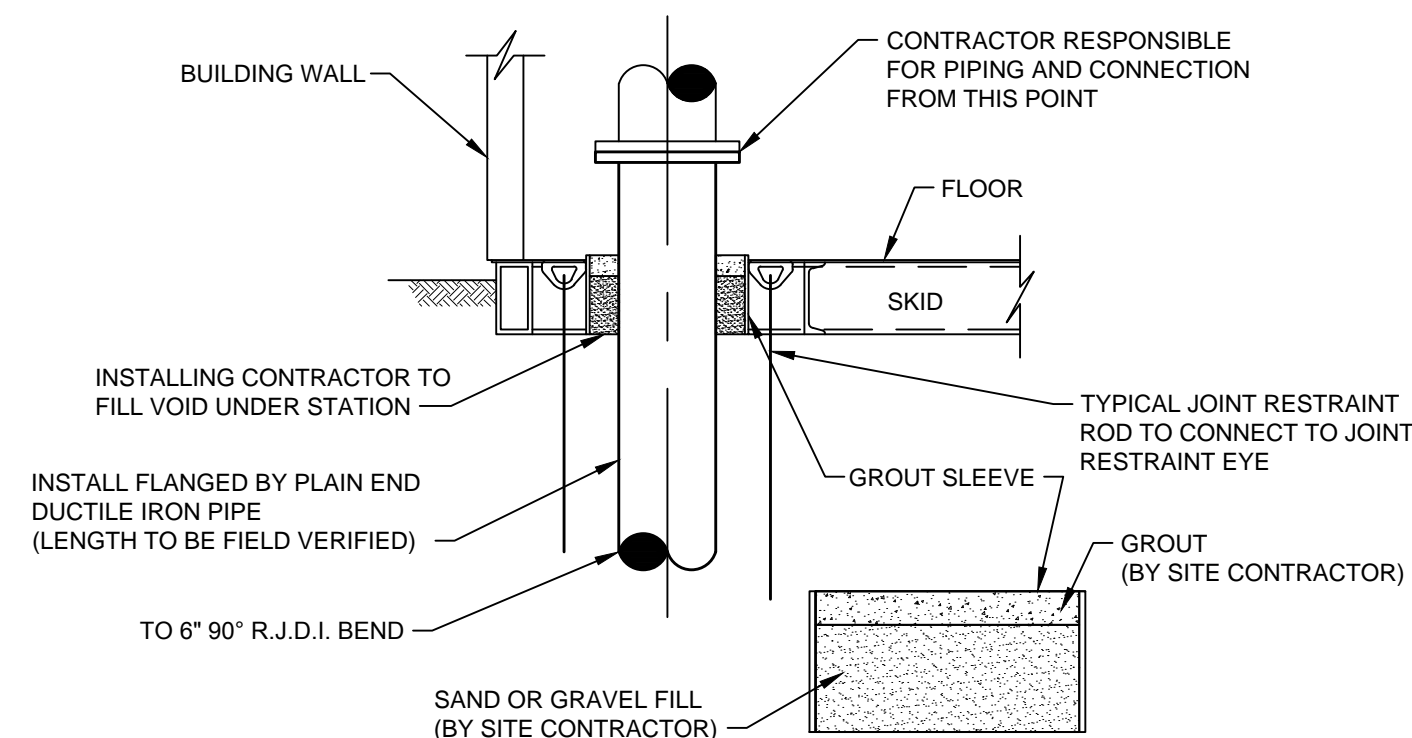
ISOMETRIC VIEW

NOT TO SCALE



TYPICAL PIPE SUPPORT - DETAIL

NOT TO SCALE



TYPICAL PIPE CONNECTION / GROUT DETAIL

NOT TO SCALE

LEGEND	
1	12" MAIN SUCTION
2	4" BUTTERFLY VALVE
3	4" RELIEF VALVE
4	RELIEF TO ATMOSPHERE
5	8" BUTTERFLY VALVE
6	8" CHECK VALVE
7	6" BUTTERFLY VALVE
8	6" ELASTOMER PIPE CONNECTOR
9	PUMP 400 GPM @ 127"
10	6" CHECK VALVE
11	6" METER
12	8" GATE VALVE
13	8" MAIN DISCHARGE (TO VERSAILLES)
14	2 1/2" BUTTERFLY VALVE
15	2 1/2" RELIEF VALVE
16	4" ELASTOMER PIPE CONNECTOR
17	PUMP 215 GPM @ 97"
18	4" CHECK VALVE
19	4" METER
20	6" BUTTERFLY VALVE
21	6" MAIN DISCHARGE (TO HOLTON)

THIS RECORD DOCUMENT HAS BEEN PREPARED BASED ON INFORMATION PROVIDED BY THE CONSTRUCTION CONTRACTOR. GRW ENGINEERS, INC. HAS ATTEMPTED TO VERIFY THE ACCURACY AND/OR COMPLETENESS OF THIS INFORMATION BUT SHALL NOT BE RESPONSIBLE FOR ANY ERRORS OR OMISSIONS WHICH MAY BE INCORPORATED HEREIN AS A RESULT.

**GRW**  
ENGINEERS - ARCHITECTS - PLANNERS  
www.grwinc.com

ENGINEER/ARCHITECT: CRAIG FARRELL

CONSTRUCTION COMPANY: ENGINEERED FLUID, INC.

DATE: 9/2014

U.S. 421 PUMP STATION ONE LINE DRAWING  
CONTRACT H-1 - U.S. 421 P.S. & TELEMETRY  
DIVISION H - WATERWORKS SYSTEM IMPROVEMENTS  
HOOSIER HILLS REGIONAL WATER DISTRICT  
RIPLEY COUNTY, INDIANA

DESIGNED		DRAWN		REVIEWED		APPROVED	
ALW		JEC		CJF		DRC	
NO.	DESCRIPTION	DATE	BY	DATE	BY	DATE	BY
1.	AS-BUILT REVISION	9/2014	JEC				

DATE: APRIL 2013  
SCALE: N.T.S.  
SHEET NO.

This document, originally issued, sealed, and signed by Daniel R. Cutshaw, Indiana Professional Engineer, No. 11200431, on April 19, 2013, shall not be used in lieu of a certified document.

GRW PROJECT NO. 3916-08  
CLIENT CONTRACT NO H-1  
ALL RIGHTS RESERVED. NO PART OF THIS DOCUMENT SHALL BE REPRODUCED IN WHOLE OR IN PART WITHOUT THE WRITTEN PERMISSION OF GRW ENGINEERS, INC.



U.S. 421 PUMP STATION ONE LINE DRAWING  
CONTRACT H-1 - U.S. 421 P.S. & TELEMETRY  
DIVISION H - WATERWORKS SYSTEM IMPROVEMENTS  
HOOSIER HILLS REGIONAL WATER DISTRICT  
RIPLEY COUNTY, INDIANA