

HOOSIER HILLS REGIONAL WATER DISTRICT DIVISION "G" WATERWORKS SYSTEM IMPROVEMENTS

CONTRACT G-6 - SPADES ROAD BPS WATER MAIN IMPROVEMENTS



HOOSIER HILLS REGIONAL WATER DISTRICT BOARD OF DIRECTORS

GREGORY DOLE	-	PRESIDENT
TED MEER	-	VICE PRESIDENT
CHARLES HYNES	-	SECRETARY
JOHN AMBERGER	-	TREASURER
ROY B. MEYER	-	ASST. TREASURER
RANDY SCUDDER	-	BOARD MEMBER
RUSSELL MORTARA	-	BOARD MEMBER
ANTHONY CLARK	-	BOARD MEMBER
DOUG NOBBE	-	BOARD MEMBER
SCOTT STIRN	-	GENERAL MANAGER

THIS RECORD DOCUMENT HAS BEEN PREPARED BASED ON INFORMATION PROVIDED BY THE CONSTRUCTION CONTRACTOR. GRW ENGINEERS, INC. HAS ATTEMPTED TO VERIFY THE ACCURACY AND/OR COMPLETENESS OF THIS INFORMATION BUT SHALL NOT BE RESPONSIBLE FOR ANY ERRORS OR OMISSIONS WHICH MAY BE INCORPORATED HEREIN AS A RESULT.

GRW
ENGINEERS - ARCHITECTS - PLANNERS
www.grwinc.com

ENGINEER/ARCHITECT: **DANIEL R. CUTSHAW**

CONSTRUCTION COMPANY: **MIKE HOLMAN EXCAVATING, INC.**

DATE: FEBRUARY 2014

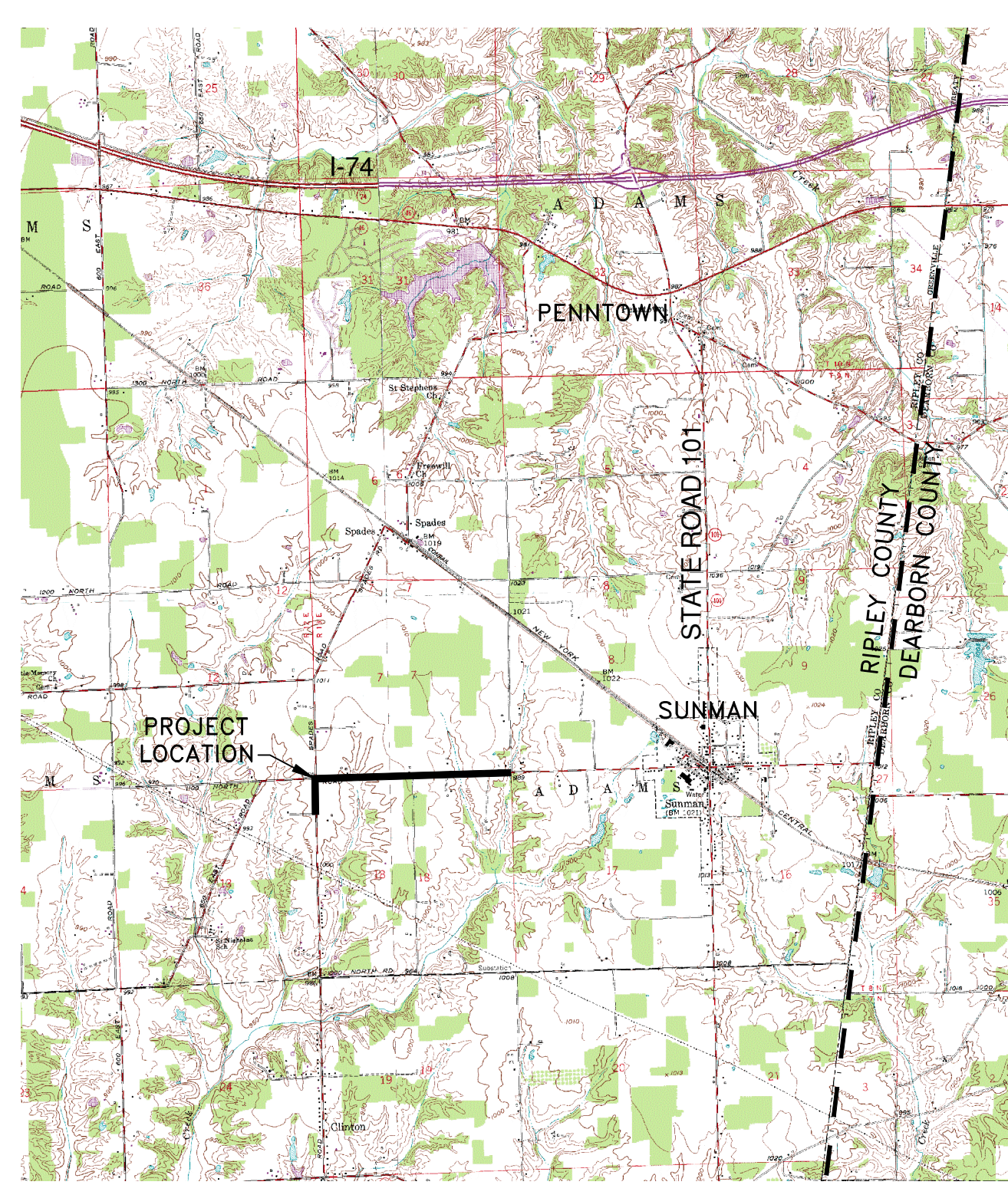
GRW

engineering | architecture | geospatial

This document, originally issued, sealed, and signed by Daniel R. Cutshaw, Indiana Professional Engineer, No. 11200431, on April 15, 2013, shall not be used in lieu of a certified document.

DANIEL R. CUTSHAW, P.E.
INDIANA REG. NO. 11200431

DATE: APRIL 15, 2013



SCALE: 1" = 4,000'

PLAN SET IS FULL SCALE ON 24"X36"
AND HALF SCALE ON 12"X18"

APRIL 2013

GRW PROJECT NO. 3235-08