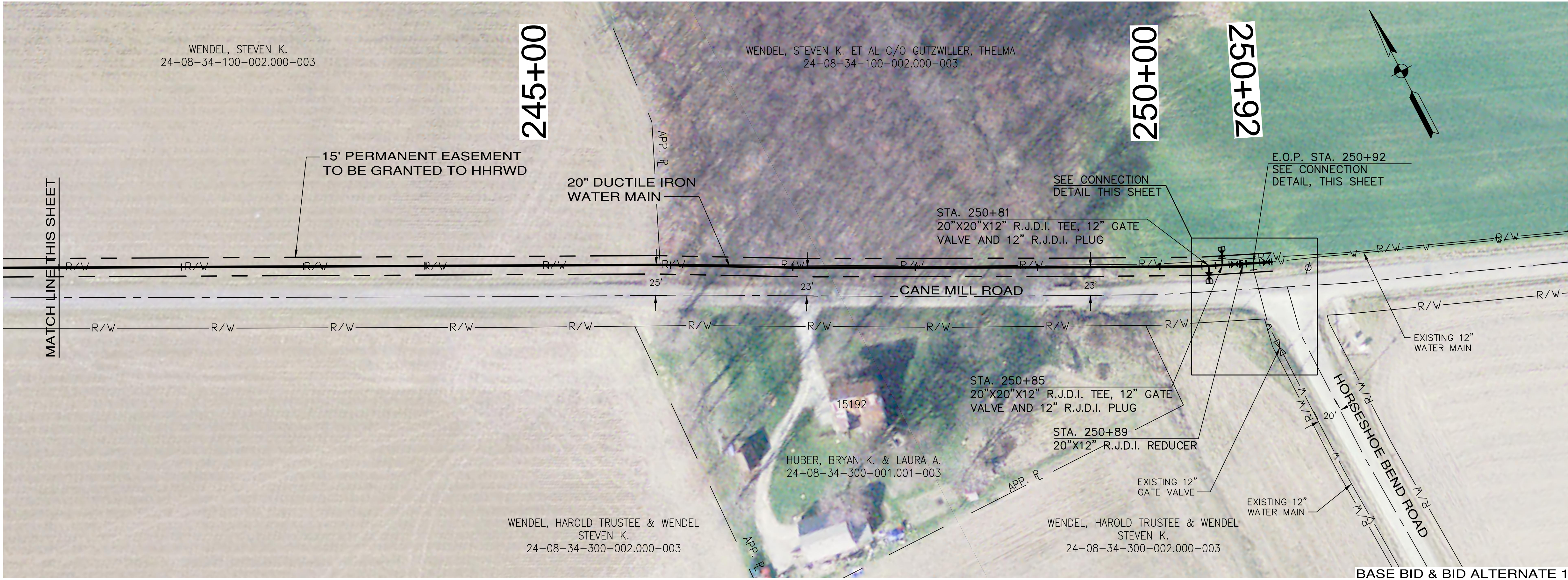
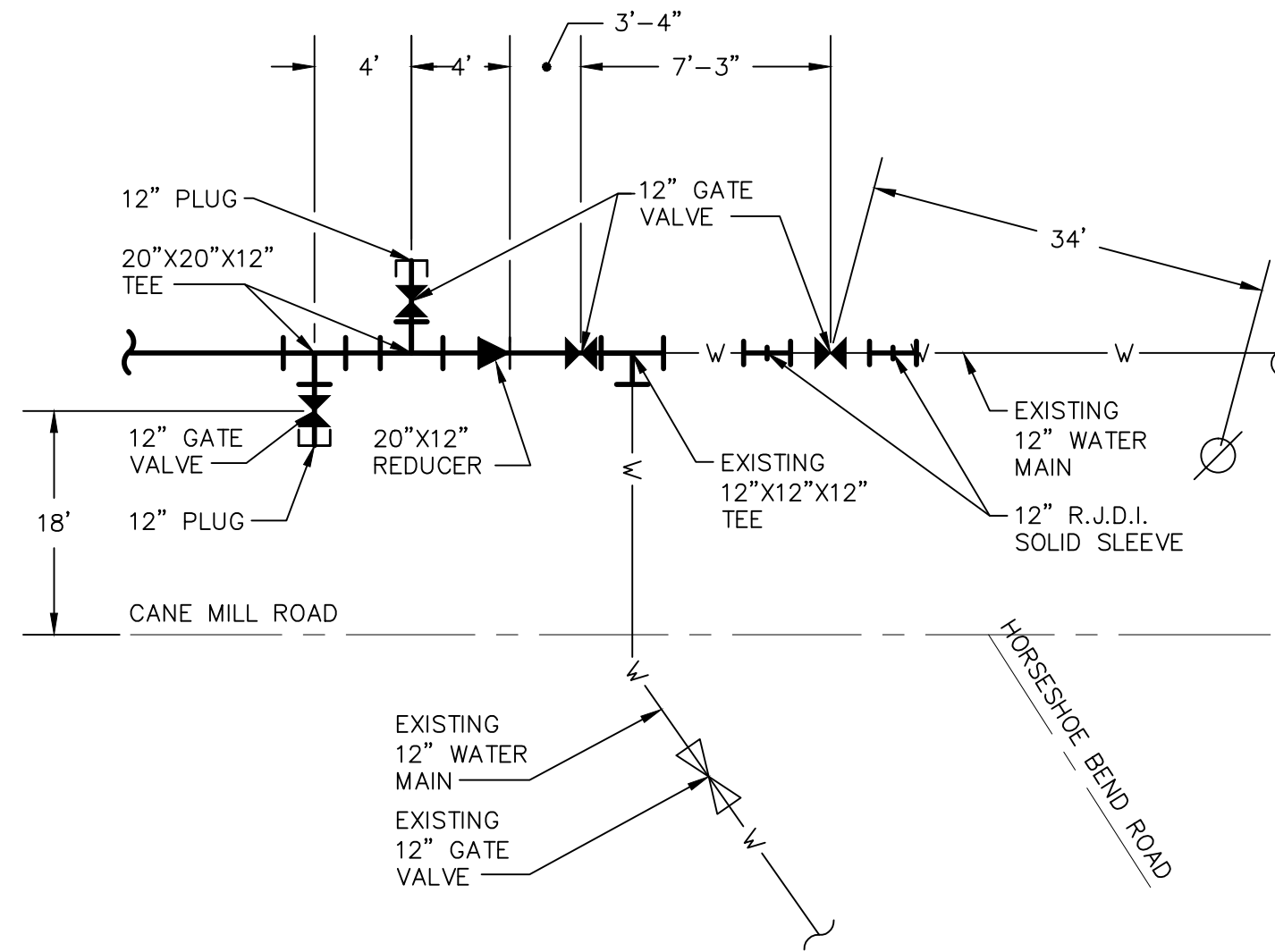
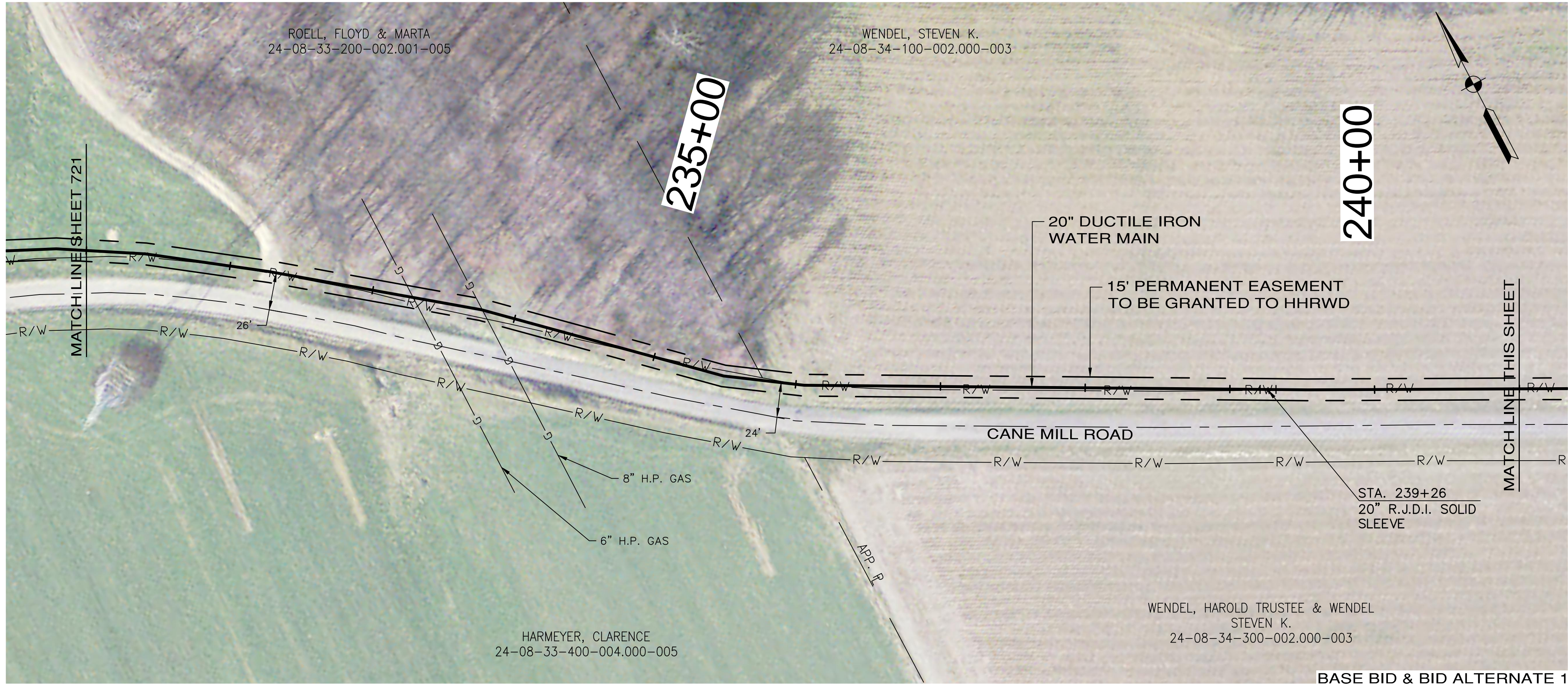


PRINTED: 3/3/2014 @ 10:10AM

FILE NAME: I:\3235 - HHRWD - Division G\Drawings\Design\G-4\3235_G4_SHT_721a.dwg



- NOTES:
- 1.) THE UTILITIES AND THEIR LOCATION SHOWN ON PLANS ARE APPROXIMATE. CONTRACTOR SHALL VERIFY ALL UTILITIES IN THE FIELD AND NOTIFY ALL UTILITY COMPANIES PRIOR TO INSTALLATION OF THE WATER LINE.
 - 2.) ALL PIPING SHALL BE CLASS 200 UNLESS OTHERWISE NOTED.
 - 3.) 48" MINIMUM COVER REQUIRED OVER TOP OF WATER LINE UNLESS OTHERWISE NOTED.

THIS RECORD DOCUMENT HAS BEEN PREPARED BASED ON INFORMATION PROVIDED BY THE CONSTRUCTION CONTRACTOR. GRW ENGINEERS, INC. HAS ATTEMPTED TO VERIFY THE ACCURACY AND/OR COMPLETENESS OF THIS INFORMATION BUT SHALL NOT BE RESPONSIBLE FOR ANY ERRORS OR OMISSIONS WHICH MAY BE INCORPORATED HEREIN AS A RESULT.

GRW
ENGINEERS - ARCHITECTS - PLANNERS
www.grwinc.com

ENGINEER/ARCHITECT: ALEX L. WHITE
CONSTRUCTION COMPANY: BRACKNEY, INC.
DATE: AUGUST 2013

CANE MILL ROAD CONTRACT G-4 WATER MAIN IMPROVEMENTS HOOSIER HILLS REGIONAL WATER DISTRICT DIVISION "G" SYSTEM IMPROVEMENTS		CLIENT CONTRACT NO. G-4		GRW PROJECT NO. 3235-04	
DRAWING SCALE CHECK:		THIS MARK SHOULD MEASURE EXACTLY 1" WHEN PLOTTED			
ALL RIGHTS RESERVED: THIS DOCUMENT IS THE PROPERTY OF GRW ENGINEERS, INC. AND SHALL NOT BE REPRODUCED IN WHOLE OR IN PART OR USED FOR CONSTRUCTION OF OTHER THAN THIS SPECIFIC PROJECT WITHOUT WRITTEN PERMISSION OF GRW ENGINEERS, INC.		This document, originally issued, sealed, and signed by Alex L. White, Indiana Professional Engineer, No. 11100292, on March 26, 2012, shall not be used in lieu of a certified document.		DESIGNED: CJF	DATE: AUGUST 2013
1. AS-BUILT ALONG CANE MILL ROAD		08-13	JEC	DRAWN: GCR	SCALE: 1"=50'
REVISIONS		DATE	BY	REVIEWED: DRC	SHEET NO.
				APPROVED: ALW	721A

GRW
Engineers, Architects, Planners
LEICESTON LOUISVILLE NASHVILLE INDIANAPOLIS
FORT MITCHELL KNOXVILLE ARLINGTON