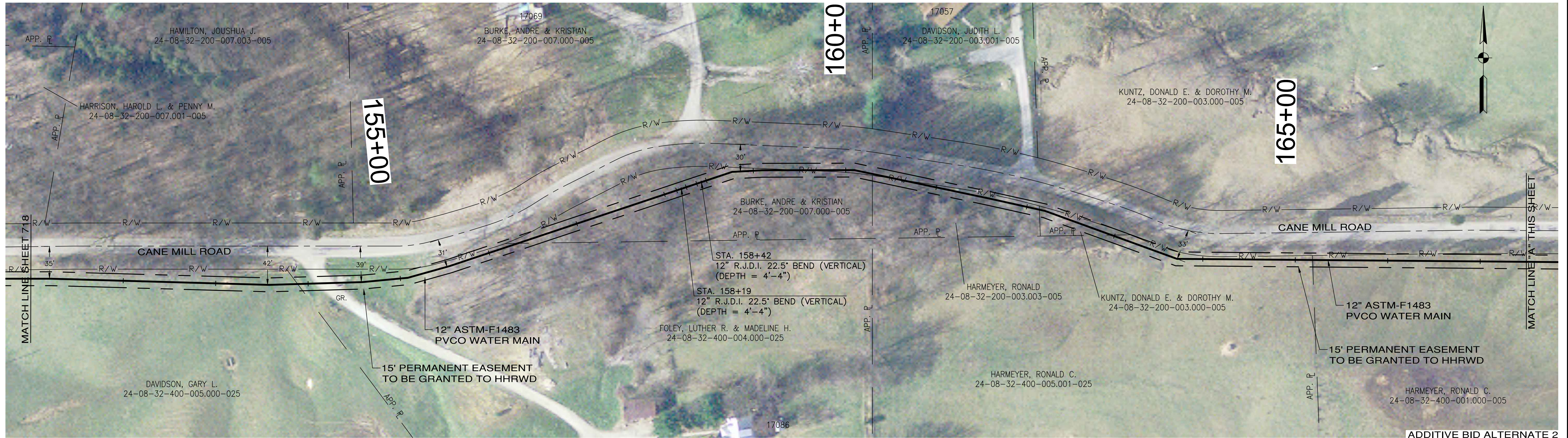
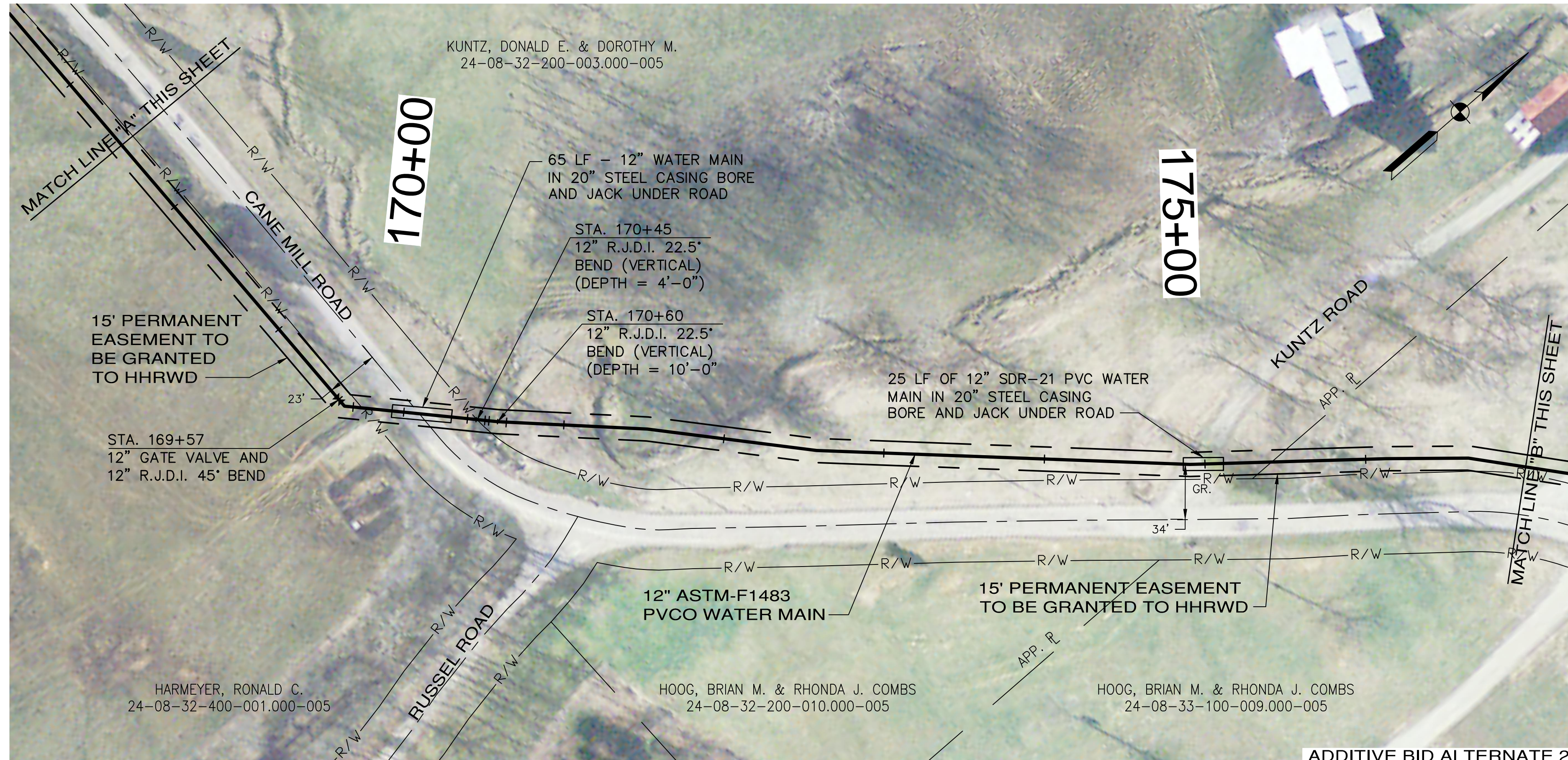


PRINTED: 2/26/2014 @ 1:23PM

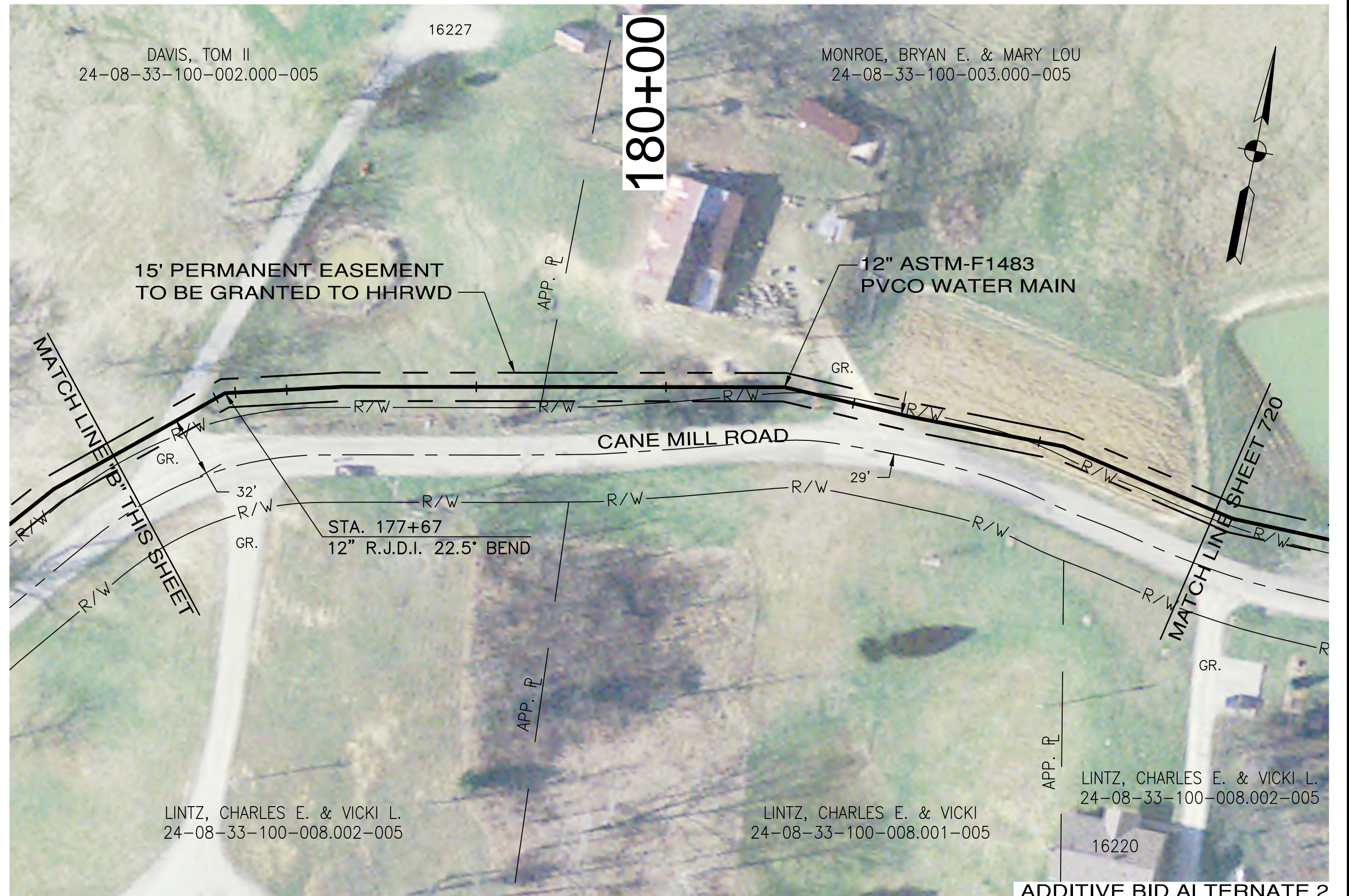
FILE NAME: I:\3235 - HHRWD - Division G\Draw\Design\G-4\3235_G4_SHT_719.dwg



ADDITIVE BID ALTERNATE 2



ADDITIVE BID ALTERNATE 2



ADDITIVE BID ALTERNATE 2

NOTES: 1.) THE UTILITIES AND THEIR LOCATION SHOWN ON PLANS ARE APPROXIMATE. CONTRACTOR SHALL VERIFY ALL UTILITIES IN THE FIELD AND NOTIFY ALL UTILITY COMPANIES PRIOR TO INSTALLATION OF THE WATER LINE.
2.) ALL PIPING SHALL BE CLASS 200 UNLESS OTHERWISE NOTED.
3.) 48" MINIMUM COVER REQUIRED OVER TOP OF WATER LINE UNLESS OTHERWISE NOTED.

THIS RECORD DOCUMENT HAS BEEN PREPARED BASED ON INFORMATION PROVIDED BY THE CONSTRUCTION CONTRACTOR. GRW ENGINEERS, INC. HAS ATTEMPTED TO VERIFY THE ACCURACY AND/OR COMPLETENESS OF THIS INFORMATION BUT SHALL NOT BE RESPONSIBLE FOR ANY ERRORS OR OMISSIONS WHICH MAY BE INCORPORATED HEREIN AS A RESULT.

GRW
ENGINEERS - ARCHITECTS - PLANNERS
www.grwinc.com

ENGINEER/ARCHITECT: ALEX L. WHITE
CONSTRUCTION COMPANY: BRACKNEY, INC.
DATE: AUGUST 2013

CANE MILL ROAD CONTRACT G-4 WATER MAIN IMPROVEMENTS HOOSIER HILLS REGIONAL WATER DISTRICT DIVISION "G" SYSTEM IMPROVEMENTS		CLIENT CONTRACT NO. G-4		GRW PROJECT NO. 3235-04									
DRAWING SCALE CHECK:		THIS MARK SHOULD MEASURE EXACTLY 1" WHEN PLOTTED											
ALL RIGHTS RESERVED: THIS DOCUMENT IS THE PROPERTY OF GRW ENGINEERS, INC. AND SHALL NOT BE REPRODUCED IN WHOLE OR IN PART OR USED FOR CONSTRUCTION OF OTHER THAN THIS SPECIFIC PROJECT WITHOUT WRITTEN PERMISSION OF GRW ENGINEERS, INC.		This document, originally issued, sealed, and signed by Alex L. White, Indiana Professional Engineer, No. 11100292, on March 26, 2012, shall not be used in lieu of a certified document.		DESIGNED: CJF DRAWN: GCR REVIEWED: DRC APPROVED: ALW	DATE: AUGUST 2013 SCALE: 1"=50' SHEET NO. 719								
 GRW Engineers, Inc. Engineers, Architects, Planners LEXINGTON LOUISVILLE NASHVILLE INDIANAPOLIS FORT MITCHELL KNOXVILLE ARLINGTON		<table><thead><tr><th>NO.</th><th>DESCRIPTION</th><th>DATE</th><th>BY</th></tr></thead><tbody><tr><td>1.</td><td>AS-BUILT ALONG CANE MILL ROAD</td><td>08-13</td><td>JEC</td></tr></tbody></table>		NO.	DESCRIPTION	DATE	BY	1.	AS-BUILT ALONG CANE MILL ROAD	08-13	JEC		
NO.	DESCRIPTION	DATE	BY										
1.	AS-BUILT ALONG CANE MILL ROAD	08-13	JEC										