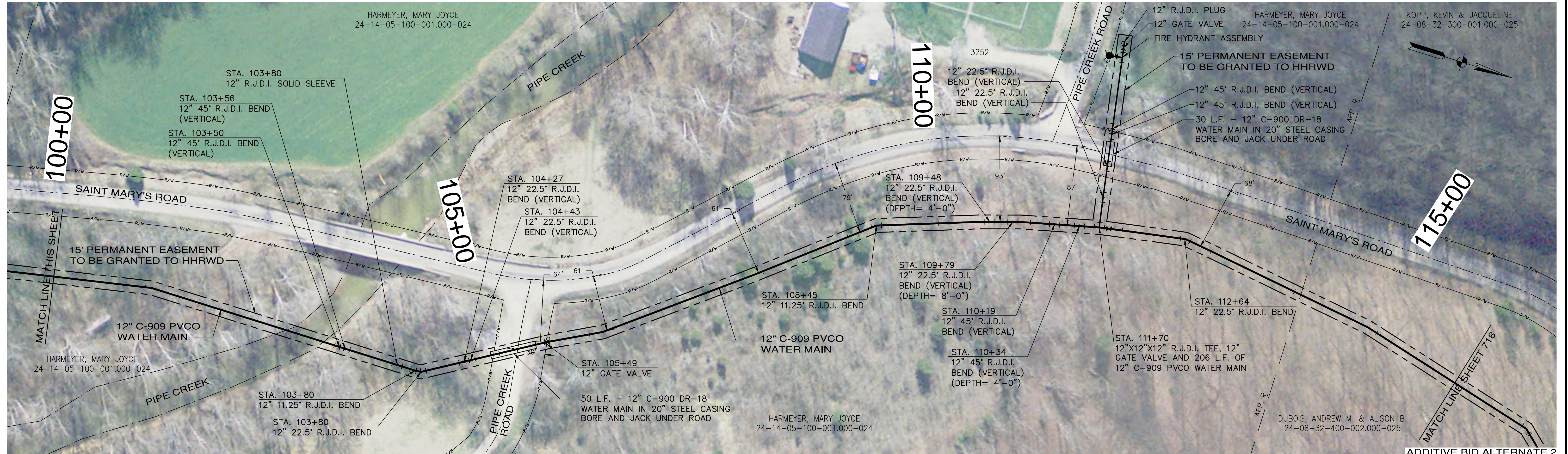
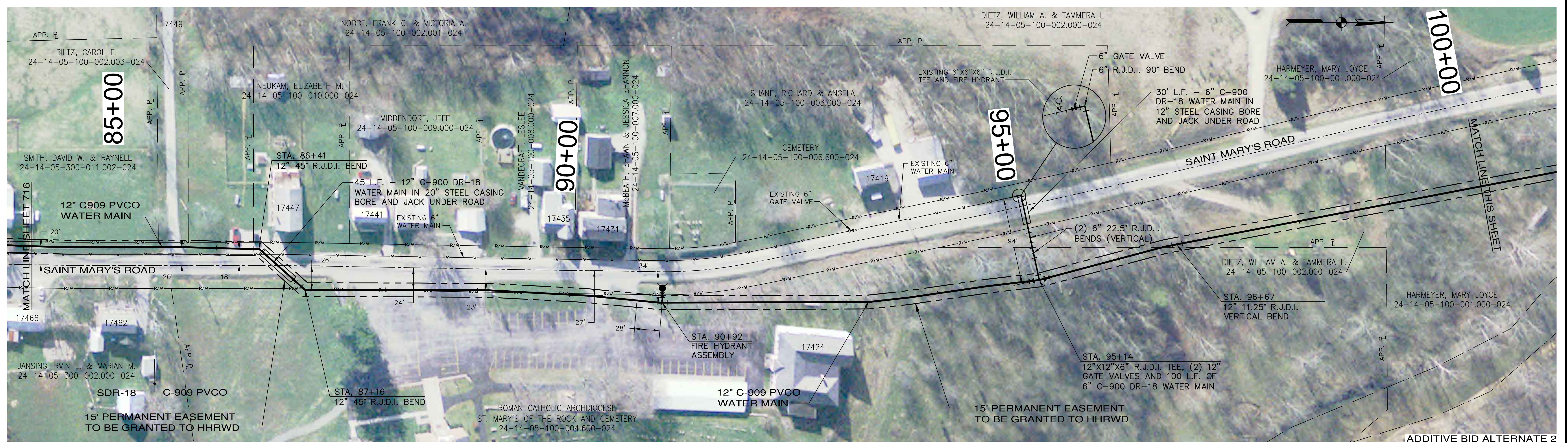


PRINTED: 2/26/2014 @ 1:23PM

FILE NAME: I:\3235 - HHRWD - Division G\Drawings\Design\G-4\3235\_G4\_SHT\_717.dwg



NOTES: 1.) THE UTILITIES AND THEIR LOCATION SHOWN ON PLANS ARE APPROXIMATE. CONTRACTOR SHALL VERIFY ALL UTILITIES IN THE FIELD AND NOTIFY ALL UTILITY COMPANIES PRIOR TO INSTALLATION OF THE WATER LINE.  
2.) ALL PIPING SHALL BE CLASS 200 UNLESS OTHERWISE NOTED.  
3.) 48" MINIMUM COVER REQUIRED OVER TOP OF WATER LINE UNLESS OTHERWISE NOTED.

THIS RECORD DOCUMENT HAS BEEN PREPARED BASED ON INFORMATION PROVIDED BY THE CONSTRUCTION CONTRACTOR. GRW ENGINEERS, INC. HAS ATTEMPTED TO VERIFY THE ACCURACY AND/OR COMPLETENESS OF THIS INFORMATION BUT SHALL NOT BE RESPONSIBLE FOR ANY ERRORS OR OMISSIONS WHICH MAY BE INCORPORATED HEREIN AS A RESULT.

**GRW**  
ENGINEERS - ARCHITECTS - PLANNERS  
www.grwinc.com  
ENGINEER/ARCHITECT: ALEX L. WHITE  
CONSTRUCTION COMPANY: BRACKNEY, INC.  
DATE: AUGUST 2013

<b>SAINT MARY'S ROAD CONTRACT G-4 WATER MAIN IMPROVEMENTS HOOSIER HILLS REGIONAL WATER DISTRICT DIVISION "G" SYSTEM IMPROVEMENTS</b>		CLIENT CONTRACT NO. G-4		GRW PROJECT NO. 3235-04																	
DRAWING SCALE CHECK:		THIS MARK SHOULD MEASURE EXACTLY 1" WHEN PLOTTED		ALL RIGHTS RESERVED: THIS DOCUMENT IS THE PROPERTY OF GRW ENGINEERS, INC. AND SHALL NOT BE REPRODUCED IN WHOLE OR IN PART OR USED FOR CONSTRUCTION OF OTHER THAN THIS SPECIFIC PROJECT WITHOUT WRITTEN PERMISSION OF GRW ENGINEERS, INC.																	
 <b>GRW Engineers, Inc.</b> Engineers, Architects, Planners LEXINGTON LOUISVILLE NASHVILLE INDIANAPOLIS FORT MITCHELL KNOXVILLE ARLINGTON		<table><tr><td>DESIGNED:</td><td>CJF</td><td>DATE:</td><td>AUGUST 2013</td></tr><tr><td>DRAWN:</td><td>GCR</td><td>SCALE:</td><td>1"=50'</td></tr><tr><td>REVIEWED:</td><td>DRC</td><td>SHEET NO.:</td><td>717</td></tr><tr><td>APPROVED:</td><td>ALW</td><td></td><td></td></tr></table>		DESIGNED:	CJF	DATE:	AUGUST 2013	DRAWN:	GCR	SCALE:	1"=50'	REVIEWED:	DRC	SHEET NO.:	717	APPROVED:	ALW			This document, originally issued, sealed, and signed by Alex L. White, Indiana Professional Engineer, No. 11100292, on March 26, 2012, shall not be used in lieu of a certified document.	
DESIGNED:	CJF	DATE:	AUGUST 2013																		
DRAWN:	GCR	SCALE:	1"=50'																		
REVIEWED:	DRC	SHEET NO.:	717																		
APPROVED:	ALW																				
<table><tr><th>NO.</th><th>DESCRIPTION</th><th>DATE</th><th>BY</th></tr><tr><td>1.</td><td>AS-BUILTS</td><td>08-13</td><td>JEC</td></tr></table>		NO.	DESCRIPTION	DATE	BY	1.	AS-BUILTS	08-13	JEC												
NO.	DESCRIPTION	DATE	BY																		
1.	AS-BUILTS	08-13	JEC																		