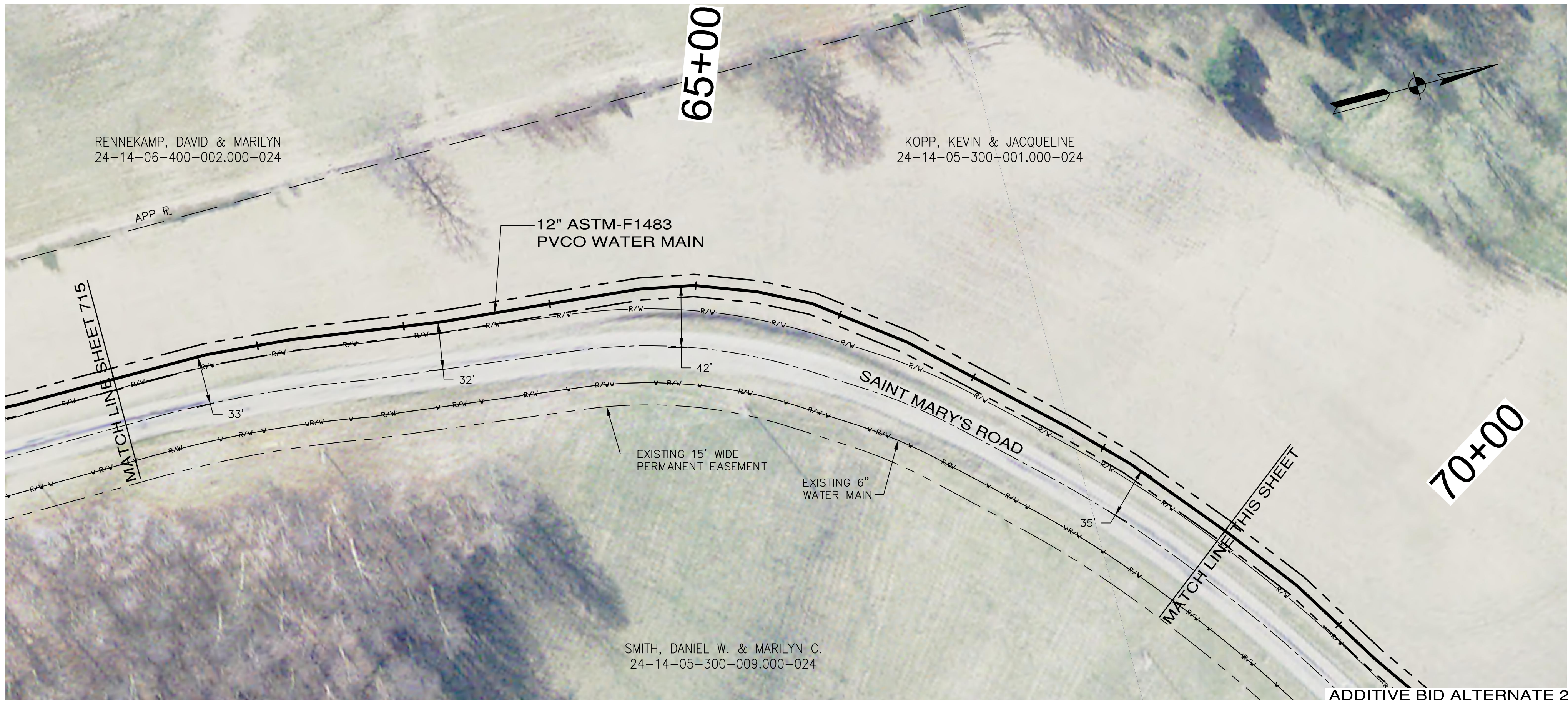
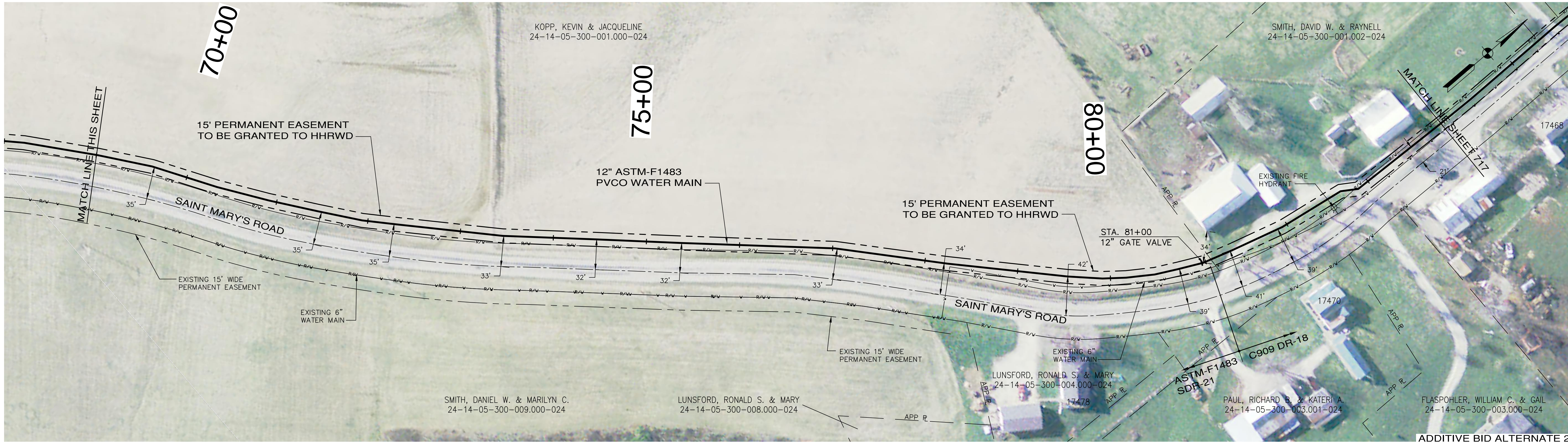


PRINTED: 2/26/2014 @ 1:23PM

FILE NAME: I:\3235 - HHRWD - Division G\Draw Design\G-4\3235_G4_SHT_716.dwg



ADDITIVE BID ALTERNATE 2



ADDITIVE BID ALTERNATE 2

- NOTES:
- 1.) THE UTILITIES AND THEIR LOCATION SHOWN ON PLANS ARE APPROXIMATE. CONTRACTOR SHALL VERIFY ALL UTILITIES IN THE FIELD AND NOTIFY ALL UTILITY COMPANIES PRIOR TO INSTALLATION OF THE WATER LINE.
 - 2.) ALL PIPING SHALL BE CLASS 200 UNLESS OTHERWISE NOTED.
 - 3.) 48" MINIMUM COVER REQUIRED OVER TOP OF WATER LINE UNLESS OTHERWISE NOTED.

THIS RECORD DOCUMENT HAS BEEN PREPARED BASED ON INFORMATION PROVIDED BY THE CONSTRUCTION CONTRACTOR. GRW ENGINEERS, INC. HAS ATTEMPTED TO VERIFY THE ACCURACY AND/OR COMPLETENESS OF THIS INFORMATION BUT SHALL NOT BE RESPONSIBLE FOR ANY ERRORS OR OMISSIONS WHICH MAY BE INCORPORATED HEREIN AS A RESULT.

GRW
ENGINEERS - ARCHITECTS - PLANNERS
www.grwinc.com

ENGINEER/ARCHITECT: ALEX L. WHITE
CONSTRUCTION COMPANY: BRACKNEY, INC.
DATE: AUGUST 2013

SAINT MARY'S ROAD CONTRACT G-4 WATER MAIN IMPROVEMENTS HOOSIER HILLS REGIONAL WATER DISTRICT DIVISION "G" SYSTEM IMPROVEMENTS		CLIENT CONTRACT NO. G-4		GRW PROJECT NO. 3235-04	
DRAWING SCALE CHECK:		THIS MARK SHOULD MEASURE EXACTLY 1" WHEN PLOTTED			
ALL RIGHTS RESERVED: THIS DOCUMENT IS THE PROPERTY OF GRW ENGINEERS, INC. AND SHALL NOT BE REPRODUCED IN WHOLE OR IN PART OR USED FOR CONSTRUCTION OF OTHER THAN THIS SPECIFIC PROJECT WITHOUT WRITTEN PERMISSION OF GRW ENGINEERS, INC.					
 GRW Engineers, Inc. Engineers, Architects, Planners LEXINGTON LOUISVILLE NASHVILLE INDIANAPOLIS FORT MITCHELL KNOXVILLE ARLINGTON		1. AS-BUILTS		08-13	JEC
		NO. DESCRIPTION		DATE	BY
REVISIONS		This document, originally issued, sealed, and signed by Alex L. White, Indiana Professional Engineer, No. 11100292, on March 26, 2012, shall not be used in lieu of a certified document.		DESIGNED: CJF DATE: AUGUST 2013 DRAWN: GCR SCALE: 1"=50' REVIEWED: DRC SHEET NO. 716 APPROVED: ALW	