

PLUGS								
SIZE	4"	6"	8"	12"	16"	18"	20"	24"
D	16"	18"	18"	24"	24"	30"	30"	30"
L	16"	18"	22"	30"	48"	48"	48"	48"
T	10"	12"	12"	12"	12"	18"	24"	24"
W	16"	18"	22"	24"	30"	30"	48"	48"

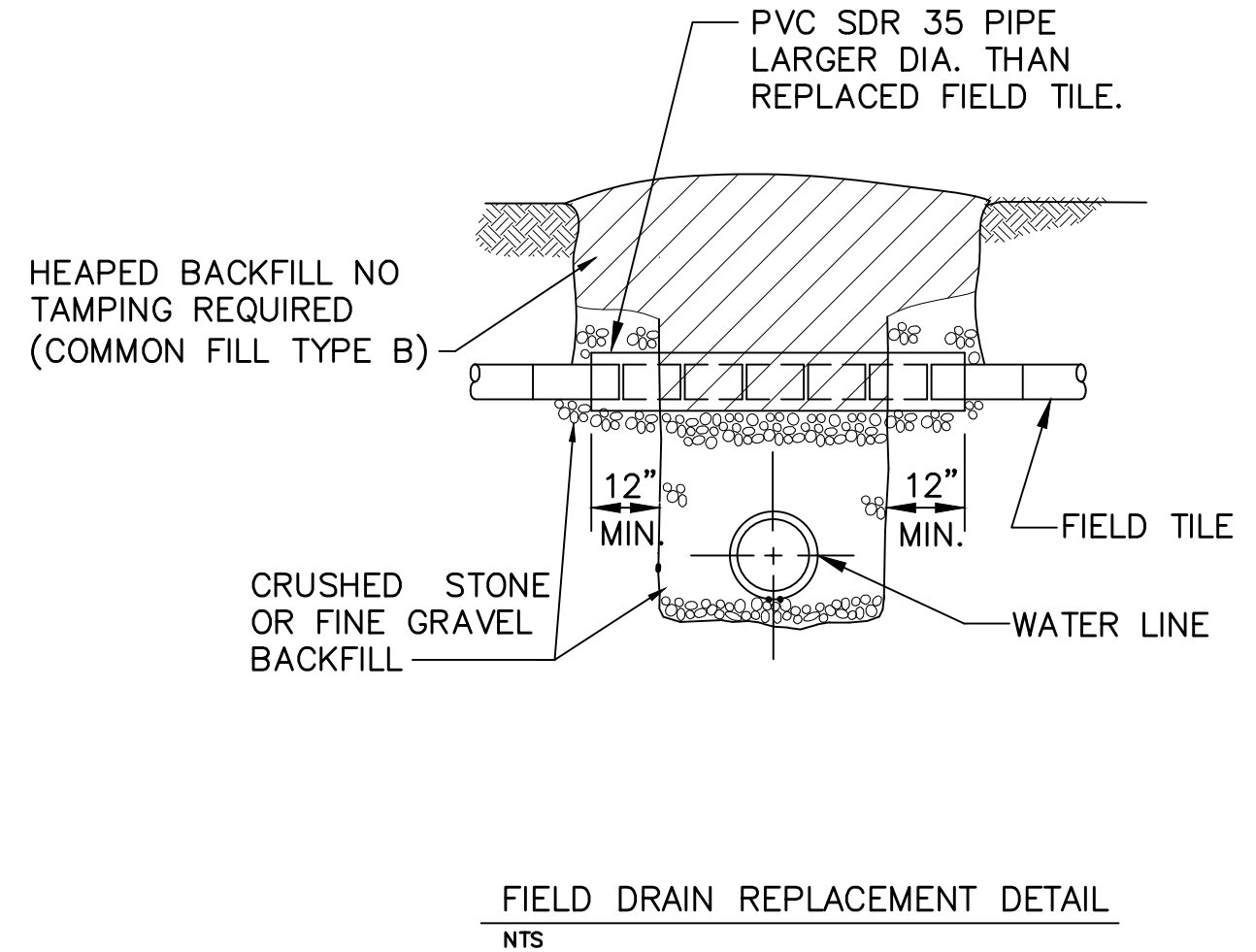
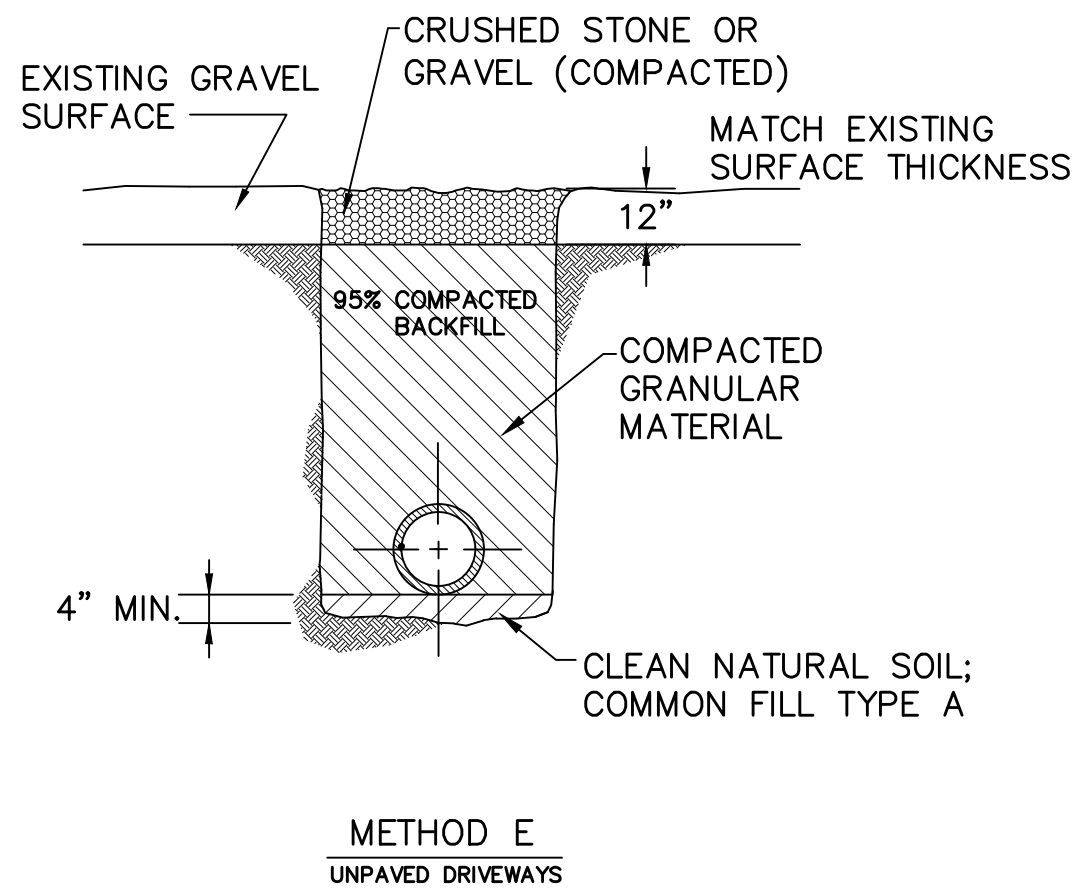
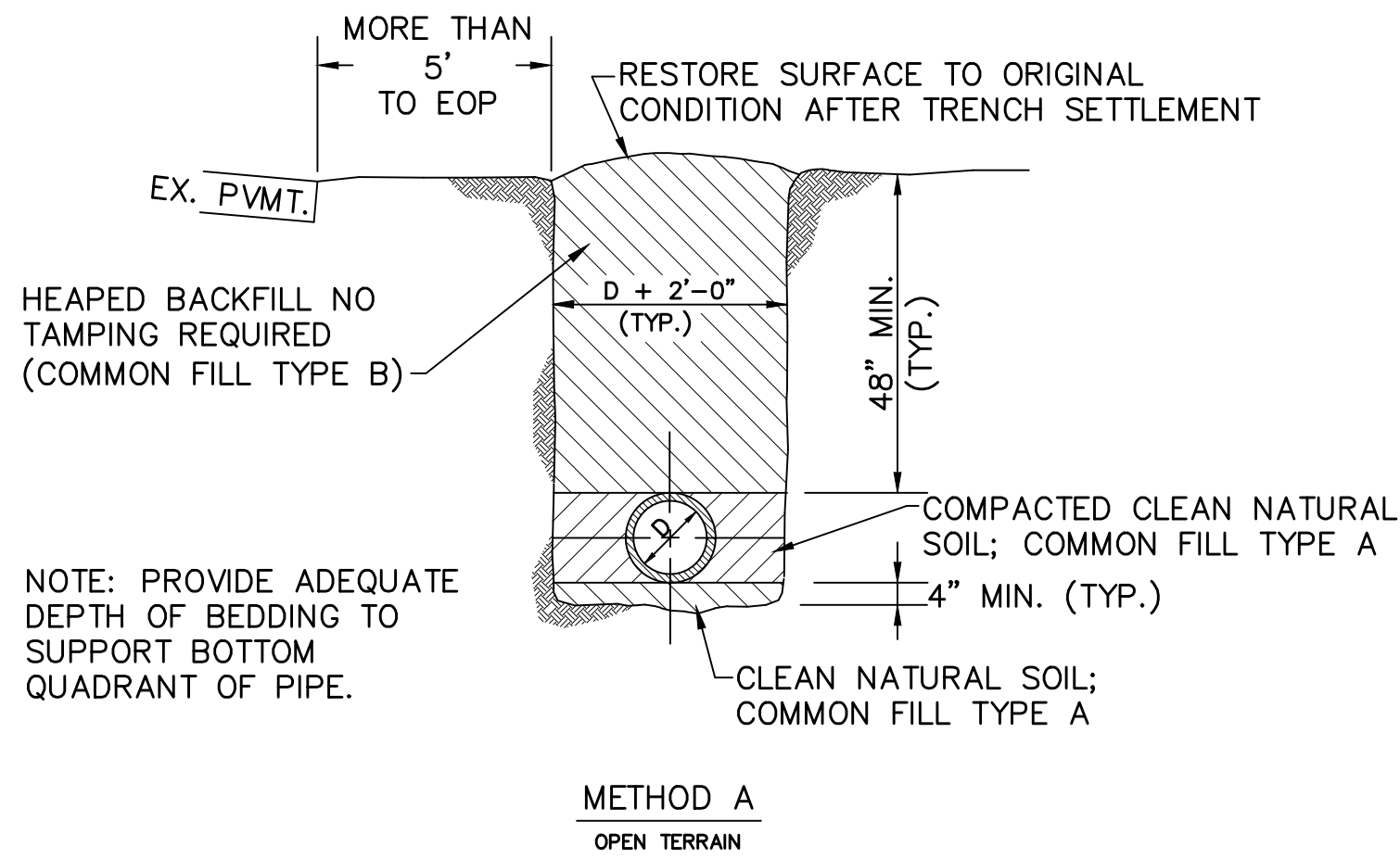
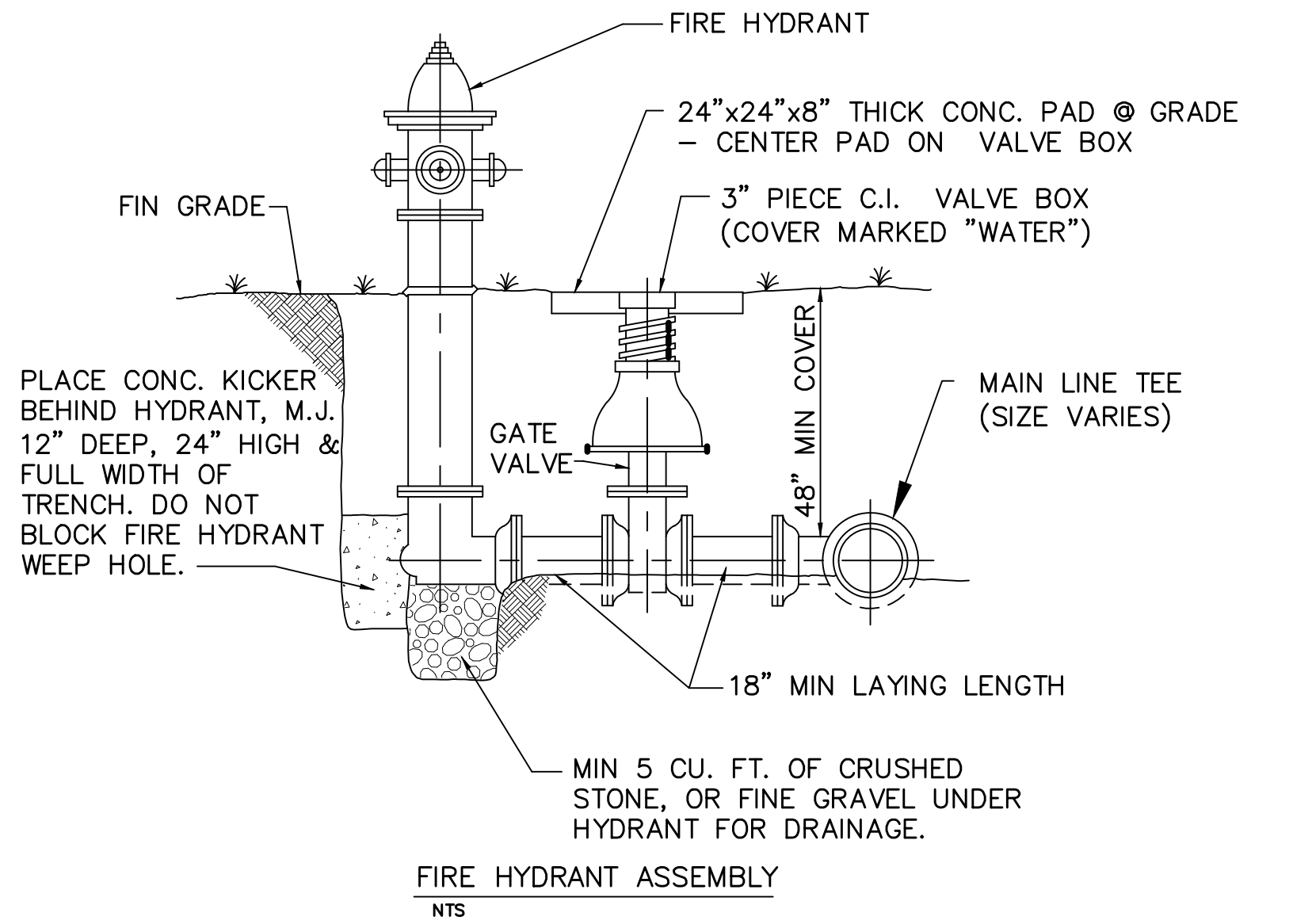
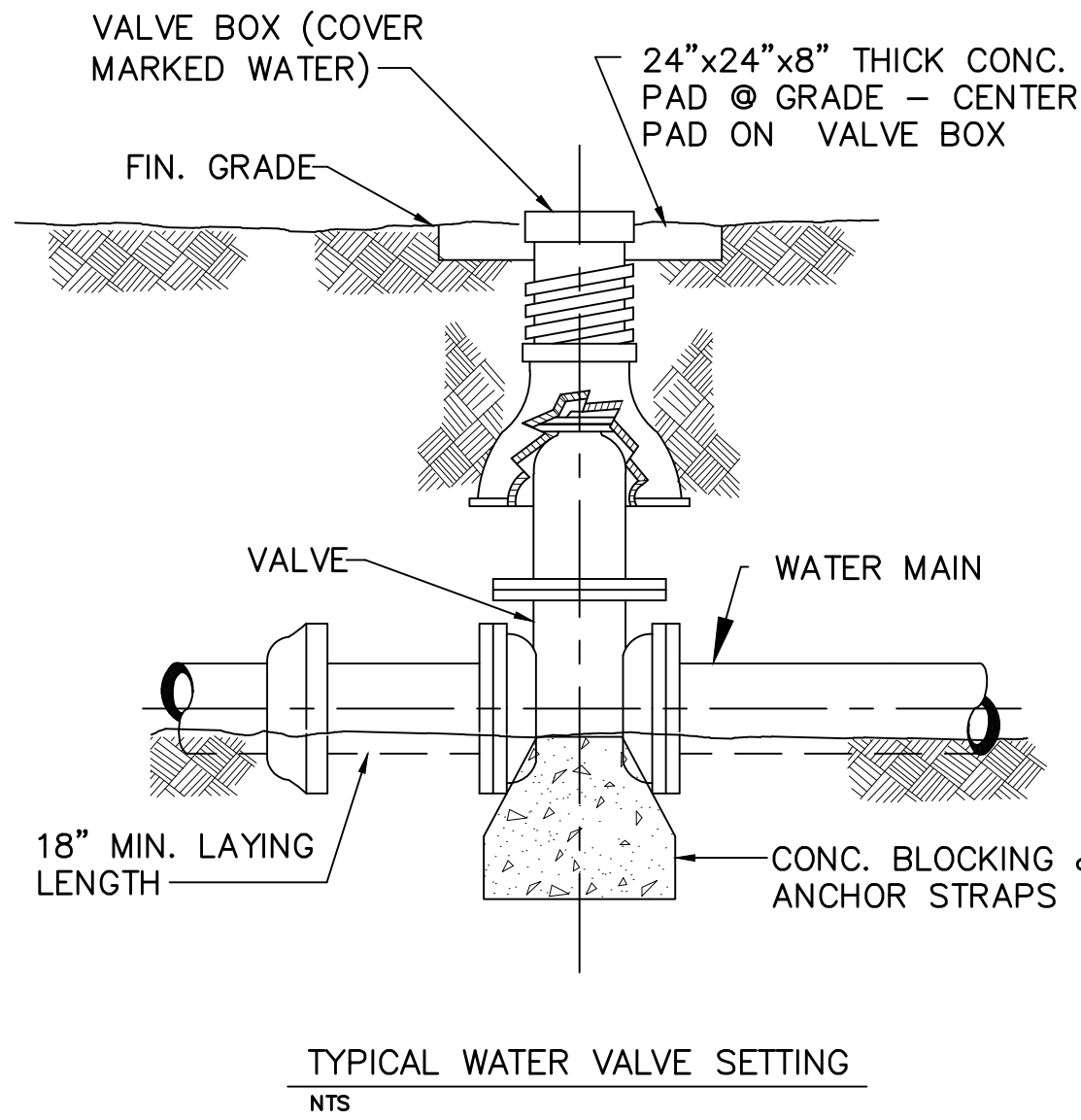
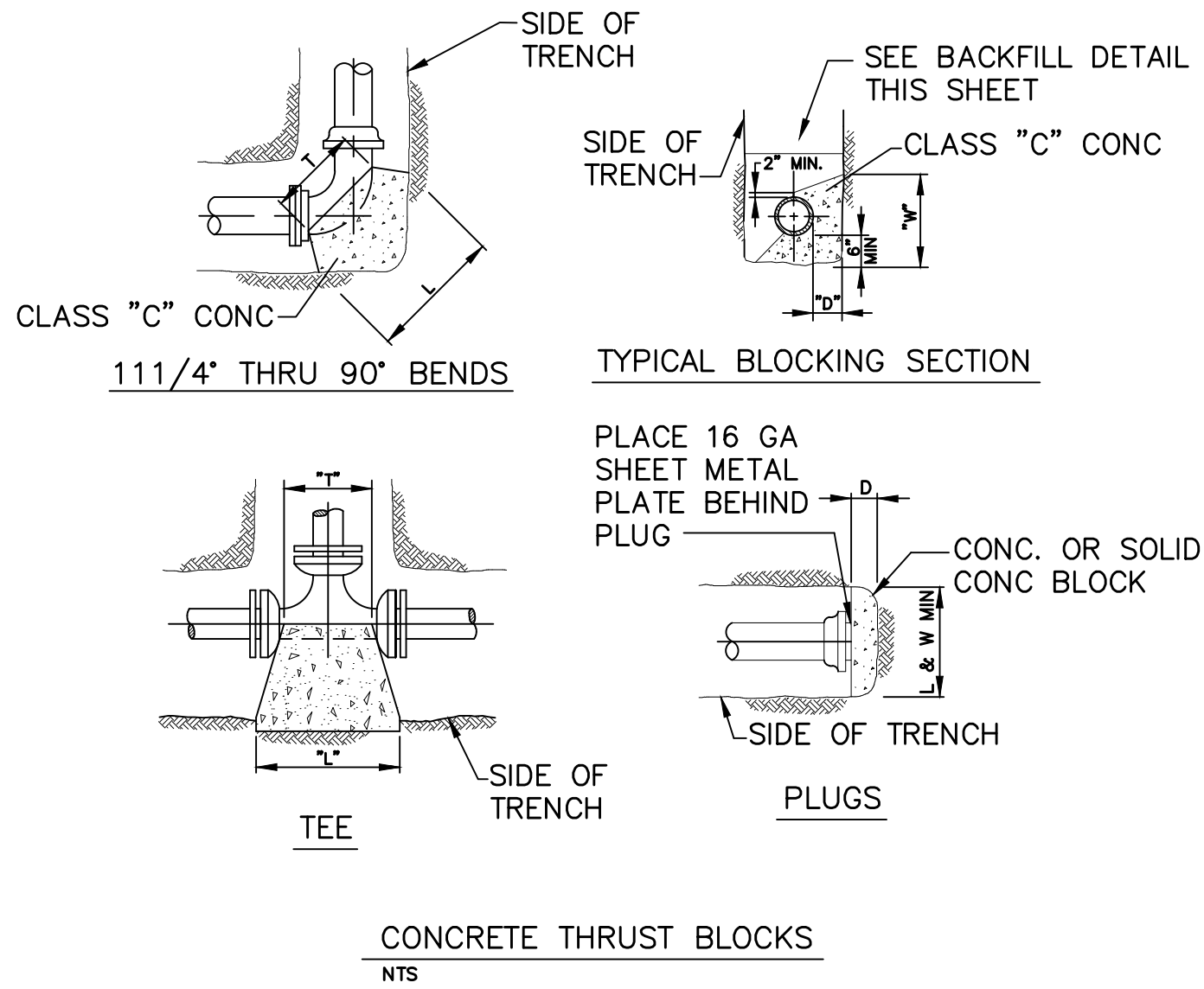
11 1/4", 22 1/2" & 45° BENDS								
SIZE	4"	6"	8"	12"	16"	18"	20"	24"
D	6"	6"	6"	6"	6"	8"	16"	16"
L	12"	14"	16"	20"	34"	40"	45"	52"
T	12"	14"	14"	16"	28"	33"	37"	46"
W	10"	12"	14"	18"	22"	25"	28"	32"

90° BENDS								
SIZE	4"	6"	8"	12"	16"	18"	20"	24"
D	8"	8"	10"	12"	12"	16"	20"	20"
L	20"	24"	27"	34"	48"	51"	54"	70"
T	10"	16"	18"	22"	36"	40"	44"	50"
W	12"	12"	16"	24"	28"	34"	40"	44"

TEES								
SIZE	4"	6"	8"	12"	16"	18"	20"	24"
D	8"	8"	12"	12"	12"	16"	38"	38"
L	10"	18"	24"	27"	28"	30"	48"	48"
W	16"	12"	18"	24"	28"	34"	48"	48"
T	12"	12"	15"	18"	20"	22"	24"	24"

VERTICAL BEND & STRAIGHT PIPE								
SIZE	4"	6"	8"	12"	16"	18"	20"	24"
D	12"	15"	15"	18"	21"	21"	24"	24"
L	18"	24"	24"	30"	36"	36"	36"	42"

NOTES:
1. DEPTH "D" MAY BE GREATER THAN SPECIFIED TO ALLOW WORKING SPACE. BLOCKING MUST BE PLACED AGAINST UNDISTURBED EARTH.




THIS RECORD DOCUMENT HAS BEEN PREPARED BASED ON INFORMATION PROVIDED BY THE CONSTRUCTION CONTRACTOR. GRW ENGINEERS, INC. HAS ATTEMPTED TO VERIFY THE ACCURACY AND/OR COMPLETENESS OF THIS INFORMATION BUT SHALL NOT BE RESPONSIBLE FOR ANY ERRORS OR OMISSIONS WHICH MAY BE INCORPORATED HEREIN AS A RESULT.

GRW
engineering | architecture | geospatial

ENGINEER/ARCHITECT: ALEX L. WHITE

CONSTRUCTION COMPANY: ENGINEERED FLUID, INC.

DATE: FEBRUARY 2014

STANDARD DETAILS				CLIENT CONTRACT NO. G-3				GRW PROJECT NO. 3235			
HOOSIER HILLS REGIONAL WATER DISTRICT DIV. G-3 - P.S. & TELEMETRY IMPROVEMENTS				DRAWING SCALE CHECK: <div><div></div></div> THIS MARK SHOULD MEASURE EXACTLY 1" WHEN PLOTTED							
				ALL RIGHTS RESERVED: THIS DOCUMENT IS THE PROPERTY OF GRW, INC. AND SHALL NOT BE REPRODUCED IN WHOLE OR IN PART OR USED FOR CONSTRUCTION OF OTHER THAN THIS SPECIFIC PROJECT WITHOUT WRITTEN PERMISSION OF GRW, INC.							
 engineering architecture geospatial www.grwinc.com						This document, originally issued, sealed, and signed by Alex L. White, Indiana Professional Engineer, No. 11100292, on March 26, 2012, shall not be used in lieu of a certified document.	DESIGNED: ALW	DATE: MARCH 2012			
							DRAWN: GCR	SCALE: N.T.S.			
		1	AS-BUILTS		2/14		CJF	REVIEWED: DRC	SHEET NO.		
		NO.	DESCRIPTION		DATE		BY	APPROVED: ALW	WD-1		
		REVISIONS									