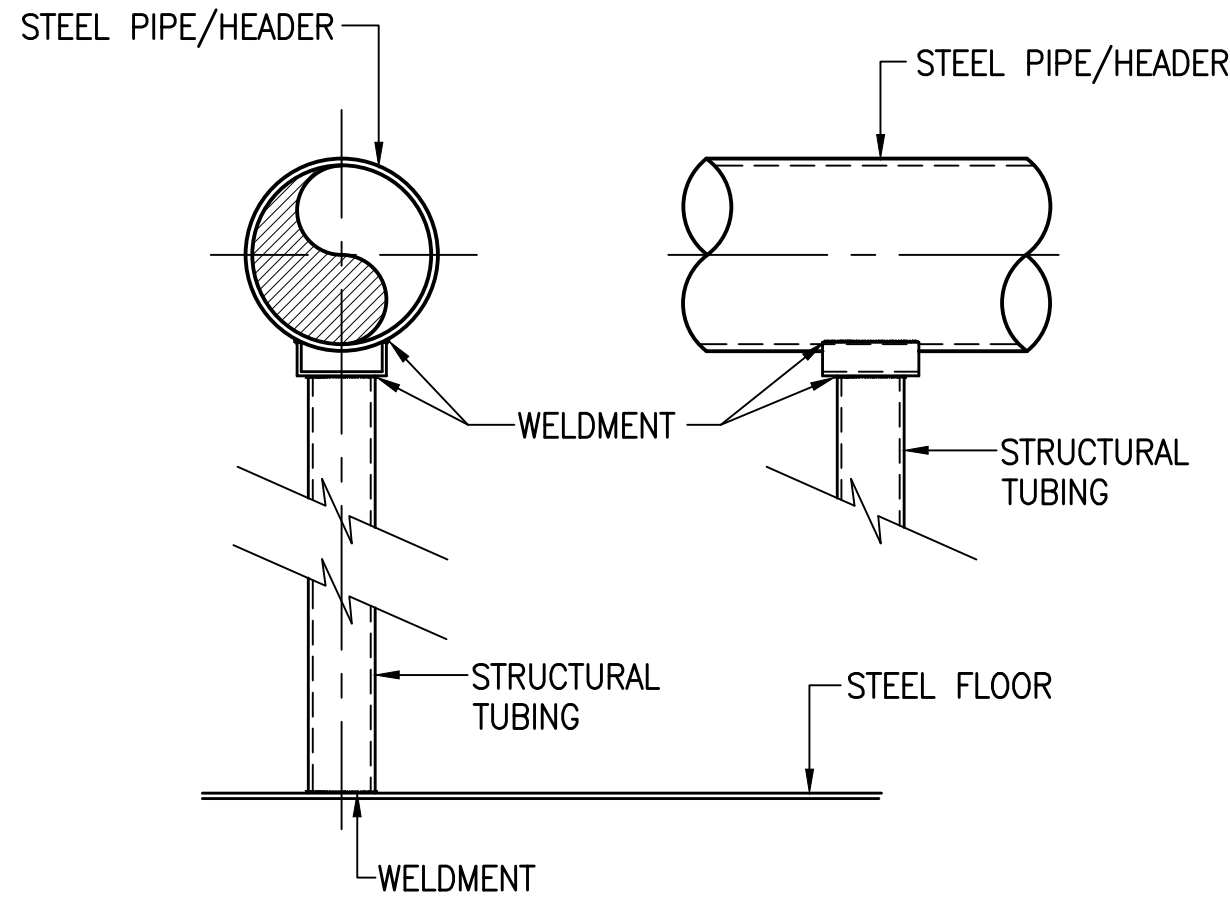
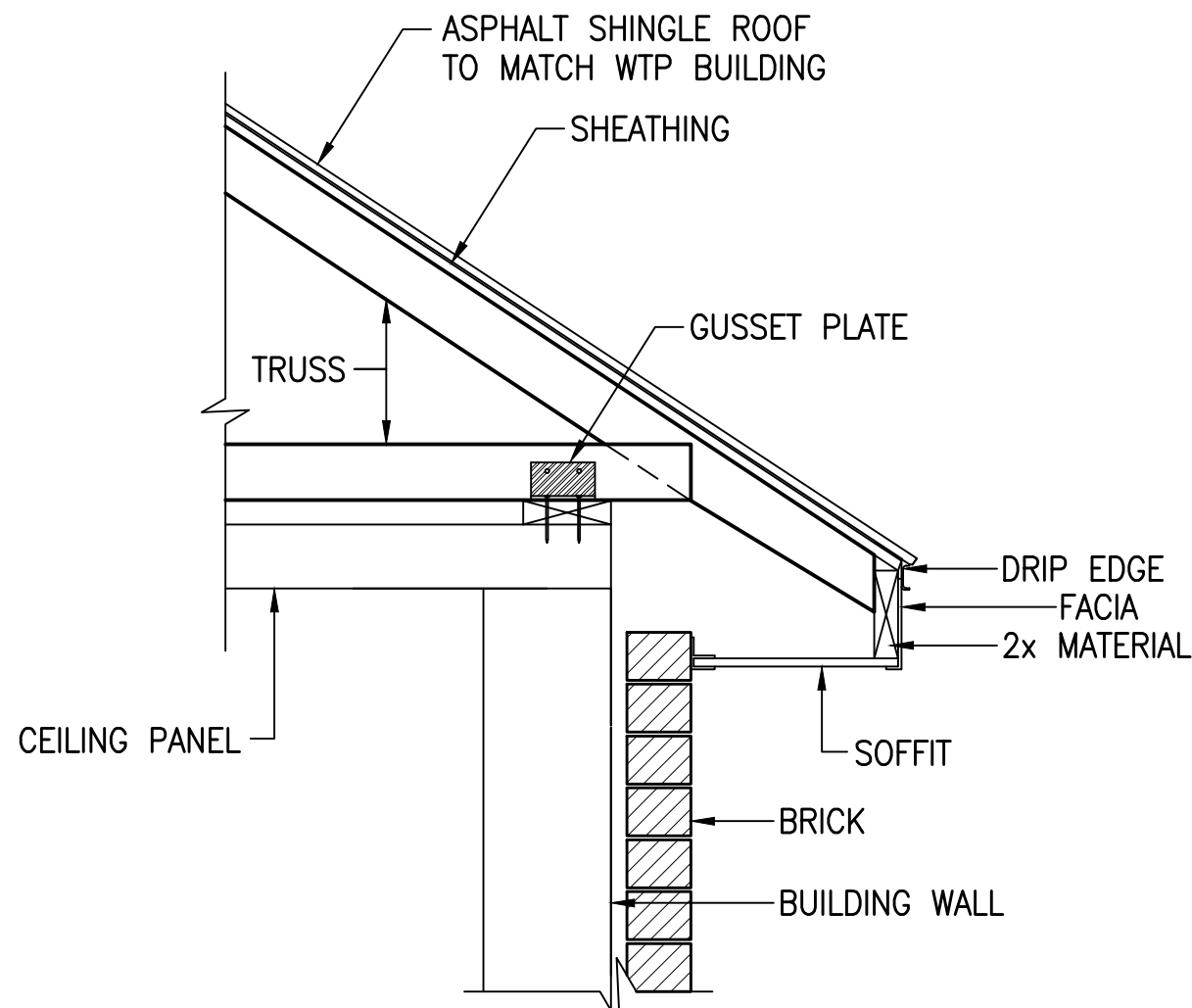


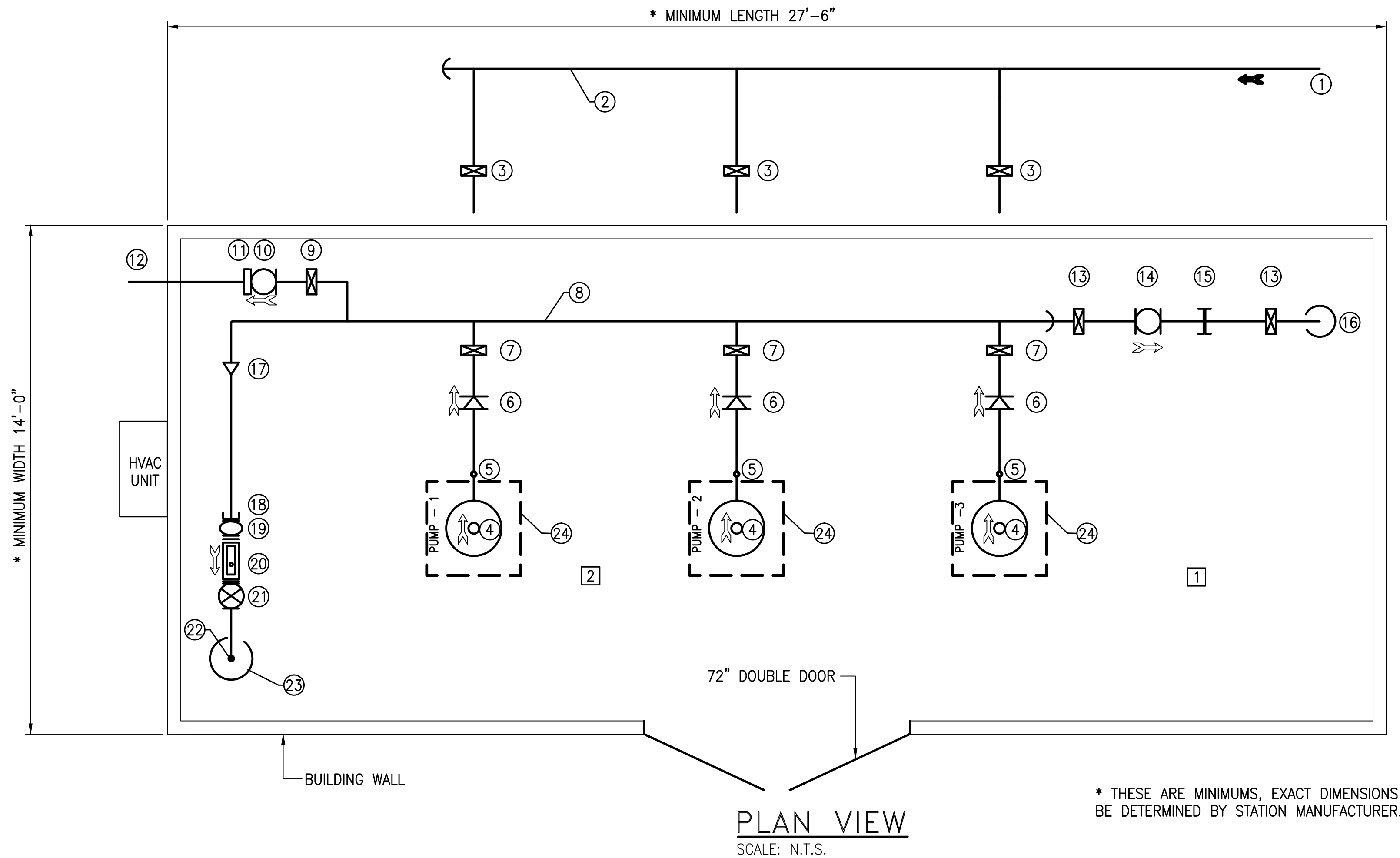
FILE NAME: I:\3235 - IHRWD - Division G\Drawn\Design\G-3\Land\Draw\3235-G3-C-05.dwg
PRINTED: 2/25/2014 @ 9:25AM



TYPICAL PIPE SUPPORT - DETAIL
SCALE: N.T.S.

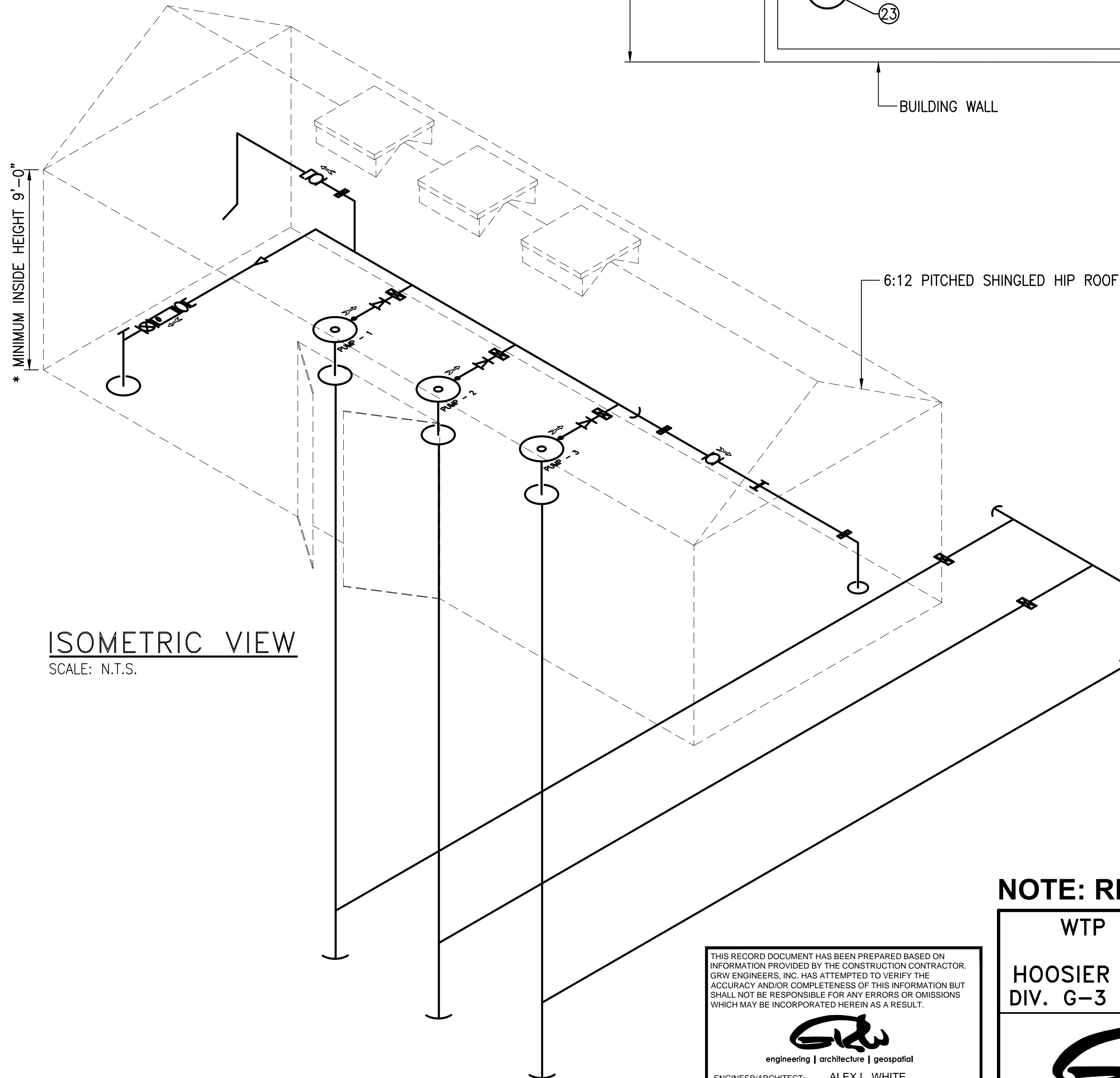


* CONTRACTOR SHALL INSTALL NEW METAL GUTTERS & DOWNSPOUTS TO MATCH WATER TREATMENT PLAN BUILDING
TRUSS - DETAIL
SCALE: N.T.S.

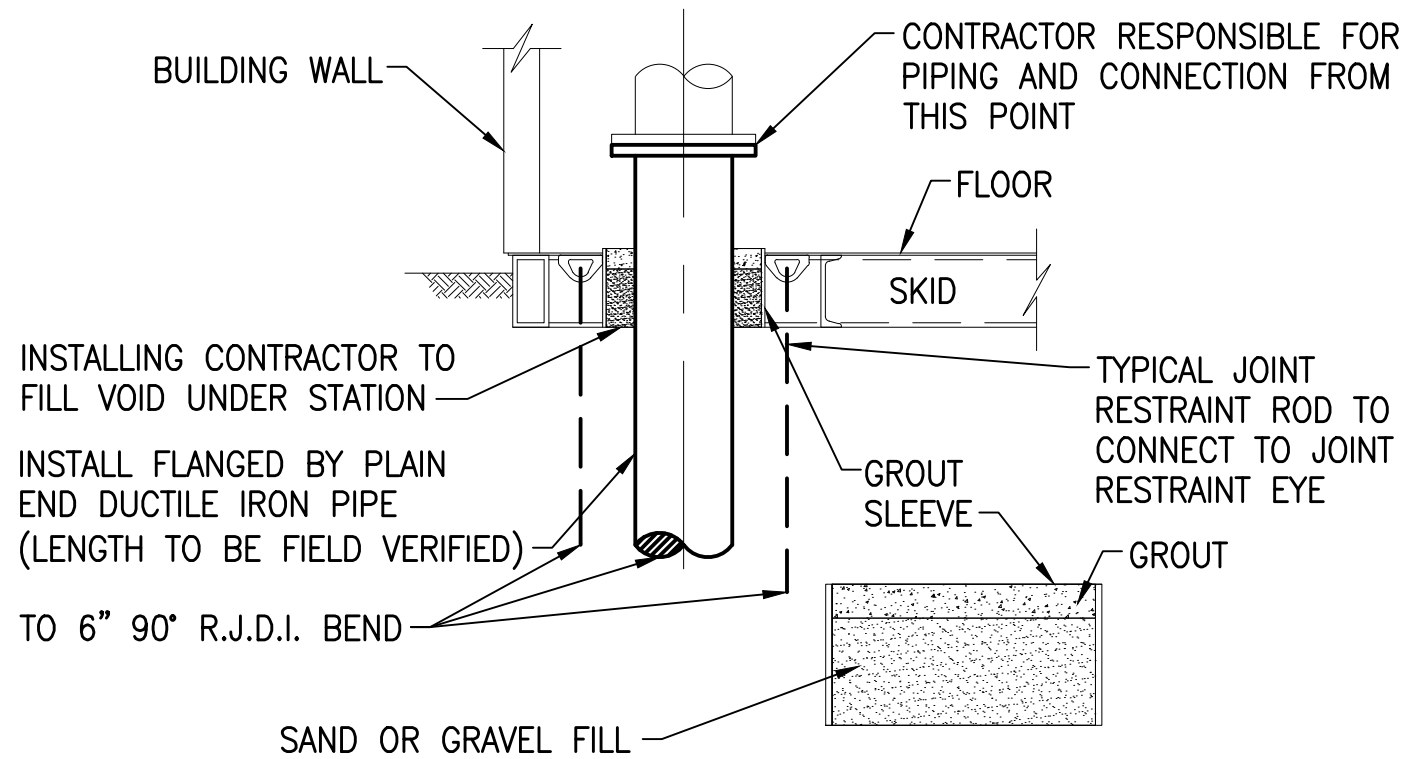


PLAN VIEW
SCALE: N.T.S.

* THESE ARE MINIMUMS, EXACT DIMENSIONS TO BE DETERMINED BY STATION MANUFACTURER.



ISOMETRIC VIEW
SCALE: N.T.S.



TYPICAL PIPE CONNECTION/GROUT-DETAIL
SCALE: N.T.S.



- 1 ELECTRICAL POWER, SERVICE AND CONTROL PANELS SHALL BE WALL MOUNTED ON SUPPORT CHANNEL AND TO MEET NEC 110-26 REQUIREMENTS EACH PANEL SHALL HAVE A COMPLETELY UNOBSTRUCTED 42" ACCESS AREA IN FRONT OF THE PANEL; SUCH AREA TO EXTEND FLOOR TO CEILING.
- 2 PIPING MUST BE ARRANGED THAT A MINIMUM 30" WIDE UNOBSTRUCTED WALKUP SERVICE SPACE ON THREE SIDES OF EACH PUMP IS PROVIDED WITHOUT CLIMBING OR STEPPING OVER ANY DEVICE OR PIPING.
- 3 OPENING LOCATIONS ARE TYPICAL. CONTRACTOR IS TO CONFIRM ACTUAL SIZE AND LOCATION WITH BOOSTER STATION MANUFACTURER.

LEGEND	
1	20" MAIN SUCTION
2	20" SUCTION HEADER
3	10" BUTTERFLY VALVE
4	150 HP PUMP
5	1" AIR RELEASE VALVE
6	10" CHECK VALVE
7	10" BUTTERFLY VALVE
8	20" DISCHARGE HEADER
9	6" BUTTERFLY VALVE
10	6" PRESSURE RELIEF VALVE
11	6" RESTRAINED FLANGED ADAPTER
12	6" RELIEF TO ATMOSPHERE
13	2" BUTTERFLY VALVE
14	2" CONTROL VALVE
15	2" RESTRAINED COUPLING
16	4" OUTLET DISCHARGE
17	10"x20" CONCENTRIC REDUCER
18	10" RESTRAINED FLANGE COUPLING ADAPTER
19	10" STRAINER
20	10" METER
21	10" GATE VALVE
22	2 1/2" METER TEST STATION
23	20" MAIN DISCHARGE
24	PUMP HATCH

NOTE: REFER TO MANUFACTURER'S AS-BUILTS FOR MORE INFORMATION.

THIS RECORD DOCUMENT HAS BEEN PREPARED BASED ON INFORMATION PROVIDED BY THE CONSTRUCTION CONTRACTOR. GRW ENGINEERS, INC. HAS ATTEMPTED TO VERIFY THE ACCURACY AND/OR COMPLETENESS OF THIS INFORMATION BUT SHALL NOT BE RESPONSIBLE FOR ANY ERRORS OR OMISSIONS WHICH MAY BE INCORPORATED HEREIN AS A RESULT.

GRW
engineering | architecture | geospatial
ENGINEER/ARCHITECT: ALEX L. WHITE
CONSTRUCTION COMPANY: ENGINEERED FLUID, INC.
DATE: FEBRUARY 2014

WTP HIGH SERVICE PUMP STATION ONE LINE DIAGRAM HOOSIER HILLS REGIONAL WATER DISTRICT DIV. G-3 – P.S. & TELEMTRY IMPROVEMENTS				CLIENT CONTRACT NO. G-3				GRW PROJECT NO. 3235			
 engineering architecture geospatial www.grwinc.com				DRAWING SCALE CHECK:  THIS MARK SHOULD MEASURE EXACTLY 1" WHEN PLOTTED				ALL RIGHTS RESERVED: THIS DOCUMENT IS THE PROPERTY OF GRW, INC. AND SHALL NOT BE REPRODUCED IN WHOLE OR IN PART OR USED FOR CONSTRUCTION OF OTHER THAN THIS SPECIFIC PROJECT WITHOUT WRITTEN PERMISSION OF GRW, INC.			
								This document, originally issued, sealed, and signed by Alex L. White, Indiana Professional Engineer, No. 11100292, on March 26, 2012, shall not be used in lieu of a certified document.			
								DESIGNED: ALW		DATE: MARCH 2012	
								DRAWN: GCR		SCALE: 3/8" = 1'-0"	
								REVIEWED: DRC		SHEET NO.	
								APPROVED: ALW		C-05	
1 AS-BUILTS				2/14 CJF							
NO.				DESCRIPTION				DATE BY			
				REVISIONS							