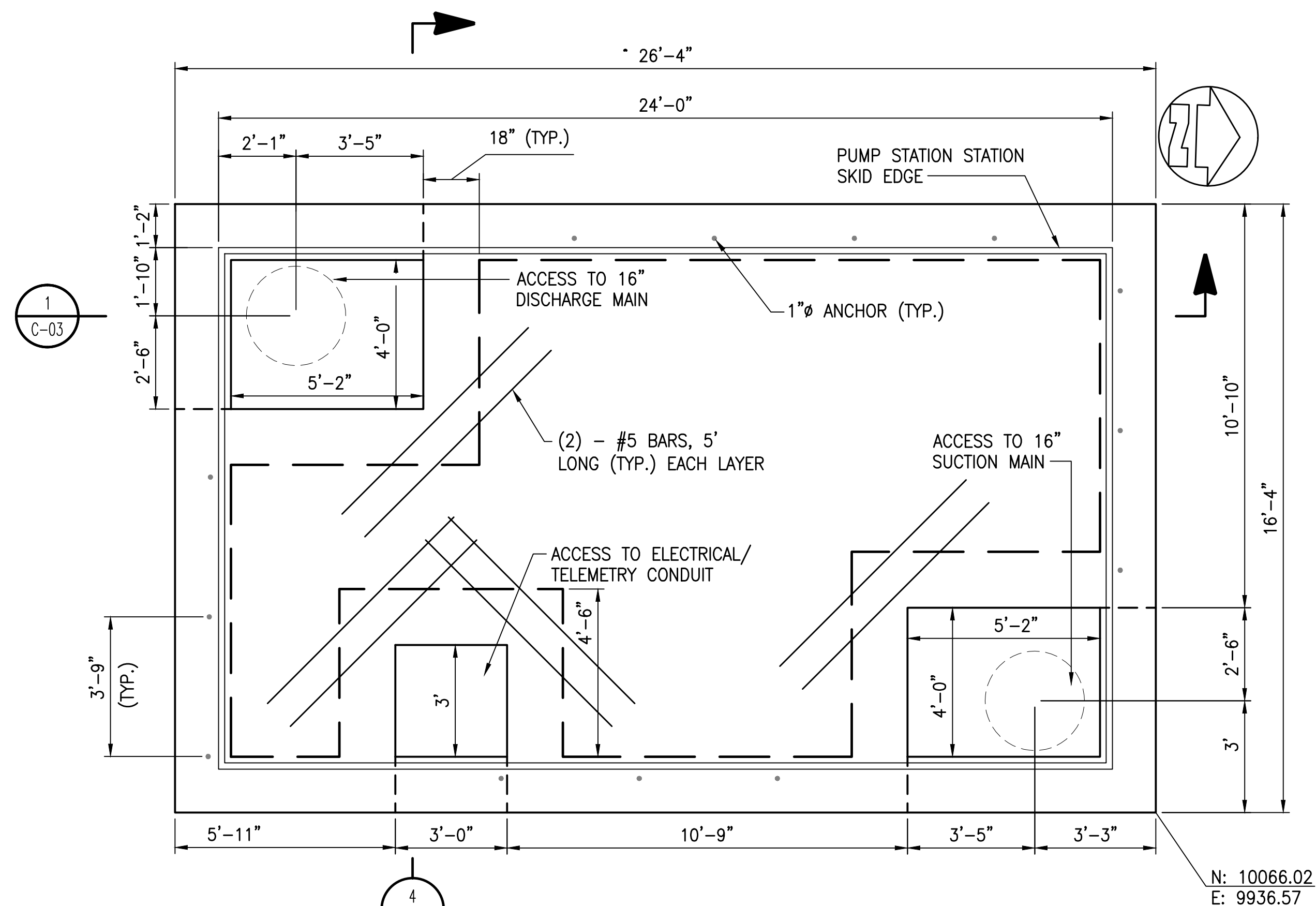


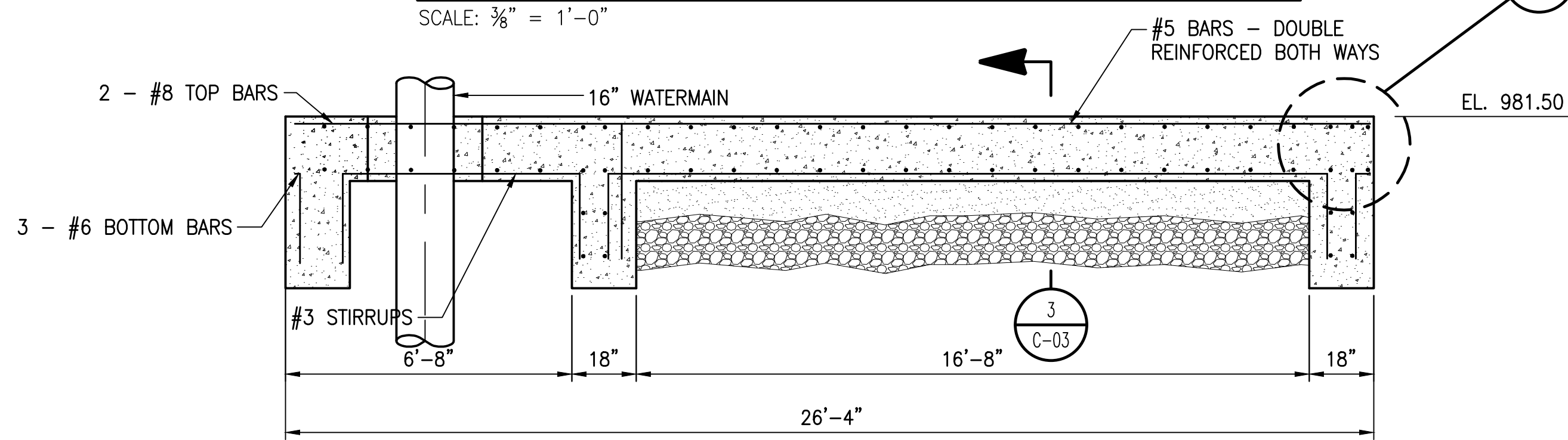
PRINTED: 2/25/2014 @ 9:25AM

FILE NAME: I:\3235 - HHRWD - Division G\Drawings\Design\G-3\Land\Drawings\3235-G3-C-03.dwg



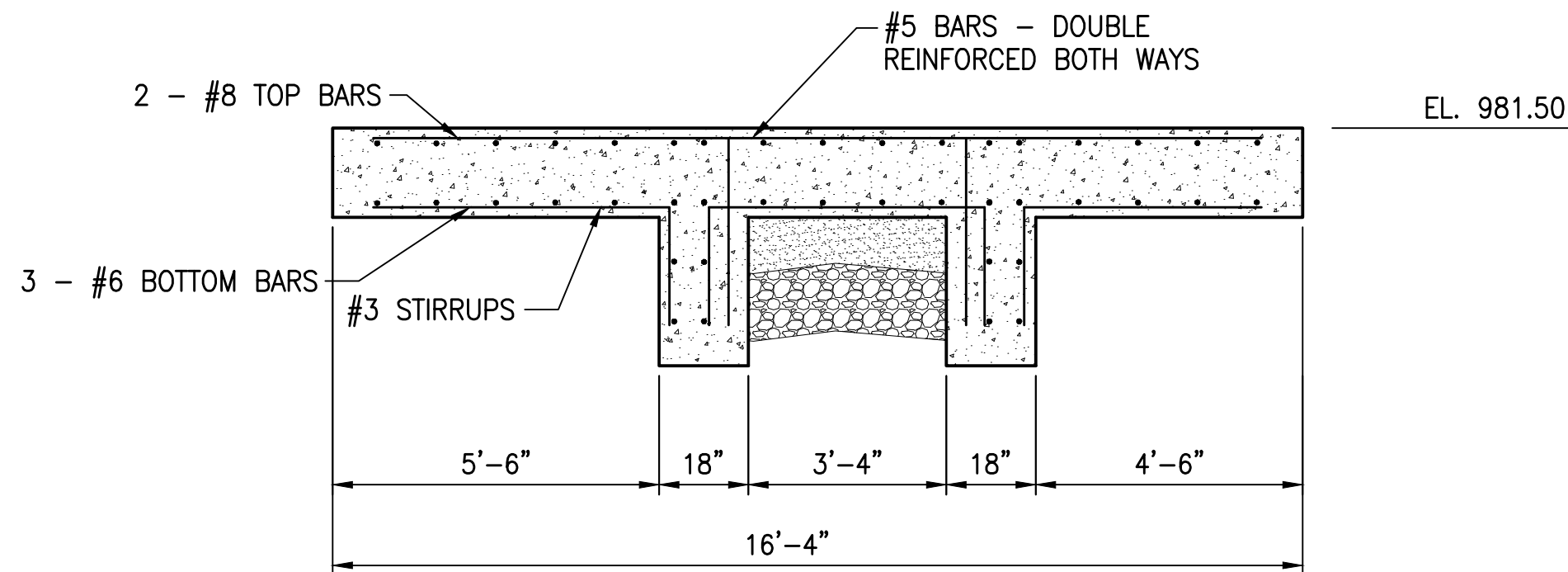
TYPICAL FOUNDATION LAYOUT - DETAIL

SCALE: 3/8" = 1'-0"



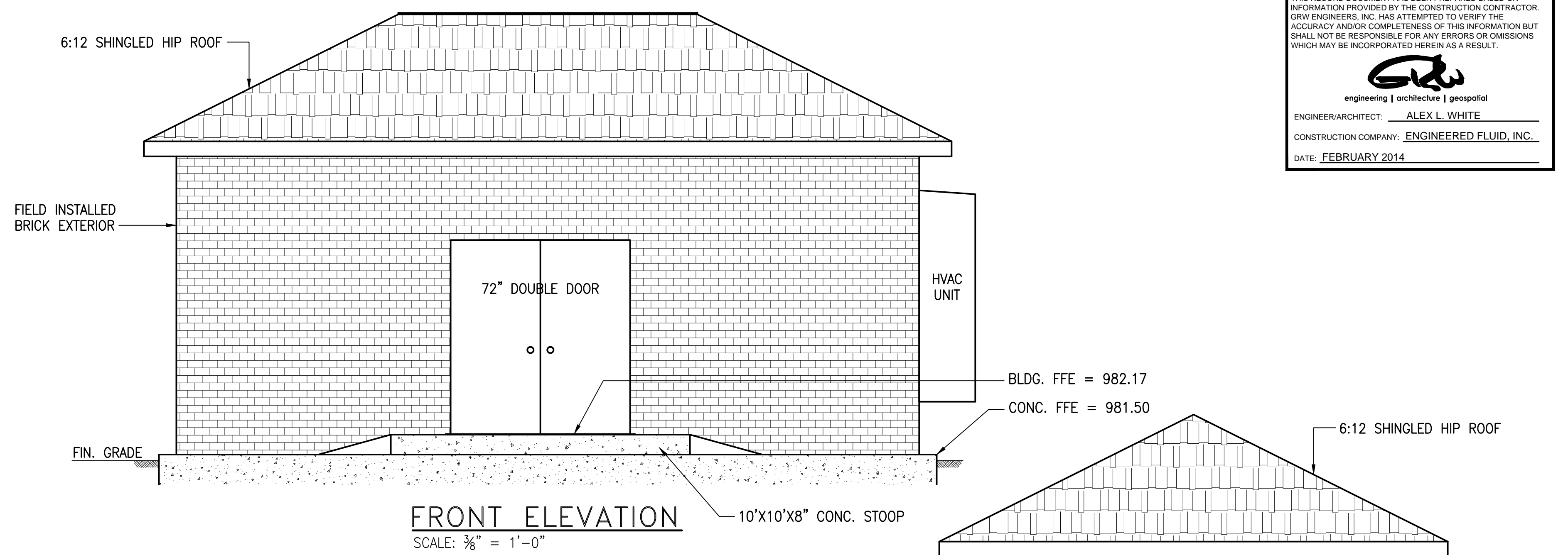
SECTION

SCALE: 3/8"=1'-0"



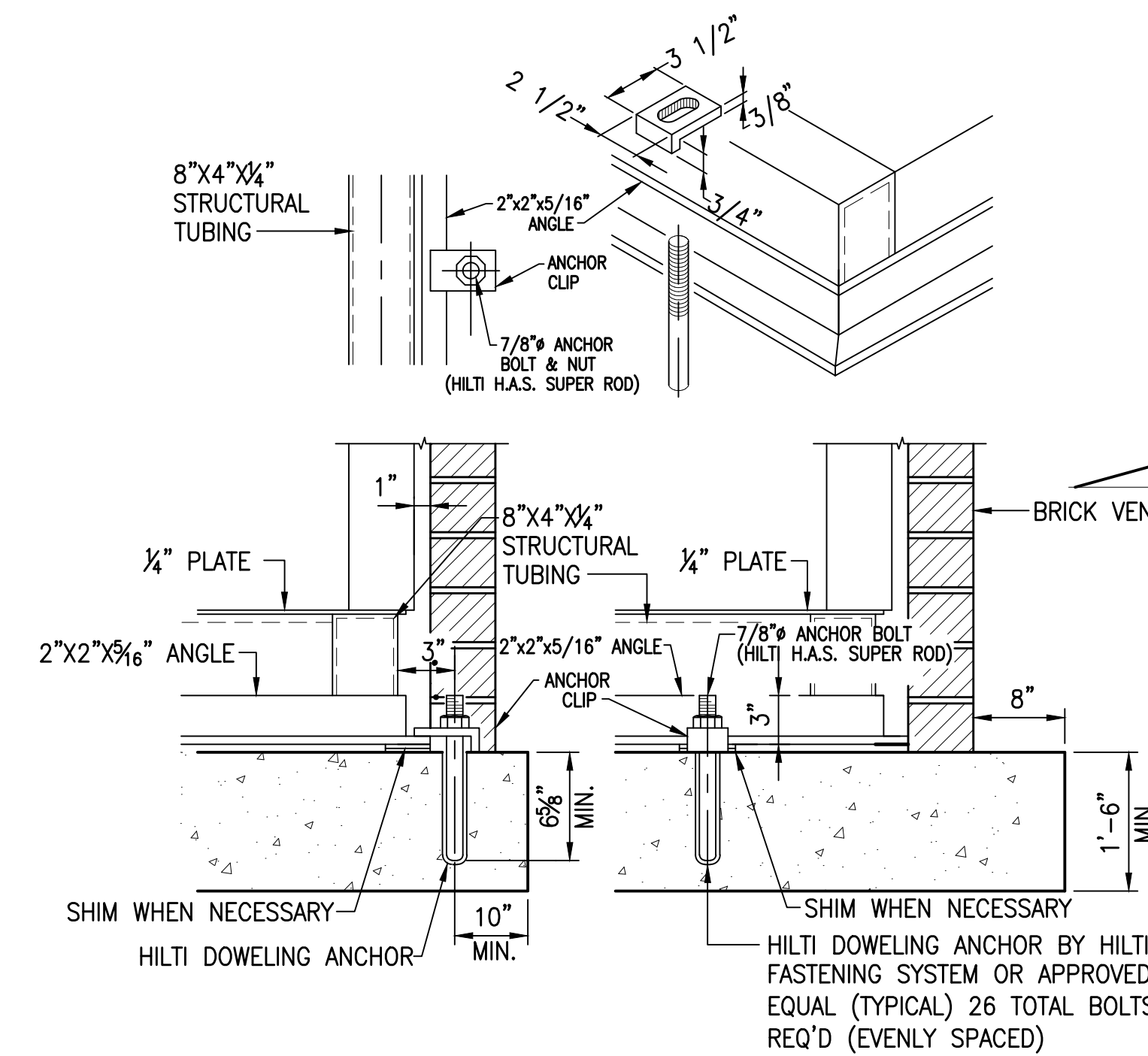
SECTION

SCALE: 3/8"=1'-0"



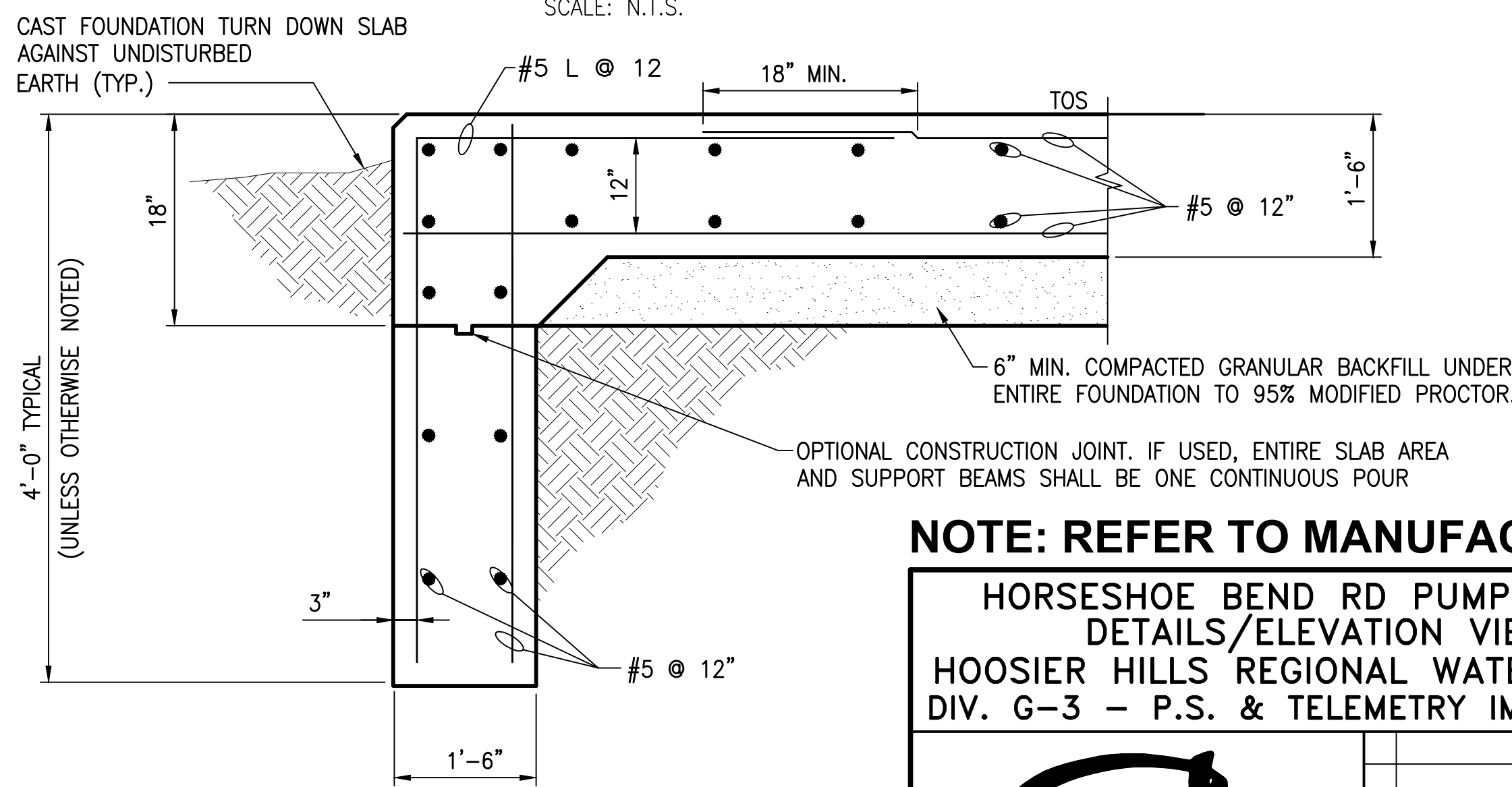
FRONT ELEVATION

SCALE: 3/8" = 1'-0"



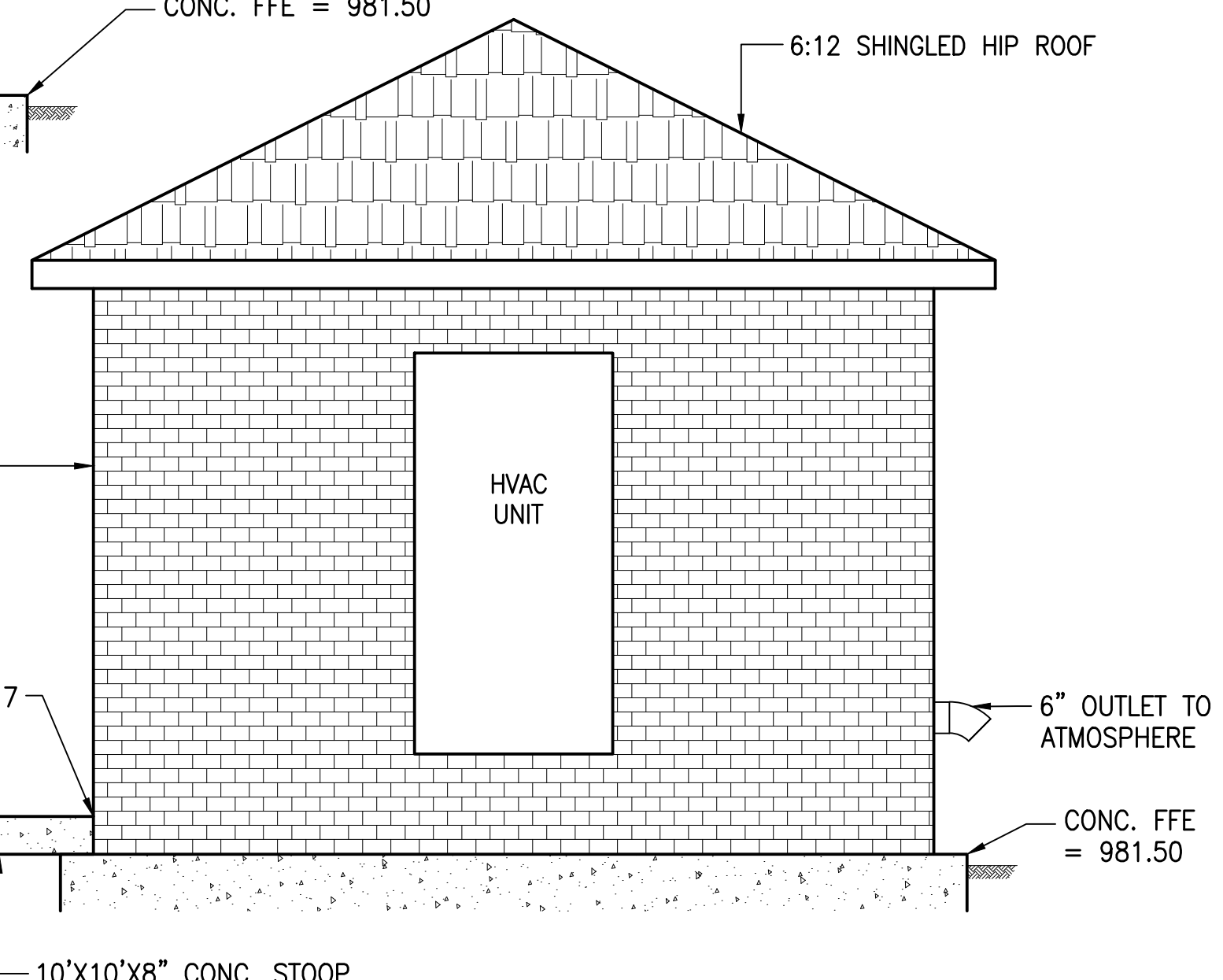
TYPICAL LEDGE - DETAIL

SCALE: N.T.S.



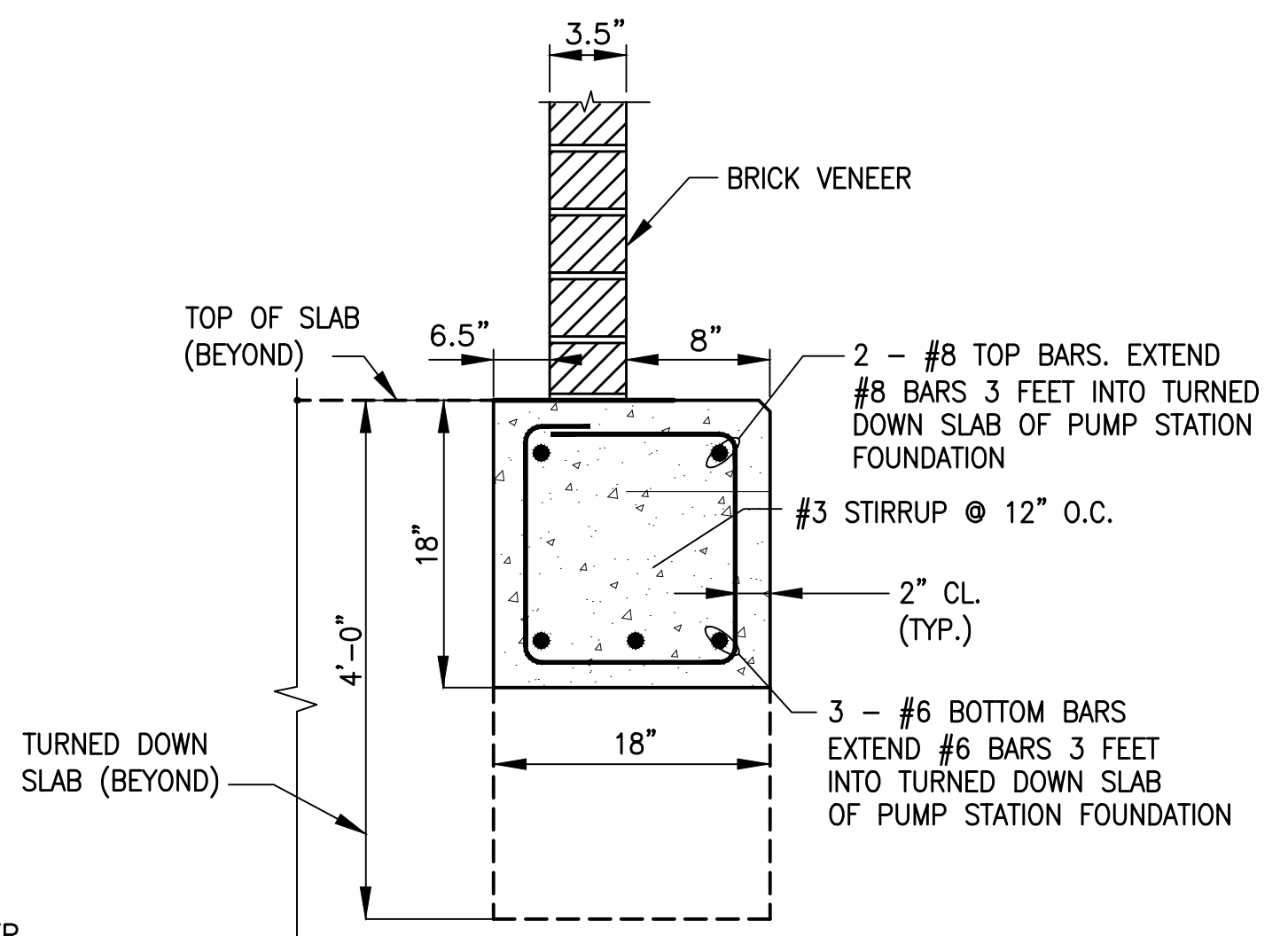
DETAIL

SCALE: N.T.S.



RIGHT SIDE ELEVATION


SCALE: 3/8" = 1'-0"



DETAIL

SCALE: N.T.S.

NOTE: REFER TO MANUFACTURER'S AS-BUILTS FOR MORE INFORMATION.

HORSESHOE BEND RD PUMP STATION DETAILS/ELEVATION VIEWS HOOSIER HILLS REGIONAL WATER DISTRICT DIV. G-3 - P.S. & TELEMTRY IMPROVEMENTS				CLIENT CONTRACT NO. G-3				GRW PROJECT NO. 3235				
				DRAWING SCALE CHECK: _____ THIS MARK SHOULD MEASURE EXACTLY 1" WHEN PLOTTED								
				ALL RIGHTS RESERVED: THIS DOCUMENT IS THE PROPERTY OF GRW, INC. AND SHALL NOT BE REPRODUCED IN WHOLE OR IN PART OR USED FOR CONSTRUCTION OF OTHER THAN THIS SPECIFIC PROJECT WITHOUT WRITTEN PERMISSION OF GRW, INC.								
 engineering   architecture   geospatial www.grwinc.com										DESIGNED: DSW	DATE: MARCH 2012	
										This document, originally issued, sealed, and signed by Alex L. White, Indiana Professional Engineer, No. 11100292, on March 26, 2012, shall not be used in lieu of a certified document.	DRAWN: GCR	SCALE: AS SHOWN
				1	AS-BUILTS		2/14	CJF	REVIEWED: DRC		SHEET NO.	
				NO.		DESCRIPTION	DATE	BY	APPROVED: ALW		C-03	
				REVISIONS								