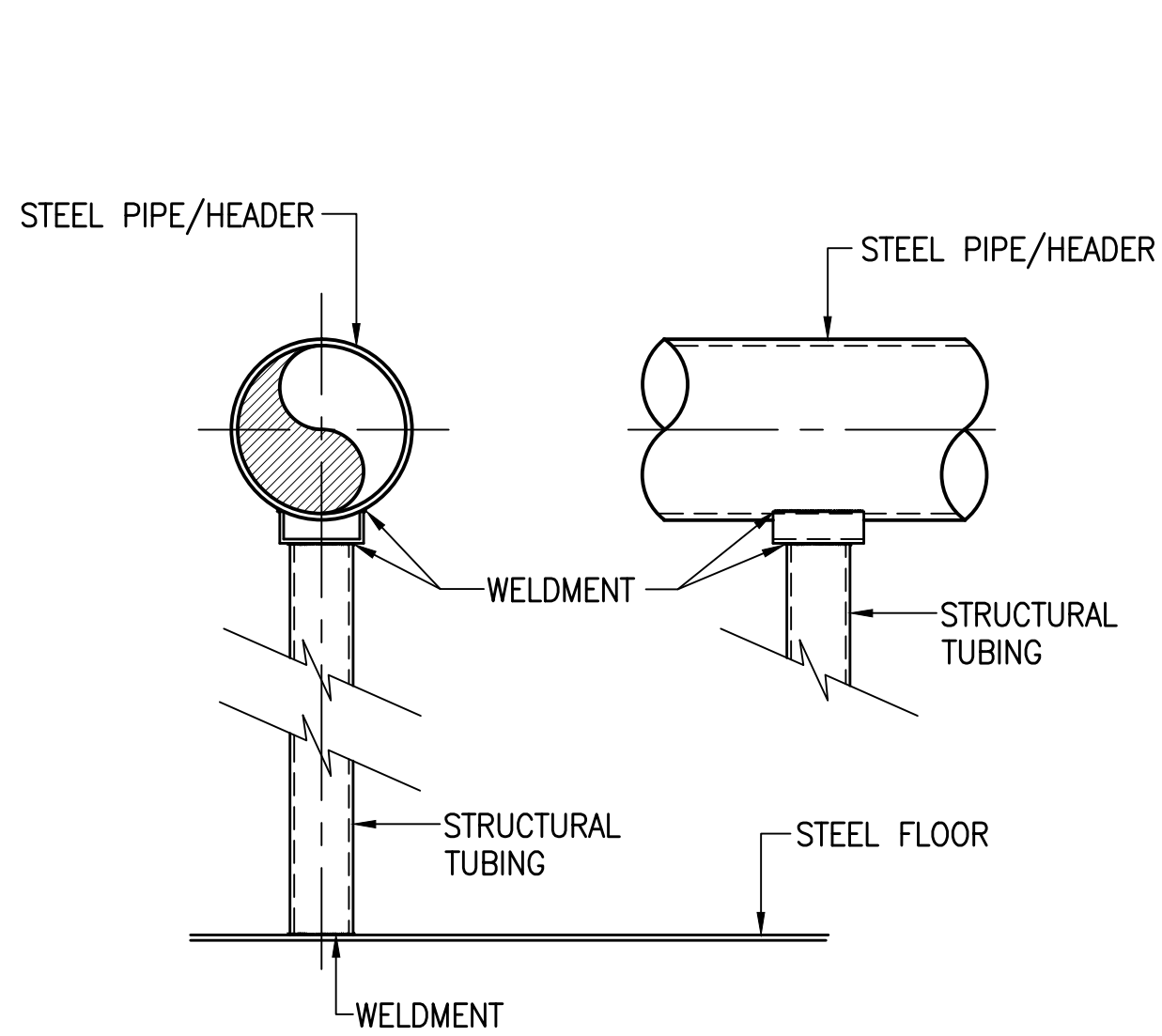
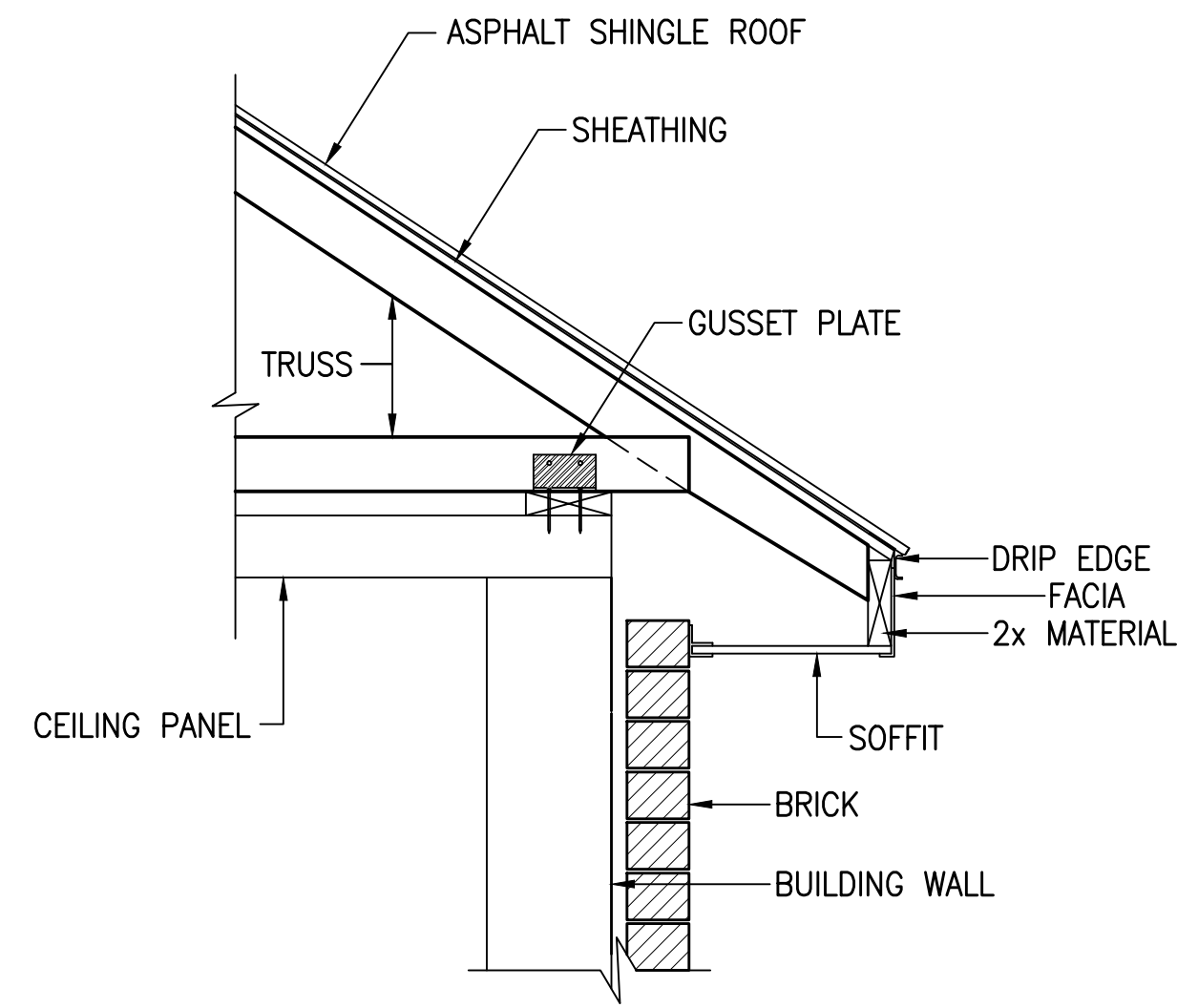


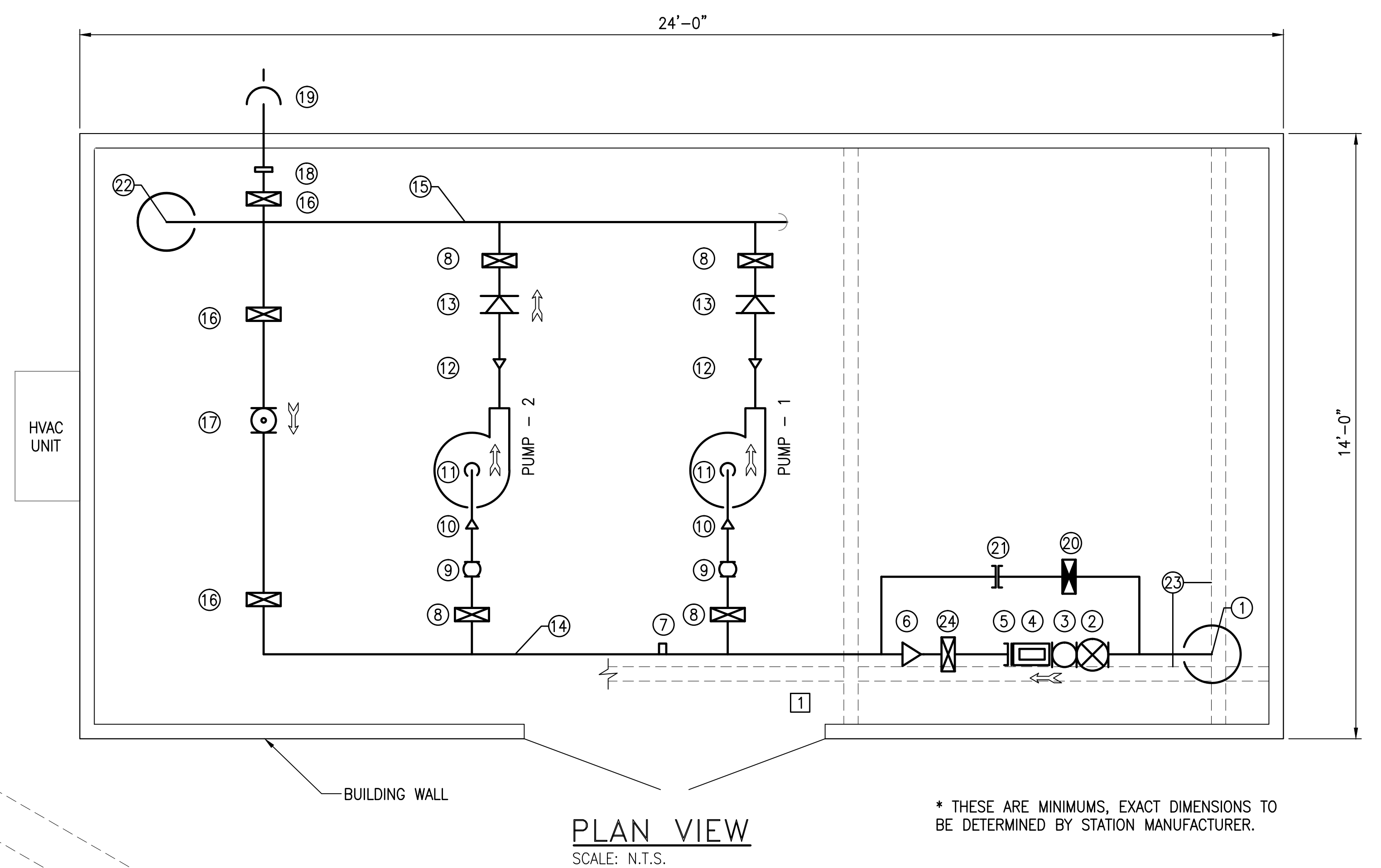
FILE NAME: I:\3235 - IHRWD - Division G\Drawn\Design\G-3\Land\Draw\3235-G3-C-02.dwg
PRINTED: 2/25/2014 @ 9:25AM



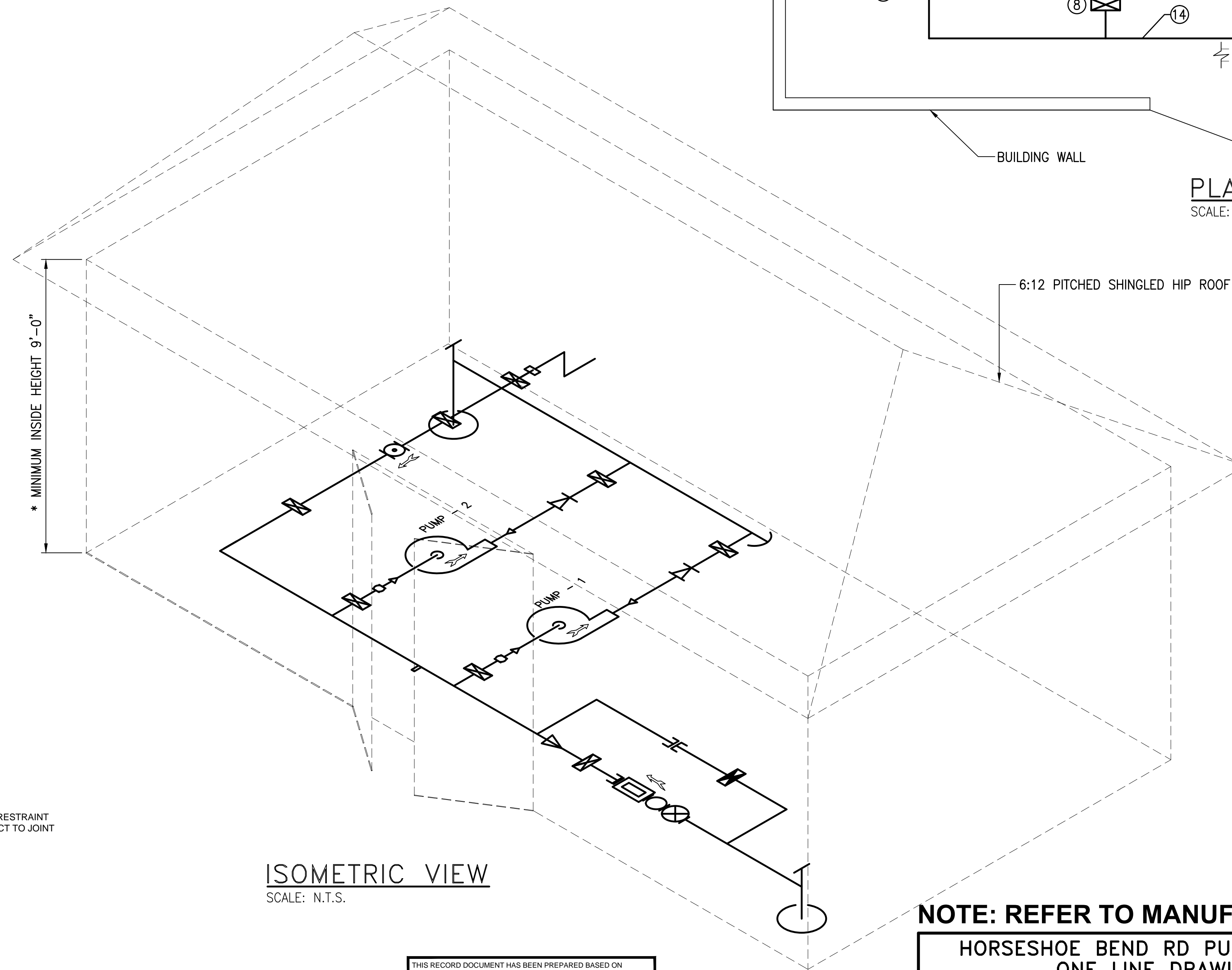
TYPICAL PIPE SUPPORT - DETAIL
SCALE: N.T.S.



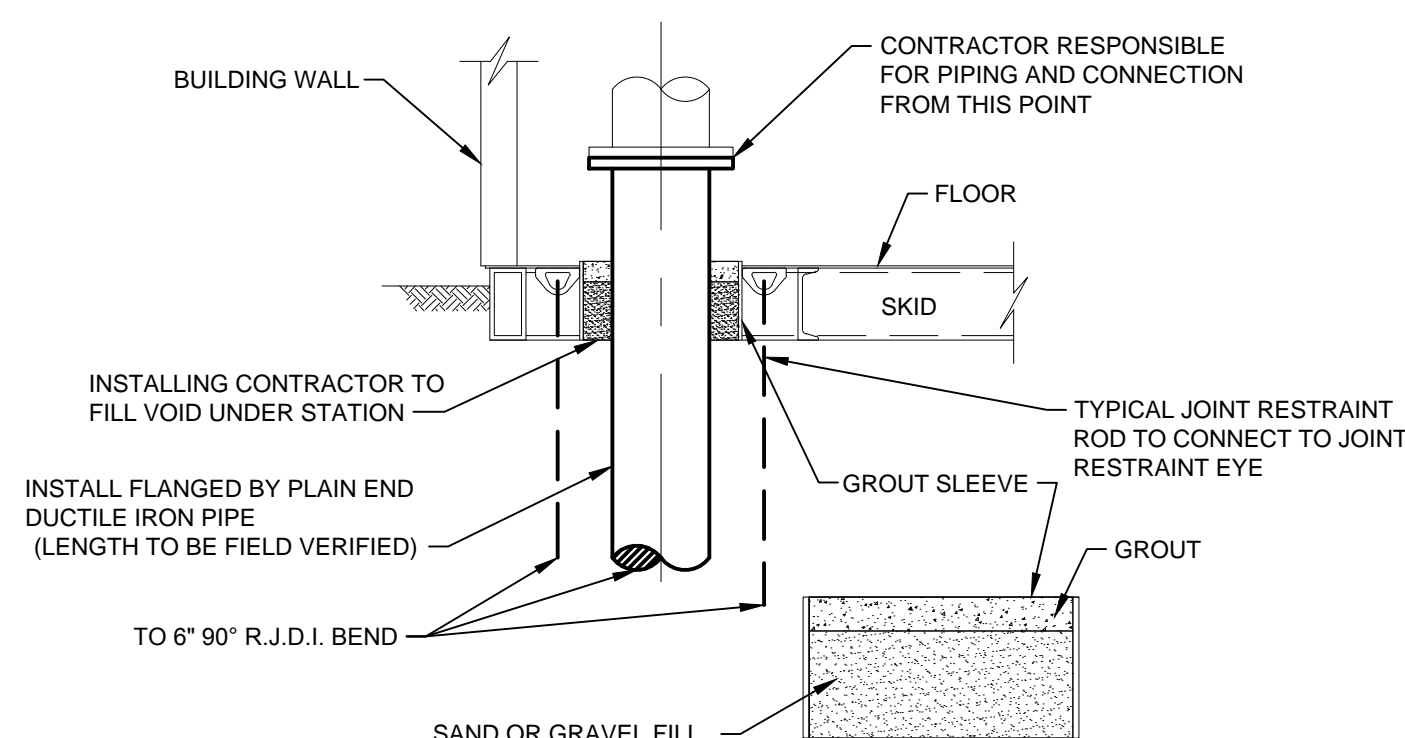
TRUSS - DETAIL
SCALE: N.T.S.



* THESE ARE MINIMUMS, EXACT DIMENSIONS TO BE DETERMINED BY STATION MANUFACTURER.



LEGEND	
1	16" MAIN SUCTION
2	10" GATE VALVE
3	10" STRAINER
4	10" METER
5	10" RESTRAINED FLANGED COUPLING ADAPTER
6	10"x16" CONCENTRIC REDUCER
7	2 1/2" METER TEST STATION
8	12" BUTTERFLY VALVE
9	12" ELASTOMER PIPE CONNECTOR
10	8"x12" ECCENTRIC REDUCER
11	PUMP
12	6"x12" CONCENTRIC REDUCER
13	12" CHECK VALVE
14	16" SUCTION HEADER
15	16" DISCHARGE HEADER
16	6" BUTTERFLY VALVE
17	6" CONTROL VALVE
18	6" VICTAULIC FITTING
19	6" OUTLET TO ATMOSPHERE
20	16" BUTTERFLY VALVE (NORM. CLOSED)
21	16" RESTRAINED COUPLING
22	16" MAIN DISCHARGE
23	CRANE RAIL SYSTEM
24	10" BUTTERFLY VALVE




TYPICAL PIPE CONNECTION/GROUT-DETAIL
SCALE: N.T.S.

THIS RECORD DOCUMENT HAS BEEN PREPARED BASED ON INFORMATION PROVIDED BY THE CONSTRUCTION CONTRACTOR. GRW ENGINEERS, INC. HAS ATTEMPTED TO VERIFY THE ACCURACY AND/OR COMPLETENESS OF THIS INFORMATION BUT SHALL NOT BE RESPONSIBLE FOR ANY ERRORS OR OMISSIONS WHICH MAY BE INCORPORATED HEREIN AS A RESULT.

GRW
engineering | architecture | geospatial
ENGINEER/ARCHITECT: ALEX L. WHITE
CONSTRUCTION COMPANY: ENGINEERED FLUID, INC.
DATE: FEBRUARY 2014

NOTE: REFER TO MANUFACTURER'S AS-BUILTS FOR MORE INFORMATION.

<div>HORSESHOE BEND RD PUMP STATION ONE LINE DRAWING HOOSIER HILLS REGIONAL WATER DISTRICT DIV. G-3 - P.S. & TELEMTRY IMPROVEMENTS</div>				CLIENT CONTRACT NO. G-3		GRW PROJECT NO. 3235	
				DRAWING SCALE CHECK: <div></div> THIS MARK SHOULD MEASURE EXACTLY 1" WHEN PLOTTED			
				ALL RIGHTS RESERVED: THIS DOCUMENT IS THE PROPERTY OF GRW, INC. AND SHALL NOT BE REPRODUCED IN WHOLE OR IN PART OR USED FOR CONSTRUCTION OF OTHER THAN THIS SPECIFIC PROJECT WITHOUT WRITTEN PERMISSION OF GRW, INC.			
<div> engineering architecture geospatial www.grwinc.com</div>				<div>This document, originally issued, sealed, and signed by Alex L. White, Indiana Professional Engineer, No. 11100292, on March 26, 2012, shall not be used in lieu of a certified document.</div>		DESIGNED: ALW	DATE: MARCH 2012
			DRAWN: GCR			SCALE: AS SHOWN	
			REVIEWED: DRC			SHEET NO.	
			APPROVED: ALW			C-02	
		1	AS-BUILTS	2/14	CJF		
		NO.	DESCRIPTION	DATE	BY		
		REVISIONS					