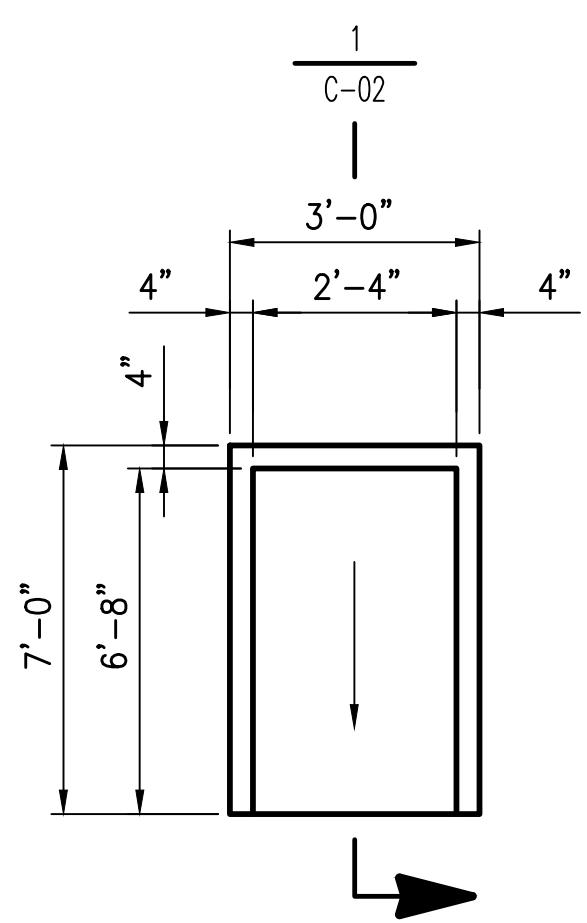
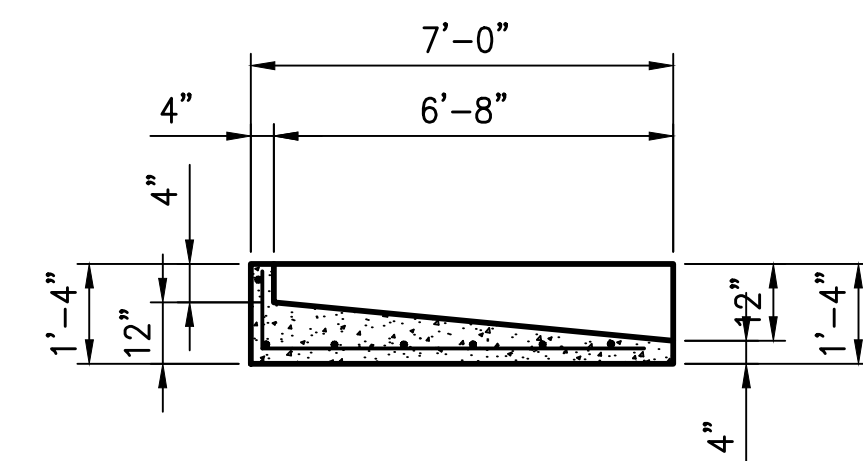


FOUNDATION AND INFLUENT PIPING FOR COMPOSITE TANK – DETAIL
SCALE: N.T.S.



CONC. SPLASH BLOCK – PLAN
SCALE: N.T.S.



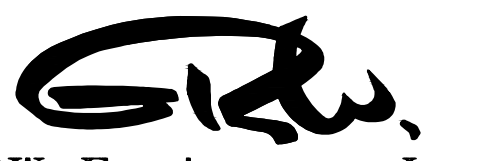
SECTION
SCALE: N.T.S.

THIS RECORD DOCUMENT HAS BEEN PREPARED BASED ON INFORMATION PROVIDED BY THE CONSTRUCTION CONTRACTOR. GRW ENGINEERS, INC. HAS ATTEMPTED TO VERIFY THE ACCURACY AND/OR COMPLETENESS OF THIS INFORMATION BUT SHALL NOT BE RESPONSIBLE FOR ANY ERRORS OR OMISSIONS WHICH MAY BE INCORPORATED HEREIN AS A RESULT.

GRW
ENGINEERS - ARCHITECTS - PLANNERS
www.grwinc.com

ENGINEER/ARCHITECT: **ALEX L. WHITE**
CONSTRUCTION COMPANY: **CALDWELL TANKS, INC.**
DATE: **JANUARY 2014**

NOTE: REFER TO MANUFACTURER'S AS-BUILTS FOR MORE INFORMATION.

ELEVATED WATER STORAGE TANK DETAILS HOOSIER HILLS REGIONAL WATER DISTRICT DIV. G-2 – ELEV. WATER STORAGE TANK		CLIENT CONTRACT NO. G-2	GRW PROJECT NO. 3235
DRAWING SCALE CHECK: _____ THIS MARK SHOULD MEASURE EXACTLY 1" WHEN PLOTTED		ALL RIGHTS RESERVED: THIS DOCUMENT IS THE PROPERTY OF GRW, INC. AND SHALL NOT BE REPRODUCED IN WHOLE OR IN PART OR USED FOR CONSTRUCTION OF OTHER THAN THIS SPECIFIC PROJECT WITHOUT WRITTEN PERMISSION OF GRW, INC.	
 GRW Engineers, Inc. Engineers, Architects, Planners LEXINGTON LOUISVILLE NASHVILLE INDIANAPOLIS FORT MITCHELL KNOXVILLE ARLINGTON	1 AS-BUILTS	2/14	MAA
	REVISIONS		
This document, originally issued, sealed, and signed by Alex L. White, Indiana Professional Engineer, No. 11100292, on March 26, 2012 shall not be used in lieu of a certified document.		DESIGNED: ALW DRAWN: GCR REVIEWED: DRC APPROVED: ALW	DATE: MARCH 2012 SCALE: AS SHOWN SHEET NO. C-03