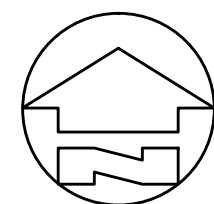
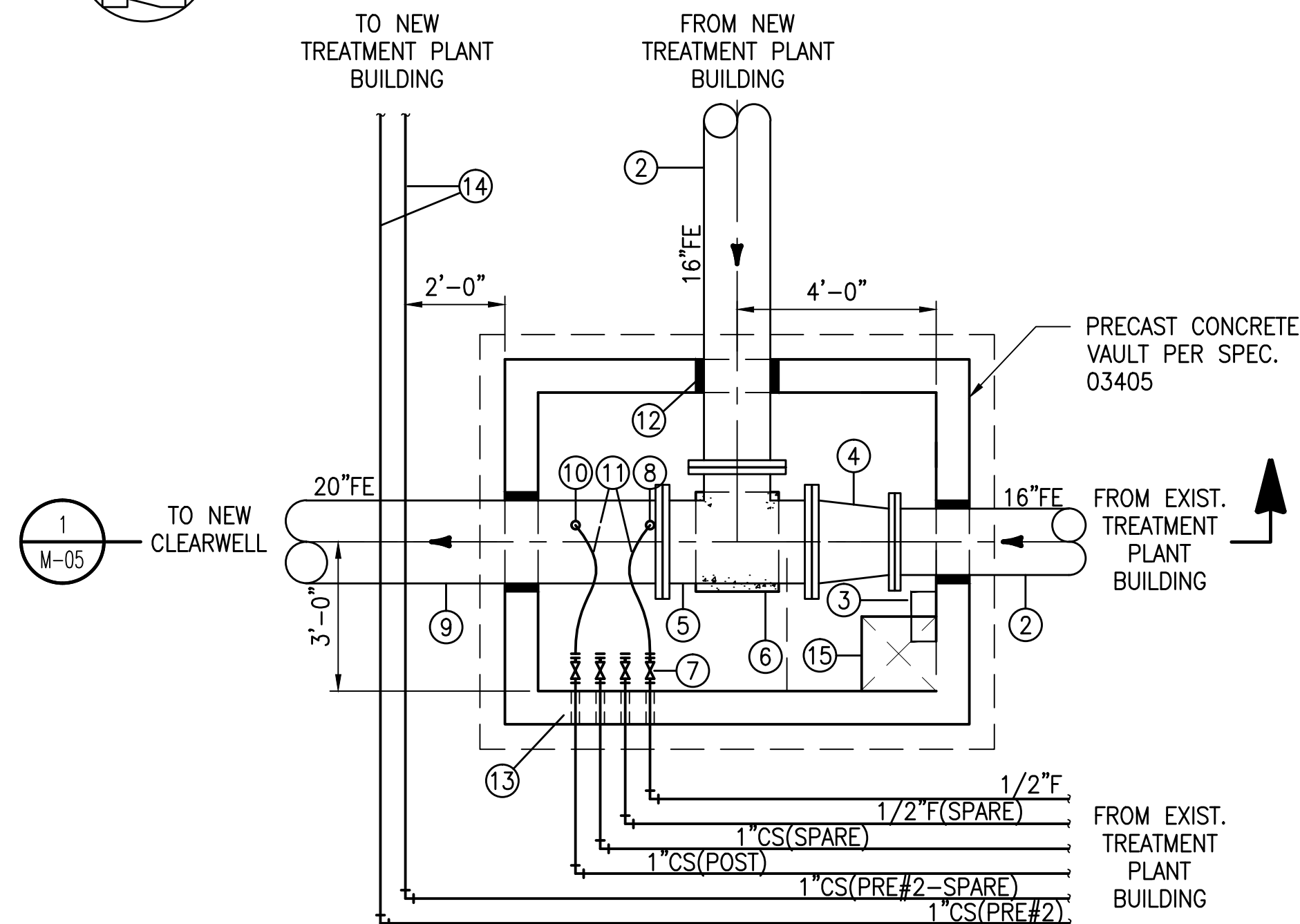


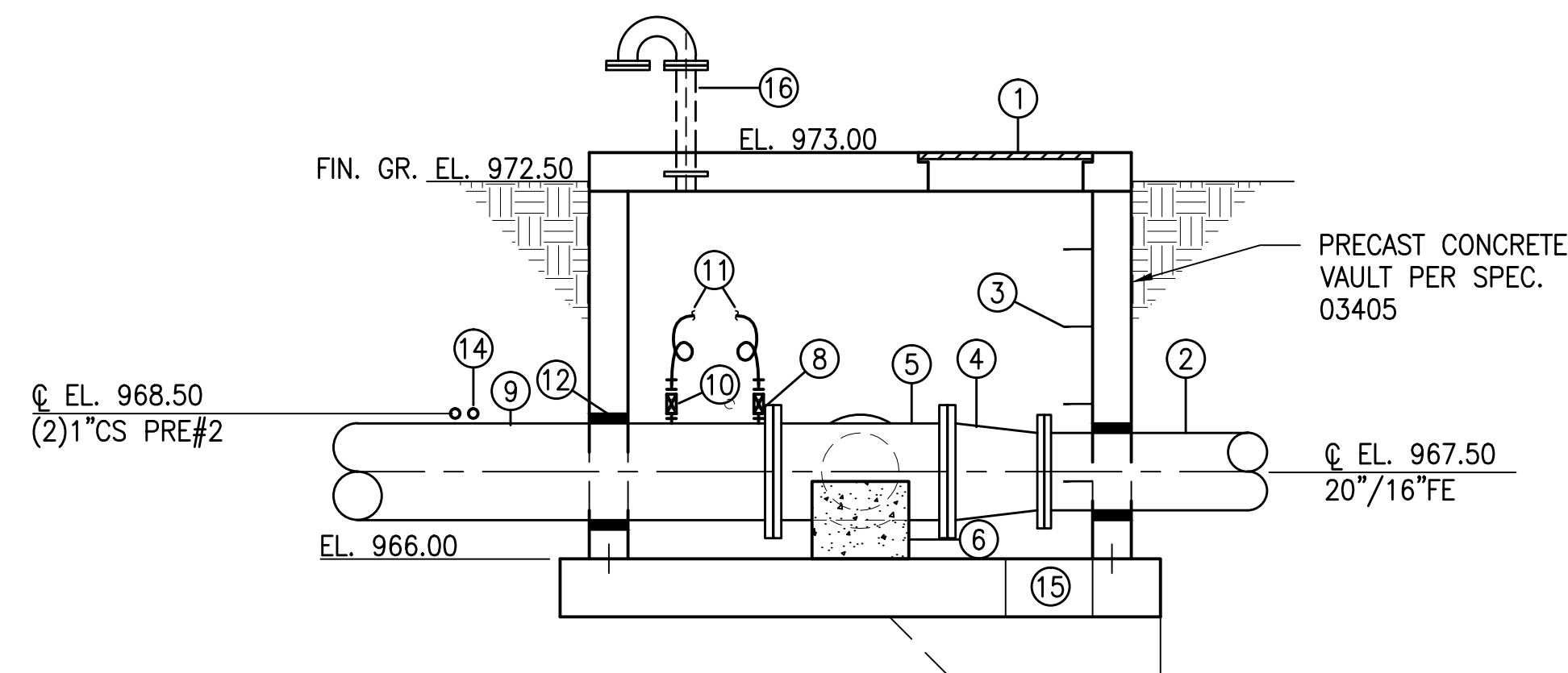
### NEW CHEMICAL FEED VAULT – UPPER PLAN

SCALE: 3/8"=1'-0"



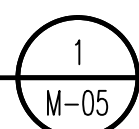
### NEW CHEMICAL FEED VAULT – LOWER PLAN

SCALE: 3/8"=1'-0"



### SECTION

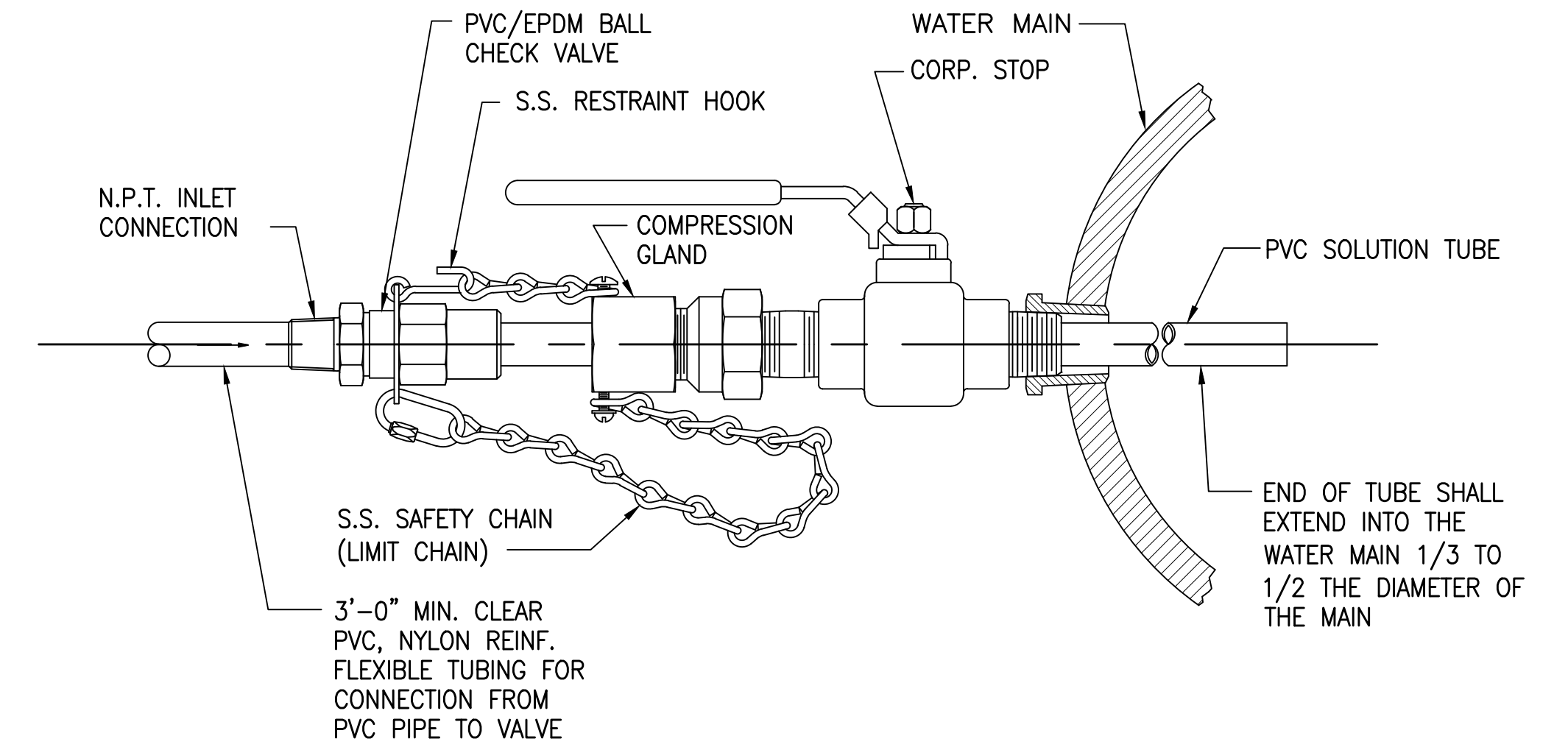
SCALE: 3/8"=1'-0"



- 1 3'-0" X 3'-0" ALUM. ACCESS HATCH W/ SAFETY GRATE
- 2 16" DI PIPE (SEE DETAIL 2/M-06 FOR CONT'N.)
- 3 MANHOLE STEPS
- 4 16" X 20" FLG. DI REDUCER
- 5 16" X 20" FLG. DI TEE
- 6 CONCRETE PIPE SUPPORT
- 7 PVC BALL VALVE (TYP)
- 8 CORPORATION STOP MAIN CONNECTION W/ANTI-SYPHON VALVE
- 9 20" DI PIPE
- 10 CORPORATION STOP MAIN CONNECTION
- 11 1/2" I.D. NYLON REINF. PVC TUBING (TYP)
- 12 WALL SLEEVE W/LINK SEAL & NON-SHRINK GROUT (TYP)
- 13 LINK SEAL (TYP)
- 14 SCH. 80 PVC PIPE (SIZE AS NOTED)
- 15 1'-6" SQ. X 12" DEEP SUMP
- 16 VENT ASSEMBLY (SEE NOTE 2)

#### SHEET NOTES:

1. CONTRACTOR SHALL PROVIDE CLOSED CELL POLYFOAM INSULATION AND PVC OUTER WRAP ON ALL INTERIOR PIPING WITHIN CHEMICAL FEED VAULT.
2. 4" VENT ASSEMBLY SHALL BE COMPRISED OF 4" D.I. WALL PIPE FLG. X PE, 4" D.I. RETURN BEND, 11" O.D. COMPANION FLG. W/ 1/4" MESH BRONZE SCREEN AT OPEN END



### DETAIL – CHEMICAL FEED POINT

SCALE: NTS

