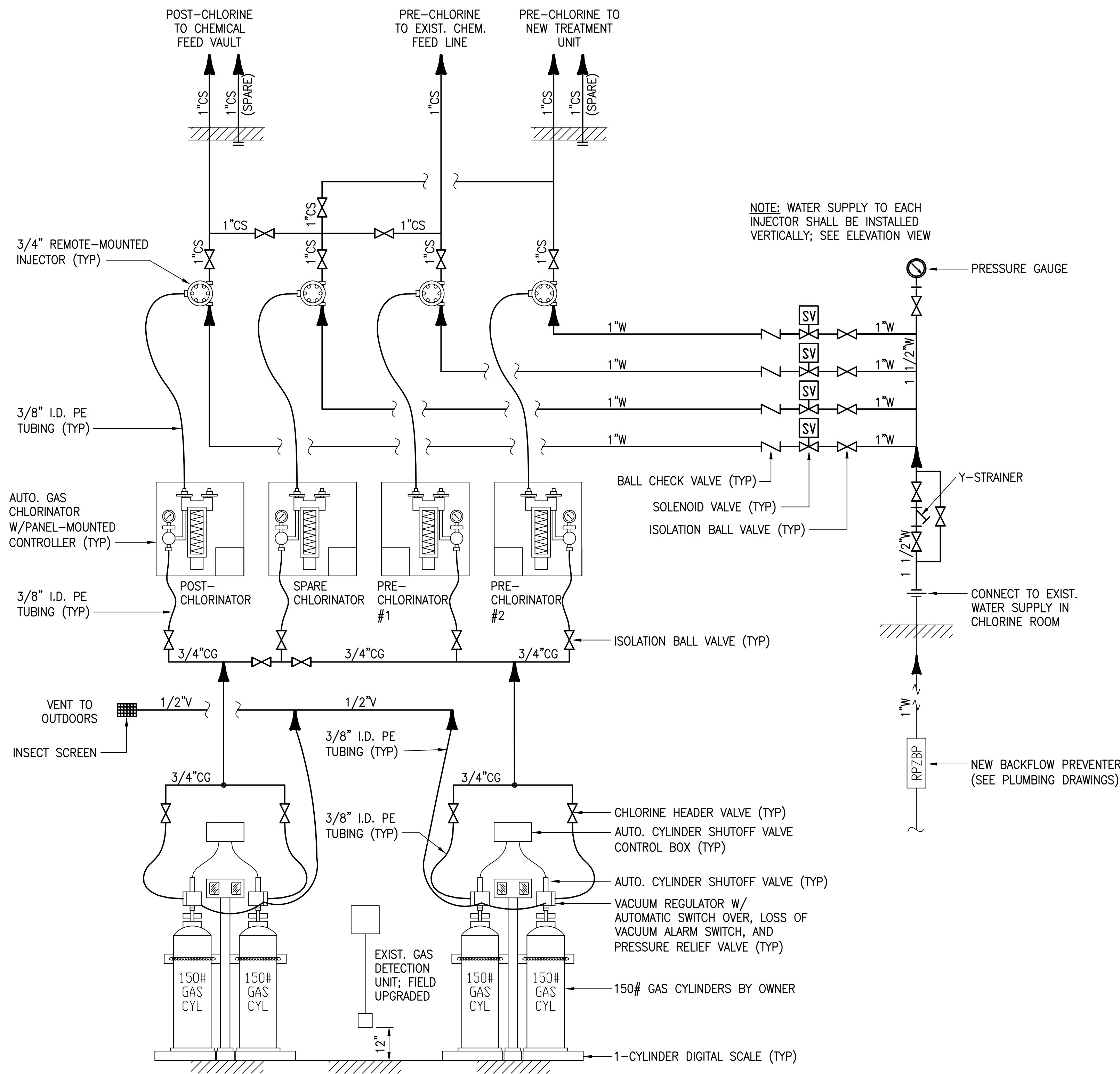


PRINTED: 2/25/2014 @ 9:57AM

FILE NAME: I:\3235 - IHRWD - Division G\Drawings\Design\G-1\Drawings\3235-G-1-M-05.dwg

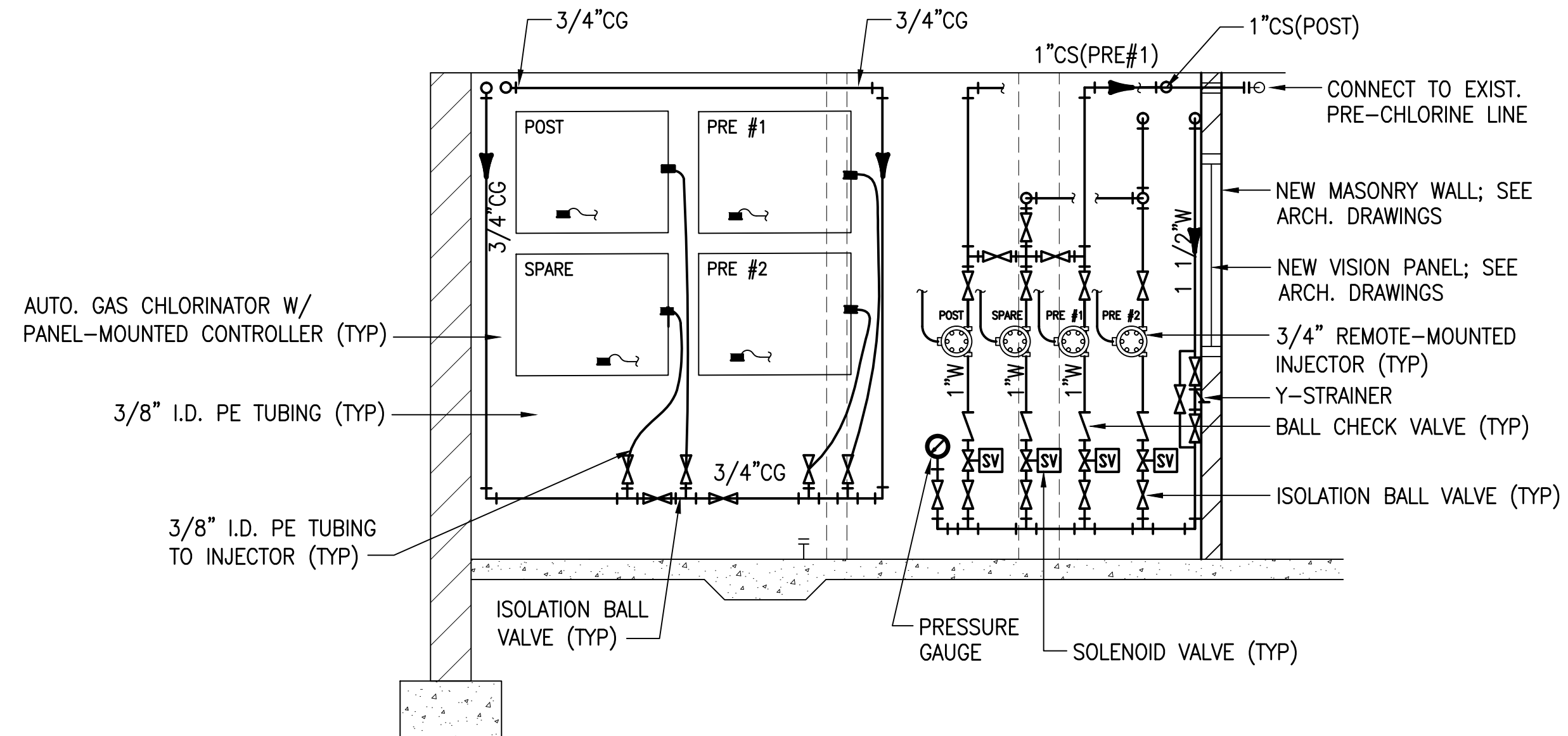


### CHLORINE FEED SYSTEM SCHEMATIC

SCALE: NTS

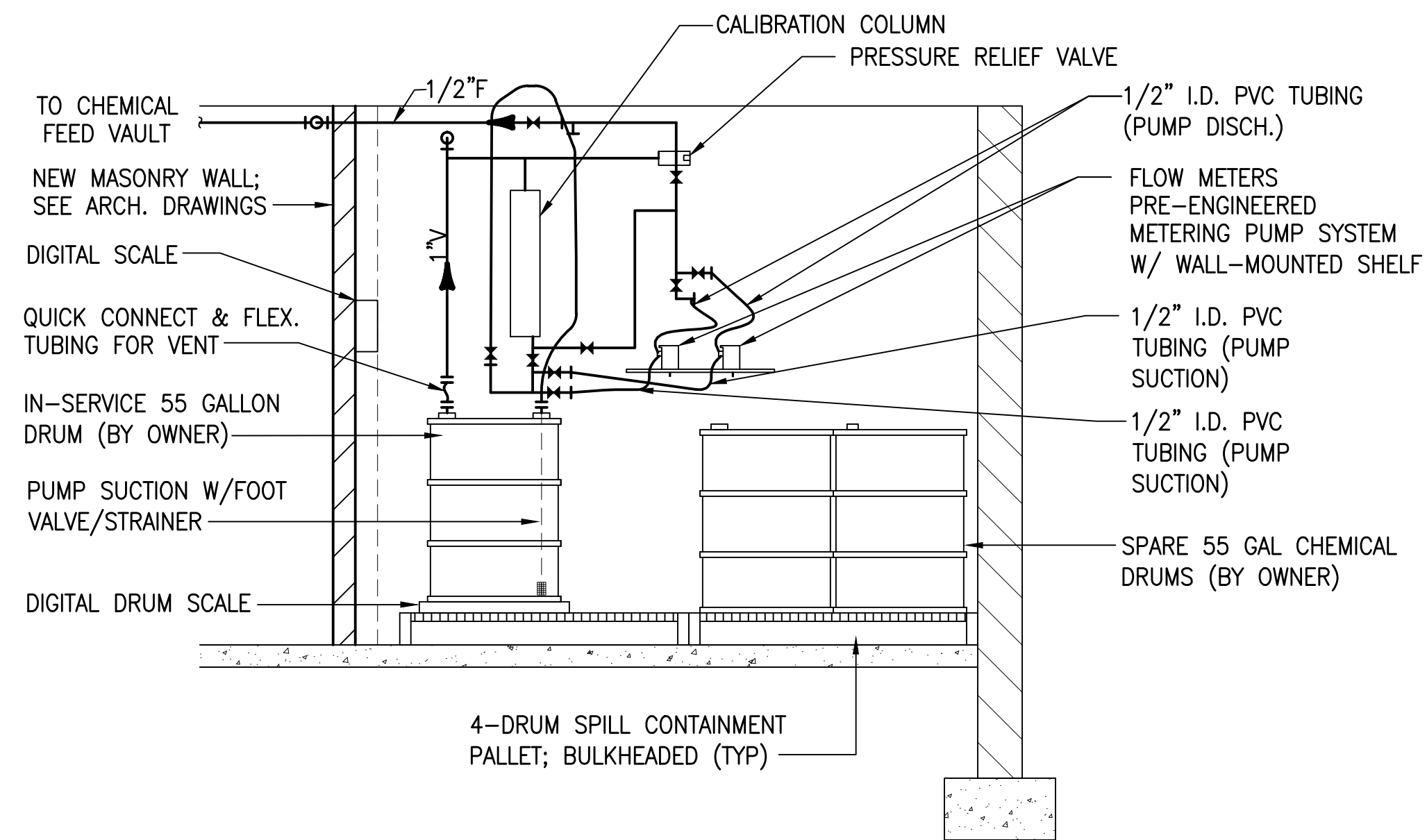
#### NOTES:

- ALL WATER SUPPLY AND CHEMICAL FEED PIPING & FITTINGS SHALL BE SCH. 80 PVC, UNLESS OTHERWISE NOTED. SOLVENT WELD MATERIAL SHALL BE COMPATIBLE WITH CHEMICAL FOR WHICH IT IS INTENDED.
- ALL VALVES AND MISCELLANEOUS APPURTENANCES SHALL BE JOINED USING "TRUE-UNION" CONNECTIONS.
- NOT ALL PIPING/VALVES/APPURTENANCES MAY BE REPRESENTED IN PLAN OR ELEVATION VIEWS, REFER TO SCHEMATIC FOR GENERAL LOCATION AND COORDINATE WITH CHEMICAL FEED SYSTEM INSTALLER. EQUIPMENT MOUNTING HEIGHTS PER MANF. RECOMMENDATIONS.
- CHEMICAL FEED LINES SHALL BE ROUTED WITH CHEMICAL/CORROSION RESISTANT PIPE HANGERS/SUPPORTS AND HARDWARE ALONG CEILING OR WALLS UPON EXITING EQUIPMENT UNTIL DROP TO POINT OF APPLICATION OR EXIT FROM BUILDING. ALL PIPING SHALL BE RUN IN NON-OBSTRUCTIVE MANNER AND SHALL BE RIGIDLY SUPPORTED. REFER TO SPEC SECTION 11290 FOR PIPE SUPPORT REQUIREMENTS. PIPE SUPPORT INSIDE CHEMICAL FEED ROOMS SHALL BE FRP WITH PVC/FRP ENCAPSULATED S.S. HARDWARE. PIPE SUPPORTS OUTSIDE CHEMICAL FEED ROOMS SHALL BE STAINLESS STEEL WITH S.S. HARDWARE.
- REFER TO TECHNICAL SPECIFICATIONS FOR EXIST. CHEMICAL FEED EQUIPMENT UPGRADE REQUIREMENTS.
- ALL WALL PENETRATIONS FOR CHEMICAL FEED PIPING SHALL BE CORE DRILLED, INSTALL LINK SEAL AND NON-SHRINK GROUT BOTH SIDES.
- EQUIPMENT MOUNTING HEIGHTS SHALL BE COORDINATED WITH OWNER AND IN ACCORDANCE WITH MANF. RECOMMENDATIONS.



### CHLORINE FEED ROOM - NORTH ELEVATION

SCALE: NTS



### FLUORIDE FEED ROOM - NORTH ELEVATION

SCALE: NTS



THIS RECORD DOCUMENT HAS BEEN PREPARED BASED ON INFORMATION PROVIDED BY THE CONSTRUCTION CONTRACTOR. GRW ENGINEERS, INC. HAS ATTEMPTED TO VERIFY THE ACCURACY AND/OR COMPLETENESS OF THIS INFORMATION BUT SHALL NOT BE RESPONSIBLE FOR ANY ERRORS OR OMISSIONS WHICH MAY BE INCORPORATED HEREIN AS A RESULT.

**GRW**  
engineering | architecture | geospatial

ENGINEER/ARCHITECT: **Darren S. Wells**

CONSTRUCTION COMPANY: **Mitchell & Stark Const. Co., Inc.**

DATE: **FEBRUARY 2014**

EXISTING TREATMENT PLANT BUILDING CHEMICAL FEED SCHEMATIC AND ELEVATIONS HOOSIER HILLS REGIONAL WATER DISTRICT CONTRACTS G-1 & G-5					CLIENT CONTRACT NO. G-1/G-5			GRW PROJECT NO. 3235-04			
					DRAWING SCALE CHECK: 			THIS MARK SHOULD MEASURE EXACTLY 1" WHEN PLOTTED			
					ALL RIGHTS RESERVED: THIS DOCUMENT IS THE PROPERTY OF GRW, INC. AND SHALL NOT BE REPRODUCED IN WHOLE OR IN PART OR USED FOR CONSTRUCTION OF OTHER THAN THIS SPECIFIC PROJECT WITHOUT WRITTEN PERMISSION OF GRW, INC.						
 engineering   architecture   geospatial								DESIGNED: DSW		DATE: FEBRUARY 2012	
								DRAWN: JAJ		SCALE: N.T.S.	
					1 AS-BUILTS			2/14 JAJ		SHEET NO.	
					NO. DESCRIPTION			DATE BY		REVIEWED: DRC	
					REVISIONS					APPROVED: DSW	
					This document, originally issued, sealed, and signed by Darren S. Wells, Indiana Professional Engineer, No. 10100200, on March 26, 2012, shall not be used in lieu of a certified document.			M-05			