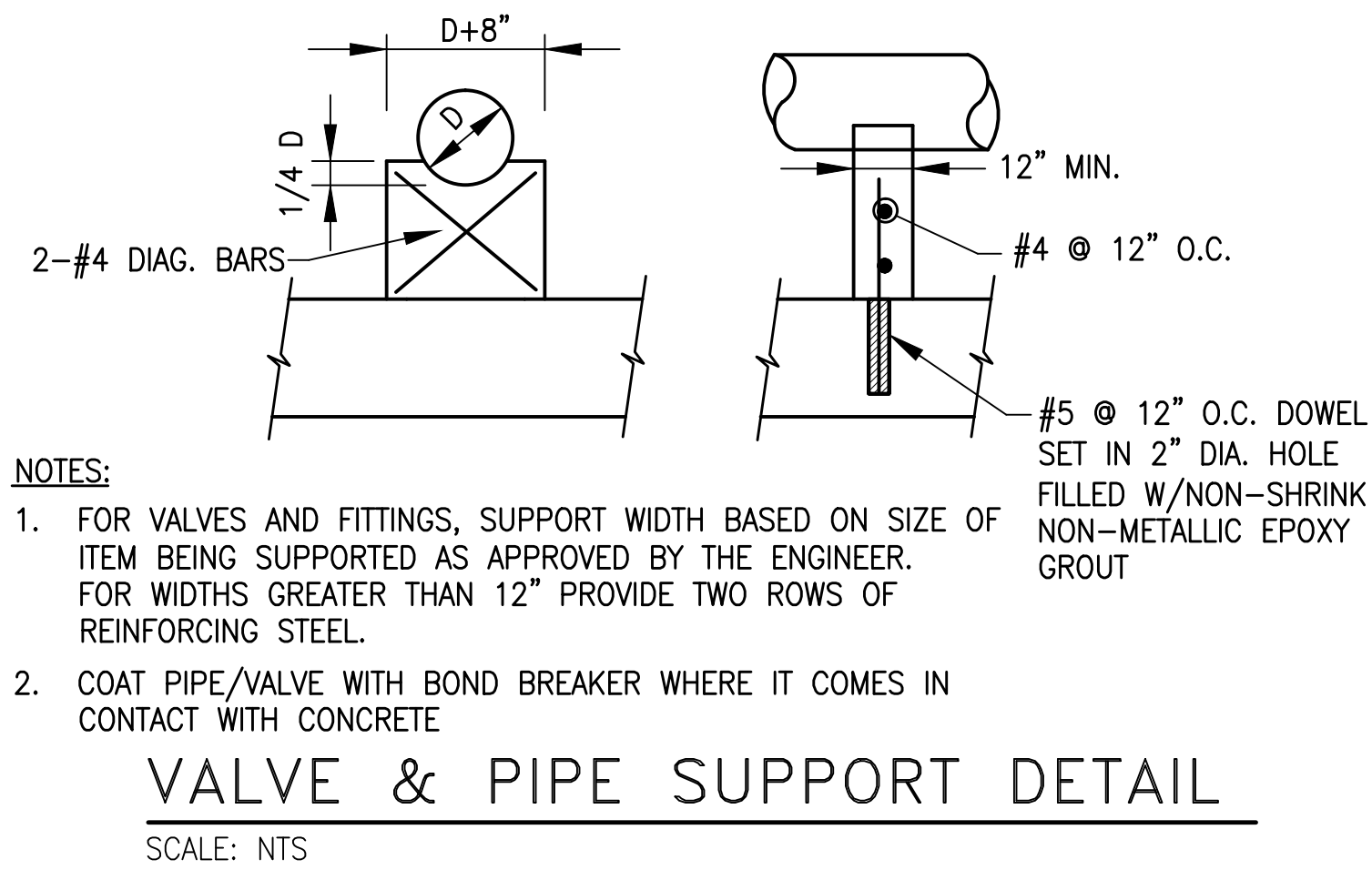
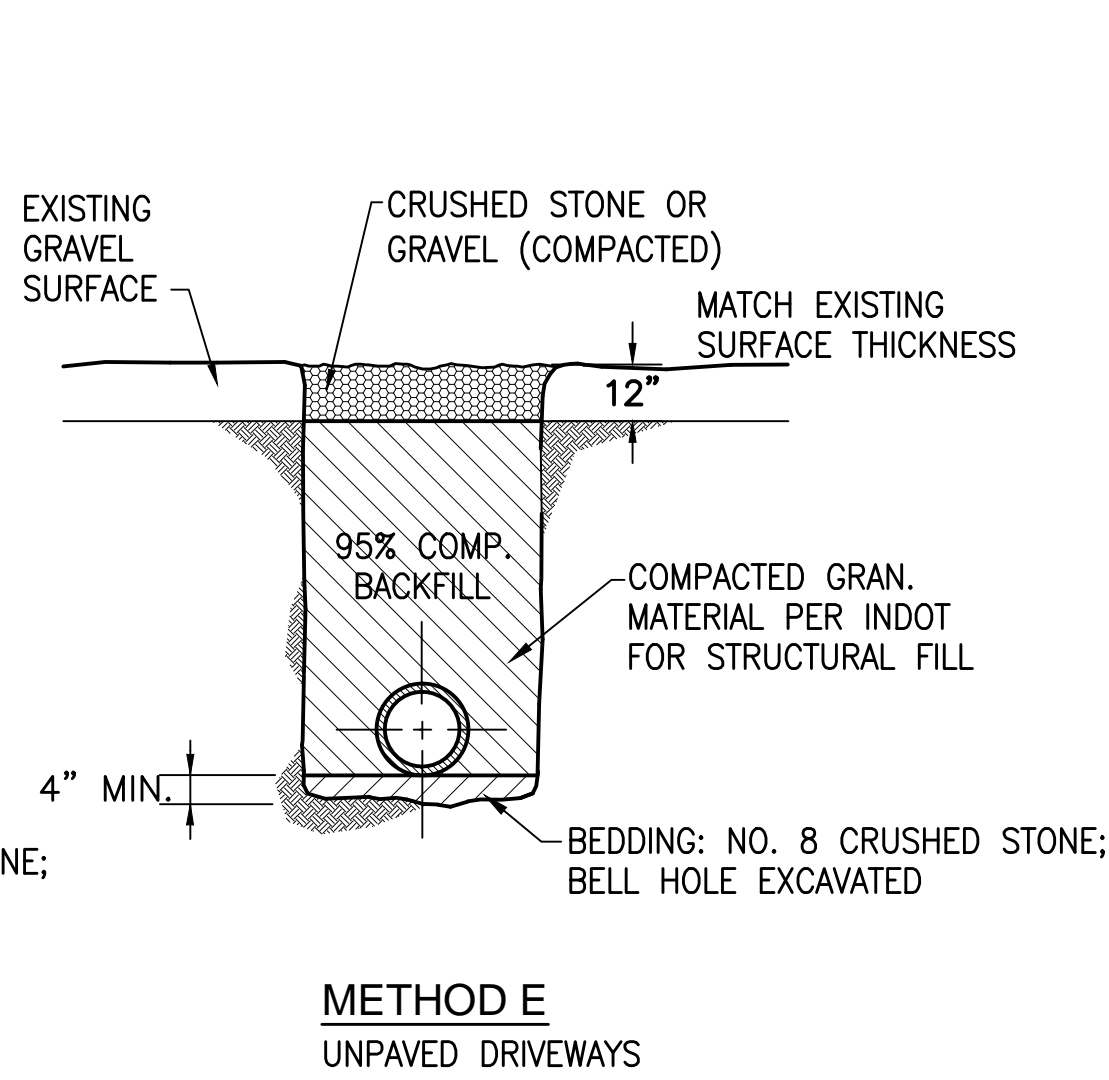
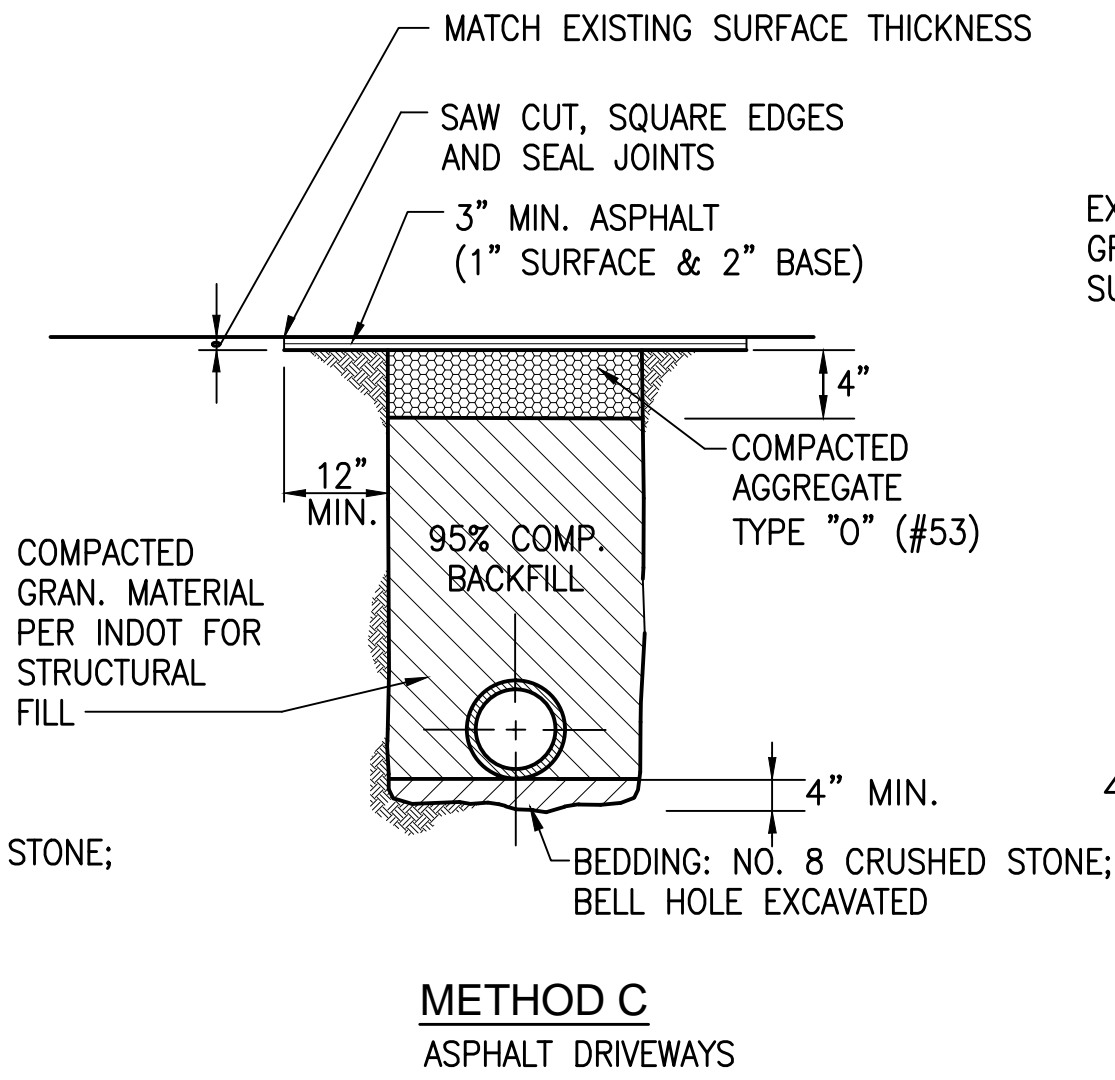
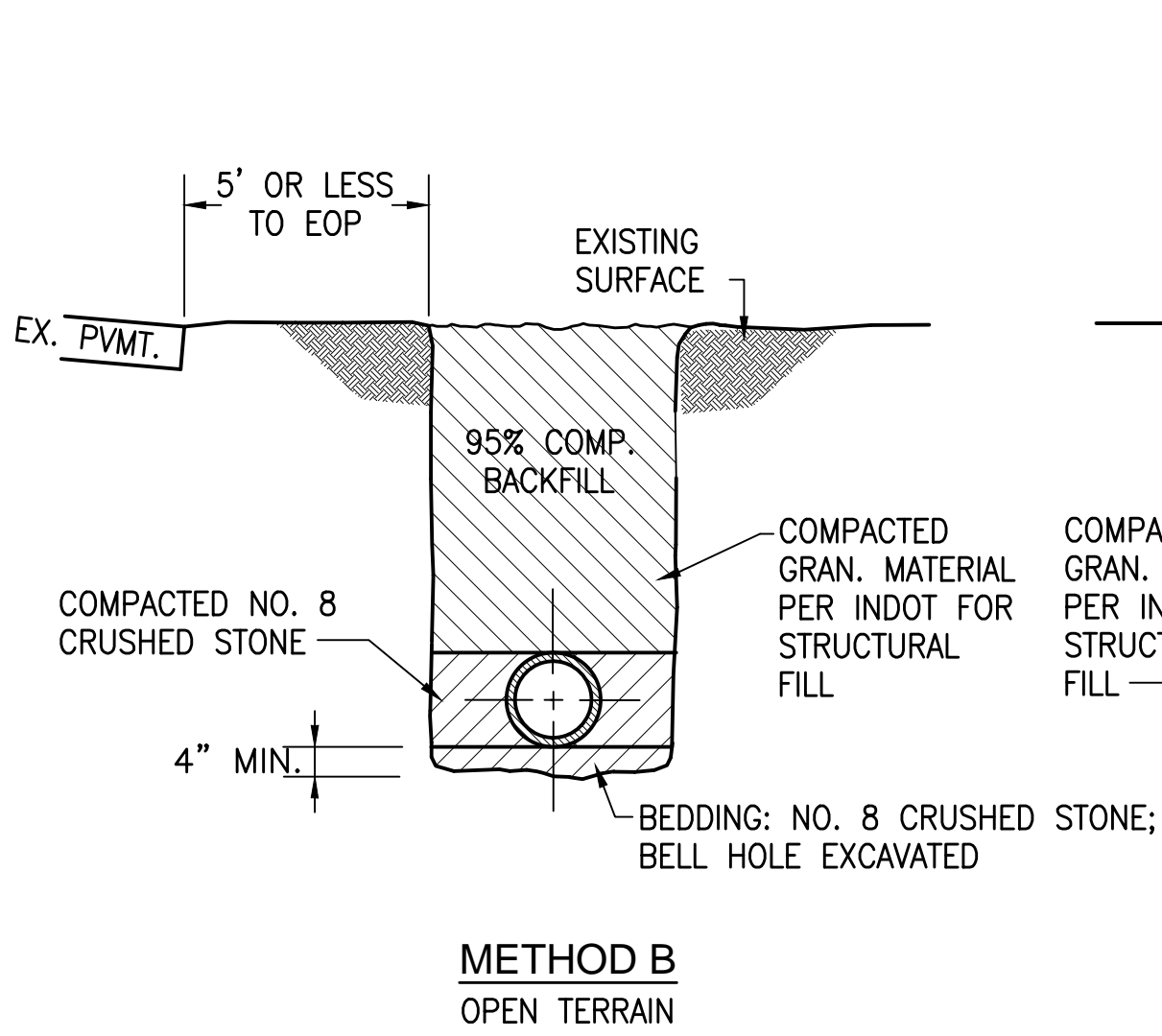
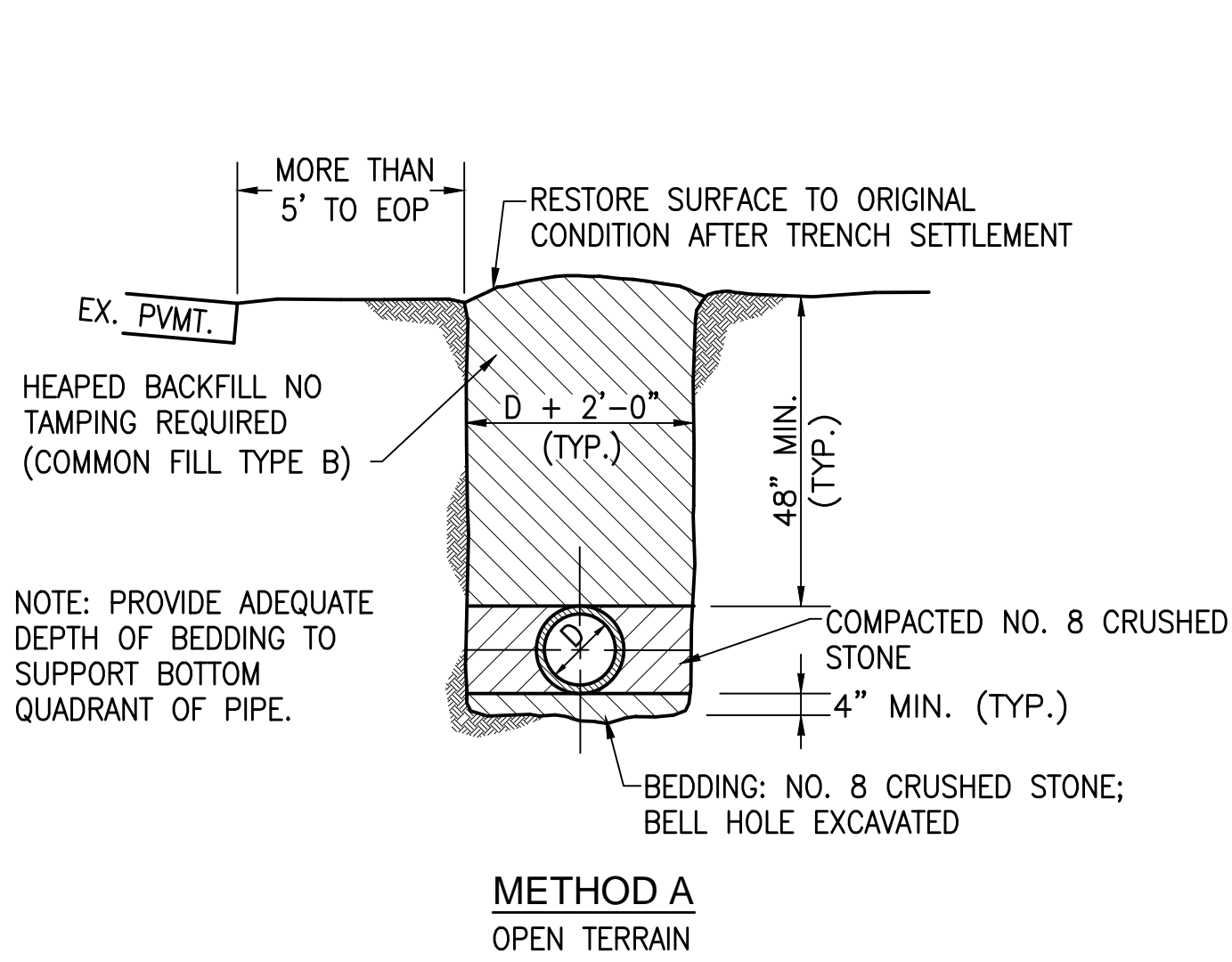


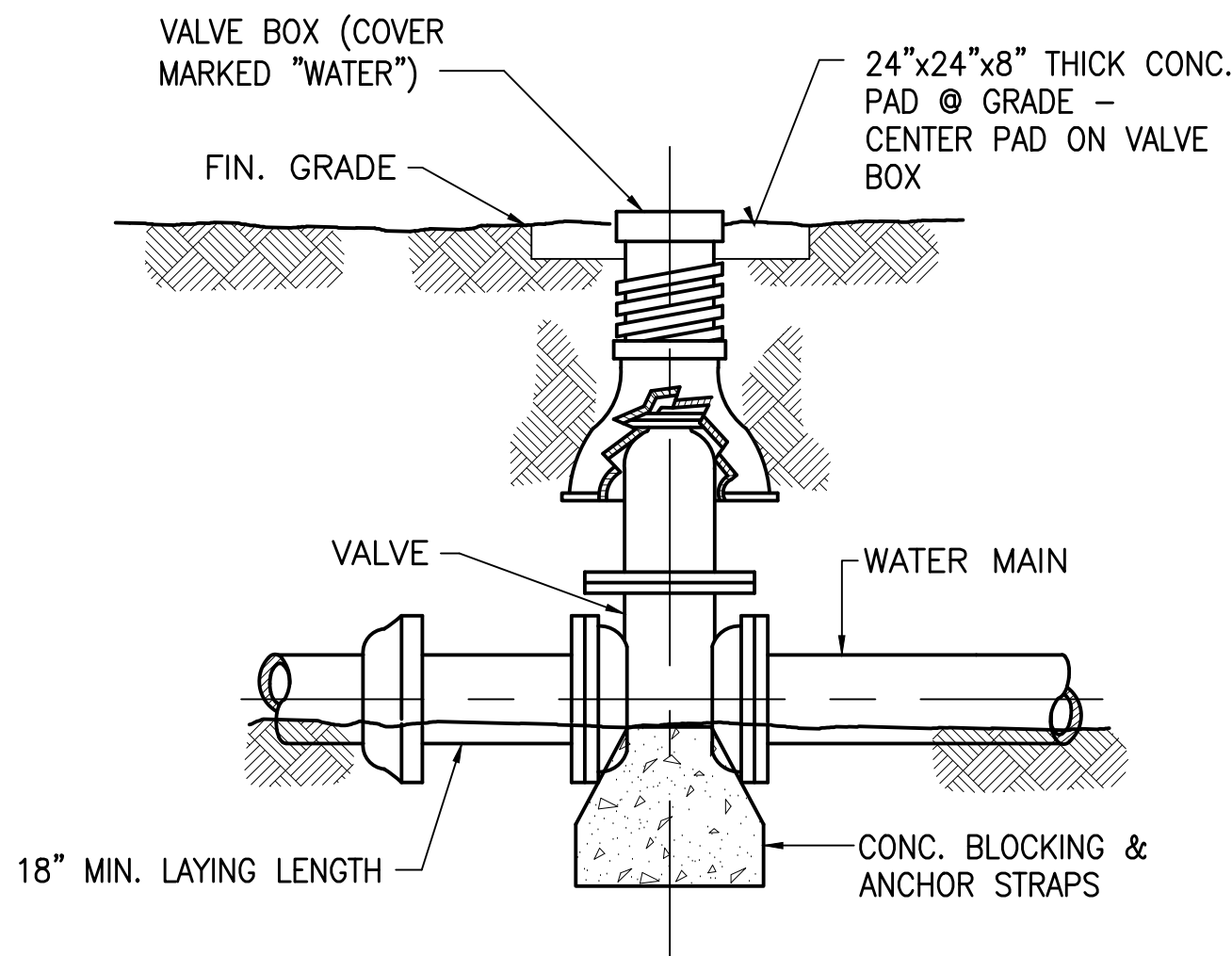
PRINTED: 2/25/2014 @ 9:57AM

FILE NAME: I:\3235 - HHRWD - Division G\Drawn\Design\G-1\Drawn\3235-G-1-C-07.dwg



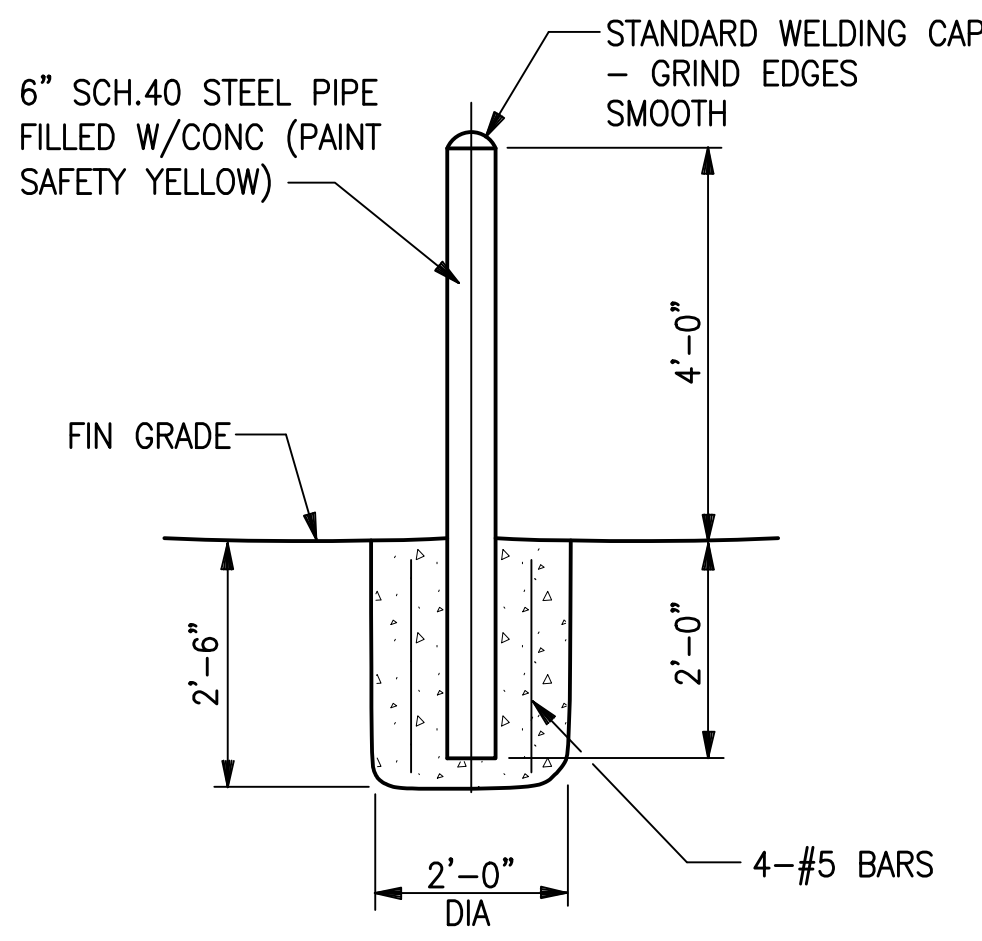
BEDDING / BACKFILL / PAVEMENT REPLACEMENT DETAILS

SCALE: NTS



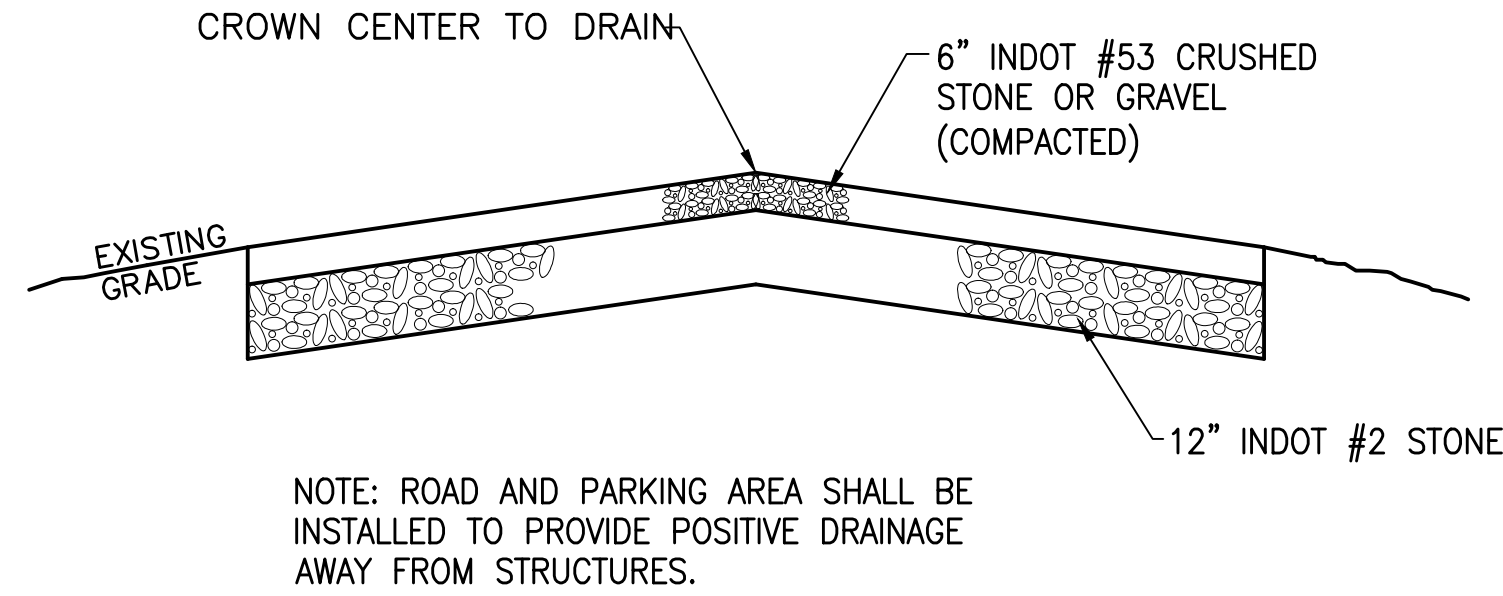
TYPICAL WATER VALVE SETTING

SCALE: NTS



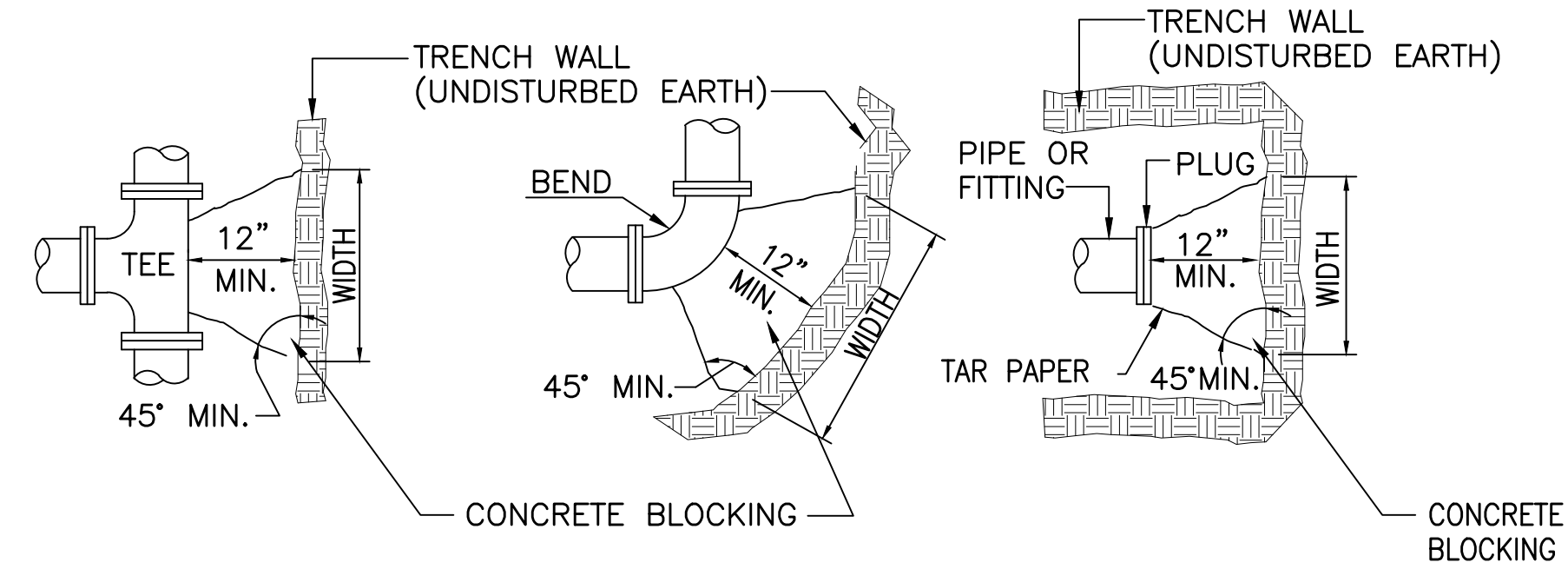
PIPE BOLLARD DETAIL

SCALE: NTS



ACCESS DRIVE & PARKING AREA DETAIL

SCALE: NTS



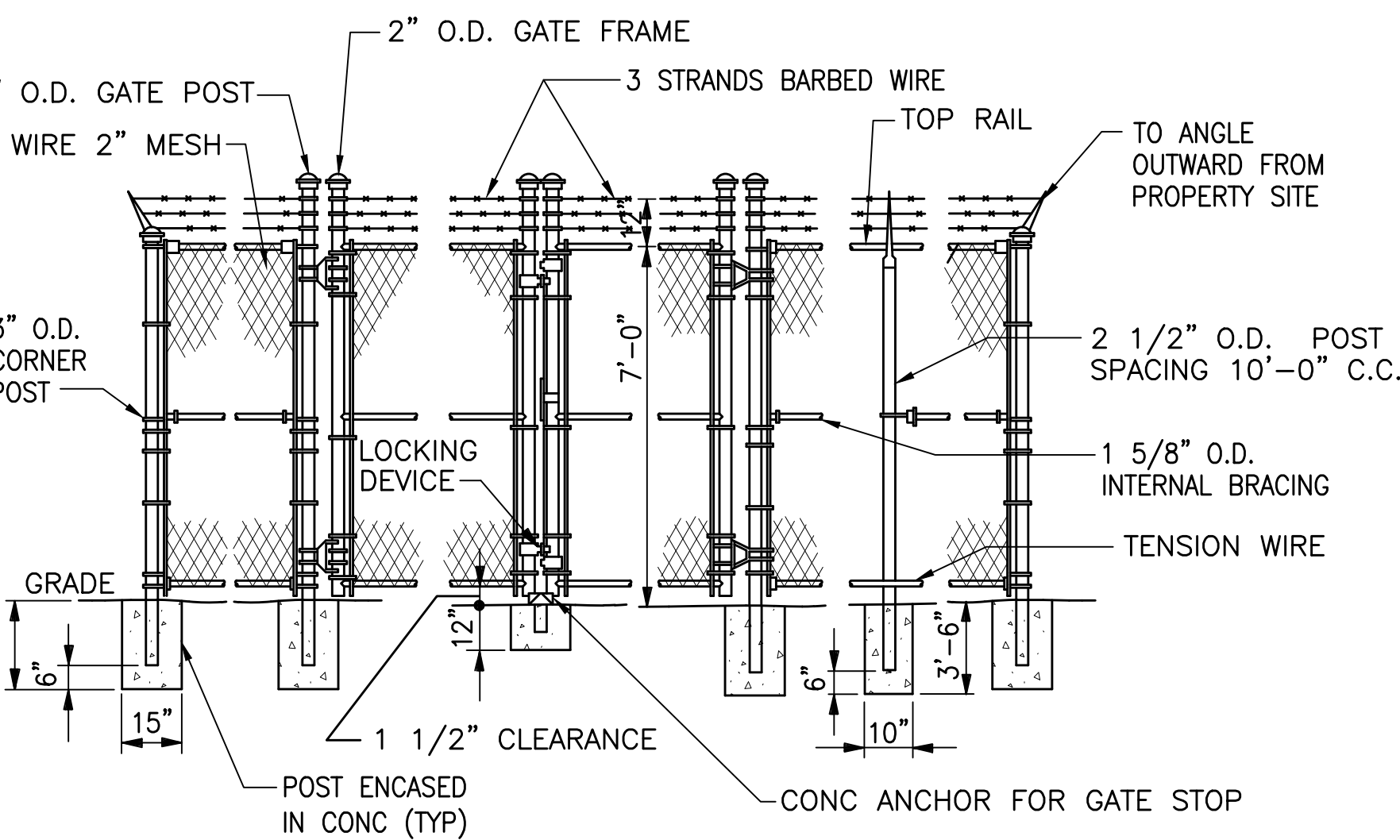
	TEE		22 1/2'		45'		90'		PLUG	
SIZE	W	D	W	D	W	D	W	D	W	D
3", 4"	2'-6"	1'-0"	1'-0"	9"	1'-6"	1'-3"	2'-9"	1'-3"	1'-6"	1'-6"
6"	3'-3"	1'-6"	2'-0"	1'-0"	2'-6"	1'-6"	4'-3"	1'-6"	2'-3"	2'-3"
8"	4'-3"	2'-0"	2'-0"	1'-9"	3'-9"	1'-9"	6'-0"	2'-0"	3'-0"	3'-0"
10"	5'-3"	2'-6"	3'-0"	1'-9"	4'-0"	2'-6"	7'-3"	2'-6"	3'-9"	3'-9"
12"	6'-0"	3'-0"	3'-6"	2'-0"	4'-9"	3'-6"	7'-9"	3'-0"	4'-3"	4'-3"

NOTES:

- CONCRETE REACTION BLOCKING SHALL NOT COVER PIPE JOINTS, BOLTS, OR GLANDS.
- CONCRETE SHALL HAVE A COMPRESSIVE STRENGTH OF NOT LESS THAN 3000 PSI AFTER 28 DAYS.
- WRAP D.I. FITTINGS WITH 8 MIL POLYETHYLENE ENCASUREMENT.
- THRUST BLOCKING SHALL BE USED ONLY WHERE NOTED ON THE DRAWINGS AND SHALL NOT BE CONSIDERED A SUBSTITUTE/REPLACEMENT FOR RESTRAINED JOINT PIPE AND FITTINGS.
- CONSULT ENGINEER FOR ADDITIONAL PIPE SIZES.

TYPICAL WATER MAIN REACTION BLOCKING

SCALE: NTS

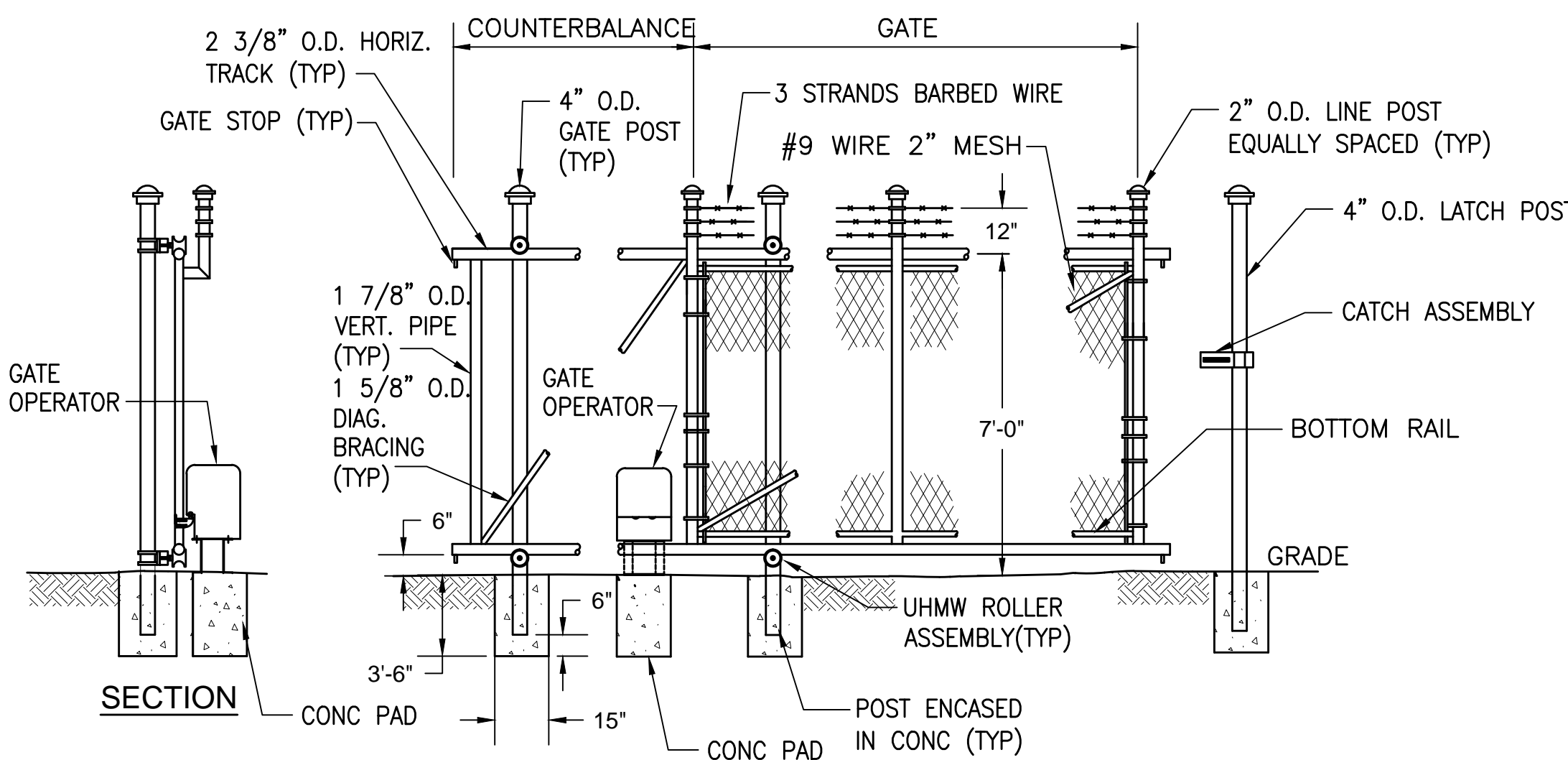


NOTES:

- FOR GATE (CLEAR) OPENING SIZES, SEE SITE PLAN.
- GATES SHALL BE FURNISHED WITH HASP, PADLOCK AND RELATED HARDWARE.

CHAIN LINK SECURITY FENCE & SWINGING GATE

SCALE: NTS



NOTES:

- FOR GATE (CLEAR) OPENING SIZES, SEE SITE PLAN.
- MANUAL GATES SHALL BE FURNISHED WITH HASP, PADLOCK AND RELATED HARDWARE.
- GATE OPERATOR SHALL BE PROVIDED FOR PLANT MAIN ENTRY GATE ONLY.

CHAIN LINK SLIDING GATE DETAIL

SCALE: NTS

STANDARD DETAILS				CLIENT CONTRACT NO. G-1/G-5		GRW PROJECT NO. 3235-04			
HOOSIER HILLS REGIONAL WATER DISTRICT CONTRACTS G-1 & G-5				DRAWING SCALE CHECK: <input type="checkbox"/> THIS MARK SHOULD MEASURE EXACTLY 1" WHEN PLOTTED					
ALL RIGHTS RESERVED: THIS DOCUMENT IS THE PROPERTY OF GRW, INC. AND SHALL NOT BE REPRODUCED IN WHOLE OR IN PART OR USED FOR CONSTRUCTION OF OTHER THAN THIS SPECIFIC PROJECT WITHOUT WRITTEN PERMISSION OF GRW, INC.				DESIGNED: DSW DRAWN: JAJ REVIEWED: DRC APPROVED: DSW		DATE: FEBRUARY 2012 SCALE: N.T.S. SHEET NO. C-07			
1 AS-BUILTS				2/14 JAJ					
NO. DESCRIPTION				DATE BY					
REVISIONS									