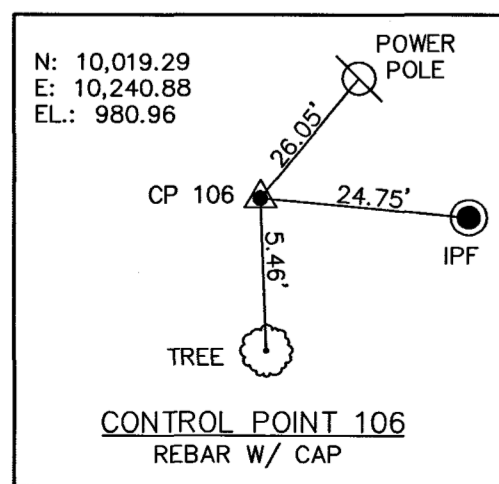
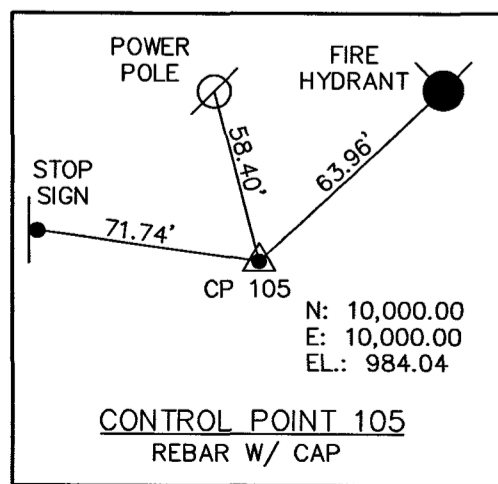
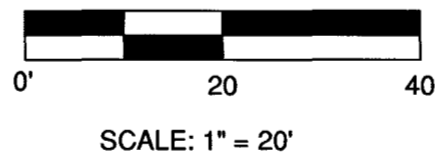


SITE PLAN
SCALE: 1" = 20'



"DON'T DIG BLIND"



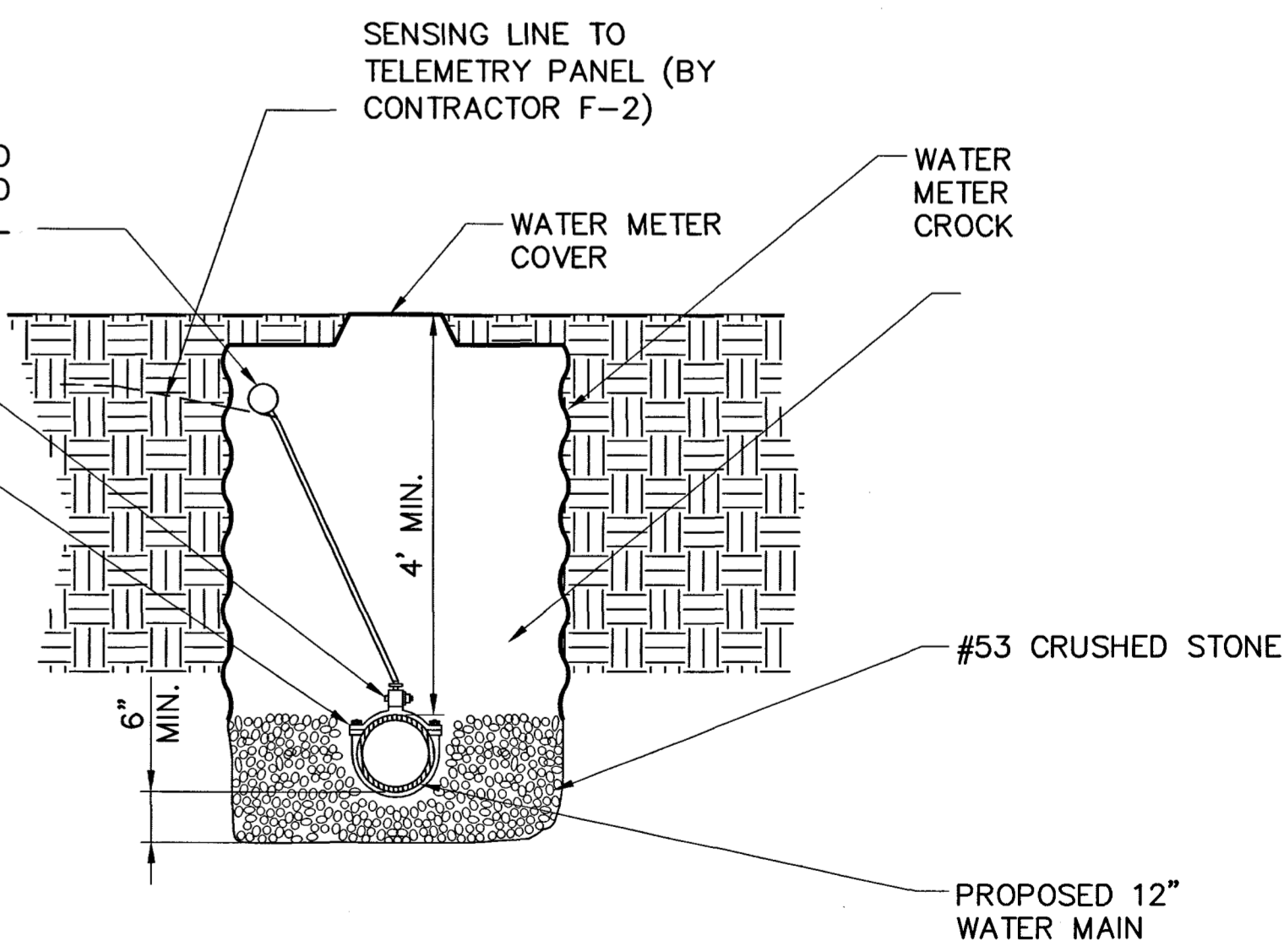
CALL TWO WORKING DAYS
BEFORE YOU DIG
IT'S THE LAW
1-800-382-5544

RECORD DRAWING

This drawing has been revised from the original contract drawings to show minor/modifier changes made during construction. This drawing is not warranted to be complete and accurate in all respects.

GRW Engineers, Inc.

Date: 5/2004 By: MB

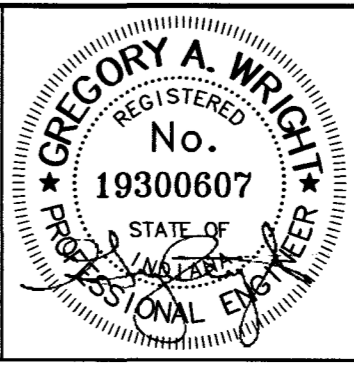


TRANSDUCER PIT DETAIL
NOT TO SCALE

- NOTES:
1. THE UTILITIES AND THEIR LOCATION SHOWN ON PLANS ARE APPROXIMATE. CONTRACTORS SHALL VERIFY ALL UTILITIES IN THE FIELD AND NOTIFY ALL UTILITIES IN THE FIELD AND NOTIFY ALL UTILITY COMPANIES PRIOR TO INSTALLATION OF THE WATER MAIN.
 2. ALL PIPING SHALL BE DUCTILE IRON PRESSURE CLASS 350 (UNLESS OTHERWISE NOTED).
 3. ENTIRE TANK SITE (ALL HHRWD PROPERTY) SHALL BE GRADED TO DRAIN SUCH THAT STANDING WATER WILL NOT REMAIN ON SITE.
 4. ENTIRE TANK SITE (ALL HHRWD PROPERTY) NOT UNDER GRAVEL SHALL BE SEEDED.
 5. CONTRACTOR SHALL EMPLOY ALL SOIL EROSION PREVENTABLE MEASURES IN ORDER TO KEEP ALL SOIL ON SITE.

NO.	DESCRIPTION	DATE	BY
1	AS-BUILT DRAWING	5/2004	MB
REVISIONS			

HOOSIER HILLS REGIONAL WATER DISTRICT	
DIVISION "F" WATERWORKS SYSTEM IMPROVEMENTS CONTRACT F-3	
SOUTH MILAN TANK SITE PLAN	
GRW PROJECT NO. 2745-04	



GRW Engineers, Inc.
Engineers, Architects, Planners
INDIANAPOLIS, INDIANA
LOUISVILLE & LEXINGTON, KENTUCKY
CINCINNATI, OHIO
NASHVILLE, TENNESSEE
ARLINGTON, TEXAS

DRAWN: BJD	DATE: JULY 2002
FILE NAME: SHT.596	SCALE: 1"=20'
CHECKED: -	SHEET NO. 596
APPROVED: -	