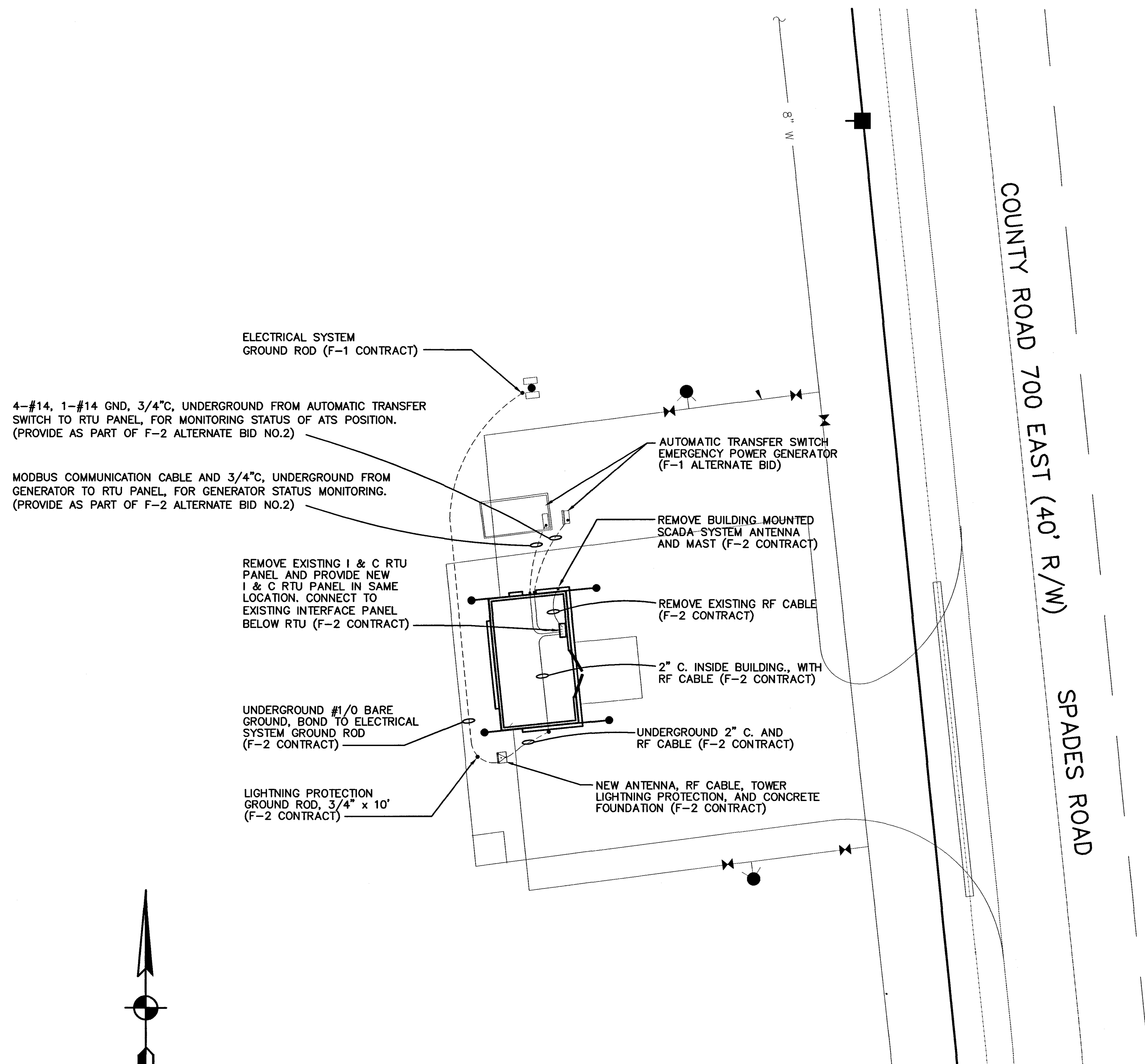
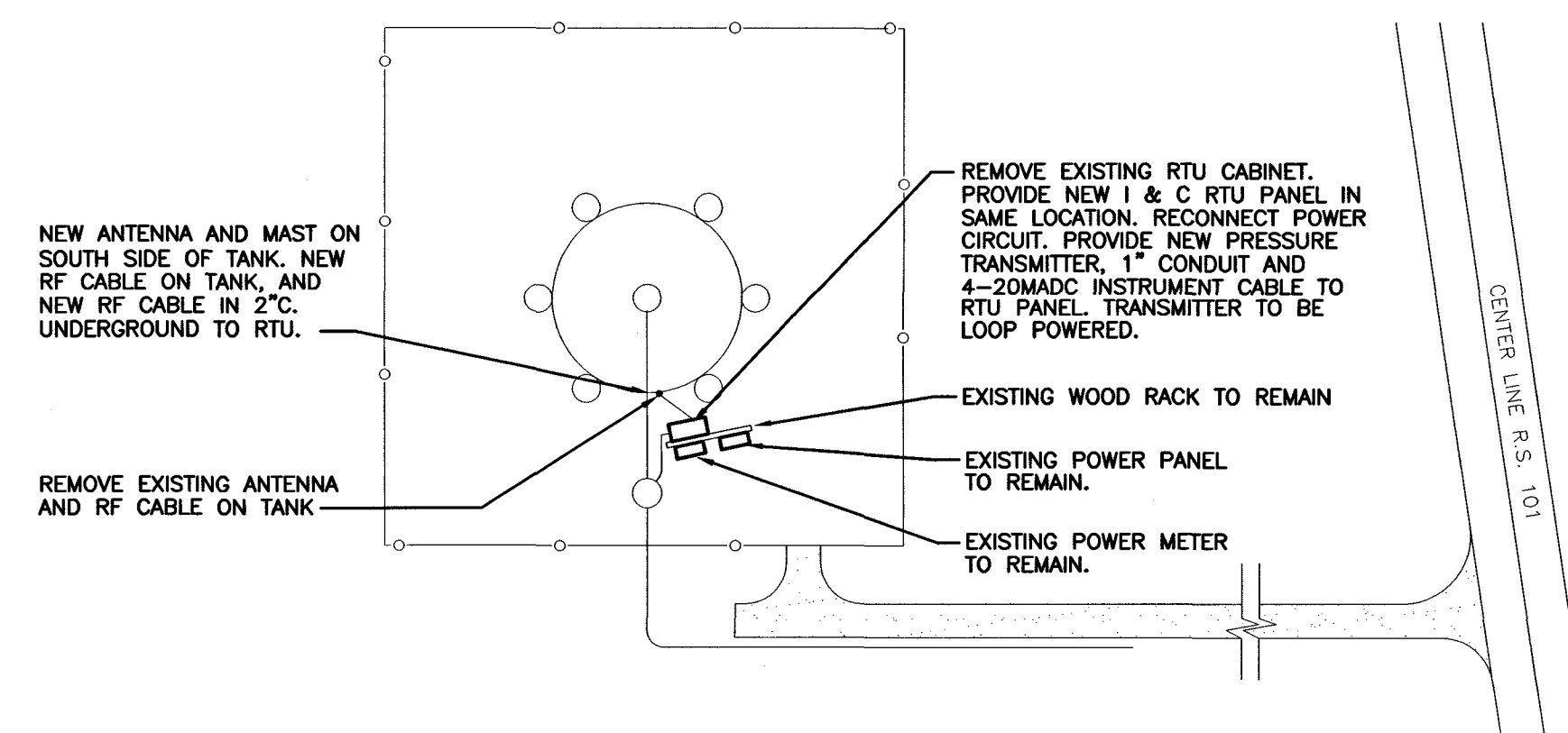


I:\2745\dwg\JWS - IDEM Elec Submittal\FINAL SET NO-3 July 3, 2002 Set of Dwg and Spades Road and Spades Road F2 ELEC DWG\F2A-Built\_Drawing\F2E8\_REvised.dwg, 11/15/2004 11:26:53 AM



SPADES ROAD I AND C SITE PLAN

SCALE: 1" = 10'



PENNTOWN TANK ELECTRICAL SITE PLAN

SCALE: 1" = 10' APPROXIMATELY

ALL WORK INDICATED IS PART OF F-2 CONTRACT.

NOTES:

**J. W. SIMS & ASSOCIATES**  
ENGINEERING COMPANY  
1545 COUNTRY CLUB ROAD  
INDIANAPOLIS, INDIANA 46234  
(317) 209-4035 (FAX) 209-4035

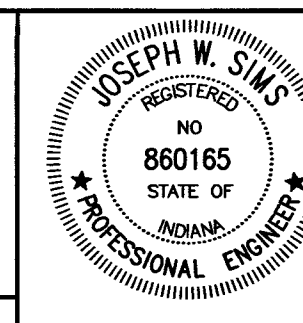
NO.	DESCRIPTION	DATE	BY
1	AS BUILT REVISION	5/2004	GCR
REVISIONS			

HOOSIER HILLS REGIONAL WATER DISTRICT  
DIVISION "F" WATERWORKS SYSTEM IMPROVEMENTS  
CONTRACT F-2

SPADES ROAD  
I AND C SITE PLAN AND DETAILS

GRW PROJECT NO. 2745

JWSA PROJECT NO. 2001-05



**GRW Engineers, Inc.**  
Engineers, Architects, Planners  
INDIANAPOLIS, INDIANA  
LOUISVILLE & LEXINGTON, KENTUCKY  
CINCINNATI, OHIO  
NASHVILLE, TENNESSEE  
ARLINGTON, TEXAS

DRAWN: JWS	DATE: NOVEMBER, 2001
FILE NAME: F2-E8_REVISID.DWG	SCALE: AS NOTED
CHECKED: JWS	SHEET NO. E8/589
APPROVED: JWS	