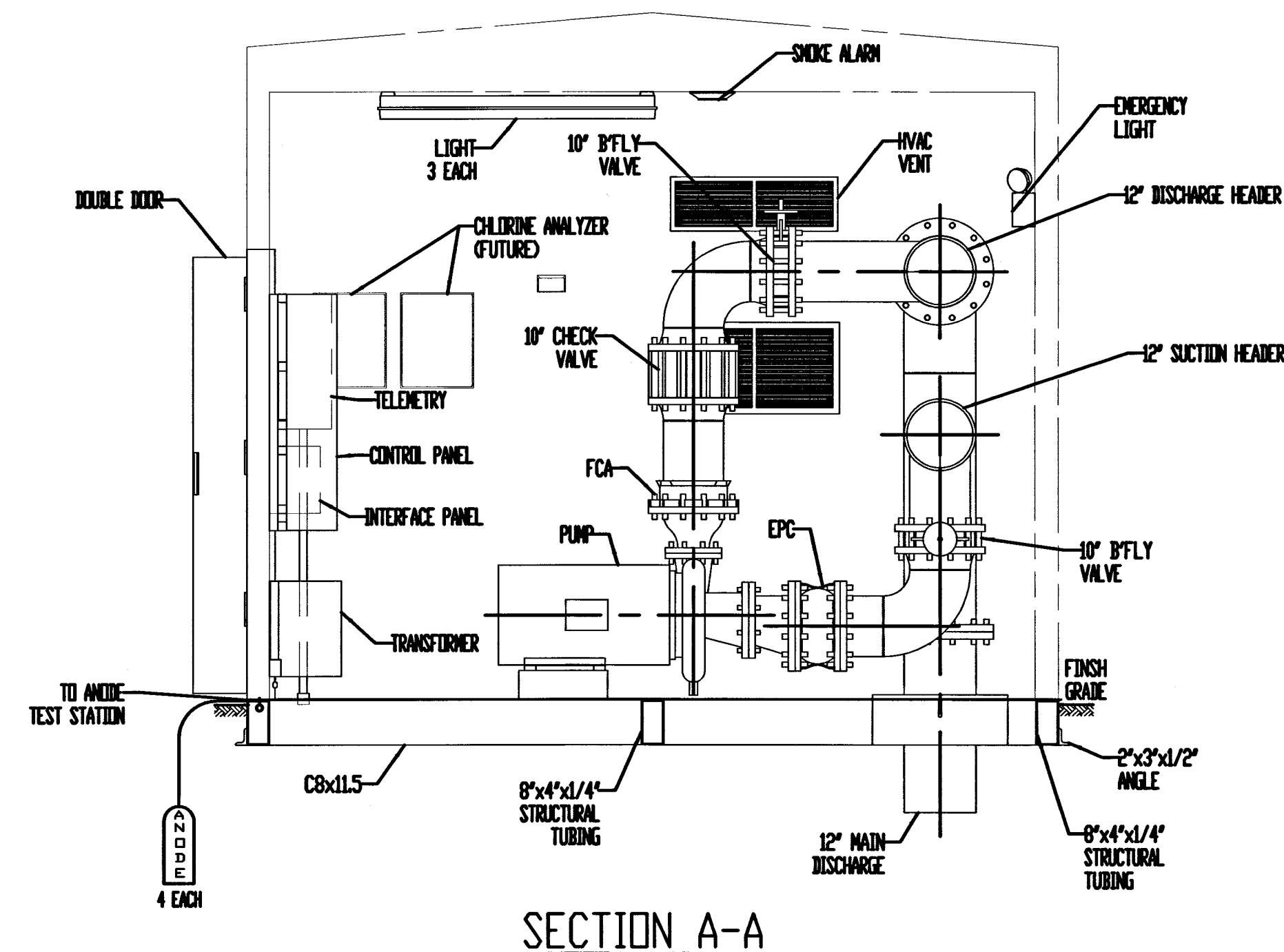


SECTION B-B



SECTION A-A

GENERAL NOTES

CONTRACTOR'S NOTE:

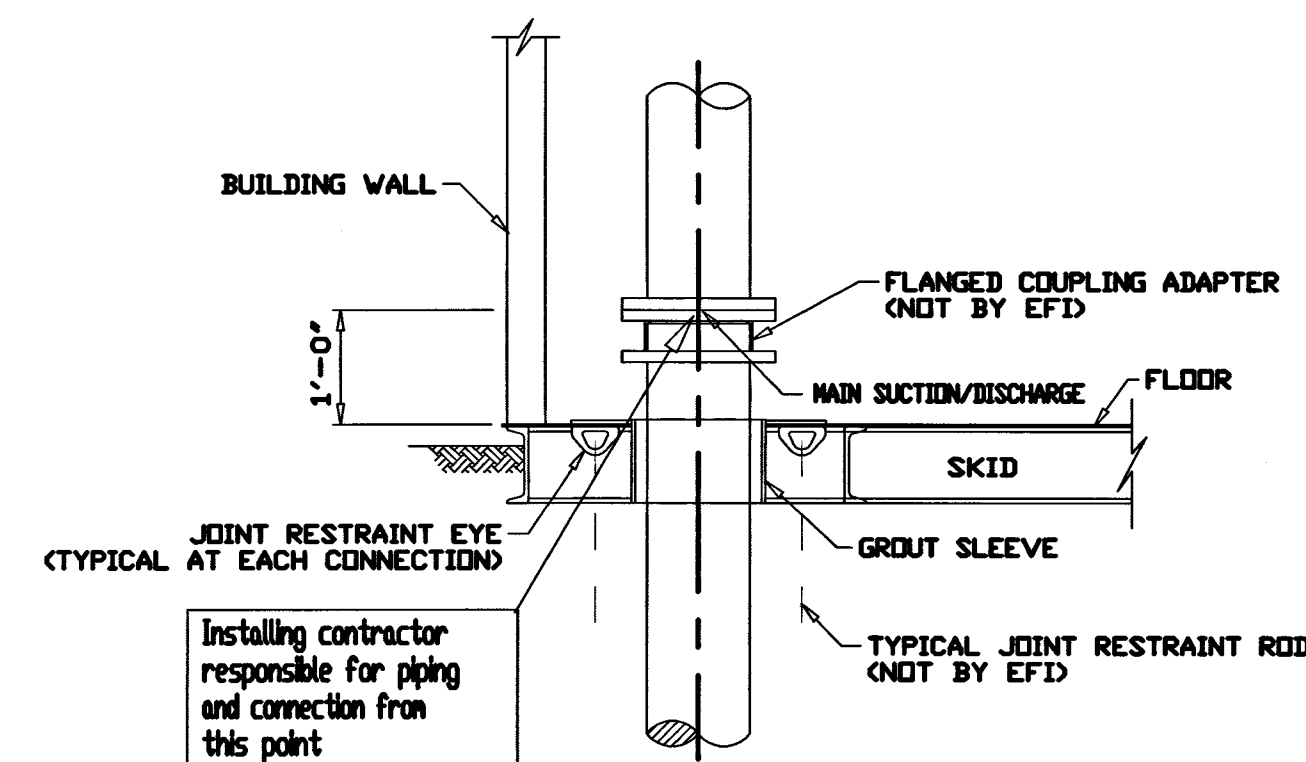
SCHEDULE 40 STEEL PIPE
MAIN SUCTION: 14.000" O.D.
MAIN DISCHARGE: 12.750" O.D.

ALL PIPING AND EQUIPMENT
WILL BE ADEQUATELY
SUPPORTED AND BRACED

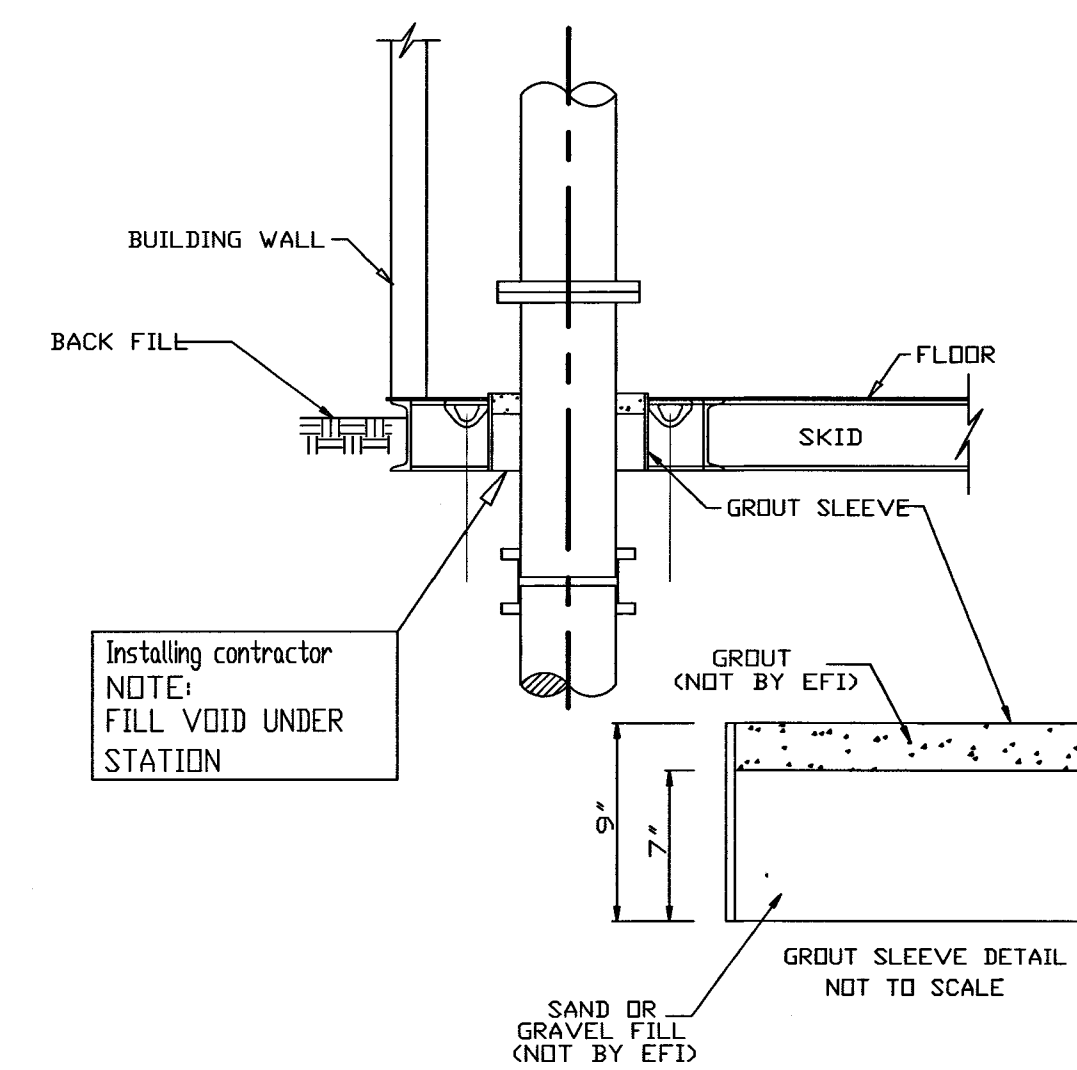
DEHUMIDIFIER MUST BE POWERED
UP AND TURNED ON IMMEDIATELY
AFTER THIS STATION IS SET IN PLACE

STRUCTURAL STEEL: ASTM A-36

STRUCTURAL TUBING: A500, GRADE B



OPTIONAL
PIPE CONNECTION



TYPICAL GROUT DETAIL

DESIGN CRITERIA

CONTROLS: TELEMETRY

POWER SERVICE: 480 VOLTS, 3 PHASE, 60 CYCLE

PUMP DATA

TYPE: HORIZ., CLOSE CPLD., END SUCTION

PUMP: 1 & 2 (PRESENT)

CAPACITY: 925 G.P.M. AT 68 FEET T.D.H.
SIZE: 5" x 8" x 13"
MOTOR: 75 H.P., 1800 R.P.M.

PUMP: 1 & 2 (FUTURE)

CAPACITY: 1500 G.P.M. AT 155 FEET T.D.H.
SIZE: 5" x 8" x 13"
MOTOR: 75 H.P., 1800 R.P.M.

RECORD DRAWING

This drawing has been revised from the original contract drawings to show minor/ major changes made during construction. This drawing is not warranted to be complete and accurate in all respects.

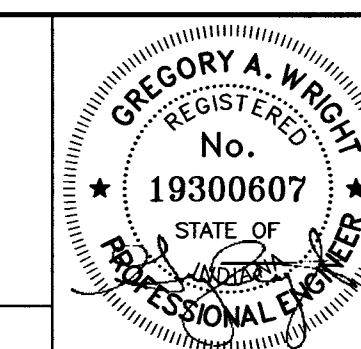
GRW Engineers, Inc.

Date: 5/2004 By: MSB

NOTES:
1. Plans were not field issued. Other than Suction Line diameter, no other dimensions have been field verified.

NO.	DESCRIPTION	DATE	BY
1	AS-BUILT REVISIONS	2003	MSB
REVISIONS			

HOOSIER HILLS REGIONAL
WATER DISTRICT
DIVISION "F" WATERWORKS SYSTEM IMPROVEMENTS
DELETION OF OSGOOD SUPPLY
SPADES ROAD PUMP STATION PLAN
GRW PROJECT NO. 2745



GRW Engineers, Inc.
Engineers, Architects, Planners
INDIANAPOLIS, INDIANA
LOUISVILLE & LEXINGTON, KENTUCKY
CINCINNATI, OHIO
NASHVILLE, TENNESSEE
ARLINGTON, TEXAS

DRAWN: GCR	DATE: MAY 2003
FILE NAME: Sht.605.dwg	SCALE: 1/2"=1'
CHECKED:	SHEET NO.
APPROVED:	605