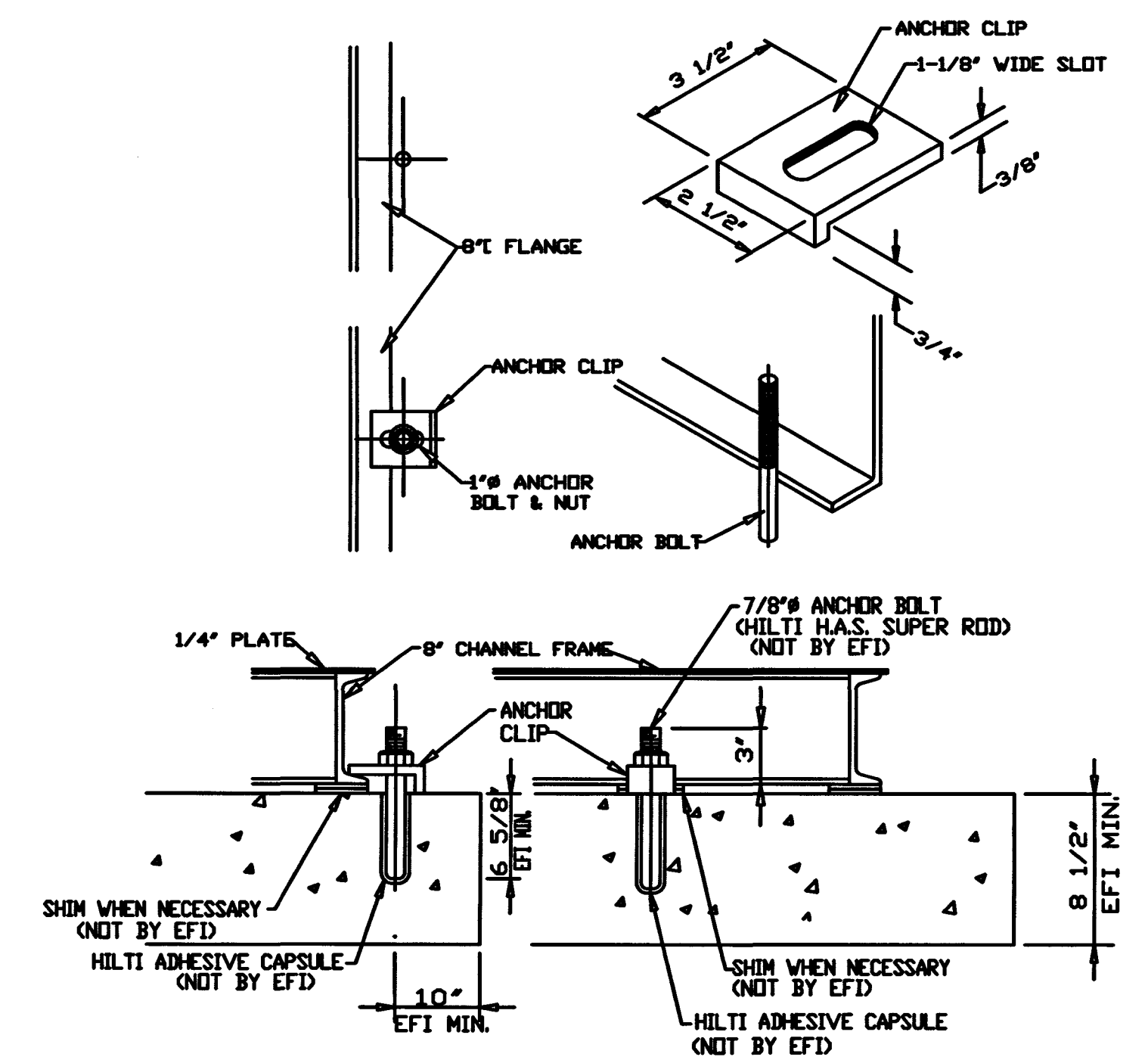


SKID PLAN



TYPICAL ANCHOR DETAIL

NOTE: ANCHOR CLIPS FURNISHED BY E.F.I.  
ANCHOR BOLTS AND NUTS BY INSTALLER  
FOUNDATION AND ANCHOR BOLT DESIGN AND DIMENSIONS  
AS DIRECTED BY ENGINEER

SHIMS MAY BE REQUIRED AROUND PERIMETER  
OF WATERSHED TO ENSURE PROPER LEVEL  
WITHOUT PROPER LEVEL ENGINEERED FLUID  
CANNOT BE RESPONSIBLE FOR PROPER DOOR OPERATION.

RECORD DRAWING

This drawing has been revised from the original contract drawings to show minor / major changes made during construction. This drawing is not warranted to be complete and accurate in all respects.

GRW Engineers, Inc.

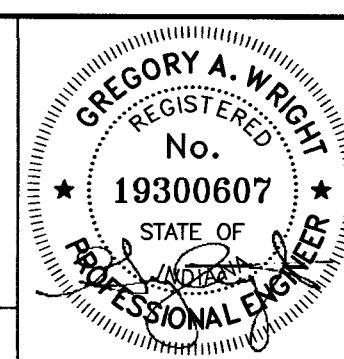
Date: 5/2004 By: MSB

NOTES:

NO.	DESCRIPTION	DATE	BY
1	AS-BUILT	5/2004	MSB
REVISIONS			

HOOSIER HILLS REGIONAL  
WATER DISTRICT  
DIVISION "F" WATERWORKS SYSTEM IMPROVEMENTS  
DELETION OF OSGOOD SUPPLY  
SPADES ROAD PUMP STATION PLAN

GRW PROJECT NO. 2745



**GRW Engineers, Inc.**  
Engineers, Architects, Planners  
INDIANAPOLIS, INDIANA  
LOUISVILLE & LEXINGTON, KENTUCKY  
CINCINNATI, OHIO  
NASHVILLE, TENNESSEE  
ARLINGTON, TEXAS

DRAWN: GCR	DATE: MAY 2003
FILE NAME: Sht.604.dwg	SCALE: 1/2"=1'
CHECKED:	SHEET NO.
APPROVED:	604