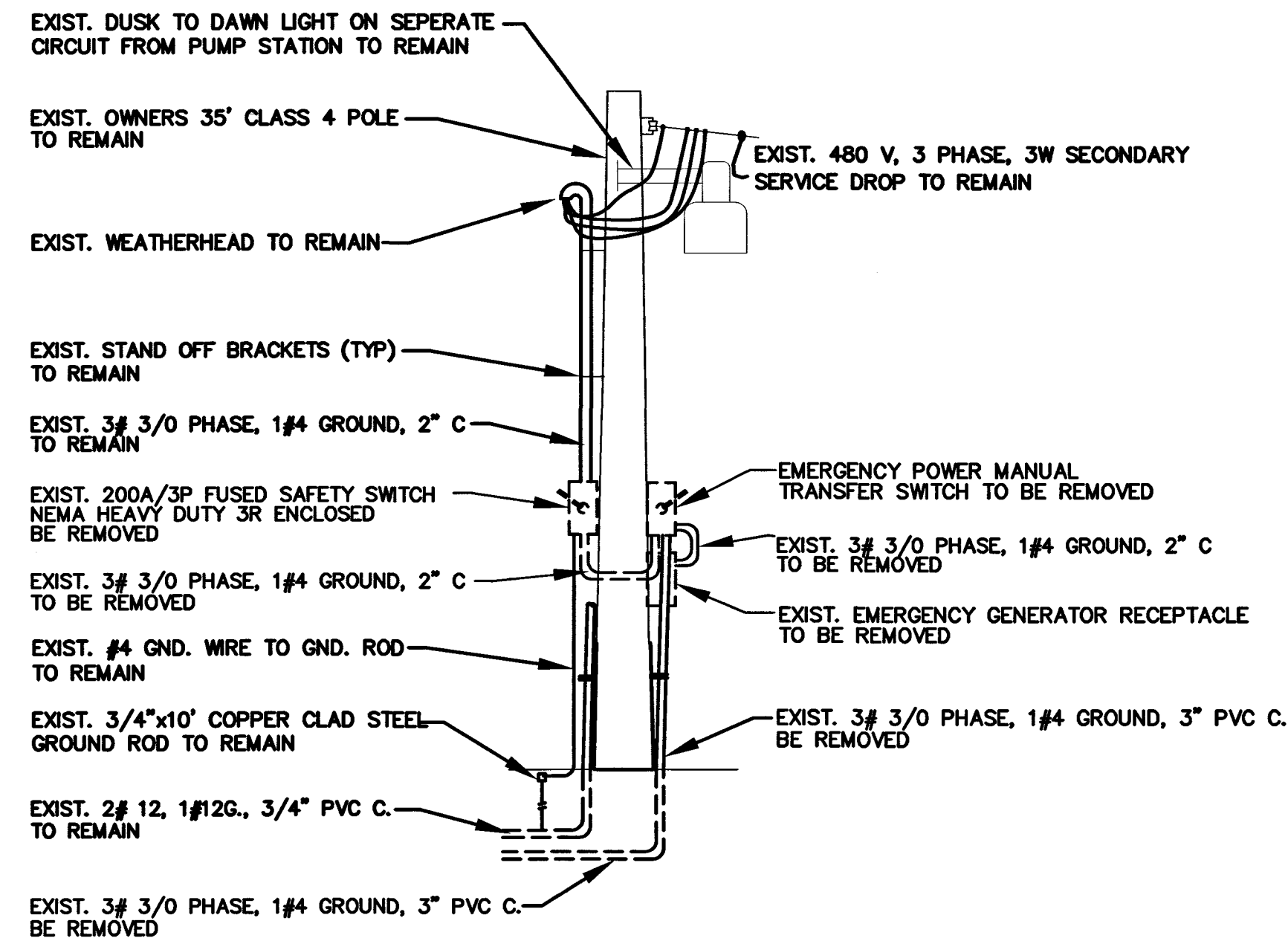
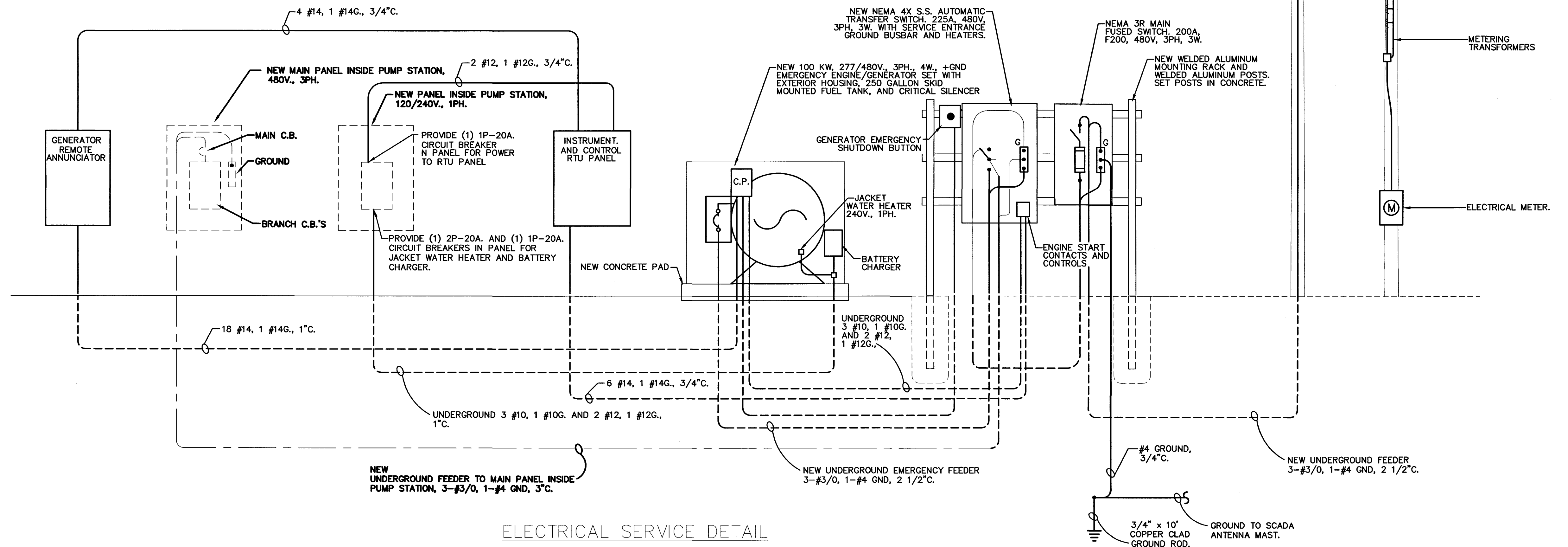


NEW WORK SERVICE POLE DETAIL  
SCALE: NONE



EXISTING SERVICE POLE REMOVAL DETAIL  
SCALE: NONE



ELECTRICAL SERVICE DETAIL  
SCALE: N.T.S.

NOTES:

**J. W. SIMS & ASSOCIATES ENGINEERING CO.**  
1545 COUNTRY CLUB ROAD  
INDIANAPOLIS, INDIANA 46234  
317-209-4035 FAX 209-4036  
EMAIL JWSIMS@JWSIMS.COM

NO.	DESCRIPTION	DATE	BY
3	AS-BUILT REVISION	10/2004	JWS
2	RENUMBERED	5/2004	GCR
1	AS-BUILT REVISION	5/2004	GCR

HOOSIER HILLS REGIONAL WATER DISTRICT  
DIVISION "F" WATERWORKS SYSTEM IMPROVEMENTS  
CONTRACT F-1  
SPADES ROAD PUMP STATION ELECTRICAL DETAILS  
GRW PROJECT NO. 2745 JWSA PROJECT NO. 2001-05

**GRW Engineers, Inc.**  
Engineers, Architects, Planners  
INDIANAPOLIS, INDIANA  
LOUISVILLE & LEXINGTON, KENTUCKY  
CINCINNATI, OHIO  
NASHVILLE, TENNESSEE  
ARLINGTON, TEXAS

DRAWN: JBK	DATE: JULY, 2002
FILE NAME: F1-E8_REVISD.DWG	SCALE: AS NOTED
CHECKED: JWS	SHEET NO.
APPROVED: JWS	E8/570