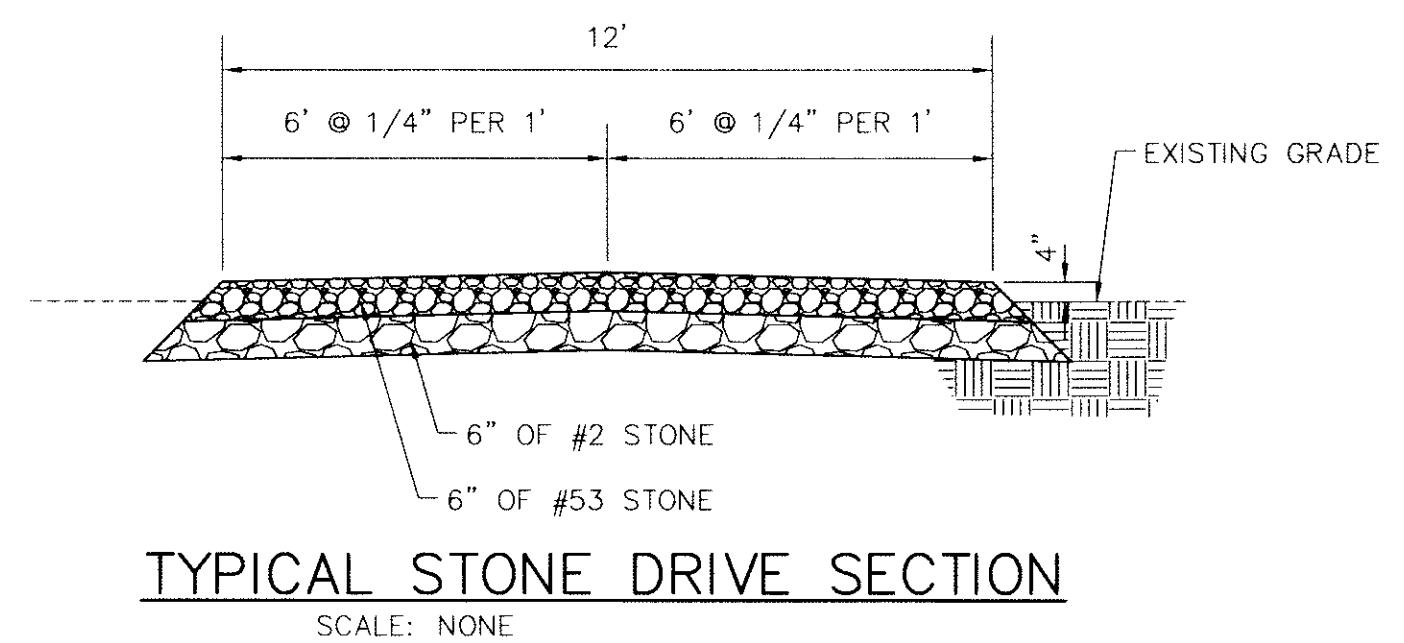
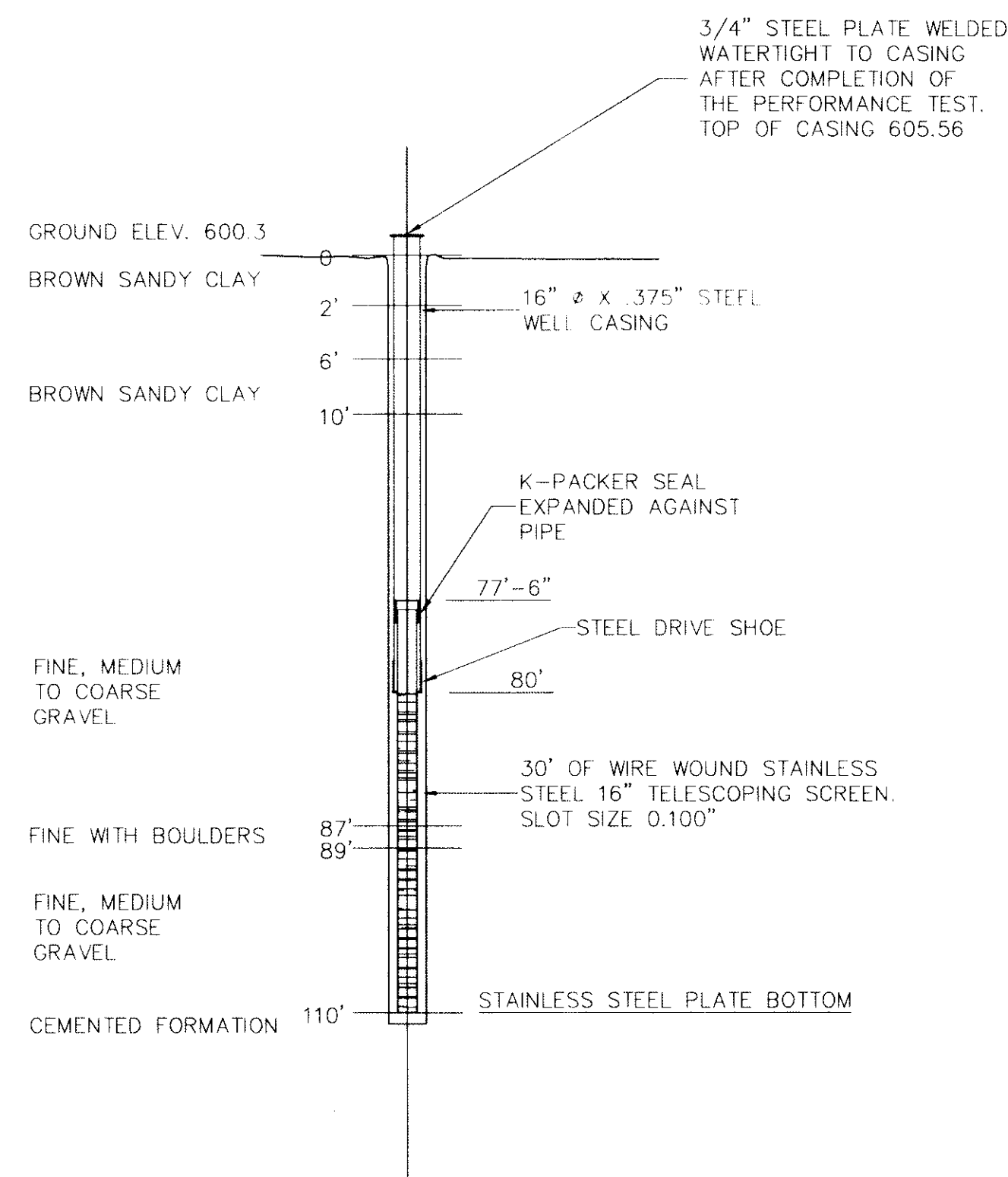
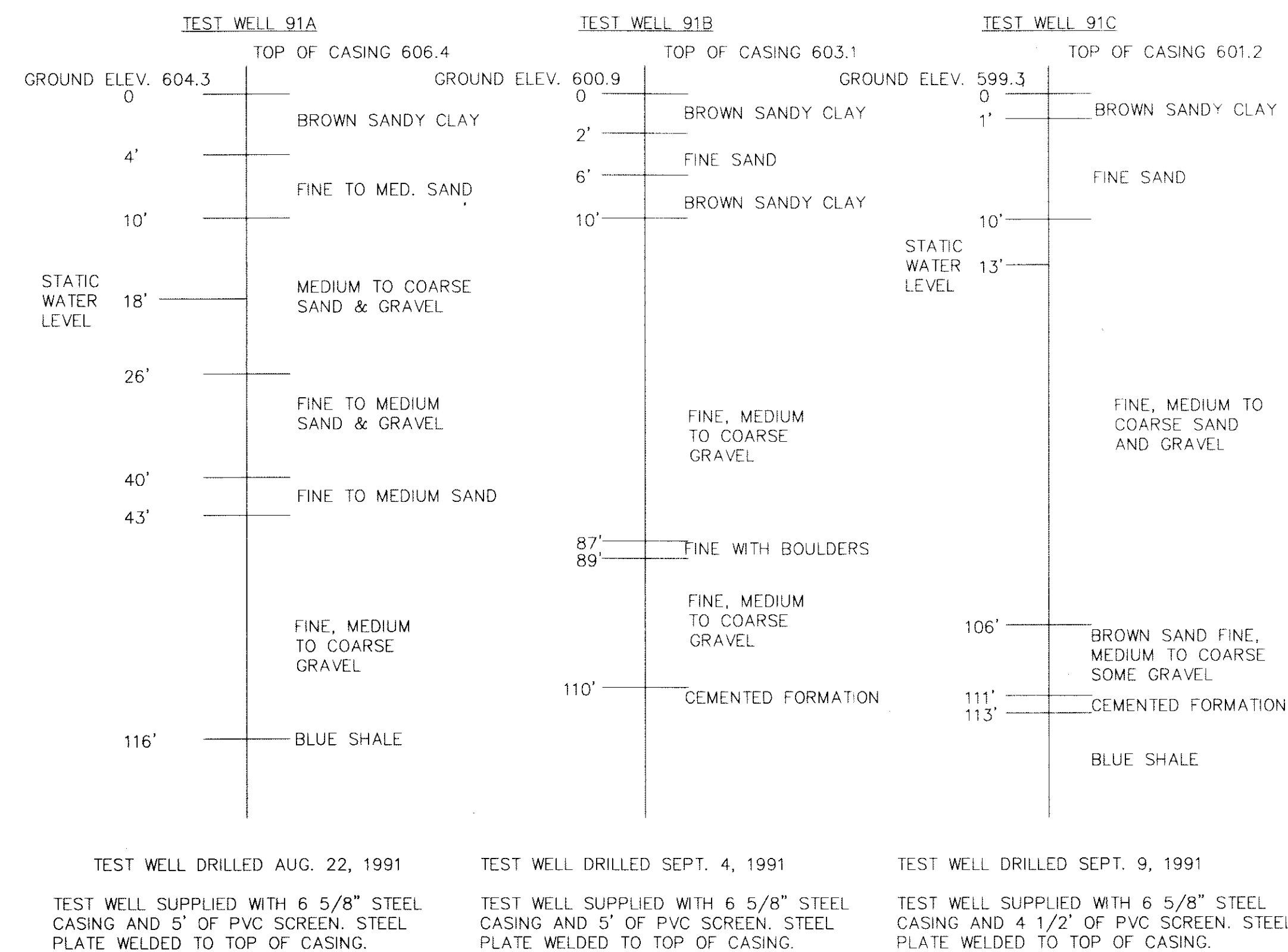
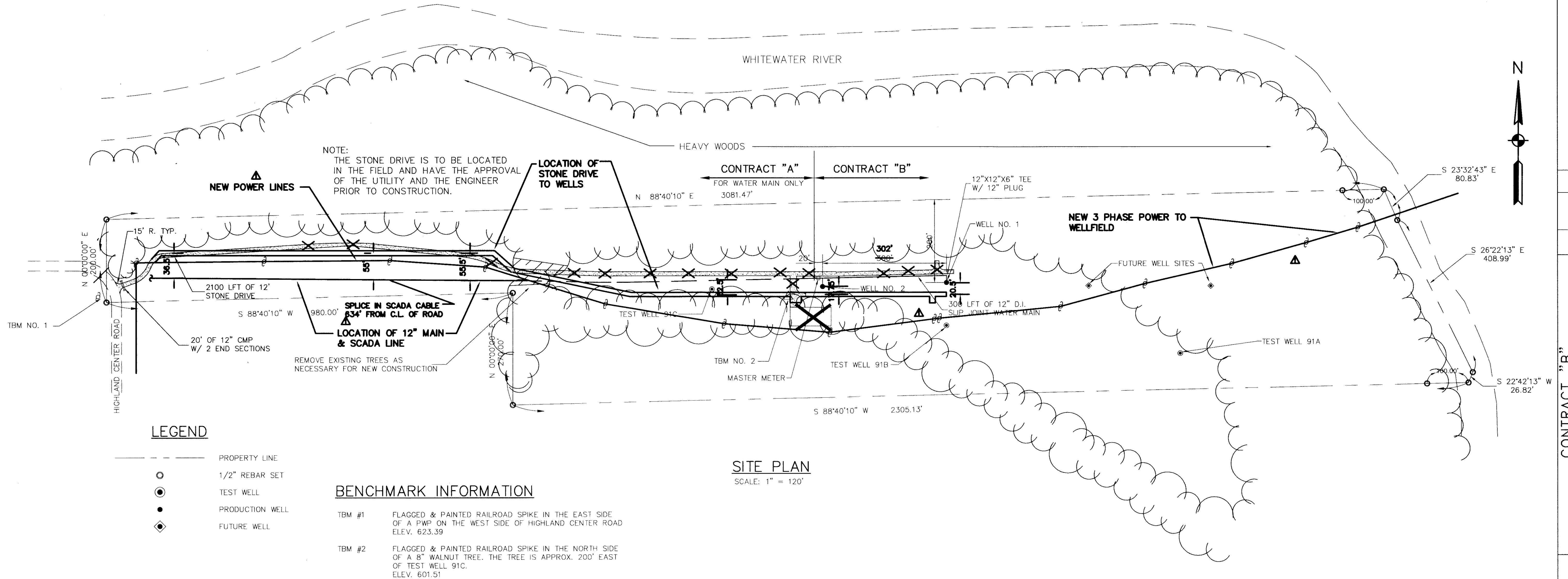


C:\DMG\373-B3 Thu Nov 21 08:47:22 1996



RECORD DRAWINGS

THESE DRAWINGS HAVE BEEN PREPARED FROM INFORMATION BY OTHERS. ENGINEER WILL NOT BE RESPONSIBLE FOR ERRORS AND OMISSIONS IN THE INFORMATION OR RECORDS FROM WHICH THESE DRAWINGS ARE PRODUCED.

CONTRACT "B"		WELLS AND TREATMENT FACILITIES		WELLFIELD SITE PLAN		ELROD WATER COMPANY, INC.		DIVISION "E"		WATERWORKS SYSTEM IMPROVEMENTS	
DATE	NO.	BY	DATE	NO.	BY	DATE	NO.	BY	DATE	NO.	BY
11/8/96	1	CLG	11/8/96	1	CLG	11/8/96	1	CLG	11/8/96	1	CLG
RECORD DRAWINGS											
M.D. WESSLER and ASSOCIATES CONSULTING ENGINEERS											
6219 South East Street, Suite A Indianapolis, Indiana 46227-2148											
SCALE:	AS SHOWN	DATE:	OCT. 14, 1993	PROJECT NO.:	37391.04	DRAWN BY:	CLG	APPROVED BY:	D.G.C.	PLOTTED:	1/26/94
NOT PUBLISHED ALL RIGHTS RESERVED											
EXCEPT FOR USES EXPRESSLY PERMITTED IN WRITING, INFORMATION SHOWN OR INCLUDED IN THIS DOCUMENT IS SOLELY THE PROPERTY OF M.D. WESSLER & ASSOCIATES, INC.											
MARTIN A. WESSLER REGISTERED PROFESSIONAL ENGINEER No. 8300188 STATE OF INDIANA											
SHEET B3 OF 19											