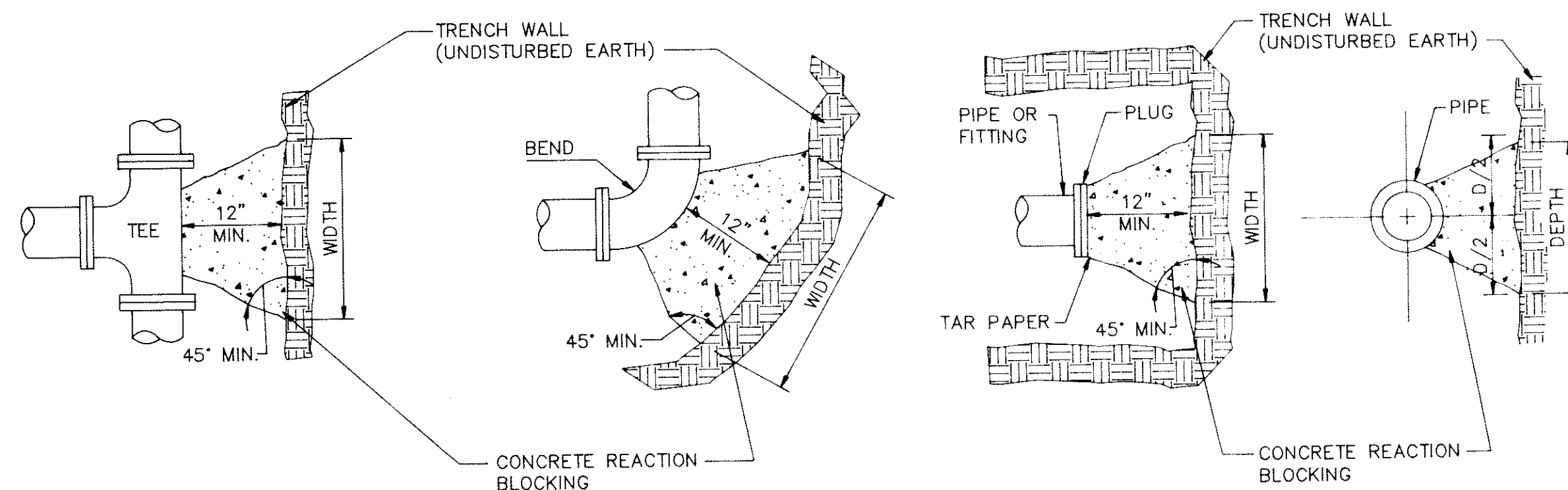


TYPICAL HYDRANT ASSEMBLY
NO SCALE

NOTES:

1. SET HYDRANT VALVE AND BOX ON GOOD SUPPORT SUCH AS TREATED LUMBER, CRUSHED STONE, CONC. PADS, OR THOROUGHLY COMPACTED TRENCH BOTTOM.
2. 2' X 3' DEEP COARSE SAND AND GRAVEL DRAINAGE PIT.
3. POUR ALL CONCRETE THRUST BLOCKING AGAINST UNDISTURBED EARTH. DO NOT BLOCK HYDRANT DRAIN PORT WITH CONCRETE.
4. TIE RODS OR SPECIAL RESTRAINED FITTING (CLOW F-1215, M.J. ANCHOR CPLG.) MAY BE USED IN PLACE OF CONC. THRUST BLOCKING. RESTRAINT MUST BE FROM DIST. MAIN TO HYDRANT. TIE RODS SHALL BE THOROUGHLY COATED WITH A RUST INHIBITOR.
5. VALVE BOX SHALL BE CENTERED AND PLUMB OVER VALVE OPERATING NUT.
6. FIRE HYDRANT TO BE PAINTED PER PERRY TOWNSHIP FIRE DEPARTMENT REQUIREMENTS.
7. SEE VALVE DETAIL FOR PROPER HYDRANT VALVE INSTALLATION.

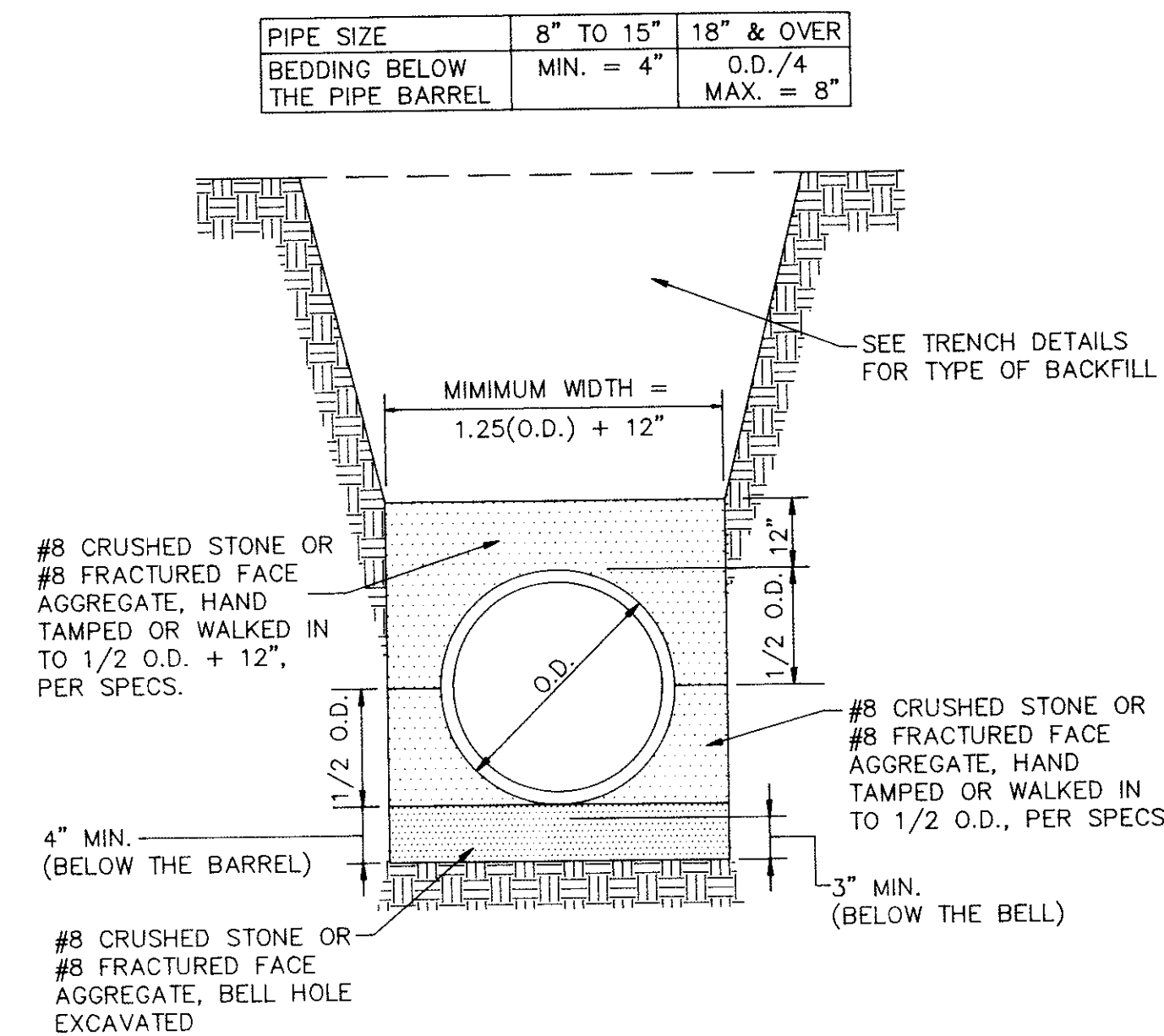


	TEE		22 1/2°		45°		90°		PLUG	
SIZE	W	D	W	D	W	D	W	D	W	D
3" 4"	2'-6"	1'-0"	1'-0"	9"	1'-6"	1'-3"	2'-9"	1'-3"	1'-6"	1'-6"
6"	3'-3"	1'-6"	2'-0"	1'-0"	2'-6"	1'-6"	4'-3"	1'-6"	2'-3"	2'-3"
8"	4'-3"	2'-0"	2'-0"	1'-9"	3'-9"	1'-9"	6'-0"	2'-0"	3'-0"	3'-0"
10"	5'-3"	2'-6"	3'-0"	1'-9"	4'-0"	2'-6"	7'-3"	3'-9"	3'-9"	3'-9"
12"	6'-0"	3'-0"	3'-6"	2'-0"	4'-9"	3'-6"	7'-9"	3'-0"	4'-3"	4'-3"

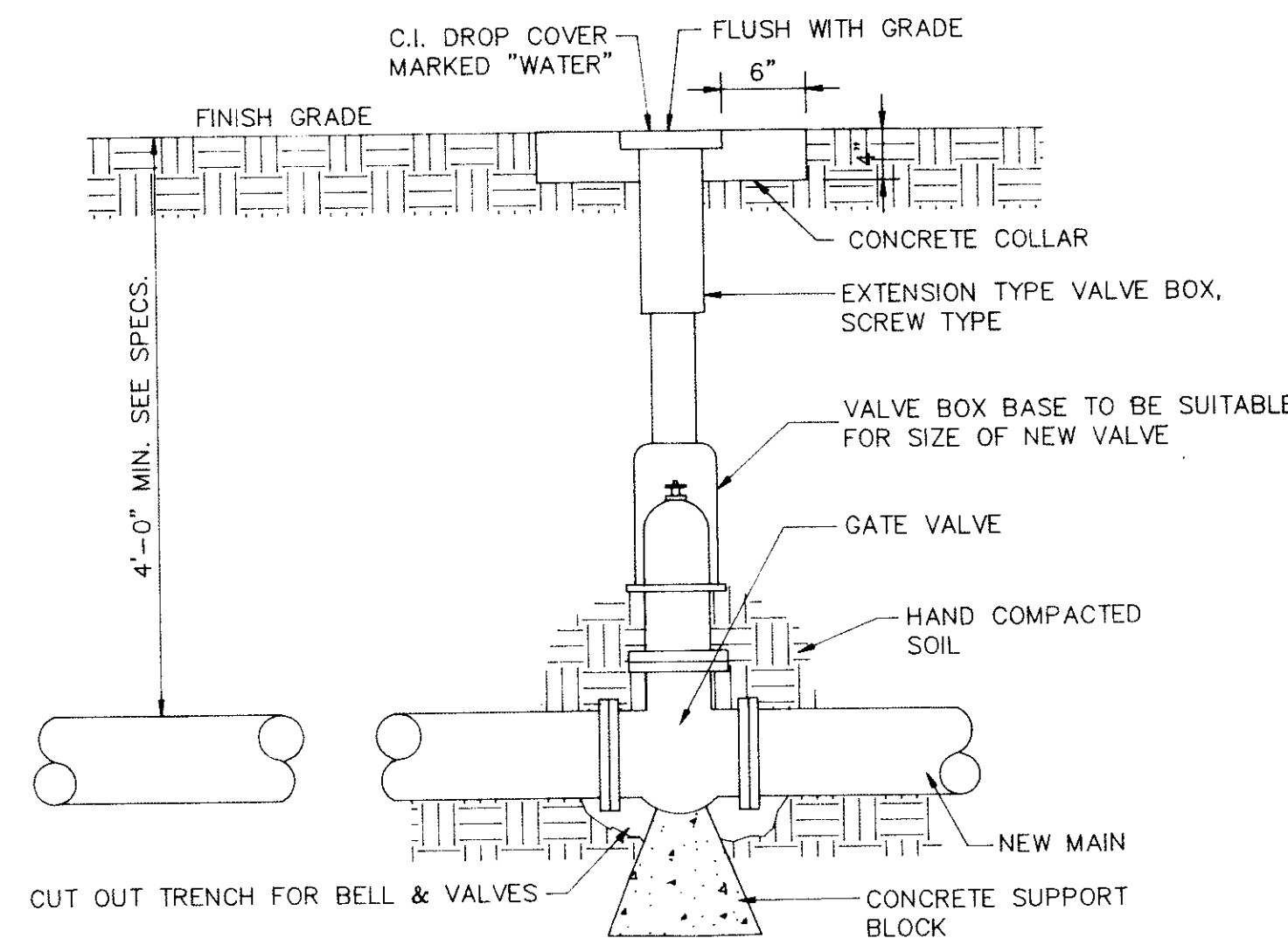
NOTES:

1. CONCRETE REACTION BLOCKING SHALL NOT COVER PIPE JOINTS, BOLTS, OR GLANDS.
2. CONCRETE SHALL HAVE A COMPRESSIVE STRENGTH OF NOT LESS THAN 2000 PSI AFTER 28 DAYS.
3. WRAP D.I. FITTINGS WITH 8 MIL VISQUEEN OR POLYETHYLENE ENCASEMENT.

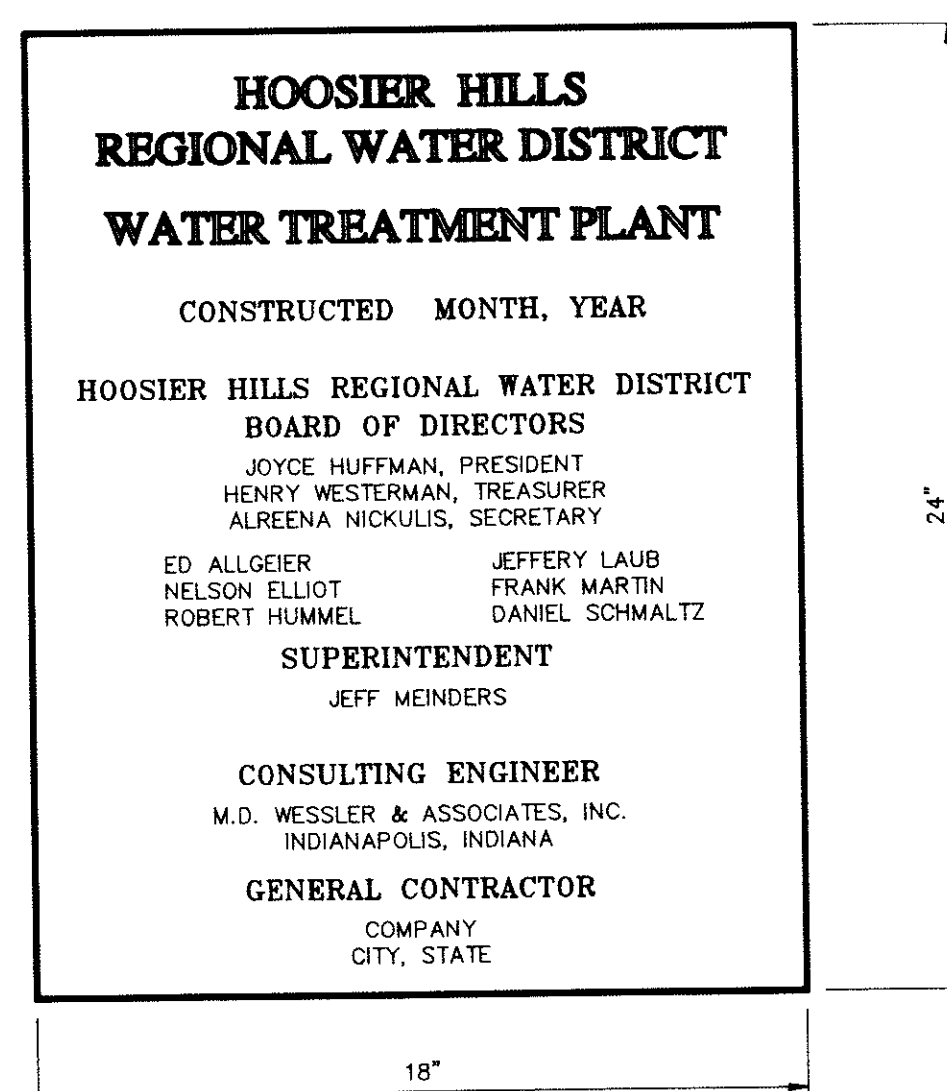
TYPICAL WATER MAIN REACTION BLOCKING
NO SCALE



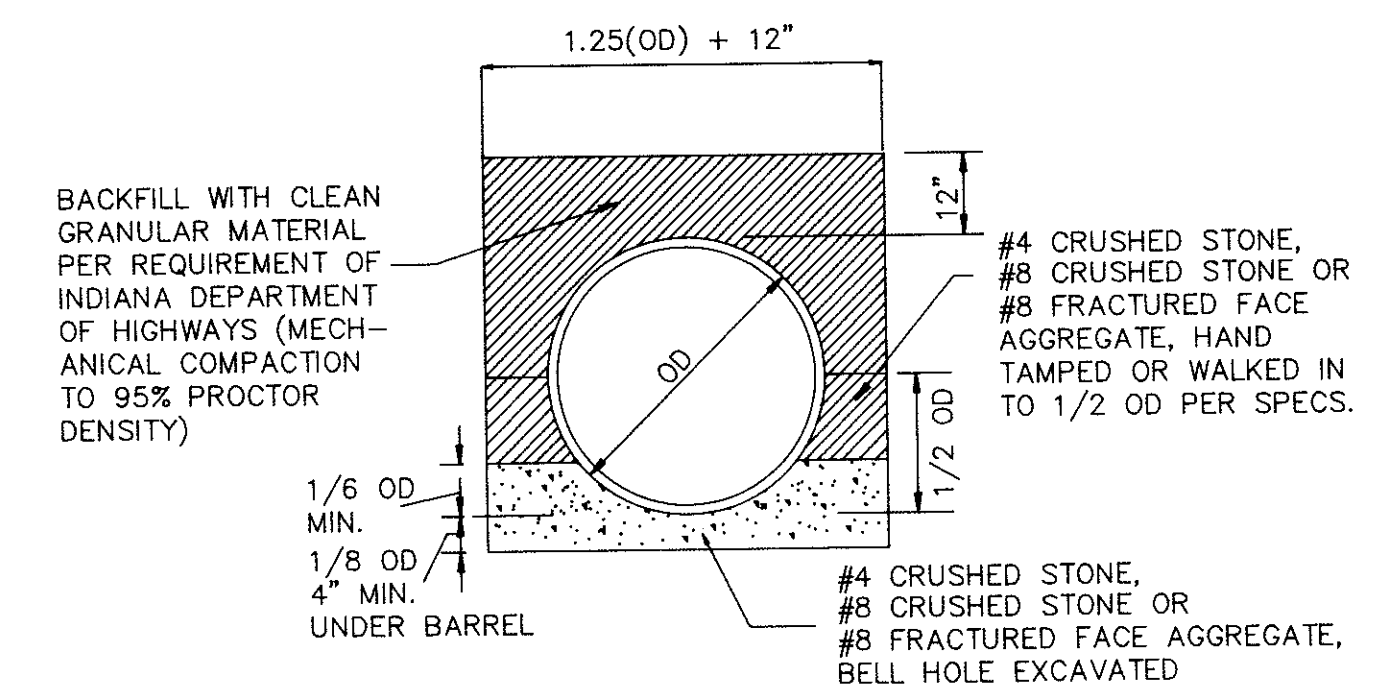
PVC PIPE BEDDING DETAIL
NO SCALE



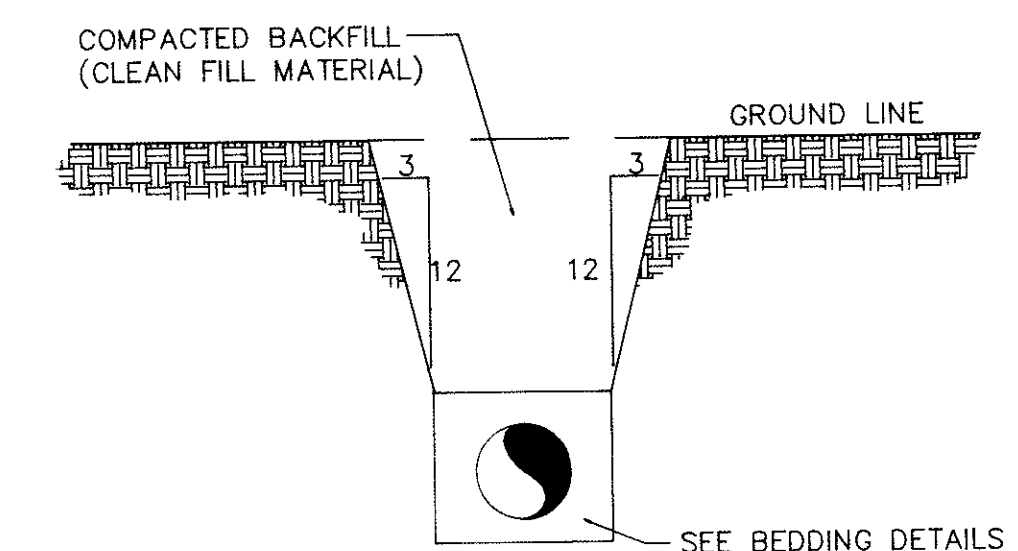
VALVE DETAIL
NO SCALE



DEDICATION PLAQUE DETAIL
NO SCALE



DUCTILE IRON PIPE BEDDING DETAIL
NO SCALE



TRENCH DETAIL
NO SCALE

CONTRACT "B"
WELLS AND TREATMENT FACILITIES
DETAILS

M.D. WESSLER
ASSOCIATES
CONSULTING ENGINEERS

ELROD WATER COMPANY, INC.
DIVISION "E"
WATERWORKS SYSTEM IMPROVEMENTS

SCALE: AS SHOWN
DATE: OCT. 14, 1993
PROJECT NO.: 37391.04
DRAWN BY: M.A.W.
APPROVED BY: D.G.C.
PLOTTED: 04/12/94
CAD FILE: 373-B79.DWG

NOT PUBLISHED
ALL RIGHTS RESERVED
EXCEPT FOR USES EXPRESSLY
PERMITTED IN WRITING, INFOR-
MATION SHOWN OR INCLUDED
IN THIS DOCUMENT IS SOLELY
THE PROPERTY OF M.D.
WESSLER & ASSOCIATES, INC.

SHEET B19
OF 19