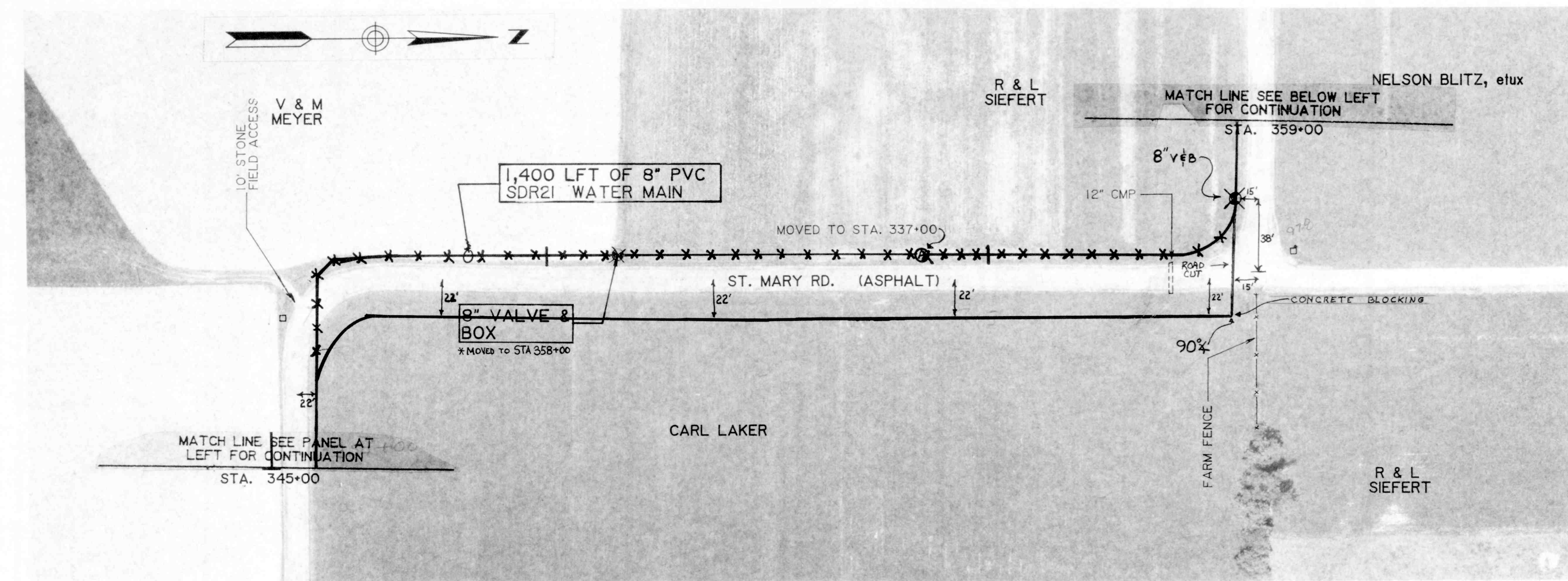


GROUND ELEV. = 984.0±
MAX. STATIC PRESS. = 76.3 PSI±

LINE B ST. MARYS RD.



GROUND ELEV. = 985.0±
MAX. STATIC PRESS. = 75.8 PSI±

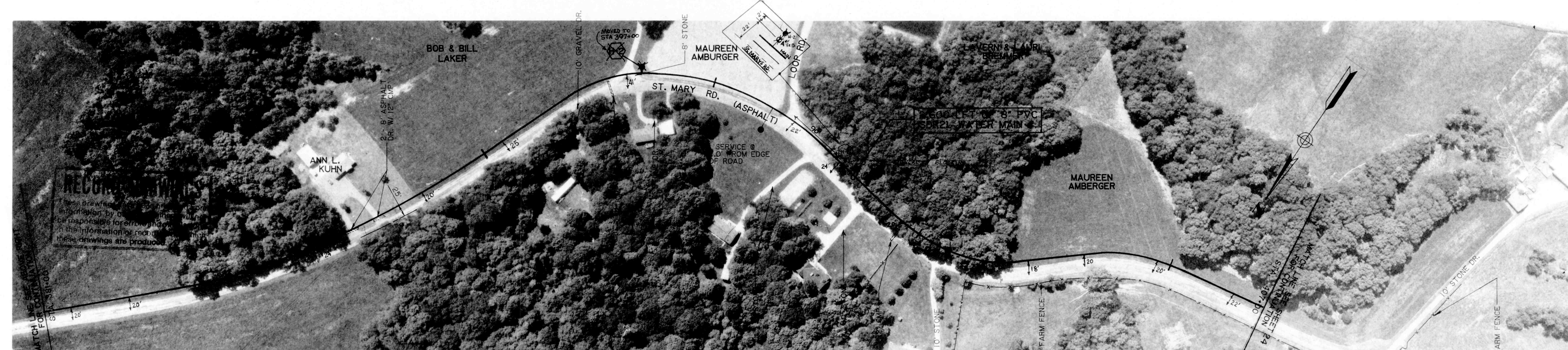
LINE B ST. MARYS RD.



GROUND ELEV. = 978.0 ±
MAX. STATIC PRESS. = 78.8 PSI±

LINE B ST. MARYS RD.

GROUND ELEV. = 972.0±
MAX. STATIC PRESS. = 81.5 PSI±



GROUND ELEV. = 972.0±
MAX. STATIC PRESS. 81.5 PSI±

LINE B ST. MARYS RD.

GROUND ELEV. = 970.0±
MAX. STATIC PRESS. = 92.3 PSI±

CONTRACT "A" WATER MAINS LINE "B"		ELROD WATER COMPANY, INC. DIVISION "E" WATERWORKS SYSTEM IMPROVEMENTS	
WESSLER and ASSOCIATES CONSULTING ENGINEERS 6219 South East Street, Suite A Indianapolis, Indiana 46227-2148		SCALE: 1" = 100' DATE: OCT. 14, 1993 PROJECT NO.: 37391.04 DRAWN BY: TLG APPROVED BY: DGC	
NOT PUBLISHED ALL RIGHTS RESERVED EXCEPT FOR USES EXPRESSLY PERMITTED IN WRITING, INFOR- MATION SHOWN OR INCLUDED IN THIS DOCUMENT IS SOLELY THE PROPERTY OF M.D. WESSLER & ASSOCIATES, INC.		PHOTOGRAPHY BY: ACCU-DRY SURVEYS, INC., SEYMOUR, INDIANA SHEET A 23 OF 45	