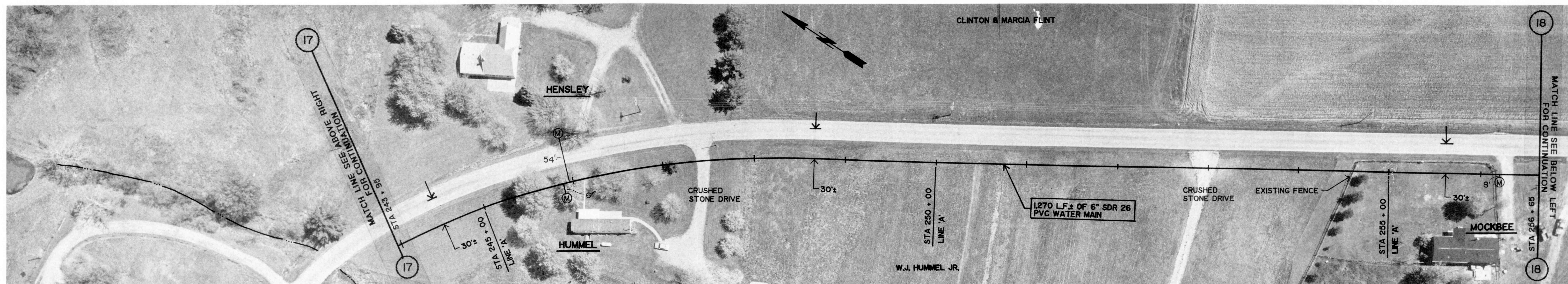


GROUND ELEV. = 962.0 ±
MAX. STATIC PRESS. = 85.7 PSI ±

CHESTERVILLE ROAD

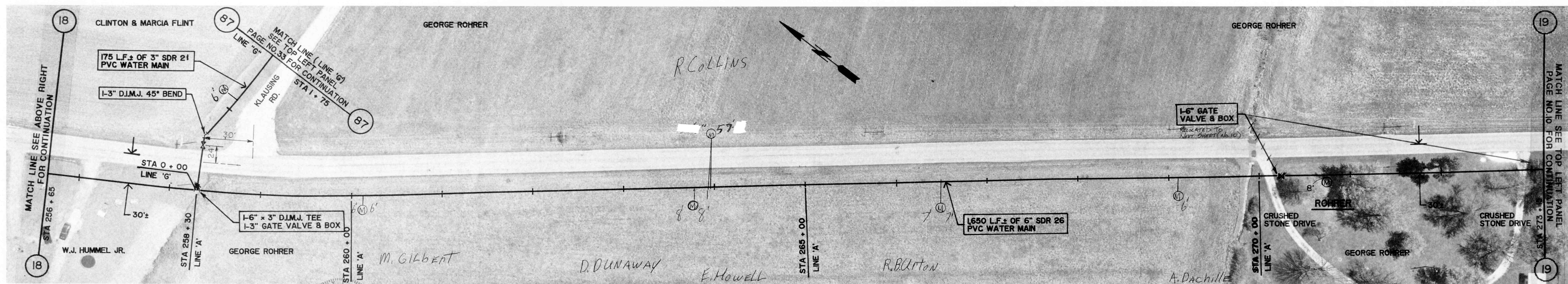
GROUND ELEV. = 918.0 ±
MAX. STATIC PRESS. = 104.8 PSI ±



GROUND ELEV. = 918.0 ±
MAX. STATIC PRESS. = 104.8 PSI ±

CHESTERVILLE ROAD

GROUND ELEV. = 935.0 ±
MAX. STATIC PRESS. = 97.4 PSI ±



GROUND ELEV. = 935.0 ±
MAX. STATIC PRESS. = 97.4 PSI ±

CHESTERVILLE ROAD

GROUND ELEV. = 923.0 ±
MAX. STATIC PRESS. = 102.6 PSI ±



REVISIONS

DRAWN BY	Robert E. Curry
DATE	10/1/91
CERTIFIED BY	REC
DATE	10/1/91

ROBERT E. CURRY & ASSOCIATES, INC.
CONSULTING ENGINEERS

ELROD WATER COMPANY INC.
DIVISION "D" DISTRIBUTION SYSTEM EXTENSIONS

6" PVC WATER MAIN
EXTENSION ALONG
CHESTERVILLE ROAD

JOB NO.		SHT.	9
SCALE	1" = 50'	OF	43