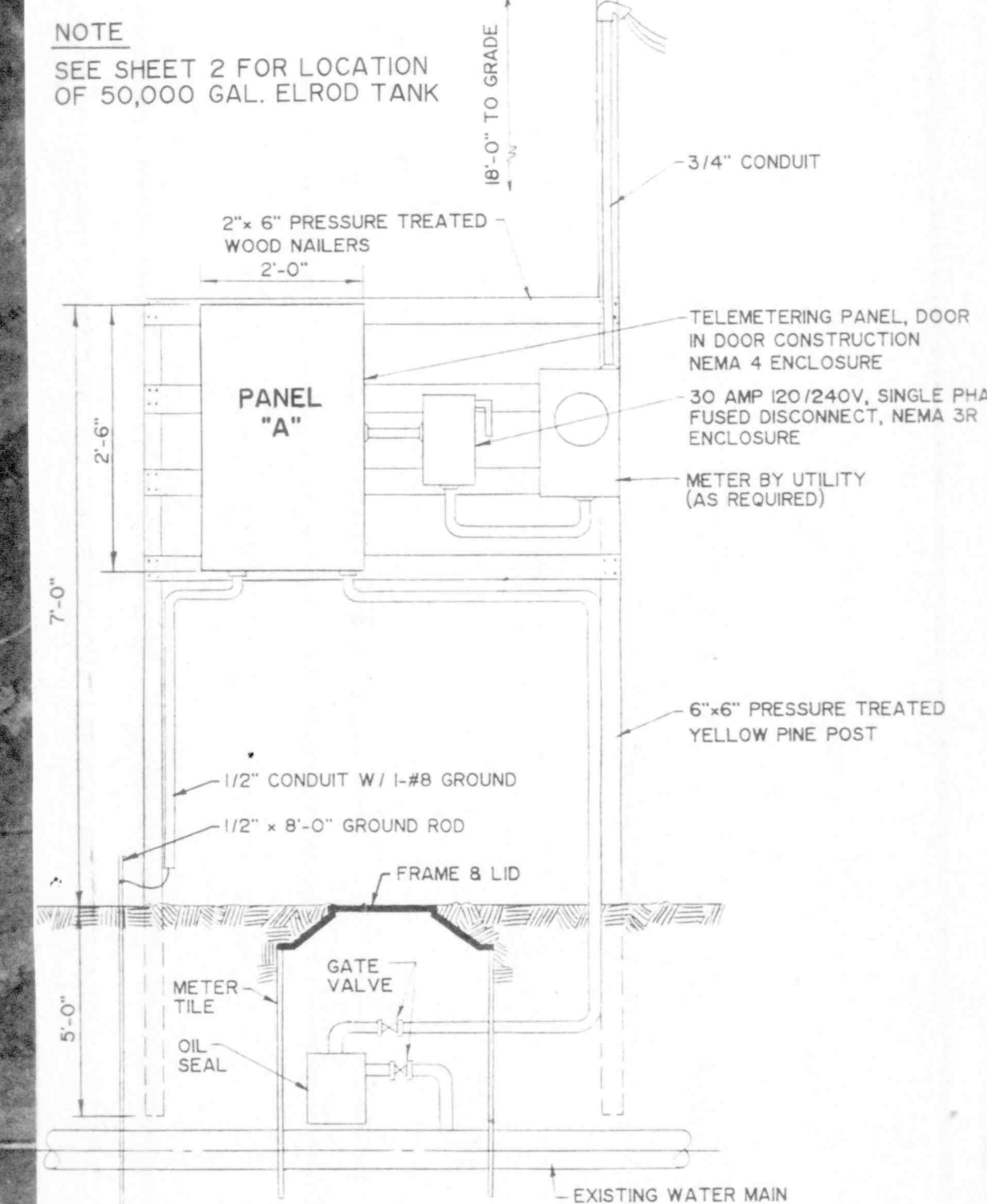




SOUTHEASTERN INDIANA RURAL
TELEPHONE CO-OP INC.

BOOSTER STATION SITE

SCALE
1" = 400'



TELEMETERING PANEL "A"
(LOCATED AT 50,000 GAL. ELROD TANK)



Robert E. Curry & Associates, Inc.
Engineers and Architects
3346 Avon Road, Plainfield, IN 46168
(317)-272-3050

ELROD WATER COMPANY, INC.

DIV. "D" DISTRIBUTION
SYSTEM EXTENSIONS

BOOSTER STATION LOCATION PLAN

DATE 10/1/91 APPROVED BY Robert E. Curry DRAWING NUMBER 40 OF 43