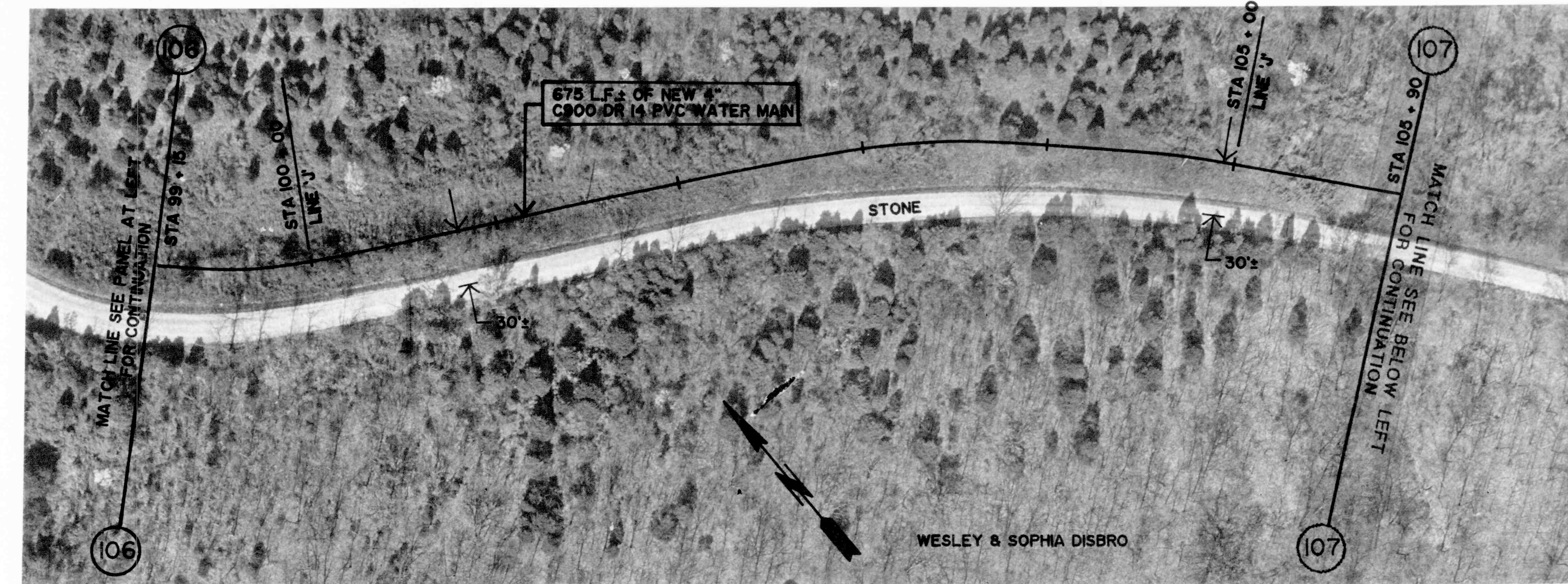


GROUND ELEV. = 840.0 ±  
MAX. STATIC PRESS. = 138.5 PSI ±  
REDUCED PRESS. 78.5 PSI ±

LONG BRANCH ROAD

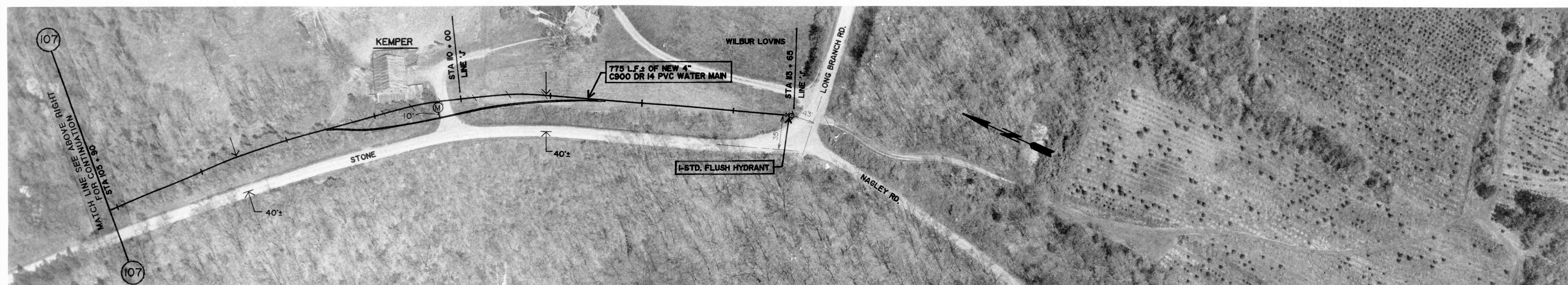
GROUND ELEV. = 840.0 ±  
MAX. STATIC PRESS. = 138.5 PSI ±  
REDUCED PRESS. 78.5 PSI ±



GROUND ELEV. = 840.0 ±  
MAX. STATIC PRESS. = 138.5 PSI ±  
REDUCED PRESS. 78.5 PSI ±

LONG BRANCH ROAD

GROUND ELEV. = 820.0 ±  
MAX. STATIC PRESS. = 147.2 PSI ±  
REDUCED PRESS. 87.2 PSI ±



GROUND ELEV. = 820.0 ±  
MAX. STATIC PRESS. = 147.2 PSI ±  
REDUCED PRESS. 87.2 PSI ±

LONG BRANCH ROAD

GROUND ELEV. = 810.0 ±  
MAX. STATIC PRESS. = 151.1 PSI ±  
REDUCED PRESS. 91.1 PSI ±



Robert E. Curry

REVISIONS

DRAWN BY	RC
DATE	10/1/91
CERTIFIED BY	RC
DATE	10/1/91

ROBERT E. CURRY & ASSOCIATES, INC.  
CONSULTING ENGINEERS

ELROD WATER COMPANY INC.  
DIVISION "D" DISTRIBUTION SYSTEM EXTENSIONS

4" PVC WATER MAIN  
EXTENSION ALONG  
LONG BRANCH ROAD

JOB NO.	SHT.
SCALE 1" = 50'	38 OF 43