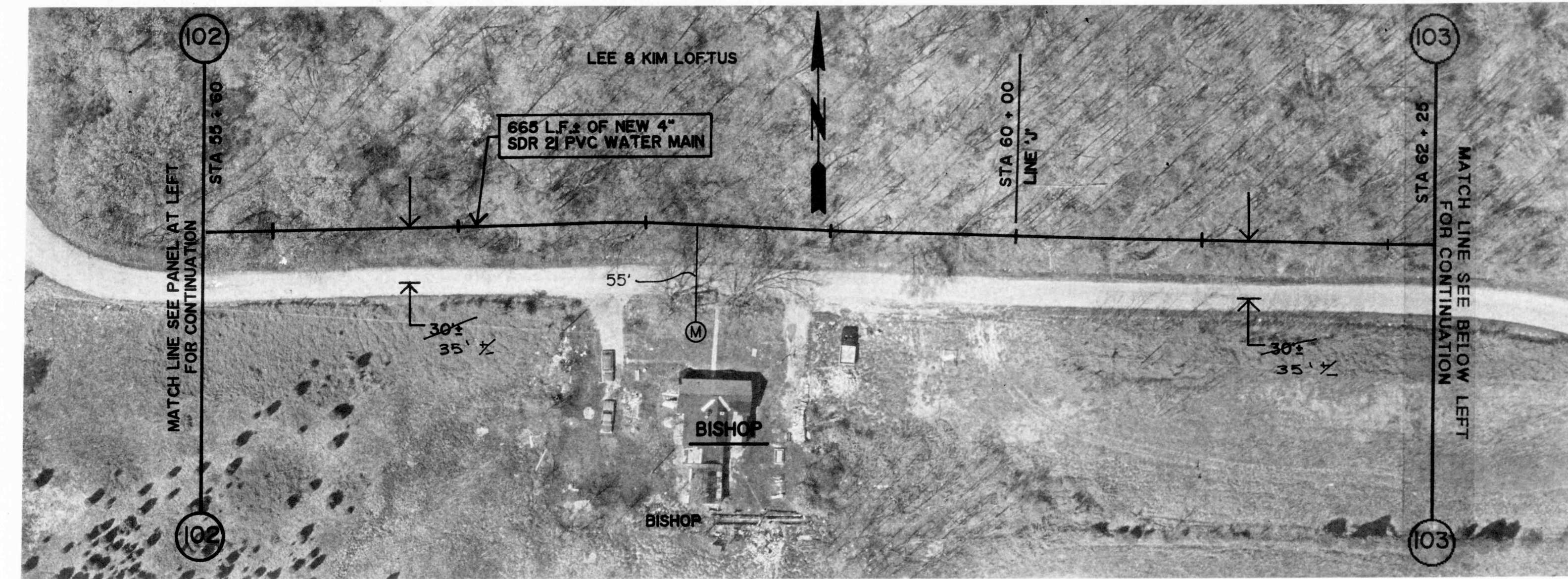


GROUND ELEV. = 860.0 ±
MAX. STATIC PRESS. = 129.9 PSI ±
REDUCED PRESS. 50.1 PSI ±

LONG BRANCH ROAD

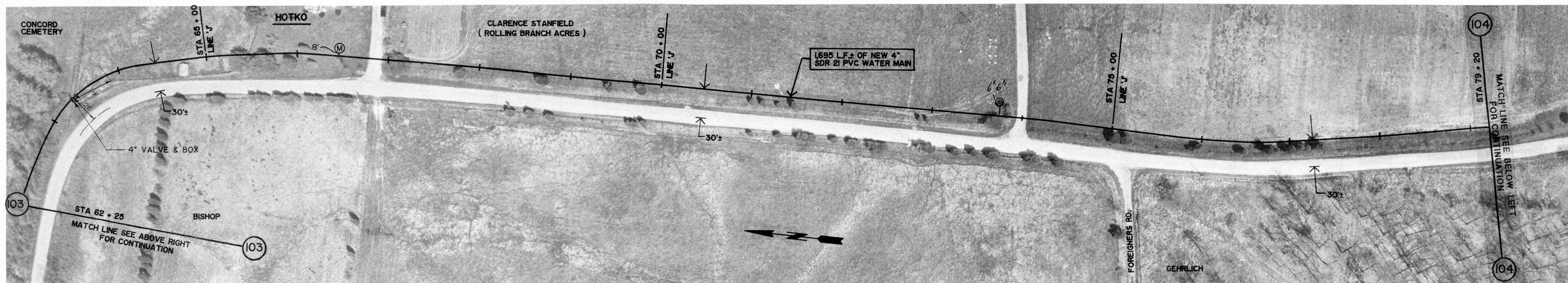
GROUND ELEV. = 851.0 ±
MAX. STATIC PRESS. = 133.8 PSI ±
REDUCED PRESS. 73.8 PSI ±



GROUND ELEV. = 851.0 ±
MAX. STATIC PRESS. = 133.8 PSI ±
REDUCED PRESS. 73.8 PSI ±

LONG BRANCH ROAD

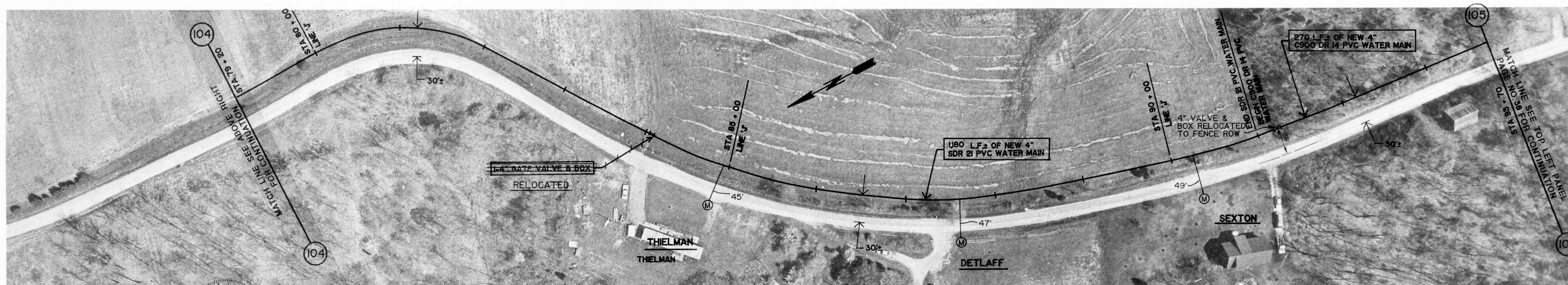
GROUND ELEV. = 859.0 ±
MAX. STATIC PRESS. = 130.3 PSI ±
REDUCED PRESS. 70.3 PSI ±



GROUND ELEV. = 859.0 ±
MAX. STATIC PRESS. = 130.3 PSI ±
REDUCED PRESS. 70.3 PSI ±

LONG BRANCH ROAD

GROUND ELEV. = 850.0 ±
MAX. STATIC PRESS. = 134.2 PSI ±
REDUCED PRESS. 70.3 PSI ±



GROUND ELEV. = 850.0 ±
MAX. STATIC PRESS. = 134.2 PSI ±
REDUCED PRESS. 70.3 PSI ±

LONG BRANCH ROAD

GROUND ELEV. = 840.0 ±
MAX. STATIC PRESS. = 138.5 PSI ±
REDUCED PRESS. 78.5 PSI ±

REVISIONS

DRAWN BY
DATE
CERTIFIED BY
DATE

ROBERT E. CURRY & ASSOCIATES, INC.
CONSULTING ENGINEERS

ELROD WATER COMPANY INC.
DIVISION "D" DISTRIBUTION SYSTEM EXTENSIONS

4" PVC WATER MAIN
EXTENSION ALONG
LONG BRANCH ROAD

JOB NO.
SCALE
1" = 50'

SHT.
OF
37
43