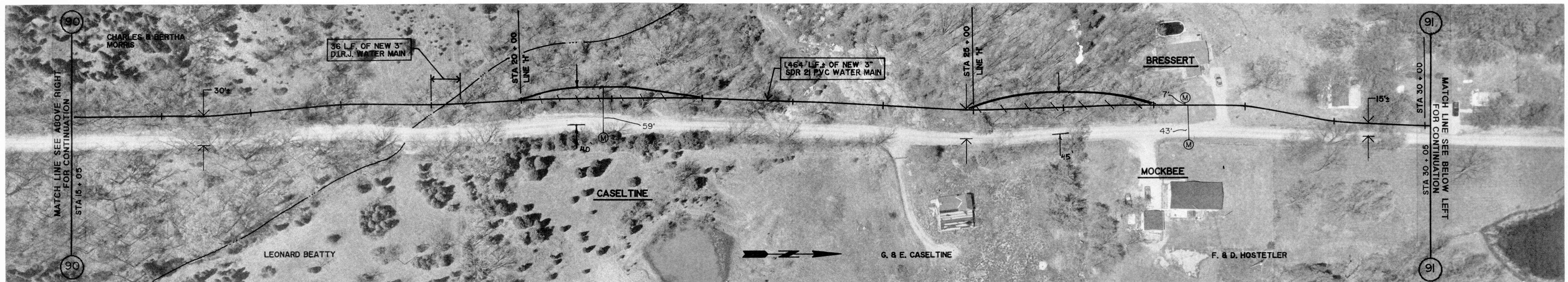




GROUND ELEV. = 896.0 ±
MAX. STATIC PRESS. = 114.3 PSI ±

CASELTINE ROAD

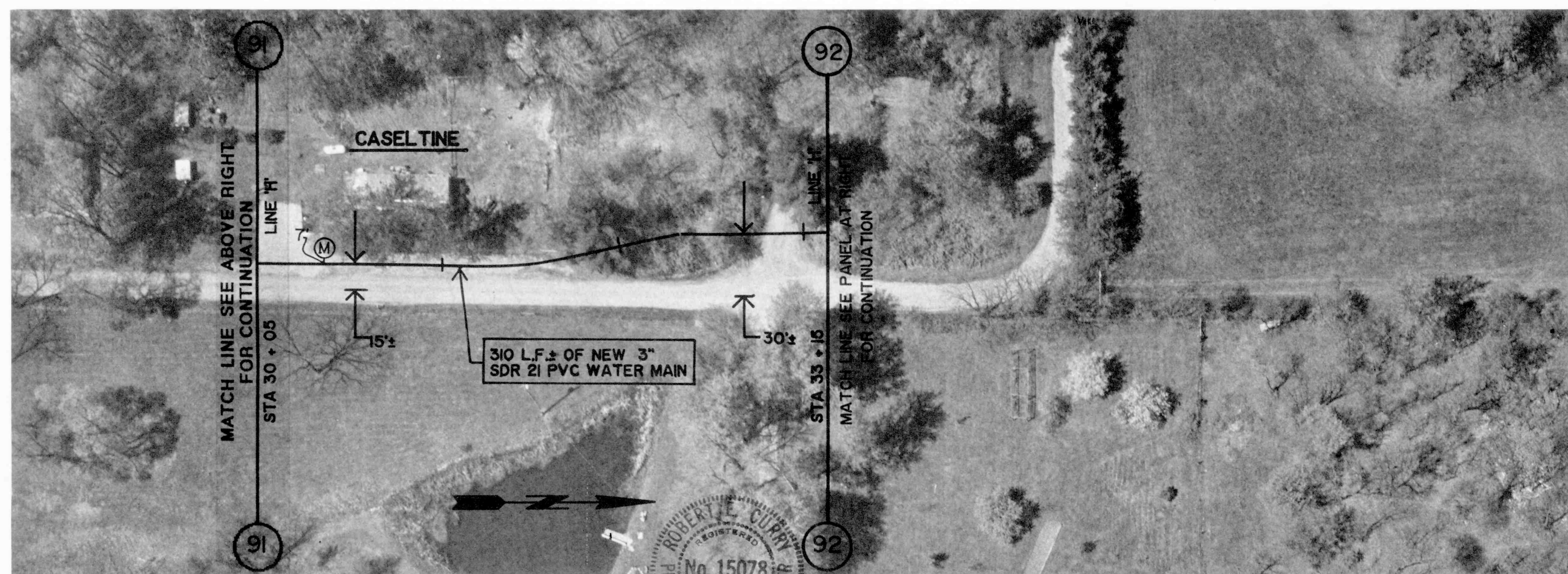
GROUND ELEV. = 840.0 ±
MAX. STATIC PRESS. = 138.5 PSI ±



GROUND ELEV. = 840.0 ±
MAX. STATIC PRESS. = 138.5 PSI ±

CASELTINE ROAD

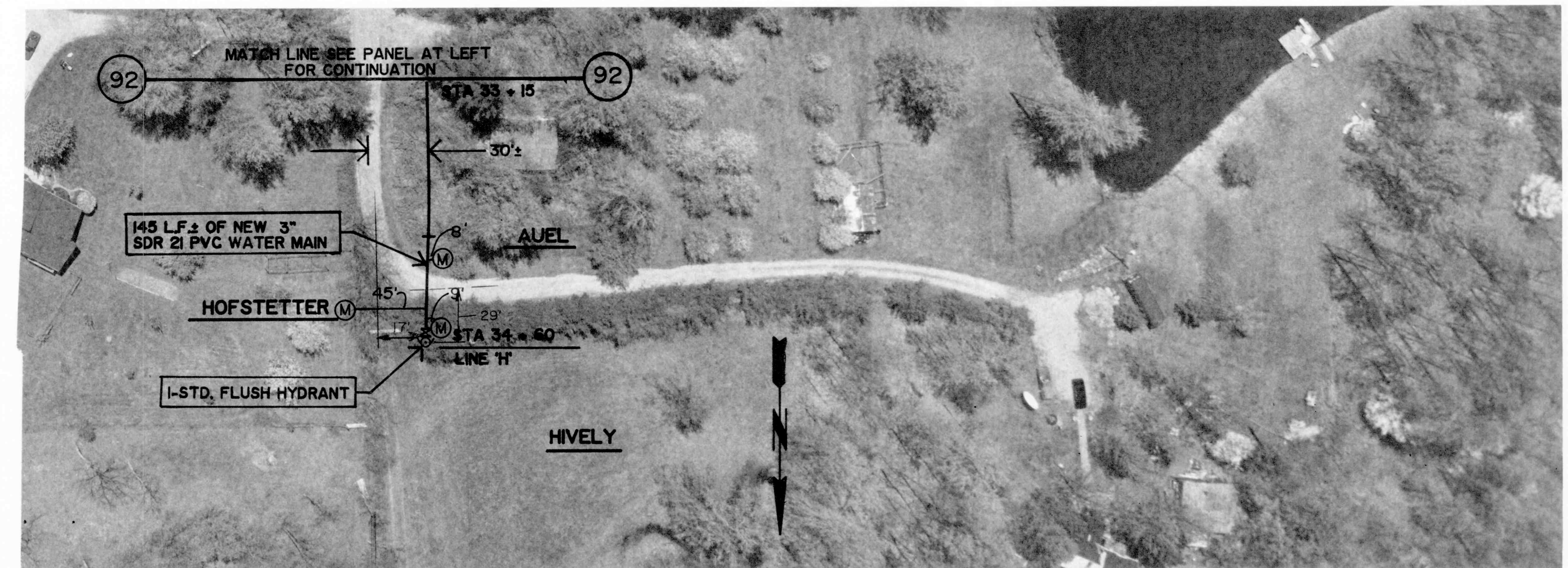
GROUND ELEV. = 890.0 ±
MAX. STATIC PRESS. = 116.9 PSI ±



GROUND ELEV. = 890.0 ±
MAX. STATIC PRESS. = 116.9 PSI ±

CASELTINE ROAD

GROUND ELEV. = 890.0 ±
MAX. STATIC PRESS. = 116.9 PSI ±



GROUND ELEV. = 890.0 ±
MAX. STATIC PRESS. = 116.9 PSI ±

CASELTINE ROAD

REVISIONS

DRAWN BY
DATE
CERTIFIED BY
DATE

ROBERT E. CURRY & ASSOCIATES, INC.
CONSULTING ENGINEERS

ELROD WATER COMPANY INC.
DIVISION "D" DISTRIBUTION SYSTEM EXTENSIONS

3" PVC WATER MAIN
EXTENSION ALONG
CASELTINE ROAD

JOB NO.
SCALE 1" = 50'
SHT. 34
OF 43