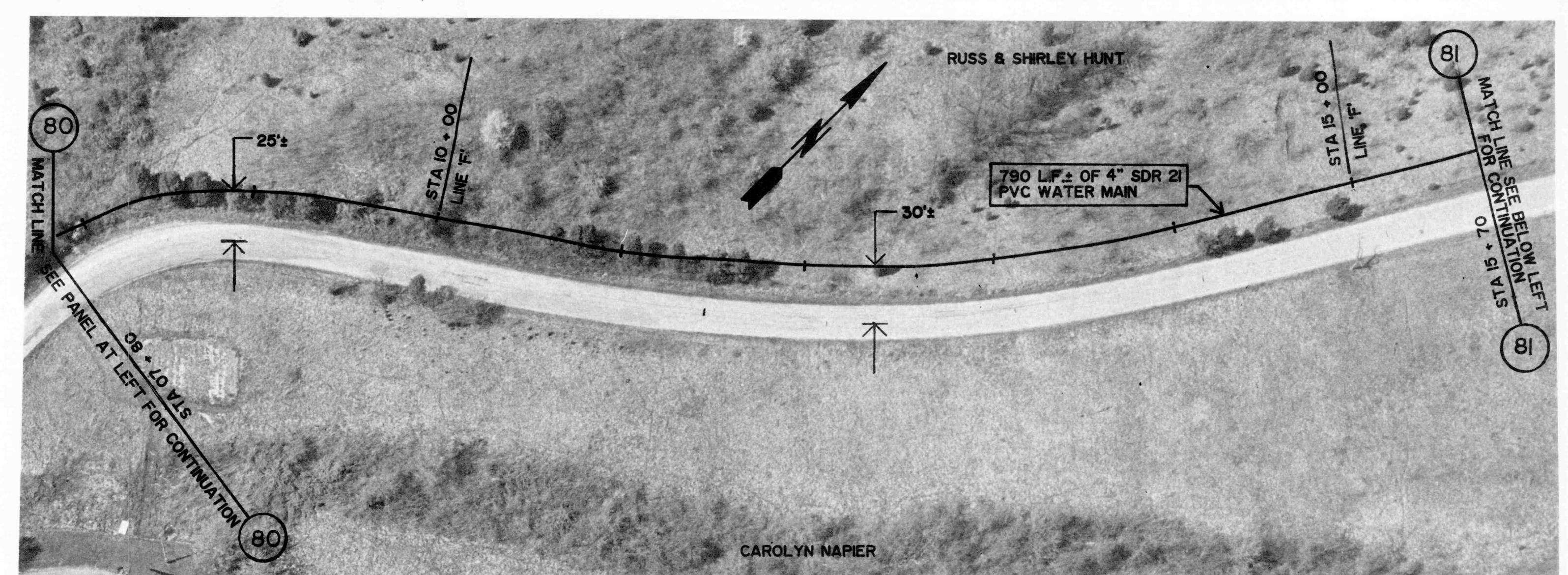


GROUND ELEV. = 908.0 ±
MAX. STATIC PRESS. = 109.1 PSI ±

COLD SPRINGS ROAD

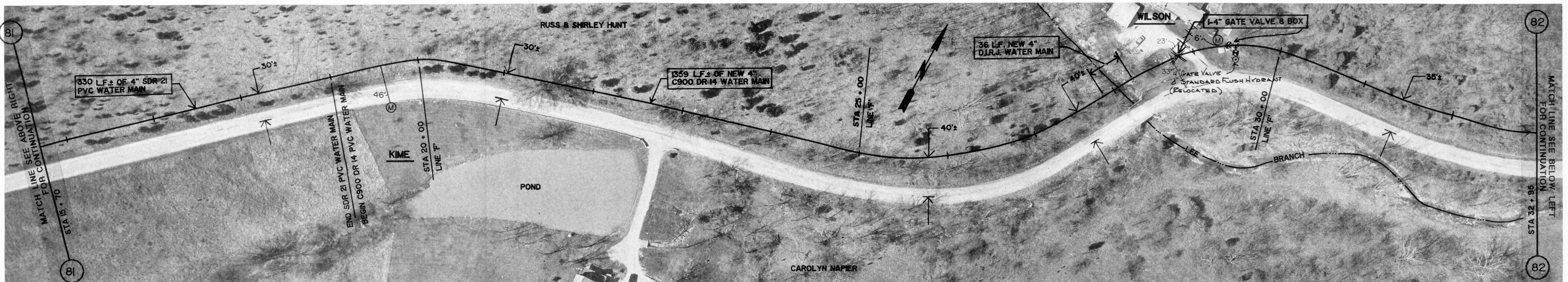
GROUND ELEV. = 895.0 ±
MAX. STATIC PRESS. = 114.7 PSI ±



GROUND ELEV. = 895.0 ±
MAX. STATIC PRESS. = 114.7 PSI ±

COLD SPRINGS ROAD

GROUND ELEV. = 870.0 ±
MAX. STATIC PRESS. = 125.5 PSI ±



GROUND ELEV. = 870.0 ±
MAX. STATIC PRESS. = 125.5 PSI ±

COLD SPRINGS ROAD

GROUND ELEV. = 775.0 ±
MAX. STATIC PRESS. = 166.7 PSI ±



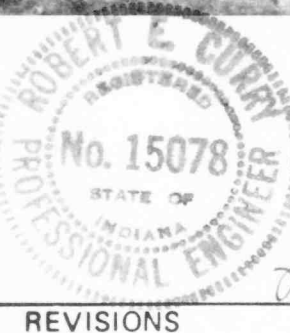
GROUND ELEV. = 775.0 ±
MAX. STATIC PRESS. = 166.7 PSI ±

COLD SPRINGS ROAD

GROUND ELEV. AT TRACKS = 790.0 ±
MAX. STATIC PRESS. = 160.2 PSI ±

GROUND ELEV. = 800.0 ±
MAX. STATIC PRESS. = 155.8 PSI ±

NOTE: D.N.R. PERMIT REQUIRED TO CROSS STREAM. OWNER TO OBTAIN PERMIT. STREAM CROSSING PER STANDARD STREAM CROSSING DETAIL.



REVISIONS

DRAWN BY	JL
DATE	10/1/91
CERTIFIED BY	REC
DATE	10/1/91

ROBERT E. CURRY & ASSOCIATES, INC.
CONSULTING ENGINEERS

ELROD WATER COMPANY INC.
DIVISION "D" DISTRIBUTION SYSTEM EXTENSIONS

4" PVC WATER MAIN
EXTENSION ALONG
COLD SPRINGS ROAD

JOB NO.	SHT.
SCALE	OF
1" = 50'	43