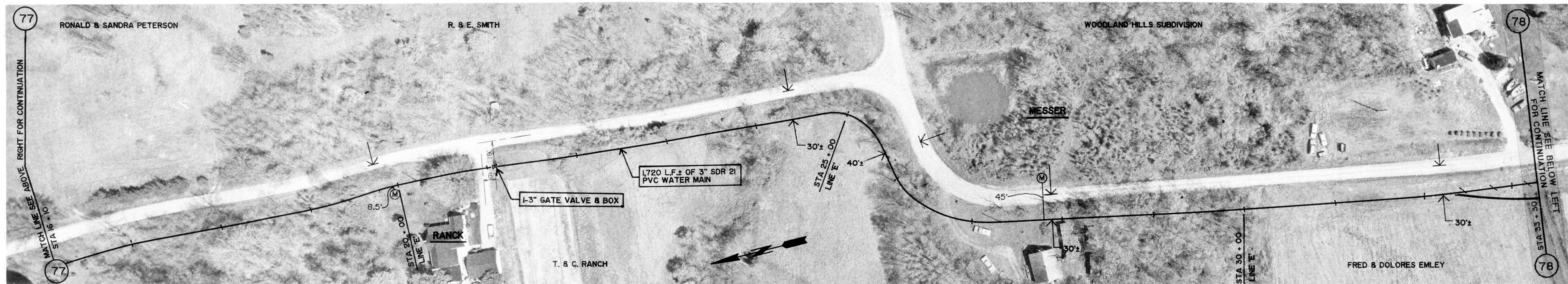


GROUND ELEV. = 942.0 ±
MAX. STATIC PRESS. = 94.4 PSI ±

WILKERSON ROAD

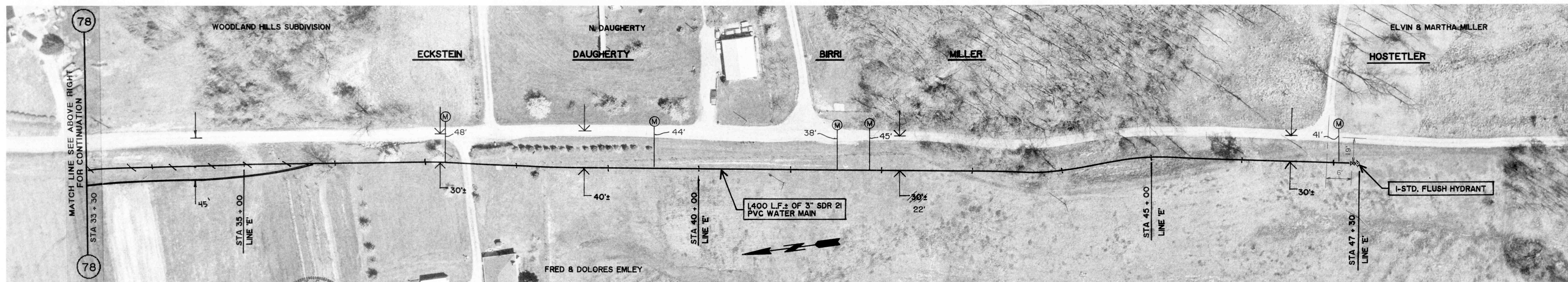
GROUND ELEV. = 900.0 ±
MAX. STATIC PRESS. = 112.6 PSI ±



GROUND ELEV. = 900.0 ±
MAX. STATIC PRESS. = 112.6 PSI ±

WILKERSON ROAD

GROUND ELEV. = 920.0 ±
MAX. STATIC PRESS. = 103.9 PSI ±



GROUND ELEV. = 920.0 ±
MAX. STATIC PRESS. = 103.9 PSI ±

WILKERSON ROAD

GROUND ELEV. = 925.0 ±
MAX. STATIC PRESS. = 101.7 PSI ±

GROUND ELEV. = 870.0 ±
MAX. STATIC PRESS. = 125.5 PSI ±

REVISIONS	DRAWN BY	Robert E. Curry	ROBERT E. CURRY & ASSOCIATES, INC. CONSULTING ENGINEERS	ELROD WATER COMPANY INC. DIVISION "D" DISTRIBUTION SYSTEM EXTENSIONS	3" PVC WATER MAIN EXTENSION ALONG WILKERSON ROAD	JOB NO.	SHT.
	DATE	10/1/97				SCALE	OF
	CERTIFIED BY	R.E.C.				1" = 50'	43
	DATE	10/1/97					