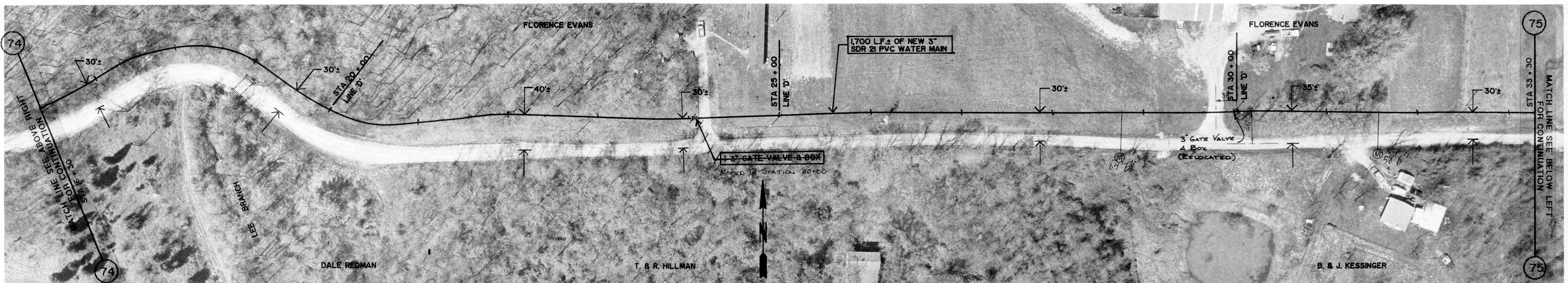


GROUND ELEV. = 949.0 ±
MAX. STATIC PRESS. = 91.3 PSI ±

EWING ROAD

GROUND ELEV. = 900.0 ±
MAX. STATIC PRESS. = 112.6 PSI ±



GROUND ELEV. = 900.0 ±
MAX. STATIC PRESS. = 112.6 PSI ±

EWING ROAD

GROUND ELEV. = 900.0 ±
MAX. STATIC PRESS. = 112.6 PSI ±



GROUND ELEV. = 900.0 ±
MAX. STATIC PRESS. = 112.6 PSI ±

EWING ROAD

GROUND ELEV. = 880.0 ±
MAX. STATIC PRESS. = 121.2 PSI ±

REVISIONS



DRAWN BY	RL
DATE	10/1/91
CERTIFIED BY	RE
DATE	10/1/91

ROBERT E. CURRY & ASSOCIATES, INC.
CONSULTING ENGINEERS

ELROD WATER COMPANY INC.
DIVISION "D" DISTRIBUTION SYSTEM EXTENSIONS

3" PVC WATER MAIN
EXTENSION ALONG
EWING ROAD

JOB NO.	SHT. 29
SCALE 1" = 50'	OF 43