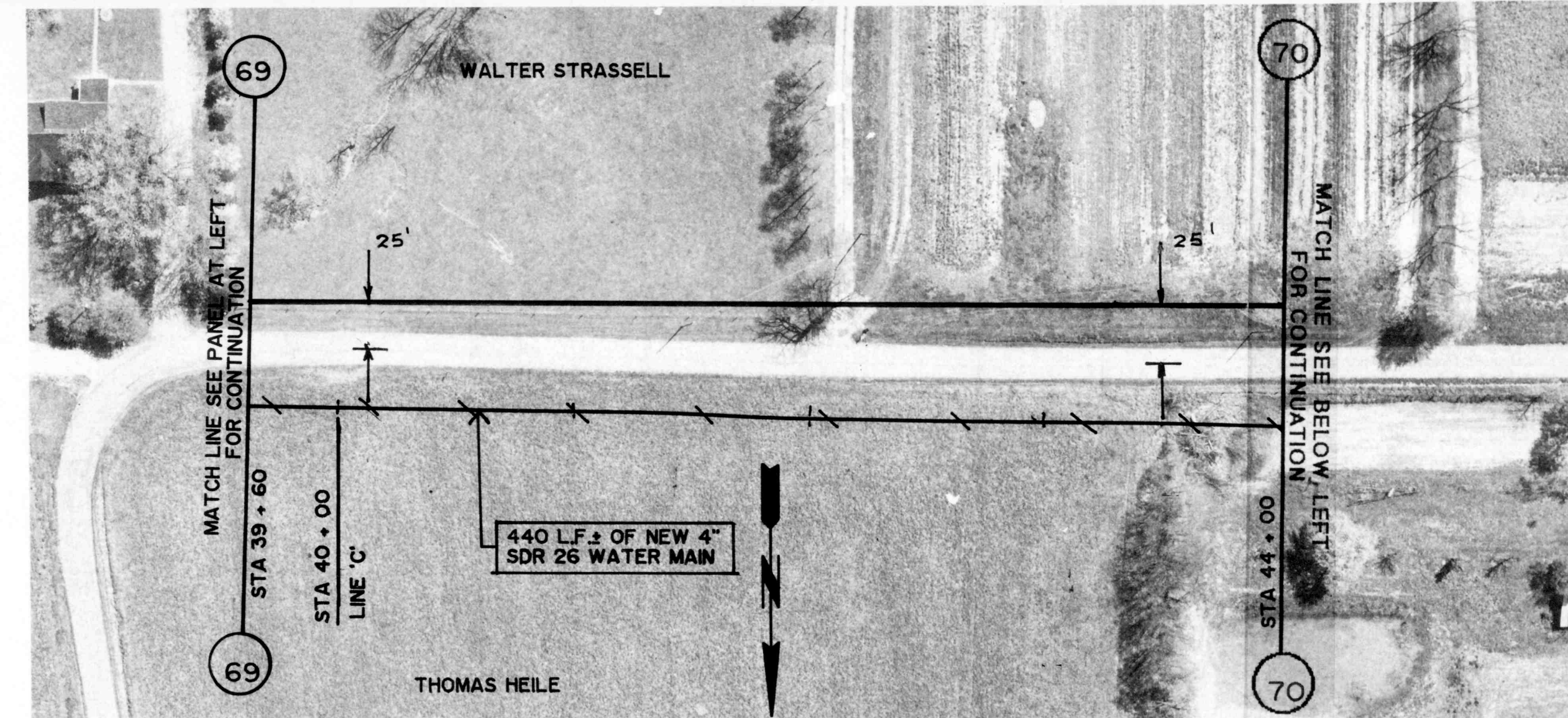


GROUND ELEV. = 993.0 ±  
MAX. STATIC PRESS. = 72.3 PSI ±

COUNTY ROAD 50 NORTH

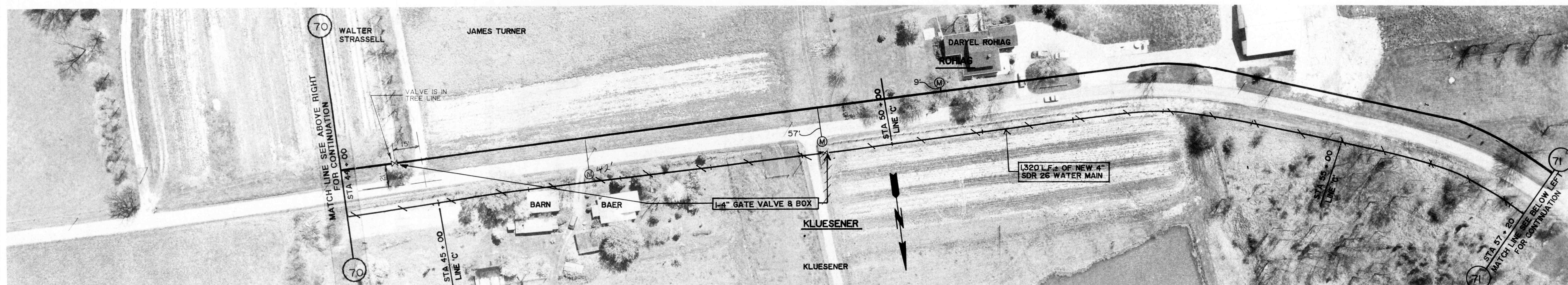
GROUND ELEV. = 981.0 ±  
MAX. STATIC PRESS. = 77.5 PSI ±



GROUND ELEV. = 981.0 ±  
MAX. STATIC PRESS. = 77.5 PSI ±

COUNTY ROAD 50 NORTH

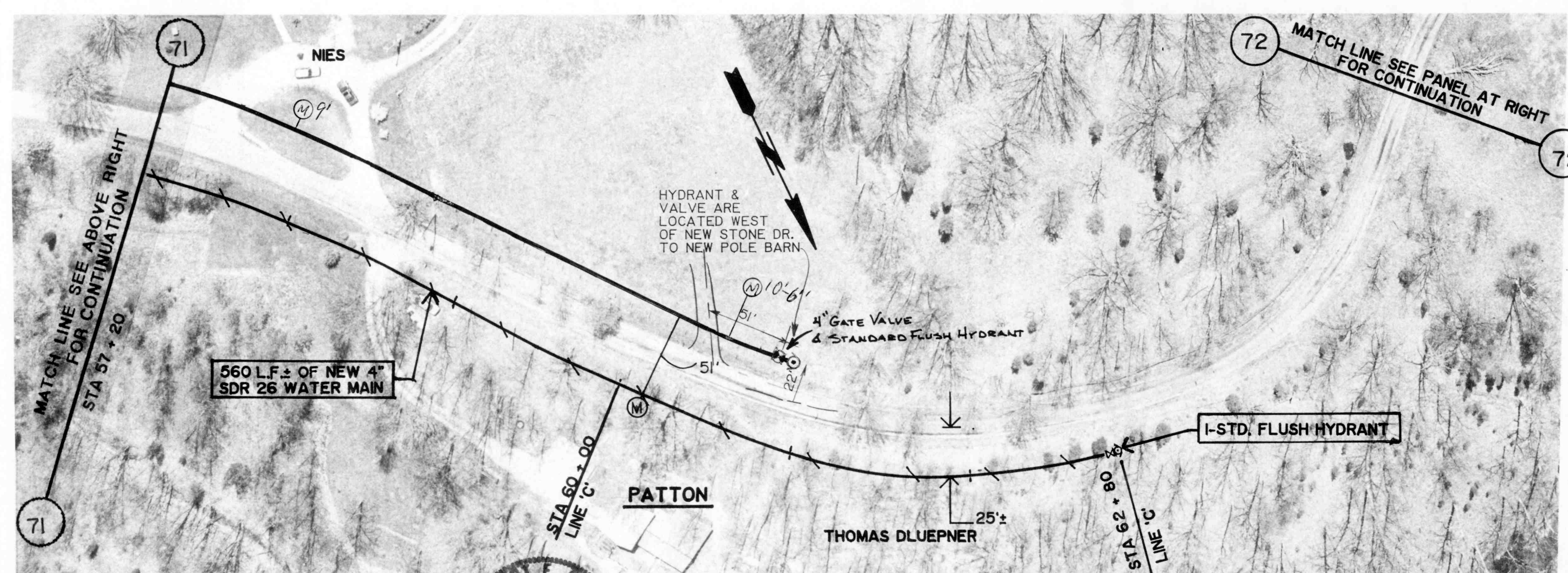
GROUND ELEV. = 980.0 ±  
MAX. STATIC PRESS. = 77.9 PSI ±



GROUND ELEV. = 980.0 ±  
MAX. STATIC PRESS. = 77.9 PSI ±

COUNTY ROAD 50 NORTH

GROUND ELEV. = 971.0 ±  
MAX. STATIC PRESS. = 81.8 PSI ±



GROUND ELEV. = 971.0 ±  
MAX. STATIC PRESS. = 81.8 PSI ±

COUNTY ROAD 50 NORTH

GROUND ELEV. = 920.0 ±  
MAX. STATIC PRESS. = 103.9 PSI ±



GROUND ELEV. = 920.0 ±  
MAX. STATIC PRESS. = 103.9 PSI ±

COUNTY ROAD 50 NORTH

GROUND ELEV. OF ROAD AT STREAM = 860.0

REVISIONS

DRAWN BY	JL
DATE	10/1/91
CERTIFIED BY	REC
DATE	12/1/91

ROBERT E. CURRY & ASSOCIATES, INC.  
CONSULTING ENGINEERS

ELROD WATER COMPANY INC.  
DIVISION "D" DISTRIBUTION SYSTEM EXTENSIONS

4" PVC WATER MAIN  
EXTENSION ALONG  
COUNTY ROAD 50 NORTH

JOB NO.	SHT. 28
SCALE	OF 43
1" = 50'	