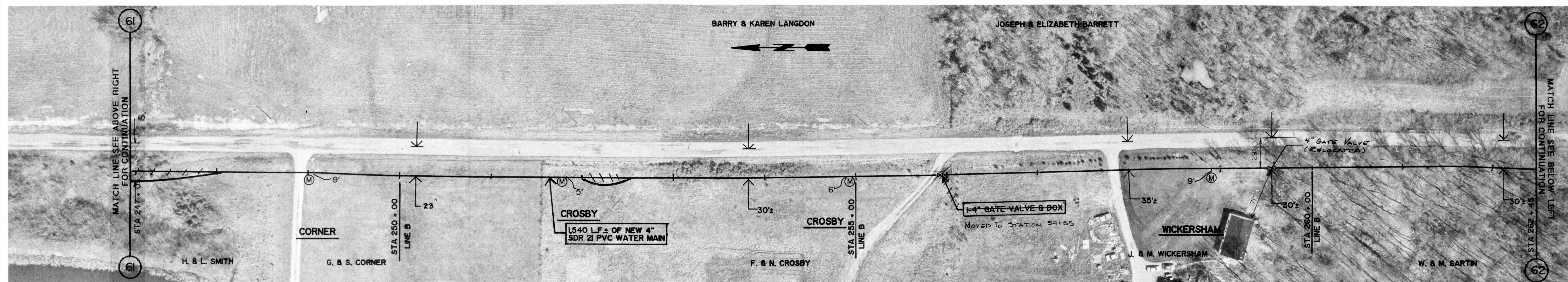


GROUND ELEV. = 908.0 ±  
MAX. STATIC PRESS. = 109.1 PSI ±

WEST COUNTY LINE ROAD

GROUND ELEV. = 899.0 ±  
MAX. STATIC PRESS. = 113.0 PSI ±  
REDUCED PRESS. 43.0 PSI ±

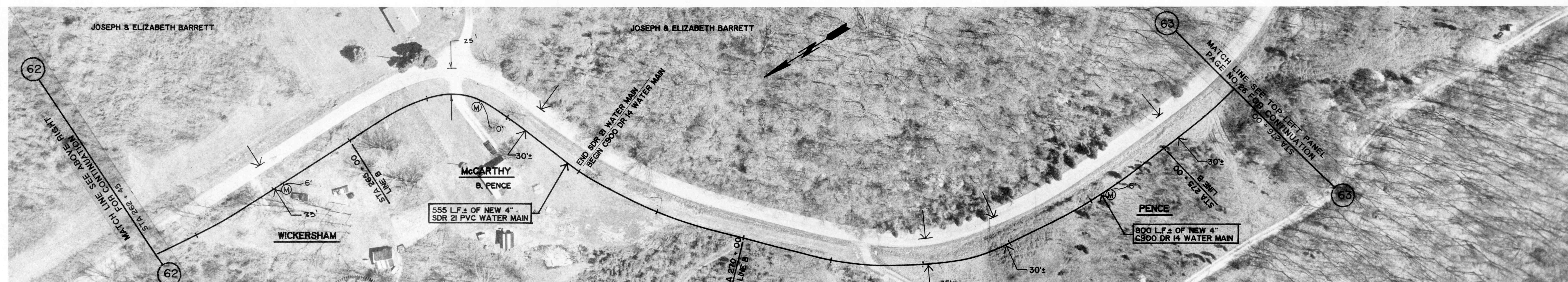
GROUND ELEV. = 880.0 ±  
MAX. STATIC PRESS. = 121.2 PSI ±  
REDUCED PRESS. 51.2 PSI ±



GROUND ELEV. = 880.0 ±  
MAX. STATIC PRESS. = 121.2 PSI ±  
REDUCED PRESS. 51.2 PSI ±

WEST COUNTY LINE ROAD

GROUND ELEV. = 890.0 ±  
MAX. STATIC PRESS. = 116.9 PSI ±  
REDUCED PRESS. 46.9 PSI ±



GROUND ELEV. = 890.0 ±  
MAX. STATIC PRESS. = 116.9 PSI ±  
REDUCED PRESS. 46.9 PSI ±

WEST COUNTY LINE ROAD

GROUND ELEV. = 840.0 ±  
MAX. STATIC PRESS. = 138.5 PSI ±  
REDUCED PRESS. 68.5 PSI ±

REVISIONS

DRAWN BY	RLC
DATE	10/1/91
CERTIFIED BY	REC
DATE	12/1/91

ROBERT E. CURRY & ASSOCIATES, INC.  
CONSULTING ENGINEERS

ELROD WATER COMPANY INC.  
DIVISION "D" DISTRIBUTION SYSTEM EXTENSIONS

4" PVC WATER MAIN  
EXTENSION ALONG  
WEST COUNTY LINE ROAD

JOB NO.	SHT.
SCALE	OF
1" = 50'	43