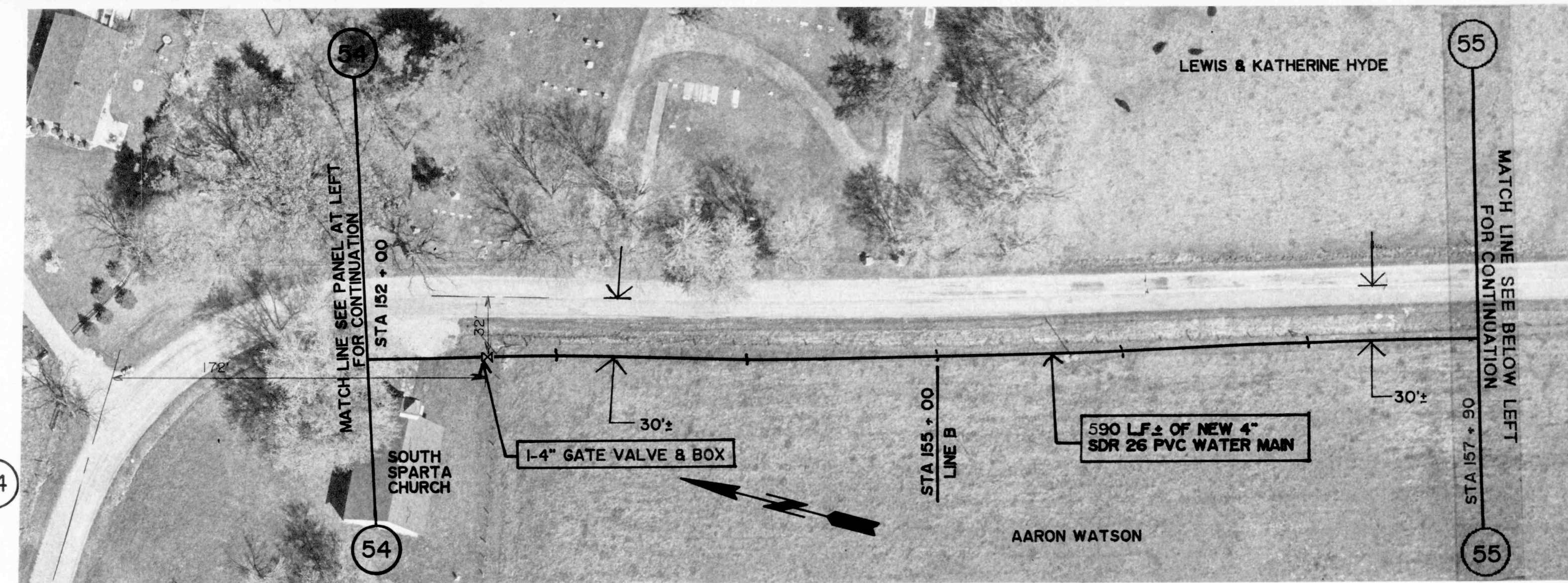




GROUND ELEV. = 960.0 ±
MAX. STATIC PRESS. = 86.6 PSI ±

WEST COUNTY LINE ROAD

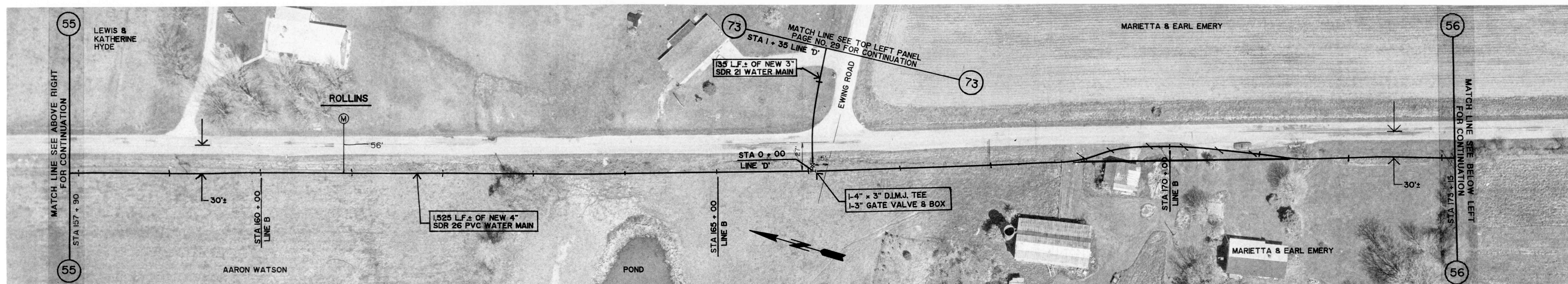
GROUND ELEV. = 950.0 ±
MAX. STATIC PRESS. = 90.9 PSI ±



GROUND ELEV. = 950.0 ±
MAX. STATIC PRESS. = 90.9 PSI ±

WEST COUNTY LINE ROAD

GROUND ELEV. = 950.0 ±
MAX. STATIC PRESS. = 90.9 PSI ±

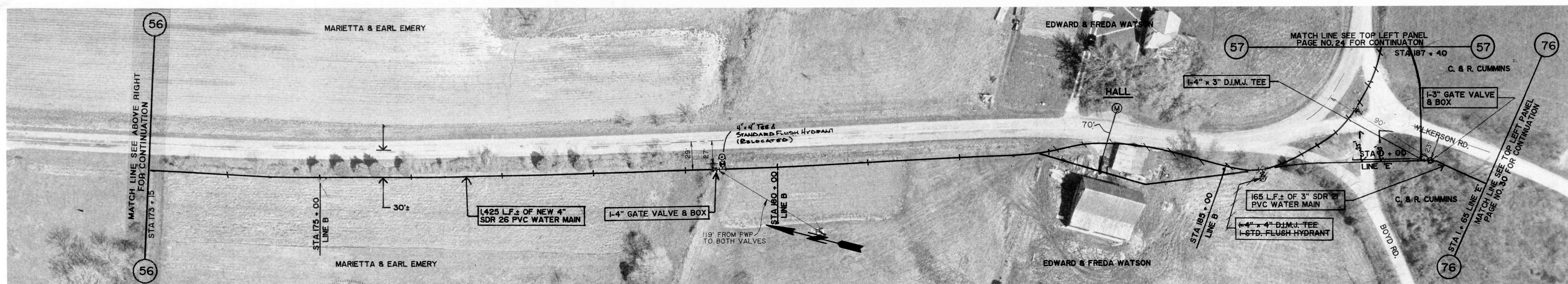


GROUND ELEV. = 950.0 ±
MAX. STATIC PRESS. = 90.9 PSI ±

WEST COUNTY LINE ROAD

GROUND ELEV. = 949.0 ±
MAX. STATIC PRESS. = 91.3 PSI ±

GROUND ELEV. = 950.0 ±
MAX. STATIC PRESS. = 90.9 PSI ±



GROUND ELEV. = 950.0 ±
MAX. STATIC PRESS. = 90.9 PSI ±

WEST COUNTY LINE ROAD

GROUND ELEV. = 942.0 ±
MAX. STATIC PRESS. = 94.4 PSI ±

REVISIONS

DRAWN BY	RE
DATE	10/1/91
CERTIFIED BY	RE
DATE	10/1/91

ROBERT E. CURRY & ASSOCIATES, INC.
CONSULTING ENGINEERS

ELROD WATER COMPANY INC.
DIVISION "D" DISTRIBUTION SYSTEM EXTENSIONS

4" PVC WATER MAIN
EXTENSION ALONG
WEST COUNTY LINE ROAD

JOB NO.	SHT.
SCALE	OF
1" = 50'	43