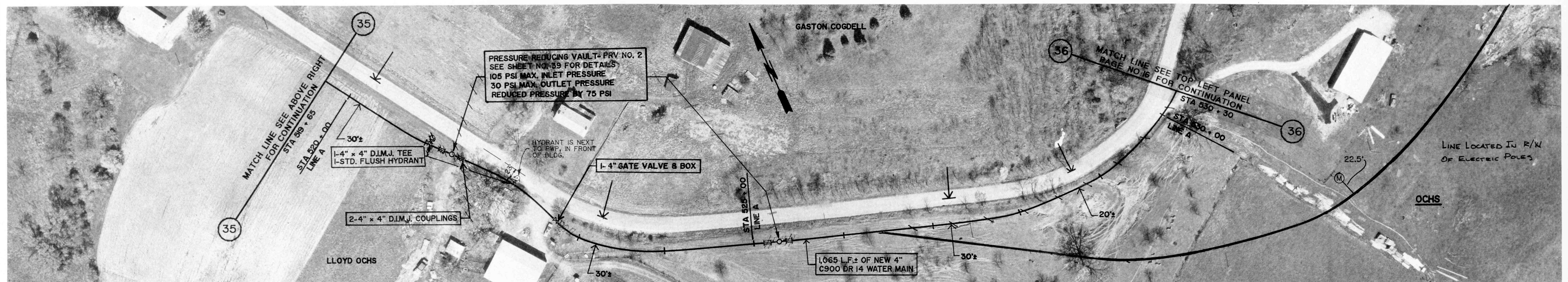


GROUND ELEV. = 800.0 ±  
MAX. STATIC PRESS. = 155.8 PSI ±  
REDUCED PRESS. 95.8 PSI ±

CHESTERVILLE ROAD

GROUND ELEV. = 778.0 ±  
MAX. STATIC PRESS. = 165.4 PSI ±  
REDUCED PRESS. 105.4 PSI ±



GROUND ELEV. = 778.0 ±  
MAX. STATIC PRESS. = 165.4 PSI ±  
REDUCED PRESS. 30.4 PSI ±

CHESTERVILLE ROAD

GROUND ELEV. = 780.0 ±  
MAX. STATIC PRESS. = 164.5  
REDUCED PRESS. 29.5 PSI ±



REVISIONS

DRAWN BY	JC
DATE	10/1/91
CERTIFIED BY	REC
DATE	10/1/91

ROBERT E. CURRY & ASSOCIATES, INC.  
CONSULTING ENGINEERS

ELROD WATER COMPANY INC.  
DIVISION "D" DISTRIBUTION SYSTEM EXTENSIONS

4" PVC WATER MAIN  
EXTENSION ALONG  
CHESTERVILLE ROAD

JOB NO.	SHT.
SCALE 1" = 50'	OF 43