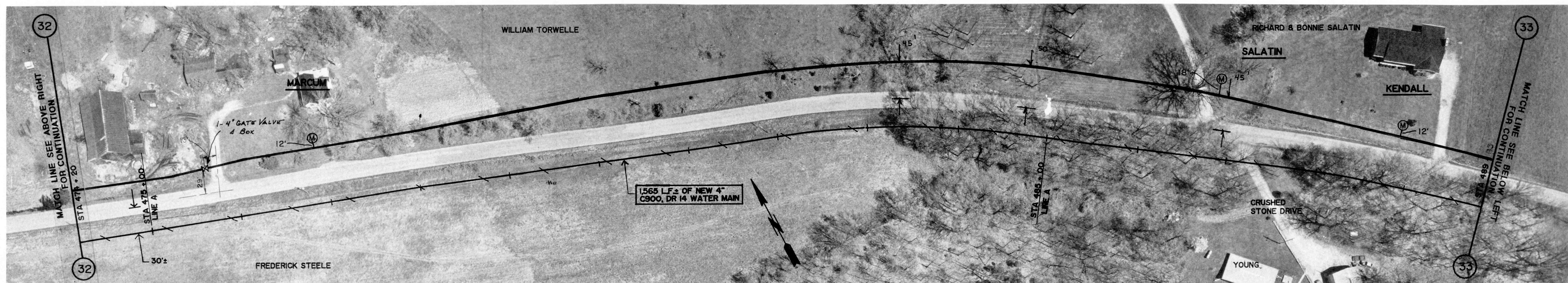




GROUND ELEV. = 830.0 ±  
 MAX. STATIC PRESS. = 142.9 PSI ±  
 REDUCED PRESS. 82.9 PSI±

CHESTERVILLE ROAD

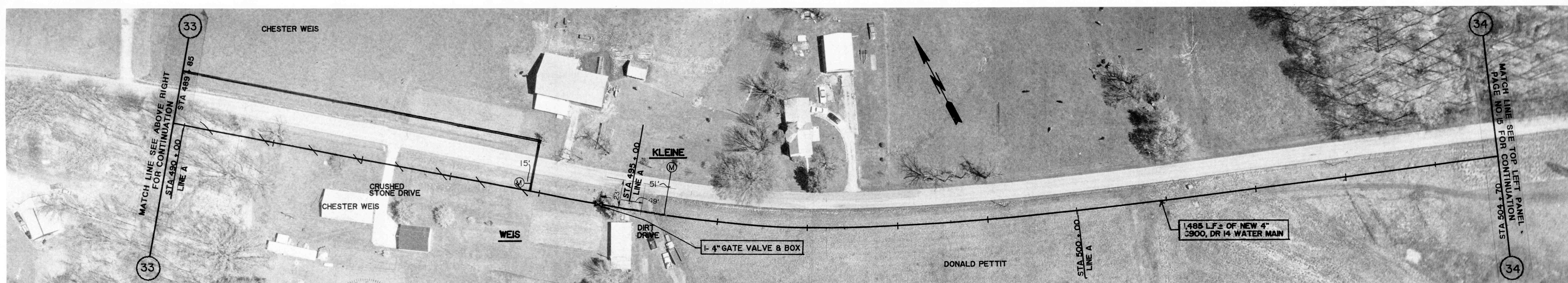
GROUND ELEV. = 830.0 ±  
 MAX. STATIC PRESS. = 142.9 PSI ±  
 REDUCED PRESS. 82.9 PSI±



GROUND ELEV. = 830.0 ±  
 MAX. STATIC PRESS. = 142.9 PSI ±  
 REDUCED PRESS. 82.9 PSI±

CHESTERVILLE ROAD

GROUND ELEV. = 800.0 ±  
 MAX. STATIC PRESS. = 155.8 PSI ±  
 REDUCED PRESS. 95.8 PSI±



GROUND ELEV. = 800.0 ±  
 MAX. STATIC PRESS. = 155.8 PSI ±  
 REDUCED PRESS. 95.8 PSI±

CHESTERVILLE ROAD

GROUND ELEV. = 800.0 ±  
 MAX. STATIC PRESS. = 155.8 PSI ±  
 REDUCED PRESS. 95.8 PSI±

REVISIONS

DRAWN BY	REC
DATE	10/1/91
CERTIFIED BY	REC
DATE	10/1/91

ROBERT E. CURRY & ASSOCIATES, INC.  
 CONSULTING ENGINEERS

ELROD WATER COMPANY INC.  
 DIVISION "D" DISTRIBUTION SYSTEM EXTENSIONS

4" PVC WATER MAIN  
 EXTENSION ALONG  
 CHESTERVILLE ROAD

JOB NO.	SHT.
SCALE 1" = 50'	14 OF 43