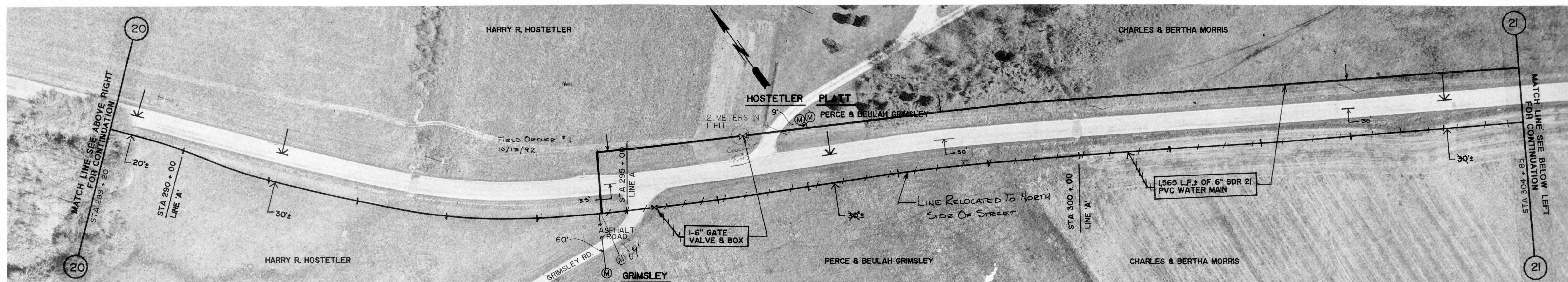


GROUND ELEV. = 923.0 ±
MAX. STATIC PRESS. = 102.6 PSI ±

CHESTERVILLE ROAD

GROUND ELEV. = 908.0 ±
MAX. STATIC PRESS. = 109.1 PSI ±

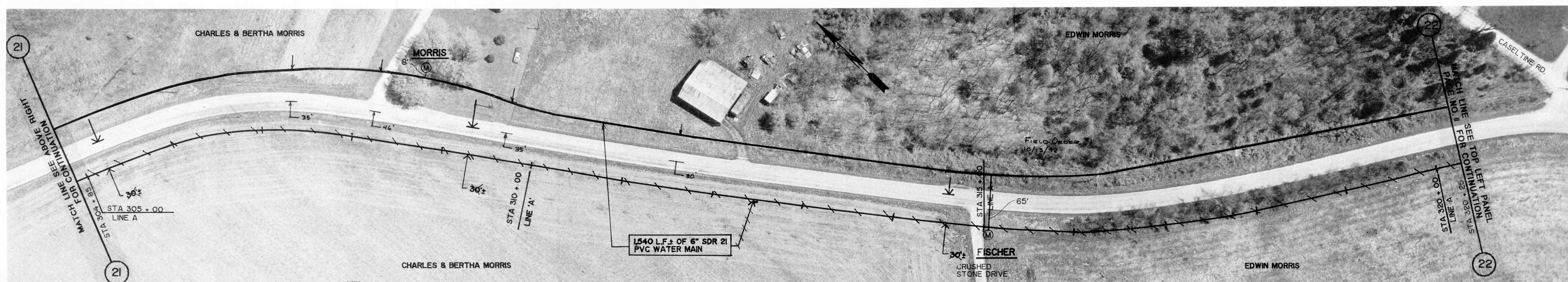


GROUND ELEV. = 908.0 ±
MAX. STATIC PRESS. = 109.1 PSI ±

GROUND ELEV. = 907.0 ±
MAX. STATIC PRESS. = 109.5 PSI ±

CHESTERVILLE ROAD

GROUND ELEV. = 900.0 ±
MAX. STATIC PRESS. = 112.6 PSI ±



GROUND ELEV. = 900.0 ±
MAX. STATIC PRESS. = 112.6 PSI ±

CHESTERVILLE ROAD

GROUND ELEV. = 896.0 ±
MAX. STATIC PRESS. = 114.3 PSI ±

REVISIONS

| | |
|--------------|---------|
| DRAWN BY | RL |
| DATE | 10/1/91 |
| CERTIFIED BY | RE |
| DATE | 10/1/91 |

ROBERT E. CURRY & ASSOCIATES, INC.
CONSULTING ENGINEERS

ELROD WATER COMPANY INC.
DIVISION "D" DISTRIBUTION SYSTEM EXTENSIONS

6" PVC WATER MAIN
EXTENSION ALONG
CHESTERVILLE ROAD

| | |
|----------|------|
| JOB NO. | SHT. |
| SCALE | OF |
| 1" = 50' | 43 |