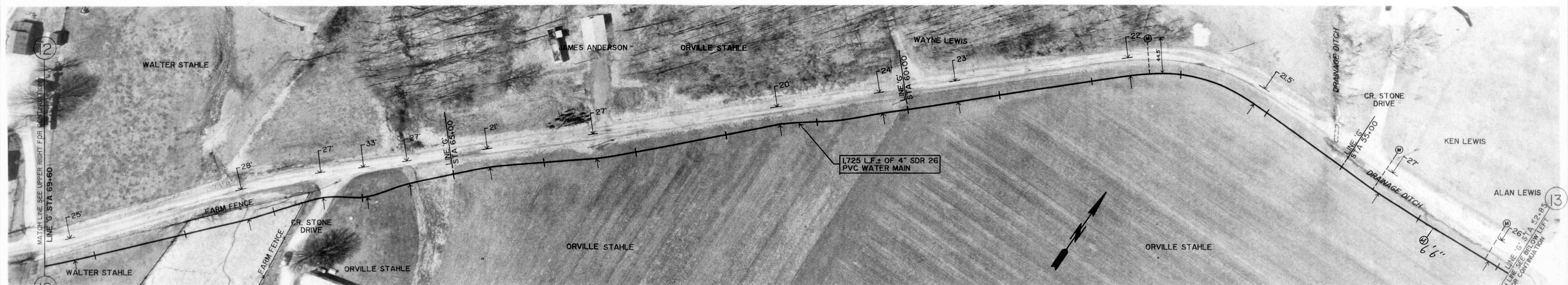


GROUND ELEV. = 990±
MAX STATIC PRESSURE = 74 PSI±

C. R. 700 NORTH

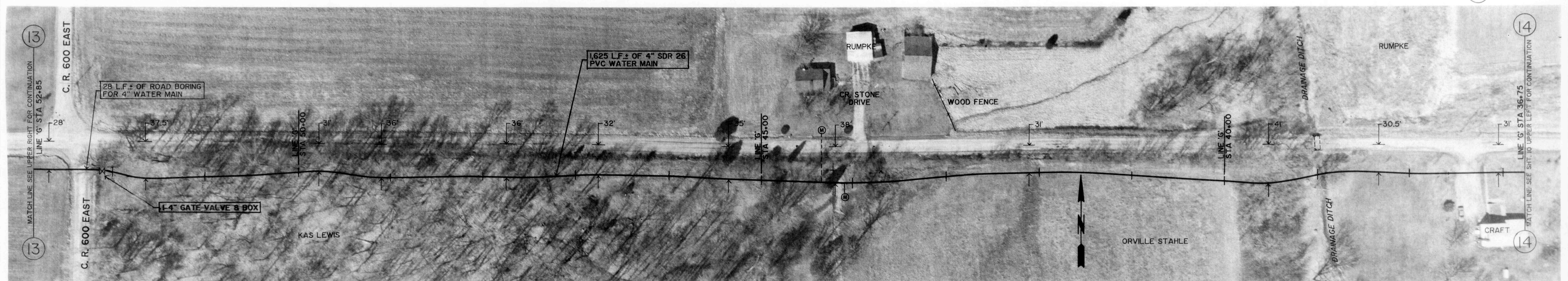
GROUND ELEV. = 990±
MAX STATIC PRESSURE = 74 PSI±



GROUND ELEV. = 990±
MAX STATIC PRESSURE = 74 PSI±

C. R. 700 NORTH

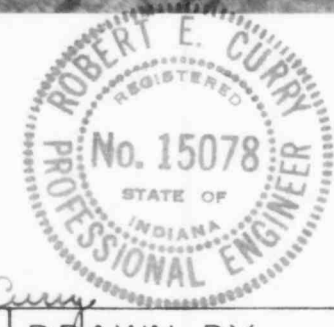
GROUND ELEV. = 990±
MAX STATIC PRESSURE = 74 PSI±



GROUND ELEV. = 990±
MAX STATIC PRESSURE = 74 PSI±

C. R. 700 NORTH

GROUND ELEV. = 970±
MAX STATIC PRESSURE = 82 PSI±



REVISIONS
9/18/89: ADDED ONE WATER METER

DRAWN BY	D. D. E.
DATE	7-17-89
CERTIFIED BY	ROBERT E. CURRY
DATE	7-17-89

ROBERT E. CURRY & ASSOCIATES, INC.
CONSULTING ENGINEERS

ELROD WATER COMPANY INC.
DIVISION "C" DISTRIBUTION SYSTEM EXTENSIONS

C. R. 700 NORTH
4" WATER MAIN

AS BUILT 10-17-90

JOB NO.	SHT.
SCALE	OF
1" = 50'	31