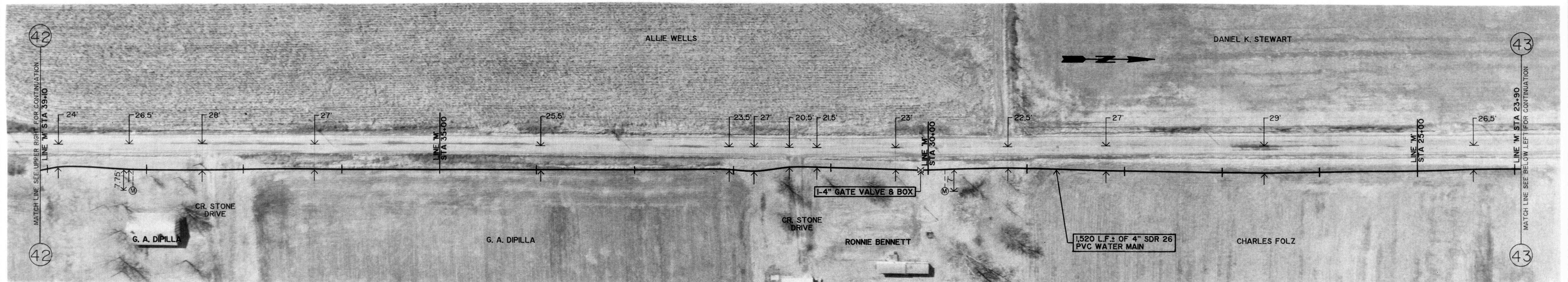


GROUND ELEV. = 960±
MAX STATIC PRESSURE = 78 PSI±

C. R. 400 EAST

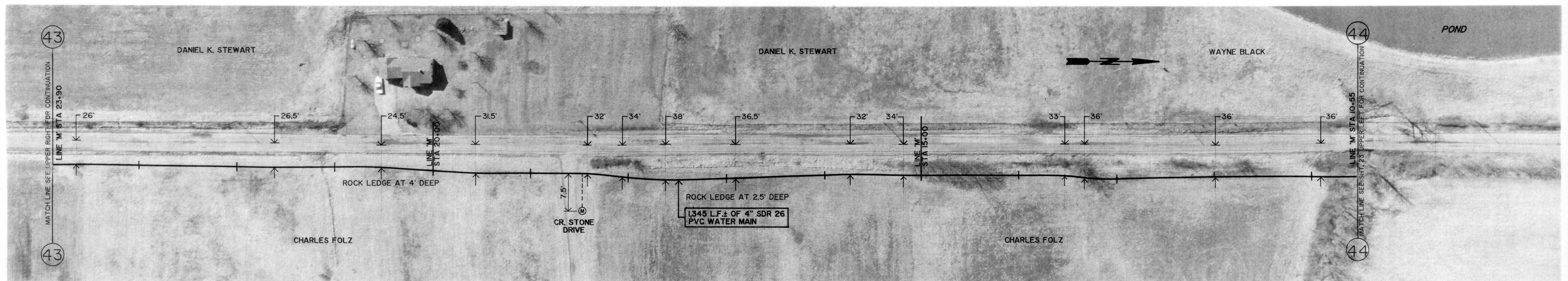
GROUND ELEV. = 980±
MAX STATIC PRESSURE = 69 PSI±



GROUND ELEV. = 980±
MAX STATIC PRESSURE = 69 PSI±

C. R. 400 EAST

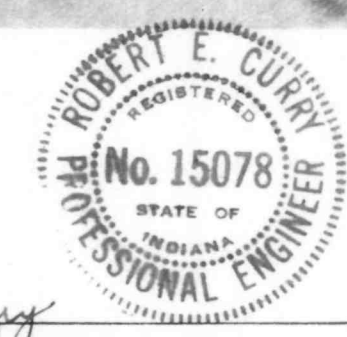
GROUND ELEV. = 990±
MAX STATIC PRESSURE = 65 PSI±



GROUND ELEV. = 990±
MAX STATIC PRESSURE = 65 PSI±

C. R. 400 EAST

GROUND ELEV. = 980±
MAX STATIC PRESSURE = 69 PSI±



Robert E. Curry

AS BUILT 10-17-90

REVISIONS	DRAWN BY	D. D. E.	ROBERT E. CURRY & ASSOCIATES, INC. CONSULTING ENGINEERS	ELROD WATER COMPANY INC. DIVISION "C" DISTRIBUTION SYSTEM EXTENSIONS	C. R. 400 EAST 4" WATER MAIN	JOB NO.	SHT.
	DATE	7-17-89					22
	CERTIFIED BY	ROBERT E. CURRY				SCALE	OF
	DATE	7-17-89				1" = 50'	31'