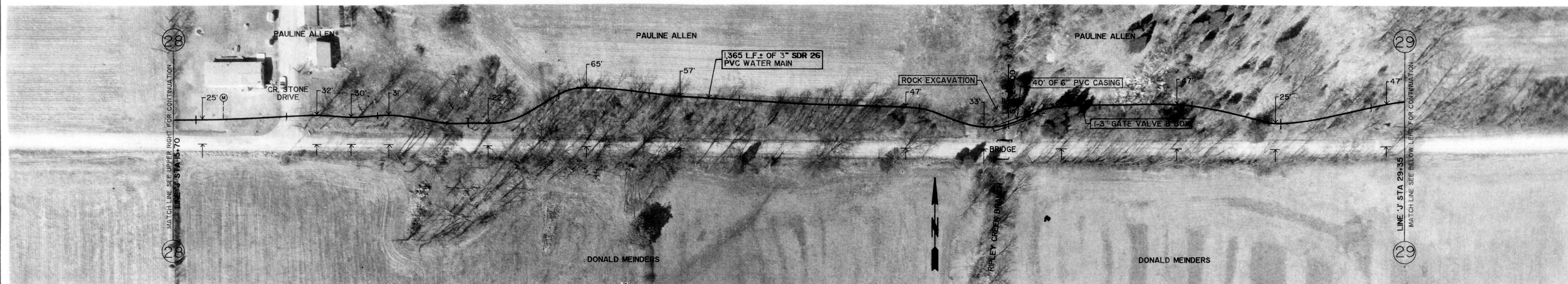


GROUND ELEV. = 990±  
MAX STATIC PRESSURE = 74 PSI±

C. R. 600 NORTH

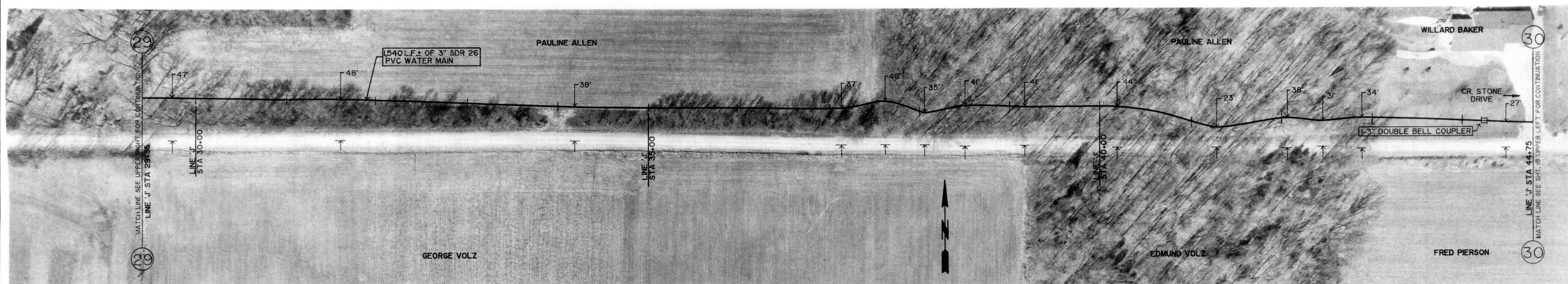
GROUND ELEV. = 980±  
MAX STATIC PRESSURE = 78 PSI±



GROUND ELEV. = 980±  
MAX STATIC PRESSURE = 78 PSI±

C. R. 600 NORTH

GROUND ELEV. = 980±  
MAX STATIC PRESSURE = 78 PSI±



GROUND ELEV. = 980±  
MAX STATIC PRESSURE = 78 PSI±

C. R. 600 NORTH

GROUND ELEV. = 980±  
MAX STATIC PRESSURE = 78 PSI±



REVISIONS

DRAWN BY	D. D. E.
DATE	7-17-89
CERTIFIED BY	ROBERT E. CURRY
DATE	7-17-89

ROBERT E. CURRY & ASSOCIATES, INC.  
CONSULTING ENGINEERS

ELROD WATER COMPANY INC.  
DIVISION "C" DISTRIBUTION SYSTEM EXTENSIONS

C. R. 600 NORTH  
3" WATER MAIN

AS BUILT 10-17-90

JOB NO.	SHT.
SCALE	OF
1" = 50'	31