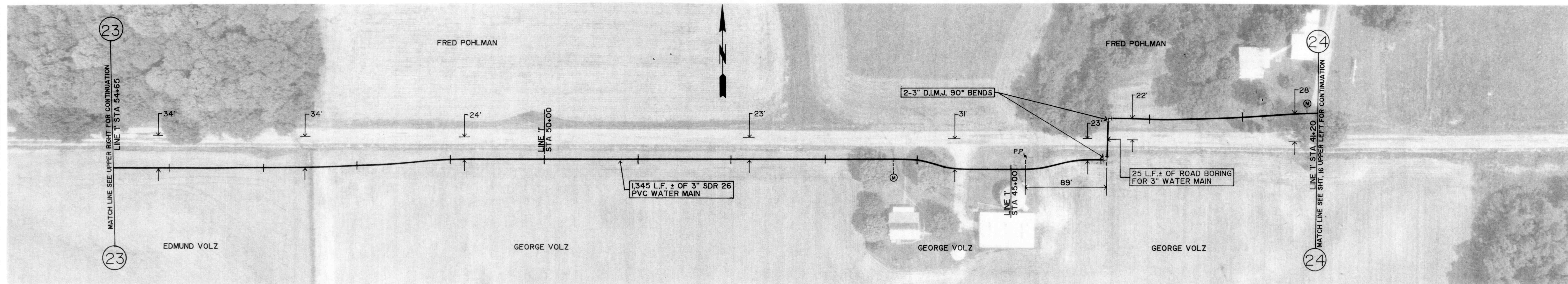


GROUND ELEV. = 970±
MAX STATIC PRESSURE = 82 PSI± C.R. 550 NORTH

GROUND ELEV. = 985±
MAX STATIC PRESSURE = 76 PSI±



GROUND ELEV. = 985±
MAX STATIC PRESSURE = 76 PSI±

C.R. 550 NORTH

GROUND ELEV. = 990±
MAX STATIC PRESSURE = 74 PSI±



Robert E. Curry

REVISIONS	DRAWN BY	D. D. E.	ROBERT E. CURRY & ASSOCIATES, INC. CONSULTING ENGINEERS	ELROD WATER COMPANY INC. DIVISION "C" DISTRIBUTION SYSTEM EXTENSIONS	C. R. 550 NORTH BEGINNING AT OLD MILAN ROAD 3" WATER MAIN	AS BUILT 10-17-90	
	DATE	7-17-89				JOB NO.	SHT. 15
	CERTIFIED BY	ROBERT E. CURRY				SCALE	OF 31
	DATE	7-17-89				1" = 50'	