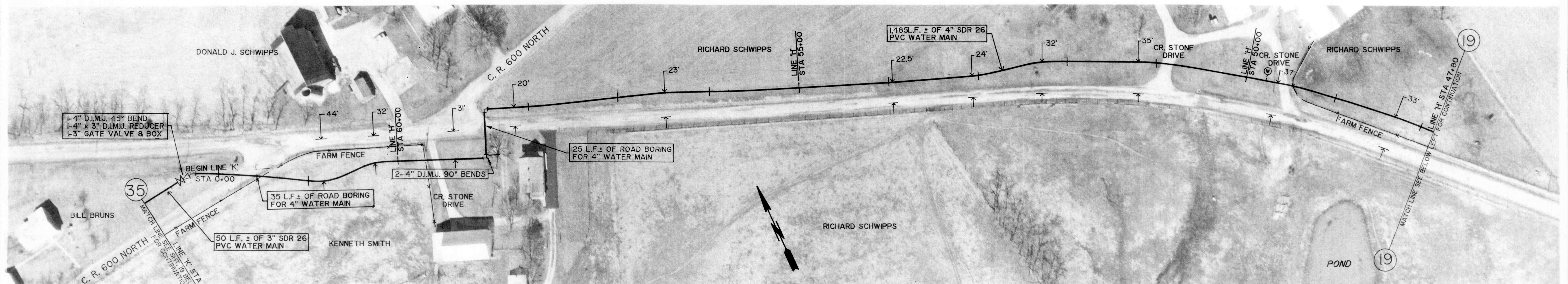


GROUND ELEV. = 980±
MAX STATIC PRESSURE = 78 PSI±

OLD MILAN ROAD

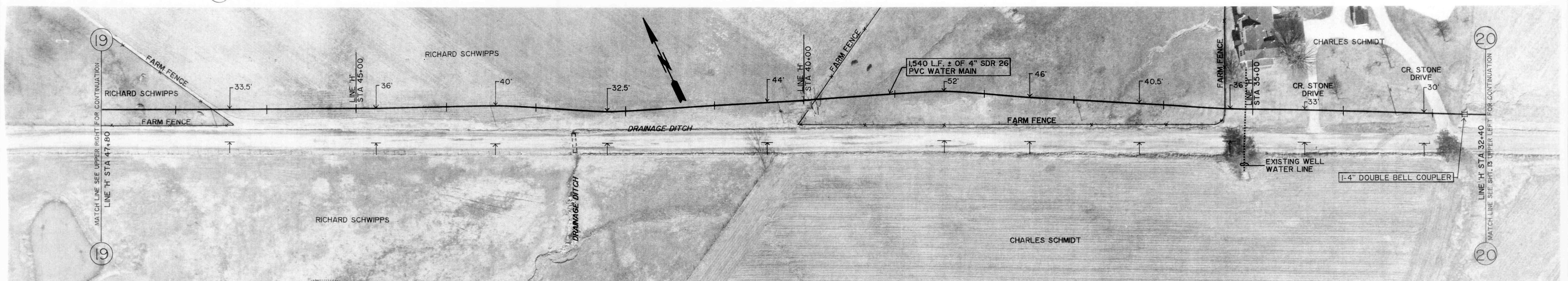
GROUND ELEV. = 990±
MAX STATIC PRESSURE = 74 PSI±



GROUND ELEV. = 990±
MAX STATIC PRESSURE = 74 PSI±

OLD MILAN ROAD

GROUND ELEV. = 990±
MAX STATIC PRESSURE = 74 PSI±



GROUND ELEV. = 990±
MAX STATIC PRESSURE = 74 PSI±

OLD MILAN ROAD

GROUND ELEV. = 990±
MAX STATIC PRESSURE = 74 PSI±



Robert E. Curry

REVISIONS
9/18/89; DELETED 4" WATER MAIN NORTH OF C.R. 600 NORTH
ON OLD MILAN ROAD

| | |
|--------------|-----------------|
| DRAWN BY | D. D. E. |
| DATE | 7-17-89 |
| CERTIFIED BY | ROBERT E. CURRY |
| DATE | 7-17-89 |

ROBERT E. CURRY & ASSOCIATES, INC.
CONSULTING ENGINEERS

ELROD WATER COMPANY INC.
DIVISION "C" DISTRIBUTION SYSTEM EXTENSIONS

OLD MILAN ROAD
4" WATER MAIN

AS BUILT 10-17-90

| | |
|----------|------|
| JOB NO. | SHT. |
| | 12 |
| SCALE | OF |
| 1" = 50' | 31 |