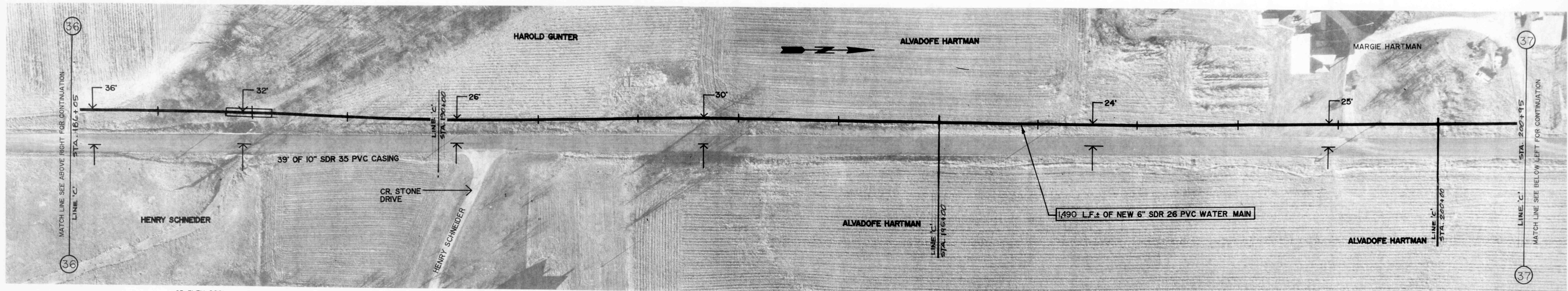


CR. ELEV. 990±  
MAX. STATIC PRES. 73 PSI

CR. ELEV. 994±  
MAX. STATIC PRES. 72 PSI

GR. ELEV. 990±  
MAX. STATIC PRES. 73 PSI

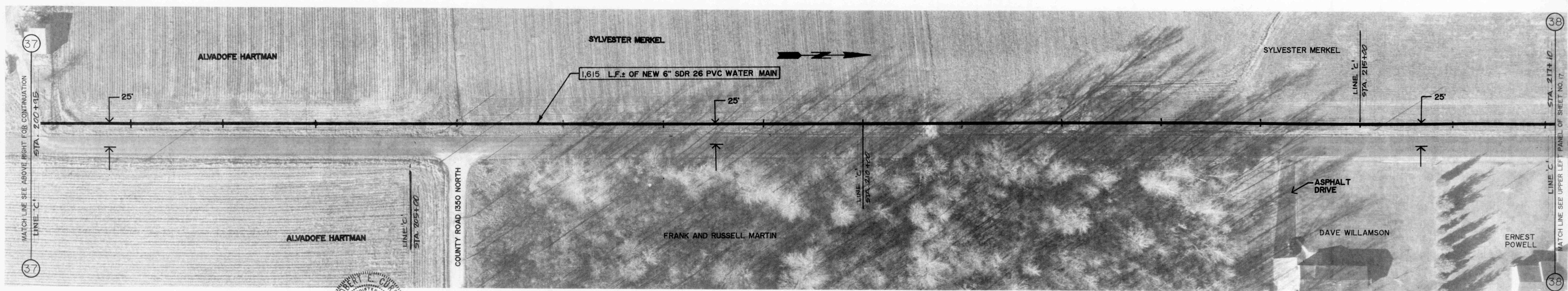
COUNTY ROAD 500 EAST



GR. ELEV. 980±  
MAX. STATIC PRES. 78 PSI

GR. ELEV. 990±  
MAX. STATIC PRES. 73 PSI

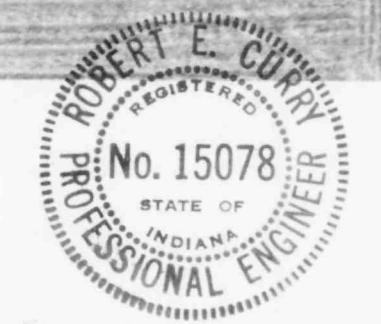
COUNTY ROAD 500 EAST



CR. ELEV. 993±  
MAX. STATIC PRES. 72 PSI

GR. ELEV. 990±  
MAX. STATIC PRES. 73 PSI

COUNTY ROAD 500 EAST



REV. NO.	DRAWN BY	ROBERT E. CURRY & ASSOCIATES, INC. CONSULTING ENGINEERS 3346 AVON ROAD PLAINFIELD, INDIANA 46168	ELROD WATER COMPANY, INC. RIPLEY COUNTY, INDIANA	WATER MAIN EXTENSIONS TO COMMUNITIES OF CLINTON, SPADES & MORRIS	JOB NO.	SHT.
	DATE				16	
	CERTIFIED BY				SCALE 1" = 50'	OF 24
	DATE					

AS BUILT 10-17-88