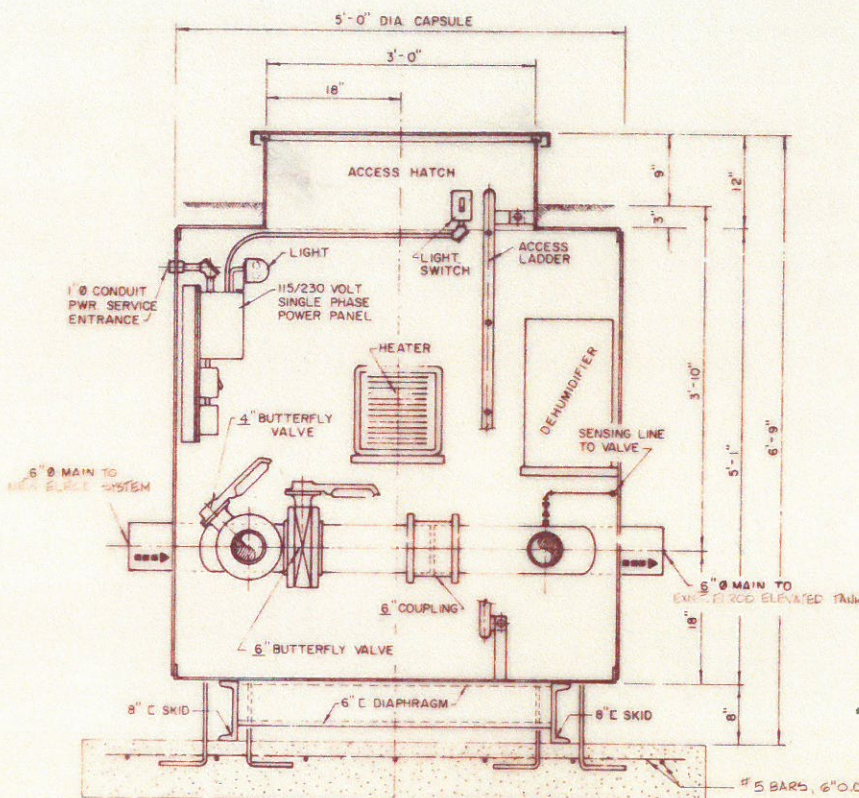
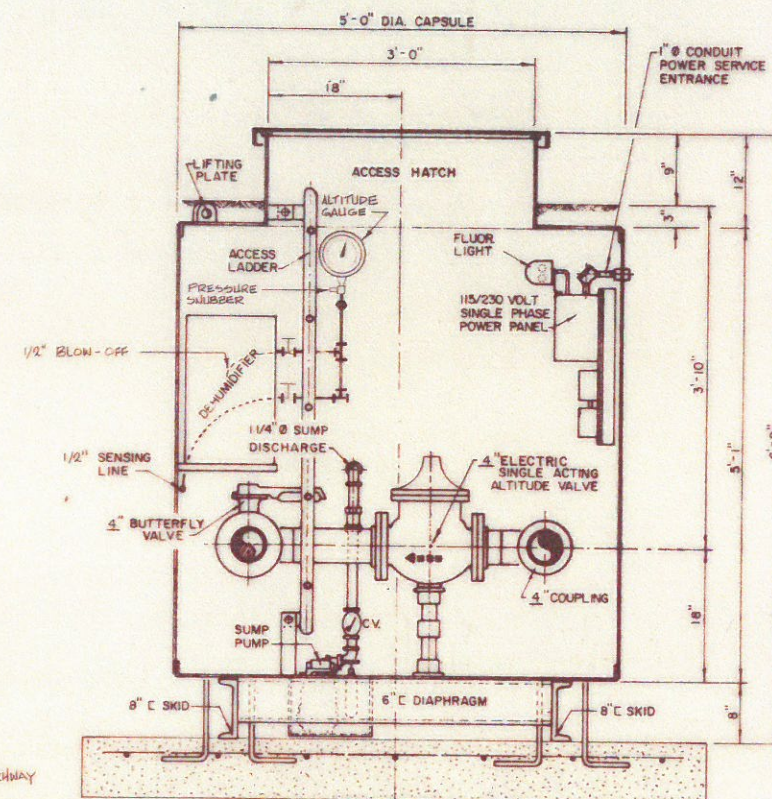


EXTERIOR PLAN

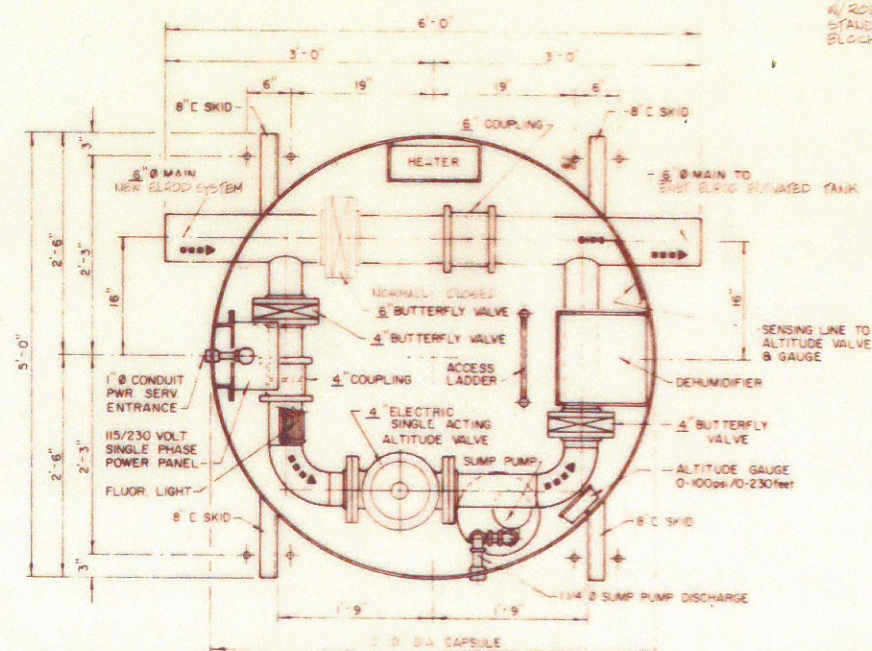


SECTION "B-B"



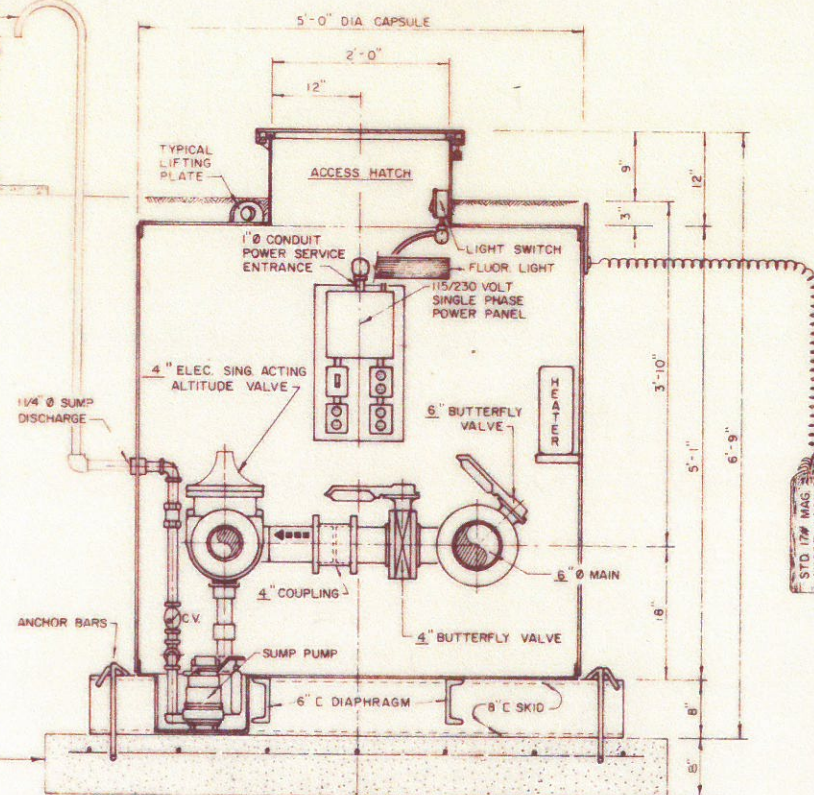
SECTION "C-C"

REINFORCED CONCRETE PAD AND ANCHORS BY INSTALLING CONTRACTOR IN ACCORDANCE WITH DIMENSIONS SHOWN AND/OR AS DIRECTED BY THE ENGINEER



INTERIOR PLAN

1/4" SUMP PUMP DISCHARGE W/ RODENT SCREEN INTO STANDARD CONC. SPLASH BLOCK



SECTION "A-A"

AS BUILT

Date 6-16-83 By M. Sauer

NOTE:

ALTITUDE GAUGE TO HAVE 4" DIAL SIZE WITH HEAD RANGE FROM 0-230 FEET. GAUGES TO BE INSTALLED WITH "RAY" PRESSURE SNUBBER AS MANUFACTURED BY JOSEPH G. POLLARD CO., INC. OR AS ENGINEER APPROVED ALTERNATE.

1/2" SENSING LINE, 1/2" BLOW-OFF AND 1" PILOT EXHAUST TO BE TYPE "L" COPPER.

FOR GENERAL LOCATION OF THE SOLENOID VALVE STATION SEE LINE 2, SHEET #48. THE EXACT LOCATION SHALL BE DETERMINED IN THE FIELD BY THE ENGINEER OR HIS REPRESENTATIVE.

FOR ELECTRICAL DETAILS SEE SHEET #85.

<p>CONSULTING ENGINEERS, ARCHITECTS, PLANNERS Columbus, Indiana Delaware, Ohio Louisville, Kentucky</p>	JOB	61140
	SHEET NO.	24 OF 28
	SCALE	NONE
	DATE	1-23-80
	DRAWN	M.D.J.
	CHECKED	
	APPROVED	
	CERTIFIED	
<p>ELROD WATER COMPANY, INC. RIPLEY CO., IND. SYSTEM IMPROV. - DIVISION "A" SOLENOID VALVE STATION DETAILS</p>		