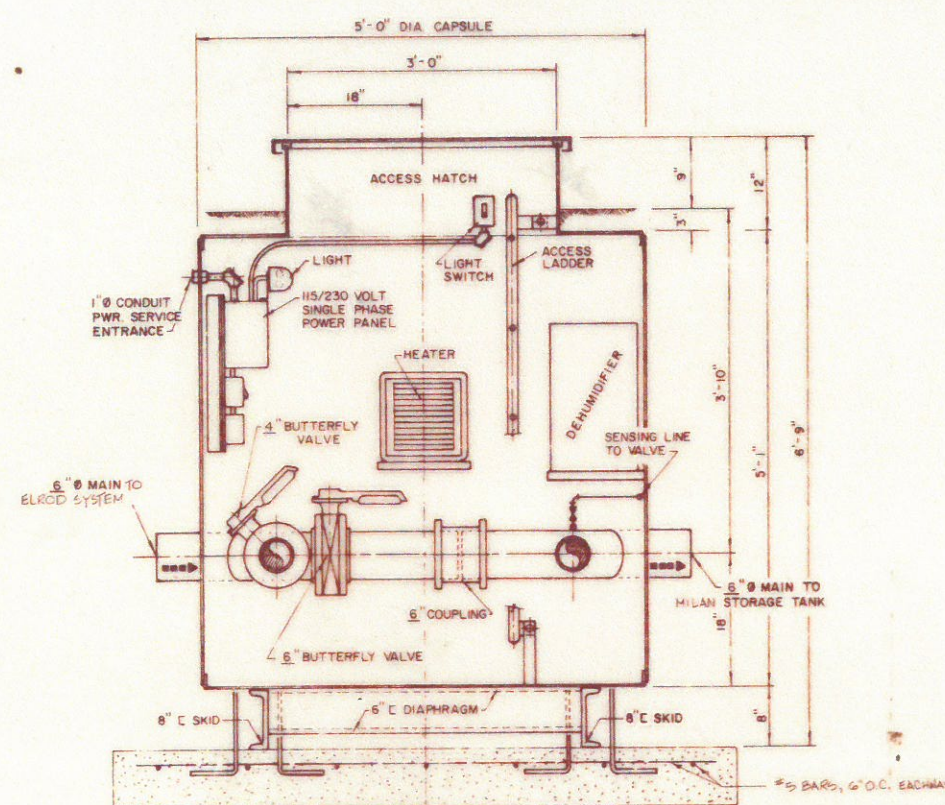
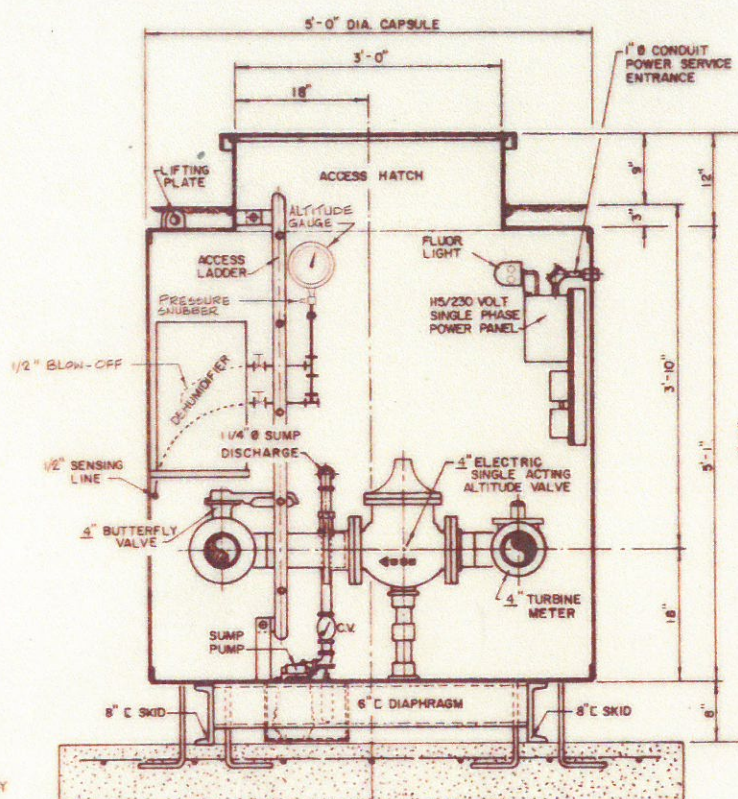


EXTERIOR PLAN

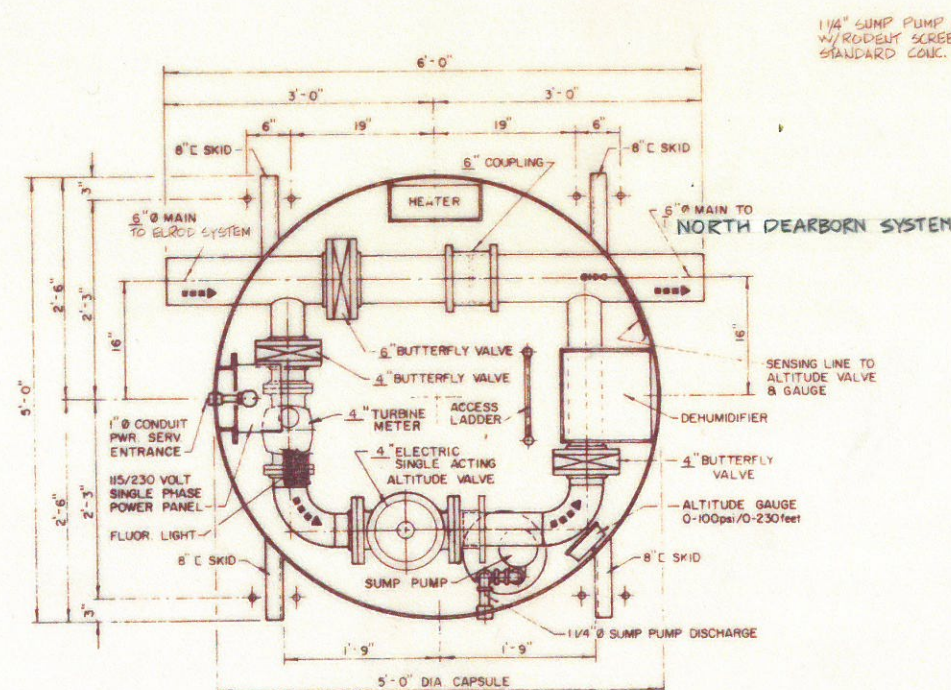


SECTION "B-B"



SECTION "C-C"

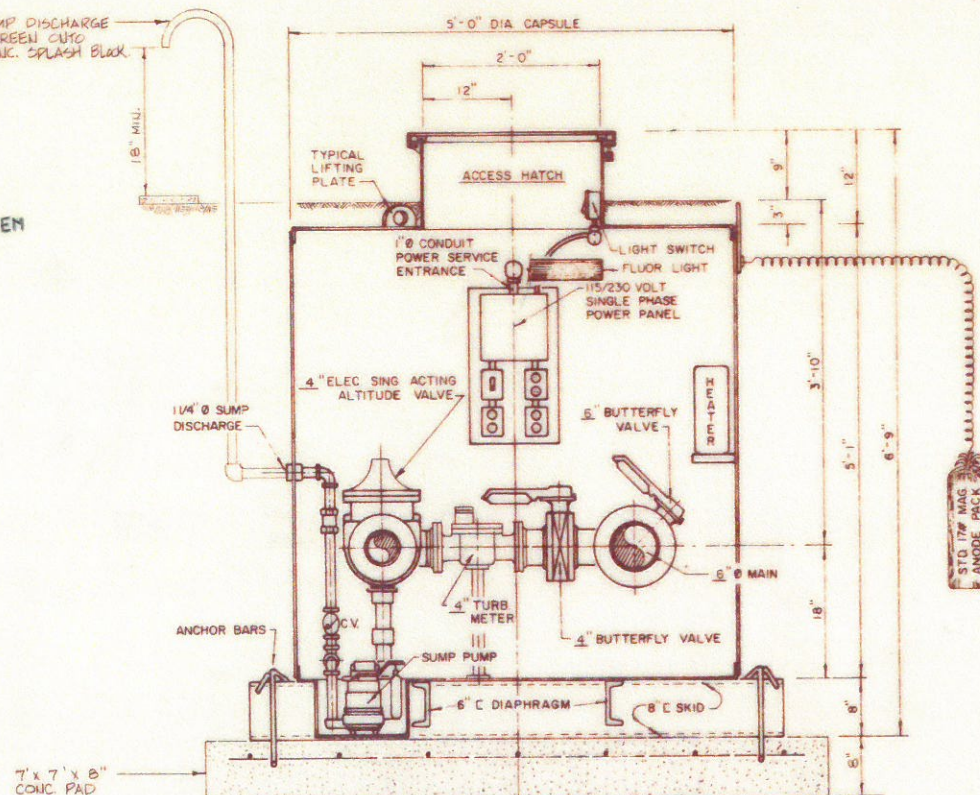
REINFORCED CONCRETE PAD AND ANCHORS BY INSTALLING CONTRACTOR IN ACCORDANCE WITH DIMENSIONS SHOWN AND/OR AS DIRECTED BY THE ENGINEER



INTERIOR PLAN

1/4" SUMP PUMP DISCHARGE W/RODENT SCREEN CUTO STANDARD CONC. SPLASH BLK.

FLOW, SUPPLY TO STORAGE TANK



SECTION "A-A"

**AS BUILT**  
Date 6-16-83 By M. Severn

NOTE:  
ALTITUDE GAUGE TO HAVE 4 1/2" DIAL SIZE WITH HEAD RANGE FROM 0-230 FEET. GAUGES TO BE INSTALLED WITH "RAY" PRESSURE SNUBBER AS MANUFACTURED BY JOSEPH G. POLLARD CO., INC. OR AS ENGINEER APPROVED ALTERNATE.  
1/2" SENSING LINE, 1/2" BLOW-OFF AND 1" PILOT EXHAUST TO BE TYPE "L" COPPER.  
FOR GENERAL LOCATION OF THE SOLENOID VALVE AND METER STATION SEE LINE 14, SHEET #27 AND LINE 2, SHEET #43. THE EXACT LOCATION SHALL BE DETERMINED IN THE FIELD BY THE ENGINEER OR HIS REPRESENTATIVE.  
FOR ELECTRICAL DETAILS SEE SHEET #85.

 CONSULTING ENGINEERS, ARCHITECTS, PLANNERS Columbus, Indiana Delaware, Ohio Louisville, Kentucky	JOB	61140
	SHEET NO.	83 OF 89
	SCALE	NONE
	DATE	1-2-80
	DRAWN	W.D.J.
	CHECKED	
	APPROVED	
	CERTIFIED	
ELROD WATER COMPANY, INC. RIPLEY CO., LTD. SYSTEM IMPROV. - DIVISION "A" SOLENOID VALVE & METER STATION DETAILS		